

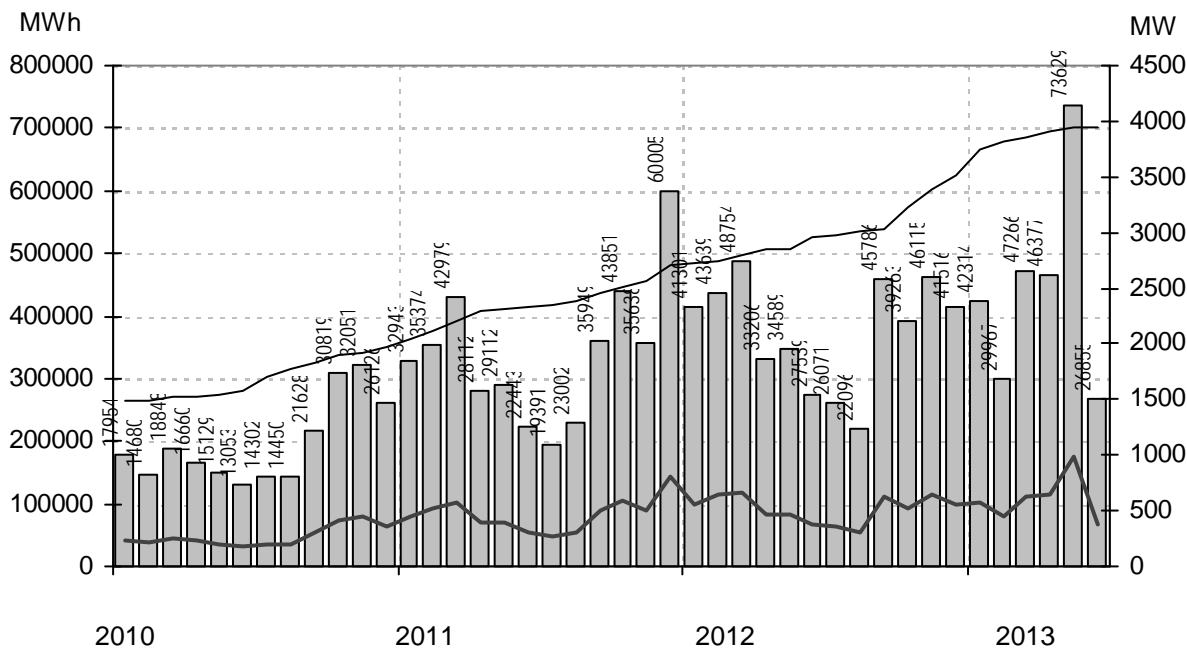
Vindkraftverk

Större än 50 kW

juni 2013

Internetadress: <http://www.vindstat.nu>

Vindproducerad el från registrerade verk



Staplarna visar producerad energi per månad i MWh, linjerna visar installerad effekt respektive månadens medeleffekt i MW

Sammanfattning

| | | |
|---------------------------|-------|-----------|
| Totalt installerad effekt | (MW) | 3996 |
| Antal verk | (st) | 2474 |
| Rapporterade denna månad | (st) | 1403 |
| Rapporterad elproduktion | | |
| 2011 | (MWh) | 4 088 056 |
| 2012 | (MWh) | 4 498 798 |
| 2013 | (MWh) | 2 664 117 |
| Rapporterat denna månad | (MWh) | 268 552 |
| Medeleffekt denna månad | (MW) | 373 |

Vindens energiinnehåll

| | |
|---|-------|
| Månaden jämfört med samma månad tidigare år | 104 % |
| Året hittills jämfört med samma period under tidigare år | 96 % |
| Senaste 12 månaderna jämfört med samma period under tidigare år | 96 % |

Förklaringar till tabellen på följande sidor

| | | | |
|-------|---|-----|-----------------------|
| Ber | Av ägaren lämnad uppgift på beräknad elproduktion | | |
| Årtal | Sammanlagd elproduktion under respektive år | | |
| 12mån | Elproduktion och tillgänglighet senaste 12 månaderna | | |
| Månad | Elproduktion under månaden | | |
| Tid | Andel av månaden som generatoren varit inkopplad på nät | | |
| * | Nytt verk | | |
| AHT | Avläst hindertid | | |
| MS | Mindre störning | PU | Planerat underhåll |
| YNS | Yttre nätstörning | ÖPS | Övrigt planerat stopp |
| ÖYS | Övrig yttre störning | TF | Tekniskt fel |

För uppföljningen svarar Vindstat AB med stöd från Energimyndigheten

Sammanställningen gjord 2013-07-08

Ansvarig:

Nils-Erik Carlstedt Vindstat AB

E-post: nilserik.carlstedt@vindstat.com

Telefon: 070 - 539 54 67

| Ny * | Effekt (kW) | | Fabrikat | Nr Anläggning | Placering | D/H | I drift | Ber MWh | 2011 MWh | 2012 MWh | 2013 MWh | 12mån MWh | 12mån % | Månad MWh | Tid % | Hindertid (tim) | | | | | | | |
|------|-------------|-----------|----------|-----------------------------|-----------|-------|---------|---------|----------|----------|----------|-----------|---------|-----------|-------|-----------------|-------|-----|-----|----|-----|-----|----|
| | Hög | Låg | | | | | | | | | | | | | | Benämning, Ort | Karta | (m) | AHT | MS | YNS | OVS | PU |
| 95 | 20 | Tellus | 37 | Södra Bäckebo,Ålem | G5c | 19/41 | 920225 | 110 | 67 | 56 | 32 | 49 | 85,4 | 4 | 49 | 0 | | | | | | | |
| 99 | | WindWorld | 58 | Oaxen,Mörkö | I9g | 21/24 | 901105 | 150 | 0 | 72 | 10 | 41 | 100 | | | | | | | | | | |
| 100 | | Vestas | 501 | Seglberga I,Laholm | C4e | 20/24 | 880927 | 205 | 150 | 92 | 49 | 92 | 100 | 7 | 70 | 0 | | | | | | | |
| 150 | | WindWorld | 15 | Snaigsto,Näs | I5i | 28/31 | 900202 | 455 | 268 | 245 | 119 | 247 | 100 | 14 | 45 | | | | | | | | |
| 150 | | WindWorld | 16 | Tjautet,Näs | I5i | 28/31 | 900203 | 455 | | | 4 | 4 | | | | | | | | | | | |
| 150 | | WindWorld | 17 | Sladkvenni 2,Näs | I5i | 28/31 | 900608 | 438 | 223 | 287 | 29 | 144 | | | | | | | | | | | |
| 150 | | WindWorld | 20 | Elvina,Linköping | F8f | 28/30 | 901013 | 314 | 123 | 114 | 25 | 100 | 100 | | | | | | | | | | |
| 150 | | WindWorld | 73 | Arendala,Lund | C2f | 27/40 | 930522 | 416 | 410 | 408 | 188 | 374 | 100 | 24 | 75 | | | | | | | | |
| 150 | | WindWorld | 107 | Stureholms gård,Ödåkra | C3d | 27/41 | 940801 | 380 | 352 | 325 | 128 | 278 | 100 | 18 | 60 | | | | | | | | |
| 150 | | WindWorld | 143 | Rödjans Gärd,Bolstad | C9a | 27/41 | 950825 | 260 | 169 | 168 | 78 | 168 | 100 | | | | | | | | | | |
| 150 | | WindWorld | 144 | Nygården 4:1,Nygården | C9a | 27/41 | 950927 | 260 | 249 | 206 | 0 | 92 | 100 | | | | | | | | | | |
| 225 | 50 | Vestas | 22 | Braheskolan,Visingsö | E7g | 27/30 | 901206 | 500 | 405 | 368 | 189 | 375 | 100 | 14 | 58 | 0 | | | | | | | |
| 225 | 50 | Vestas | 24 | Ölandstok,Grönhögen | G3i | 27/30 | 910710 | 580 | 527 | 480 | 240 | 458 | 99,4 | 26 | 80 | 1 | | | | | | | |
| 225 | 50 | Vestas | 25 | Solvändan,Grönhögen | G3i | 27/30 | 910710 | 580 | 510 | 457 | 208 | 413 | 95,3 | 23 | 73 | 69 | | | | | | | |
| 225 | 50 | Vestas | 27 | Hästholmen 1,Hästholmen | E8b | 27/30 | 910905 | 440 | 518 | 440 | 141 | 359 | 92 | 2 | 10 | 113 | | | | | | | |
| 225 | 50 | Vestas | 28 | Mårten,Grötlingbo | J5g | 27/30 | 911025 | 466 | 452 | 426 | 195 | 392 | 94,6 | 21 | 77 | 0 | | | | | | | |
| 225 | 50 | Vestas | 30 | Sjöbergs Säteri,Lugnäs | D9b | 27/30 | 911111 | 400 | 309 | 280 | 121 | 253 | 99,9 | 10 | 54 | 0 | | | | | | | 2 |
| 225 | 50 | Vestas | 33 | Tovsippan,Grönhögen | G3i | 27/30 | 911210 | 580 | 592 | 520 | 261 | 502 | 98,3 | 30 | 85 | 1 | | | | | | | |
| 225 | 50 | Vestas | 34 | Vitsippan,Grönhögen | G3i | 27/30 | 911210 | 580 | 550 | 448 | 151 | 372 | 81,4 | 28 | 83 | 1 | | | | | | | |
| 225 | 50 | Vestas | 51 | Utö,Utö | I9i | 27/30 | 920618 | 490 | 260 | 328 | 155 | 317 | 92,3 | 18 | 65 | 0 | | | | | | | |
| 225 | 50 | Vestas | 54 | Elmer I,Mosås | F10a | 27/31 | 920626 | 280 | 261 | 205 | 98 | 194 | 99,2 | 11 | 52 | 40 | | | | | | | |
| 225 | 50 | Vestas | 56 | Albert,Kistinge | C4e | 27/32 | 920908 | 493 | 466 | 398 | 150 | 365 | 98,2 | 26 | 71 | 18 | | | | | | | |
| 225 | 50 | Vestas | 57 | Erik,Kistinge | C4e | 27/32 | 920908 | 493 | 431 | 369 | 140 | 339 | 99,8 | 25 | 68 | 1 | | | | | | | |
| 225 | 50 | Vestas | 63 | Bösarp,Bösarp | C1i | 27/25 | 921215 | 472 | 478 | 436 | 211 | 404 | 99,8 | 23 | 75 | 3 | | | | | | | |
| 225 | 50 | Vestas | 65 | August,Visingsö | E7g | 27/31 | 930107 | 480 | 408 | 349 | 153 | 341 | 83,1 | 14 | 58 | 8 | | | | | | | |
| 225 | 50 | Vestas | 68 | Kristinelund 1,Ventlinge | G3i | 27/31 | 930109 | 580 | 596 | 550 | 265 | 523 | 96,3 | 31 | 81 | 4 | | | | | | | |
| 225 | 50 | Vestas | 69 | Kristinelund 2,Ventlinge | G3i | 27/31 | 930109 | 580 | 591 | 533 | 259 | 509 | 99,1 | 29 | 81 | 1 | | | | | | | |
| 225 | 50 | Vestas | 70 | Kristinelund 3,Ventlinge | G3i | 27/31 | 930109 | 580 | 600 | 537 | 270 | 525 | 99,3 | 30 | 83 | 0 | | | | | | | |
| 225 | 50 | Vestas | 82 | Österlervind,Simris | E2a | 27/32 | 930923 | 480 | 523 | 491 | 164 | 388 | 99,6 | | | | | | | | | | |
| 225 | 50 | Vestas | 83 | Berta,Simris | E2a | 27/32 | 930923 | 480 | 526 | 499 | 167 | 390 | 99,2 | | | | | | | | | | |
| 225 | 50 | Vestas | 94 | Kerstin,Smedjeholm | B5c | 27/31 | 931209 | 550 | 607 | 595 | 207 | 542 | 99,4 | 40 | 82 | 10 | | | | | | | |
| 225 | 50 | Vestas | 96 | Viktor,Simris | E2a | 27/32 | 940112 | 480 | 502 | 474 | 164 | 373 | 98,4 | | | | | | | | | | |
| 225 | 50 | Vestas | 97 | Almetorps Säteri,Lavad | C8e | 27/32 | 940202 | 320 | 251 | 212 | 92 | 192 | 99,6 | 11 | 57 | 0 | | | | | | | 8 |
| 225 | 50 | Vestas | 100 | Gulsippa,Grönhögen | G3i | 27/30 | 940126 | 580 | 471 | 430 | 217 | 406 | 98,5 | 22 | 80 | 1 | | | | | | | |
| 225 | 50 | Vestas | 101 | Bläsippa,Grönhögen | G3i | 27/30 | 940126 | 580 | 542 | 493 | 239 | 470 | 99,6 | 28 | 82 | 4 | | | | | | | |
| 225 | 50 | Vestas | 106 | Kristinelund Nord,Ventlinge | G3i | 27/31 | 940718 | 600 | 599 | 455 | 213 | 389 | 77,9 | 31 | 82 | 2 | | | | | | | |
| 225 | 50 | Vestas | 109 | Lilla ELen,Tvååker | B5f | 27/31 | 940820 | 460 | 441 | 405 | 154 | 388 | 99,5 | 27 | 72 | 6 | | | | | | | |
| 225 | 50 | Vestas | 110 | El-Trendo,Tvååker | B5f | 27/31 | 940820 | 460 | 443 | 434 | 160 | 399 | 99,7 | 27 | 73 | 5 | | | | | | | |
| 225 | 50 | Vestas | 111 | Hällemöllan 1,Rönnäng | A7f | 29/32 | 941021 | 600 | 641 | 613 | 244 | 584 | 99,3 | 39 | 76 | 7 | | | | | | | 6 |
| 225 | 50 | Vestas | 112 | Rosendal,Rosendal | B5f | 27/31 | 940930 | 500 | 414 | 430 | 167 | 406 | 99,1 | 29 | 79 | 1 | | | | | | | |
| 225 | 50 | Vestas | 113 | Elvira,Kistinge | C4e | 27/31 | 940623 | 384 | 444 | 356 | 123 | 308 | 94,7 | 16 | 54 | 111 | | | | | | | |
| 225 | 50 | Vestas | 116 | Sibylla af,Ångholmen | A7f | 29/31 | 941020 | 570 | 635 | 530 | 235 | 498 | 93,8 | 36 | 80 | 1 | | | | | | | |
| 225 | 50 | Vestas | 119 | Hägvarde,Hall | J7e | 29/31 | 941215 | 410 | 433 | 396 | 137 | 320 | 93,8 | 0 | 0 | 0 | | | | | | | |
| 225 | 50 | Vestas | 120 | Vivi,Visingsö | E7g | 29/31 | 941228 | 530 | 427 | 492 | 224 | 455 | 96 | 18 | 56 | 1 | | | | | | | |
| 225 | 50 | Vestas | 121 | Hornbore,Hamburgsund | A9c | 29/31 | 941216 | 500 | 314 | 343 | 133 | 309 | 85,9 | 20 | 67 | 20 | | | | | | | |
| 225 | 50 | Vestas | 136 | Nuntorpskolan,Brålanda | B8i | 29/31 | 950824 | 325 | 74 | 19 | 84 | 89 | 39,3 | 8 | 34 | 199 | | | | | | | |
| 225 | 50 | Vestas | 141 | Elmer II,Mosås | F10a | 29/31 | 950912 | 320 | 285 | 222 | 105 | 209 | 95,7 | 12 | 47 | 0 | | | | | | | |
| 225 | 50 | Vestas | 142 | Stella af Rönnäng,Rönnäng | A7f | 29/31 | 950918 | 550 | 557 | 557 | 218 | 527 | 98,3 | 35 | 77 | 1 | | | | | | | |
| 225 | 50 | Vestas | 148 | Önaholms Gärd 5,Tveta | C10b | 29/34 | 951108 | 417 | 336 | 333 | 153 | 346 | 92,4 | 24 | 69 | 3 | | | | | | | |
| 225 | 50 | Vestas | 178 | Zephyrus af Hof,Ålmestad | D7d | 29/30 | 960221 | 332 | 230 | 205 | 97 | 194 | 99,8 | 9 | 55 | 1 | | | | | | | |
| 225 | 50 | Vestas | 200 | Lunden,Gårdhem | B8c | 29/30 | 960701 | 330 | 228 | 152 | 118 | 220 | 96 | 11 | 48 | 4 | | | | | | | |
| 225 | 50 | Vestas | 215 | Kälvene,Kälvene | D7h | 29/31 | 960828 | 330 | 327 | 277 | 123 | 248 | 97,5 | 12 | 63 | 0 | | | | | | | |
| 225 | 50 | Vestas | 233 | Linnea,Grönhögen | G3i | 29/32 | 961108 | 570 | 565 | 507 | 241 | 474 | 99,8 | 25 | 77 | 1 | | | | | | | |
| 225 | 50 | Vestas | 234 | Gullvivan,Grönhögen | G3i | 29/32 | 961107 | 570 | 515 | 474 | 232 | 443 | 98,6 | 23 | 78 | 5 | | | | | | | |
| 225 | 50 | Vestas | 235 | Kristinelund 5,Ventlinge | G3i | 27/31 | 961106 | 600 | 668 | 609 | 303 | 588 | 99 | 34 | 83 | 1 | | | | | | | |
| 225 | 50 | Vestas | 241 | Månsunen,Gislöv | E2a | 29/32 | 970217 | 525 | 513 | 498 | 285 | 503 | 98,5 | 26 | 76 | 5 | | | | | | | |
| 225 | 50 | Vestas | 250 | Ingel 3,Östra Ingelstad | D2c | 29/32 | 971017 | 460 | 511 | 468 | 238 | 447 | 99,1 | 27 | 74 | 0 | | | | | | | |
| 225 | 50 | Vestas | 257 | Hällemöllan 2,Rönnäng | A7f | 29/32 | 971111 | 600 | 690 | 659 | 252 | 624 | 99,3 | 41 | 83 | 6 | | | | | | | 5 |
| 225 | 50 | Vestas | 272 | Agrivind,Grötlingbo | J5g | 29/30 | 980110 | 580 | 472 | 443 | 189 | 396 | 96,7 | 21 | 72 | 0 | | | | | | | |
| 225 | 50 | Vestas | 368 | Ann-EL-i,Hängsdala | D7h | 29/30 | 990104 | 370 | 431 | 386 | 176 | 356 | 98 | 14 | 65 | 35 | | | | | | | |
| 225 | 50 | Vestas | 375 | Gesvinto, Skåls Vindk,Näs | I5f | 29/30 | 990508 | 620 | 658 | 565 | 213 | 510 | 98,2 | 30 | 74 | 10 | | | | | | | |
| 225 | 50 | Vestas | 502 | Seglberga II,Laholm | C4e | 27/30 | 910118 | 459 | 411 | 152 | 359 | 96,1 | 24 | 77 | 0 | | | | | | | | |
| 225 | 50 | Vestas | 503 | Seglberga III,Laholm | C4e | 27/30 | 920309 | 419 | 378 | 149 | 337 | 97 | 14 | 46 | 245 | | | | | | | | |
| 225 | 50 | Vestas | 517 | Värpinge Anna,Lund | C2e | 27/30 | 900201 | 500 | 371 | 327 | 142 | 283 | 94,8 | 18 | 61 | 0 | | | | | | | |
| 225 | 50 | Vestas | 518 | Värpinge Bella,Lund | C2e | 27/30 | 900201 | 500 | 318 | 111 | 140 | 252 | 97,3 | 19 | 63 | 0 | | | | | | | |
| 225 | 50 | Vestas | 522 | Bäckagård I,Tvååker | B5f | 27/30 | 911016 | 500 | 477 | 350 | 166 | 404 | 99,8 | 29 | 78 | 0 | | | | | | | |
| 225 | 50 | Vestas | 523 | Bäckagård II,Tvååker | B5f | 27/30 | 911016 | 500 | 459 | 442 | 164 | 401 | 98,5 | 29 | 78 | 0 | | | | | | | |
| 225 | 50 | Vestas | 524 | Bäckagård III,Tvååker | B5f | 27/30 | 911016 | 500 | 460 | 413 | 146 | 364 | 99,4 | 25 | 69 | 0 | | | | | | | |
| 225 | 50 | Vestas | 525 | Bäckagård IV,Tvååker | B5f | 27/30 | 911016 | 500 | 479 | 380 | 155 | 385 | 99,8 | 28 | 76 | 6 | | | | | | | |
| 225 | 50 | Vestas | 526 | Bäckagård V,Tvååker | B5f | 27/30 | 911016 | 500 | 433 | 414 | 157 | 381 | 98,8 | 27 | 75 | 2 | | | | | | | |
| 225 | 50 | Vestas | 527 | Bäckagård VI,Tvååker | B5f | 27/30 | 911016 | 500 | 457 | 428 | 158 | 390 | 99,4 | 28 | 77 | 0 | | | | | | | |
| 225 | 50 | Vestas | 528 | | | | | | | | | | | | | | | | | | | | |

| Ny * | Effekt (kW) | | Nr Anläggning | Placering | D/H | I drift | Ber MWh | 2011 MWh | 2012 MWh | 2013 MWh | 12mån MWh | 12mån % | Månad MWh | Tid % | Hindertid (tim) | | | | | | | |
|------|-------------|-----|--------------------------------|-----------|-------|---------|---------|----------|----------|----------|-----------|---------|-----------|-------|-----------------|-------|-----|-----|----|-----|-----|----|
| | Hög | Låg | | | | | | | | | | | | | Benämning, Ort | Karta | (m) | AHT | MS | VNS | OVS | PU |
| 490 | WindWorld | 117 | AEOLUS,Hviderup | C2i | 37/41 | 941012 | 850 | 770 | 784 | 367 | 717 | 99,1 | 37 | 65 | 9 | | | | | | | |
| 490 | WindWorld | 118 | Lantmännen,Klintehamn | I6c | 37/41 | 941129 | 1000 | 1021 | 951 | 303 | 802 | 96,4 | 40 | 62 | 65 | | | | | | | |
| 490 | WindWorld | 126 | Glimminge Vind,Glimminge | C3g | 37/41 | 950226 | 950 | 1027 | 963 | 406 | 863 | 99,6 | 56 | 69 | 3 | | | | | | | |
| 490 | WindWorld | 133 | Lys-Vind,Lysekil | A8f | 37/40 | 950405 | 950 | 962 | 837 | 151 | 600 | 99,4 | 2 | 7 | 1 | | | | | | | |
| 490 | WindWorld | 135 | Kastlösavind,Kastlösa | G4c | 37/42 | 950711 | 1100 | 973 | 961 | 278 | 756 | 99,6 | 62 | 74 | 4 | | | | | | | |
| 490 | WindWorld | 139 | Hablingbovind 1,Hablingbo | I5i | 37/41 | 950801 | 1225 | 988 | 1134 | 348 | 949 | 93,5 | 56 | 71 | 82 | | | | | | | |
| 490 | WindWorld | 140 | Hablingbovind 2,Hablingbo | I5i | 37/41 | 950801 | 1225 | 1338 | 1083 | 427 | 946 | 89,7 | 53 | 56 | 205 | | | | | | | |
| 500 | Vestas | 80 | Molly Tängen,Orust | A7i | 39/41 | 930923 | 1350 | 1193 | 1144 | 439 | 1092 | 98,1 | 61 | 64 | 0 | | | | | | | |
| 500 | Vestas | 90 | Elektro Glitne,Näs | I5f | 39/41 | 931220 | 1200 | 1393 | 1147 | 467 | 1042 | 95,4 | 61 | 63 | 0 | | | | | | | |
| 500 | Vestas | 91 | Rehn Kraft I,Näs | I5f | 39/41 | 931221 | 1200 | 1258 | 1067 | 422 | 968 | 97,7 | 51 | 61 | 1 | | | | | | | |
| 500 | Vestas | 114 | Barsebäck III,Barsebäck | C2h | 39/40 | 941017 | 1150 | 1165 | 1112 | 450 | 1001 | 96,3 | 83 | 67 | 10 | | | | | | | |
| 500 | Vestas | 124 | Sophie Hogenäset,Sotenäs | A8f | 39/41 | 950131 | 1100 | 1140 | 1009 | 411 | 979 | 95,4 | 52 | 59 | 35 | | | | | | | |
| 500 | Vestas | 127 | Hogenäset, Ingeborg,Hoge | A8f | 39/39 | 950125 | 1100 | 1016 | 1071 | 390 | 973 | 95,6 | 50 | 58 | 35 | | | | | | | |
| 500 | Vestas | 128 | Sönnertorp 2,Sönnertorp | C4a | 39/41 | 950213 | 890 | 984 | 945 | 412 | 891 | 98,3 | 55 | 67 | 7 | | | | | | | |
| 500 | Enercon | 147 | Ruuthsbo I,Ruuthsbo | D1h | 40/42 | 951020 | 1500 | 1038 | 378 | 594 | 972 | 80,3 | 62 | 79 | 69 | | | | | | | |
| 500 | WindWorld | 162 | Lucia af Boholmen,Skoghall | D10d | 37/41 | 951219 | 800 | 694 | 556 | 219 | 573 | 89,9 | 32 | 70 | 4 | | | | | | | |
| 500 | WindWorld | 172 | Si-Vind,Lysekil | A8f | 37/40 | 951221 | 950 | 884 | 747 | 279 | 673 | 99,6 | 42 | 73 | 6 | | | | | | | |
| 500 | Enercon | 181 | Slitevind XIII,Larsbo Glemm | D1i | 40/50 | 960513 | 1300 | 1346 | 1307 | 613 | 1202 | 93,8 | 74 | 90 | 2 | | | | | | | |
| 500 | Enercon | 182 | Slitevind XIV,Larsbo Glemm | D1i | 40/50 | 960513 | 1300 | 1392 | 1292 | 695 | 1269 | 98,9 | 75 | 91 | 0 | | | | | | | |
| 500 | Enercon | 183 | Slitevind XVI,Ryngö N | D2a | 40/50 | 960515 | 1300 | 962 | 856 | 572 | 841 | 47,5 | 71 | 84 | 242 | | | | | | | |
| 500 | Vestas | 186 | Åstorp 1,Åstorp | C3e | 39/40 | 960216 | 860 | 838 | 766 | 349 | 690 | 99,6 | 42 | 61 | 3 | | | | | | | |
| 500 | WindWorld | 195 | Ärröd 220001,Ärröd | D2h | 37/41 | 960523 | 710 | 643 | 675 | 219 | 462 | 76,5 | 11 | 23 | 459 | | | | | | | |
| 500 | Enercon | 209 | Österlervind II,Simris | E2a | 40/42 | 960825 | 1380 | 1407 | 1583 | 482 | 1283 | 99,4 | | | | | | | | | | |
| 500 | WindWorld | 216 | Legevind,Legeved | E3a | 37/41 | 960904 | 600 | 627 | 608 | 283 | 521 | 99,4 | 30 | 66 | 7 | | | | | | | |
| 500 | WindWorld | 218 | Trollenäs,Trollenäs | C2i | 37/41 | 960829 | 810 | 758 | 358 | 694 | 99,3 | 31 | 54 | 9 | | | | | | | | |
| 500 | Enercon | 229 | Hog 1,Stenungsund | B7g | 40/42 | 961003 | 1050 | 599 | 713 | 333 | 700 | 87,6 | 47 | 85 | 0 | | | | | | | |
| 500 | Enercon | 230 | Hog 2,Stenungsund | B7g | 40/42 | 961003 | 1050 | 804 | 922 | 410 | 922 | 92,5 | 53 | 87 | 0 | | | | | | | |
| 500 | Enercon | 236 | Slitevind XVII,Eriksfält N Ör | D1i | 40/50 | 961211 | 1300 | 1379 | 1167 | 762 | 1412 | 98,9 | 83 | 92 | 2 | | | | | | | |
| 500 | Enercon | 237 | Slitevind XVIII,Eriksfält S Ör | D1i | 40/50 | 961211 | 1300 | 1255 | 1226 | 713 | 1325 | 96,4 | 80 | 92 | 5 | | | | | | | |
| 500 | Vestas | 239 | Åstorp 2,Åstorp | C3e | 39/40 | 970204 | 950 | 617 | 824 | 368 | 743 | 98,7 | 47 | 62 | 3 | | | | | | | |
| 500 | Vestas | 247 | Lovisa,Örby | C3a | 39/40 | 970825 | 950 | 847 | 786 | 364 | 743 | 95,7 | 54 | 63 | 1 | | | | | | | |
| 500 | Enercon | 263 | Windbyggarna 1,Lärbo | J7b | 40/65 | 971220 | 1100 | 724 | 594 | 290 | 699 | 97,7 | | | | | | | | | | |
| 500 | Enercon | 264 | Isak,Klintehamn | I6c | 40/50 | 971219 | 1300 | 1169 | 937 | 385 | 909 | 89,5 | 61 | 88 | 0 | | | | | | | |
| 500 | Enercon | 267 | Ryftes Kristina,Fole | J6g | 40/65 | 971218 | 1200 | 991 | 825 | 411 | 865 | 59,2 | 50 | 91 | 657 | | | | | | | |
| 500 | Enercon | 269 | Kyrkebys 1,Hangvar | J7b | 40/65 | 971220 | 1200 | 740 | 869 | 376 | 776 | 98,8 | 46 | 86 | 1 | | | | | | | |
| 500 | Enercon | 270 | Kyrkebys 2,Hangvar | J7b | 40/65 | 971220 | 1200 | 990 | 821 | 383 | 801 | 98 | 47 | 89 | 0 | | | | | | | |
| 500 | Vestas | 291 | Täppeshusen 1,Höganäs | C3d | 39/40 | 980402 | 1050 | 903 | 877 | 373 | 789 | 99,5 | 51 | 63 | 0 | | | | | | | |
| 500 | Vestas | 292 | Täppeshusen 2,Höganäs | C3d | 39/40 | 980402 | 1050 | 921 | 909 | 376 | 797 | 97,1 | 54 | 63 | 0 | | | | | | | |
| 500 | Enercon | 314 | St. Herresta I,St. Herresta | D2b | 40/65 | 980712 | 1420 | 1500 | 1374 | 664 | 1269 | 96 | 86 | 90 | 10 | | | | | | | |
| 500 | Enercon | 317 | St. Herresta II,St. Herresta | D2b | 40/65 | 980712 | 1420 | 1233 | 1349 | 635 | 1244 | 98,9 | 75 | 92 | 0 | | | | | | | |
| 500 | Enercon | 354 | Kadesjö I,Trunnerup 9:4 | D2a | 40/65 | 981119 | 1400 | 1075 | 1238 | 660 | 1247 | 95,7 | 79 | 92 | 0 | | | | | | | |
| 500 | Enercon | 355 | Kadesjö II,Trunnerup 9:4 | D2a | 40/65 | 981119 | 1400 | 1303 | 1146 | 614 | 1193 | 96 | 71 | 91 | 0 | | | | | | | |
| 500 | Enercon | 356 | Marieholm I,Reslöv 11:3 | C2i | 40/65 | 981201 | 1300 | 1278 | 1103 | 584 | 1104 | 96,7 | 71 | 92 | 0 | | | | | | | |
| 500 | Enercon | 357 | Månslunda I,Månslunda | D2f | 40/65 | 981127 | 1350 | 1193 | 1019 | 575 | 1060 | 96,5 | 58 | 83 | 50 | | | | | | | |
| 500 | Enercon | 358 | Rydsgård I,Ville 61:8 | D2a | 40/65 | 981118 | 1400 | 1277 | 1150 | 608 | 1069 | 92,5 | 75 | 91 | 0 | | | | | | | |
| 500 | Enercon | 359 | Rydsgård II,Ville 61:8 | D2a | 40/65 | 981120 | 1400 | 1268 | 1234 | 564 | 1116 | 96,2 | 56 | 76 | 96 | | | | | | | |
| 500 | Enercon | 362 | Marieholm II,Reslöv 11:3 | C2i | 40/65 | 981202 | 1300 | 1194 | 1063 | 453 | 898 | 98,1 | 70 | 91 | 1 | | | | | | | |
| 500 | Enercon | 380 | Gunn-El,Köpinge Gärd | C4e | 40/65 | 990115 | 1200 | 1347 | 832 | 405 | 621 | 70,3 | 22 | 35 | 398 | | | | | | | |
| 500 | Vestas | 504 | Seglabergera IV,L.Tjärby | C4e | 39/40 | 930701 | 1000 | 822 | 662 | 310 | 576 | 79,9 | 29 | 39 | 230 | | | | | | | |
| 500 | Vestas | 519 | Värpinge Clara,Lund | C2e | 39/40 | 960711 | 1050 | 887 | 812 | 231 | 612 | 75,5 | 0 | 0 | 719 | | | | | | | |
| 500 | Vestas | 543 | Slitevind III,Näs | I5f | 39/41 | 930209 | 1350 | 1363 | 1188 | 446 | 1049 | 97,7 | 60 | 65 | 0 | | | | | | | |
| 500 | Vestas | 550 | Vindudd IV,Grötlingbo | J5g | 39/41 | 941115 | 1050 | 1112 | 1018 | 471 | 939 | 97,9 | 52 | 68 | 6 | | | | | | | |
| 500 | Vestas | 551 | Vindudd V,Grötlingbo | J5g | 39/41 | 941115 | 1050 | 1080 | 966 | 463 | 939 | 98,9 | 49 | 56 | 7 | | | | | | | |
| 500 | WindWorld | 559 | Annelöv I,Landskrona | C2h | 37/41 | 951220 | 933 | 908 | 430 | 843 | 99,4 | 51 | 71 | 6 | | | | | | | | |
| 500 | WindWorld | 560 | Annelöv II,Landskrona | C2h | 37/41 | 960307 | 883 | 855 | 331 | 719 | 99,5 | 51 | 78 | 5 | | | | | | | | |
| 500 | Enercon | 565 | Slitevind IX,Smöjen | J7c | 40/50 | 951222 | 1300 | 928 | 919 | 478 | 963 | 65,1 | 38 | 67 | 174 | | | | | | | |
| 500 | Enercon | 566 | Slitevind X,Smöjen | J7c | 40/50 | 951215 | 1300 | 787 | 918 | 449 | 925 | 62,9 | 60 | 88 | 16 | | | | | | | |
| 500 | Enercon | 568 | Slitevind XII,Furillen | J7c | 40/50 | 951220 | 1400 | 1447 | 1369 | 621 | 1304 | 95,8 | 64 | 86 | 33 | | | | | | | |
| 500 | WindWorld | 571 | Kullamöllan,Nyhamnsläge | B3i | 37/41 | 960620 | 1112 | 1017 | 428 | 925 | 99,5 | 64 | 74 | 5 | | | | | | | | |
| 500 | WindWorld | 572 | Kullavind,Nyhamnsläge | B3i | 37/41 | 960620 | 850 | 1166 | 444 | 1024 | 99,1 | 55 | 65 | 5 | | | | | | | | |
| 500 | Enercon | 592 | Humlekärr 1,Humlekärr | A8f | 40/42 | 961024 | 1300 | 918 | 1167 | 431 | 993 | 85,4 | 50 | 74 | 113 | | | | | | | |
| 500 | Enercon | 593 | Humlekärr 2,Humlekärr | A8f | 40/42 | 961024 | 1300 | 506 | 844 | 341 | 723 | 55,5 | 65 | 90 | 0 | | | | | | | |
| 500 | WindWorld | 698 | Blyger II,Jämjö | H4g | 37/42 | 021213 | 550 | 681 | 643 | 291 | 581 | 99,4 | 30 | 63 | 6 | | | | | | | |
| 550 | WindWorld | 661 | Bockstigen 1,Offshore | I5f | 37/40 | 980301 | 1575 | 865 | 817 | 562 | 1209 | 91,6 | 75 | 84 | 43 | | | | | | | |
| 550 | WindWorld | 662 | Bockstigen 2,Offshore | I5f | 37/40 | 980301 | 1575 | 1299 | 918 | 482 | 1135 | 90,5 | 78 | 87 | 10 | | | | | | | |
| 550 | WindWorld | 663 | Bockstigen 3,Offshore | I5f | 37/40 | 980301 | 1575 | 1183 | 1434 | 606 | 1296 | 92,5 | 61 | 77 | 87 | | | | | | | |
| 550 | WindWorld | 664 | Bockstigen 4,Offshore | I5f | 37/40 | 980301 | 1575 | 1460 | 948 | 590 | 1277 | 91,9 | 68 | 72 | 115 | | | | | | | |
| 550 | WindWorld | 665 | Bockstigen 5,Offshore | I5f | 37/40 | 980301 | 1575 | 1520 | 1352 | 607 | 1342 | 96,9 | 81 | 89 | 11 | | | | | | | |
| 600 | Vestas | 146 | Bromöllen 1,Brommö | D9e | 42/40 | 951019 | 1100 | 1067 | 904 | 314 | 791 | 99,2 | 36 | 40 | 1 | | | | | | | |
| 600 | Vestas | 159 | Hansamöllan,Värpinge | C2e | 42/41 | 951205 | 1150 | 1118 | 941 | 430 | 886 | 96,5 | 50 | 51 | 9 | | | | | | | |
| 600 | Vestas | 180 | Vårdkasberget,Hämösand | I17g | 44/40 | 960501 | 1100 | 1233 | 854 | 0 | 250 | 82 | | | | | | | | | | |
| 600 | Vestas | 188 | Hjärtholmen Görel,Hjärthol | B7a | 44/40 | 960502 | 1450 | 1598 | 1022 | 436 | 90 | | | | | | | | | | | |

| Ny * | Effekt (kW) | | Fabrikat | Nr Anläggning | Placering | D/H I drift | Ber MWh | 2011 MWh | 2012 MWh | 2013 MWh | 12mån MWh | 12mån % | Månad MWh | Tid % | Hindertid (tim) | | | | | | | |
|------|-------------|-----|-----------------------------|---------------|-----------|-------------|---------|----------|----------|----------|-----------|---------|-----------|-------|-----------------|-------|-----|-----|----|-----|-----|----|
| | Hög | Låg | | | | | | | | | | | | | Benämning, Ort | Karta | (m) | AHT | MS | VNS | OVS | PU |
| 600 | Vestas | 265 | Rehn Kraft II, Näs,Näs | I5f | 44/40 | 971221 | 1620 | 1779 | 1526 | 580 | 1396 | 98,8 | 81 | 59 | 0 | | | | | | | |
| 600 | Vestas | 266 | Tornsvälan,Slite | J7b | 44/55 | 971229 | 1220 | 953 | 786 | 345 | 726 | 93,5 | 39 | 51 | 0 | | | | | | | |
| 600 | Vestas | 280 | Trärke, Helga,Björkö | H17c | 44/55 | 971121 | 1190 | 926 | 936 | 368 | 809 | 93 | | | | | | | | | | |
| 600 | WindWorld | 283 | Dömestorp 1,Hasslöv | C4b | 42/50 | 980401 | 930 | 1155 | 918 | 423 | 889 | 99,4 | 56 | 56 | 6 | | | | | | | |
| 600 | WindWorld | 284 | Ågård,Genevad | C4e | 42/50 | 980403 | 900 | 1205 | 1020 | 400 | 899 | 99,5 | 39 | 41 | 4 | | | | | | | |
| 600 | WindWorld | 285 | Ångsholm,Genevad | C4e | 42/50 | 980401 | 950 | 1148 | 1013 | 435 | 961 | 99,6 | 74 | 60 | 10 | | | | | | | |
| 600 | WindWorld | 286 | Västan Vind,Mellby | C4b | 42/50 | 980301 | 930 | | 94 | 319 | 414 | 99,8 | 61 | 62 | 4 | | | | | | | |
| 600 | WindWorld | 287 | Mälurvind AB 1,Mellby | C4b | 42/50 | 980301 | 930 | 917 | 94 | 313 | 408 | 90,7 | 51 | 59 | 5 | | | | | | | |
| 600 | WindWorld | 288 | Davids Mölla,Glänninge | C4b | 42/50 | 980422 | 990 | 1080 | 990 | 412 | 883 | 99,4 | 56 | 65 | 6 | | | | | | | |
| 600 | Vestas | 289 | Lagmansberga,Skänninge | F8d | 44/55 | 971118 | 1023 | 1254 | 573 | 313 | 313 | 99,8 | 43 | 52 | 3 | | | | | | | |
| 600 | Vestas | 290 | Vivian,Visingsö | E7g | 44/40 | 971025 | 1300 | 1192 | 1200 | 537 | 1113 | 99,2 | 39 | 43 | 47 | | | | | | | |
| 600 | WindWorld | 293 | Björnsård,Mellby | C4b | 42/50 | 980312 | 1000 | 1116 | 941 | 395 | 879 | 99,5 | 55 | 58 | 4 | | | | | | | |
| 600 | WindWorld | 294 | Kastlösa Väst V2,Kastlösa | G4c | 42/40 | 980201 | 1280 | 1122 | 949 | 485 | 1003 | 98,5 | 66 | 67 | 0 | | | | | | | |
| 600 | WindWorld | 295 | Kastlösa Väst V3,Kastlösa | G4c | 42/40 | 980201 | 1280 | 1178 | 757 | 444 | 871 | 83,5 | 69 | 61 | 38 | | | | | | | |
| 600 | WindWorld | 296 | Fårvind,Kastlösa | G4c | 42/40 | 980201 | 1280 | 1232 | 1172 | 530 | 1125 | 83,4 | 78 | 66 | 0 | | | | | | | |
| 600 | WindWorld | 297 | Kastlösa Väst V5,Kastlösa | G4c | 42/40 | 980201 | 1300 | 1483 | 1356 | 563 | 1244 | 98,7 | 82 | 65 | 37 | | | | | | | |
| 600 | WindWorld | 298 | Kastlösa Väst V7,Kastlösa | G4c | 42/40 | 980201 | 1250 | 1140 | 1035 | 405 | 896 | 95 | 69 | 66 | 1 | | | | | | | |
| 600 | WindWorld | 299 | Kastlösa Väst V11,Kastlösa | G4c | 42/40 | 980201 | 1300 | 187 | 882 | 503 | 1060 | 94,9 | 72 | 63 | 13 | | | | | | | |
| 600 | WindWorld | 300 | Kastlösa Väst V8,Kastlösa | G4c | 42/40 | 980201 | 1210 | 955 | 896 | 336 | 784 | 97,1 | 54 | 60 | 0 | | | | | | | |
| 600 | WindWorld | 301 | Kastlösa Väst V9,Kastlösa | G4c | 42/40 | 980201 | 1220 | 1158 | 1018 | 422 | 895 | 84,6 | 72 | 63 | 1 | | | | | | | |
| 600 | WindWorld | 302 | Kastlösa Väst V10,Kastlösa | G4c | 42/40 | 980201 | 1230 | 1169 | 1132 | 417 | 979 | 93,4 | 68 | 64 | 1 | | | | | | | |
| 600 | WindWorld | 303 | Kastlösa Väst V13,Kastlösa | G4c | 42/40 | 980201 | 1210 | 925 | 841 | 390 | 791 | 97,3 | 49 | 60 | 1 | | | | | | | |
| 600 | WindWorld | 304 | Kastlösa Väst V14,Kastlösa | G4c | 42/40 | 980201 | 1200 | 807 | 903 | 390 | 822 | 96,8 | 50 | 61 | 0 | | | | | | | |
| 600 | WindWorld | 305 | Kastlösa Väst V15,Kastlösa | G4c | 42/40 | 980201 | 1220 | 1149 | 977 | 463 | 1001 | 99,9 | 60 | 64 | 0 | | | | | | | |
| 600 | WindWorld | 306 | Kastlösa Väst V16,Kastlösa | G4c | 42/40 | 980201 | 1250 | 1209 | 1094 | 490 | 1023 | 98,2 | 66 | 66 | 3 | | | | | | | |
| 600 | WindWorld | 307 | LT Klågstop,Klägstop | C4b | 42/50 | 980421 | 990 | 1163 | 1005 | 418 | 901 | 99,4 | 54 | 57 | 6 | | | | | | | |
| 600 | WindWorld | 309 | Björkliden,St. Isie | C1i | 42/45 | 971125 | 1490 | 1589 | 1482 | 686 | 1366 | 98,7 | 79 | 71 | 0 | | | | | | | 1 |
| 600 | WindWorld | 311 | Lilla Isie,Lilla Isie | C1i | 42/45 | 971212 | 1500 | 1688 | 1547 | 718 | 1435 | 99,6 | 76 | 66 | 5 | | | | | | | |
| 600 | WindWorld | 312 | Hofby Vind, Ysby,Kövlinge | C4b | 42/49 | 971108 | 930 | 958 | 837 | 347 | 758 | 99,4 | 48 | 63 | 5 | | | | | | | |
| 600 | Vestas | 315 | Grebban 1,Tanumshede | A9f | 44/45 | 980610 | 1100 | 1077 | 937 | 367 | 865 | 99,8 | 44 | 53 | 0 | | | | | | | |
| 600 | Vestas | 316 | Grebban 2,Tanumshede | A9f | 44/45 | 980611 | 1100 | 1041 | 906 | 355 | 836 | 99,4 | 44 | 53 | 0 | | | | | | | |
| 600 | WindWorld | 318 | Bengtssons Vindmölla,Mell | C4b | 42/50 | 980921 | 1000 | 1192 | 1080 | 441 | 968 | 99,4 | 62 | 64 | 5 | | | | | | | |
| 600 | WindWorld | 321 | Triton Energi,Kövlinge | C4b | 42/50 | 980921 | 1000 | 1099 | 997 | 409 | 881 | 98,9 | 53 | 57 | 8 | | | | | | | |
| 600 | WindWorld | 343 | Kastlösa Väst V1,Kastlösa | G4c | 42/40 | 981001 | 1210 | 1194 | 1250 | 542 | 1194 | 95,2 | 85 | 64 | 42 | | | | | | | |
| 600 | WindWorld | 344 | Kastlösa Väst V6,Kastlösa | G4c | 42/40 | 981001 | | 1360 | 1282 | 444 | 1066 | 93,1 | 80 | 69 | 1 | | | | | | | |
| 600 | WindWorld | 345 | Kastlösa Väst V12,Kastlösa | G4c | 42/40 | 981001 | 1210 | 898 | 913 | 461 | 916 | 93,6 | 48 | 55 | 98 | | | | | | | |
| 600 | WindWorld | 349 | Kövlinge Vind,Kövlinge | C4b | 42/50 | 981101 | 1000 | 1092 | 941 | 347 | 780 | 99,2 | 44 | 54 | 5 | | | | | | | |
| 600 | WindWorld | 350 | Mammarps Vind,Mammarp | C4e | 42/50 | 981101 | 1000 | 1259 | 1099 | 445 | 1006 | 99,4 | 61 | 65 | 5 | | | | | | | |
| 600 | WindWorld | 361 | Sydvind,Menlösa Gärd | C4b | 42/50 | 981101 | 930 | 1074 | 546 | | 50 | 99,9 | | | | | | | | | | |
| 600 | Vestas | 369 | Elise Ruuthsbo,Bjåresjö | D2b | 44/45 | 990120 | 1325 | 1190 | 970 | 547 | 1026 | 98,8 | 58 | 60 | 0 | | | | | | | |
| 600 | Vestas | 370 | Elinor Ruuthsbo,Bjåresjö | D2b | 44/45 | 990120 | 1325 | 929 | 1116 | 589 | 1088 | 99,5 | 62 | 62 | 0 | | | | | | | |
| 600 | Enercon | 397 | Bjälbo, Lennart,Skänninge | F8d | 44/65 | 991001 | 1300 | 1478 | 1174 | 536 | 1049 | 97,2 | 57 | 83 | 0 | | | | | | | |
| 600 | Enercon | 402 | Kyrkebys 3, Hangvar | J7b | 44/65 | 991130 | 1400 | 1190 | 1063 | 434 | 916 | 97 | 56 | 86 | 0 | | | | | | | |
| 600 | Enercon | 403 | Kyrkebys 4, Hangvar | J7b | 44/65 | 991130 | 1400 | 937 | 1036 | 305 | 749 | 85,5 | 53 | 87 | 0 | | | | | | | |
| 600 | Enercon | 414 | Virke 1,Kävlinge | C2i | 44/65 | 991028 | 1350 | 1483 | 1325 | 711 | 1300 | 92 | 86 | 89 | 23 | | | | | | | |
| 600 | Enercon | 415 | Virke 2,Kävlinge | C2i | 44/65 | 991028 | 1350 | 1419 | 1217 | 576 | 1066 | 85,8 | 41 | 44 | 316 | | | | | | | |
| 600 | Enercon | 416 | Skarhult 1,Skarhult | C2i | 44/65 | 991103 | 1350 | 1260 | 1238 | 592 | 1166 | 98,6 | 69 | 85 | 1 | | | | | | | |
| 600 | Enercon | 417 | Skarhult 2,Skarhult | C2i | 44/65 | 991101 | 1350 | 1306 | 1176 | 576 | 1107 | 97,4 | 67 | 84 | 0 | | | | | | | |
| 600 | Enercon | 418 | Fjälkinge 1,Fjälkinge | E3a | 44/65 | 990913 | 1300 | 1075 | 1063 | 484 | 954 | 99,4 | 58 | 90 | 0 | | | | | | | |
| 600 | Enercon | 419 | Fjälkinge 2,Fjälkinge | E3a | 44/65 | 990912 | 1300 | 786 | 1104 | 516 | 988 | 96,3 | 61 | 89 | 1 | | | | | | | |
| 600 | Enercon | 420 | Tjärby,Laholm | C4e | 44/46 | 991112 | 1200 | 1039 | 872 | 390 | 869 | 97,3 | 60 | 83 | 0 | | | | | | | |
| 600 | Enercon | 437 | Freja Olsång,Olsång | G3d | 44/46 | 000706 | 1250 | 1254 | 1141 | 611 | 1142 | 99 | 64 | 86 | 0 | | | | | | | |
| 600 | Enercon | 439 | Skörpinge,Ängelholm | C3h | 44/67 | 000213 | 1450 | 1370 | 1265 | 576 | 1202 | 98,4 | 80 | 88 | 11 | | | | | | | |
| 600 | Enercon | 440 | Genevad,Laholm | C4e | 44/67 | 000301 | 1500 | 1384 | 1227 | 501 | 1124 | 99,3 | 68 | 83 | 2 | | | | | | | |
| 600 | Enercon | 454 | Brönneslöv 1,Brönneslöv | C2i | 44/65 | 001201 | 1350 | 1379 | 1333 | 649 | 1256 | 89,9 | 83 | 89 | 188 | | | | | | | |
| 600 | Enercon | 455 | Brönneslöv 2,Brönneslöv | C2i | 44/65 | 001201 | 1400 | 1412 | 1318 | 651 | 1265 | 99,7 | 70 | 86 | 0 | | | | | | | |
| 600 | Enercon | 456 | Ö. Karaby, Ö. Karaby | C2i | 44/65 | 001201 | 1300 | 1604 | 1417 | 747 | 1374 | 92,3 | 95 | 90 | 0 | | | | | | | |
| 600 | Enercon | 457 | Kornheddinge Mölla,Kornhe | C2f | 44/65 | 001201 | 1300 | 1496 | 1359 | 636 | 1219 | 89,1 | 78 | 79 | 54 | | | | | | | |
| 600 | Enercon | 459 | Skagsudde, Linda,Skagsud | J19a | 44/65 | 001231 | 1400 | 1785 | 1742 | 814 | 1665 | 99,5 | 92 | 83 | 1 | | | | | | | |
| 600 | Enercon | 469 | Kristinetorp 1,Kristinetorp | D2g | 44/65 | 010201 | 1350 | 1312 | 1221 | 685 | 1211 | 99,3 | 68 | 87 | 9 | | | | | | | |
| 600 | Enercon | 470 | Kristinetorp 2,Kristinetorp | D2g | 44/65 | 010201 | 1350 | 1335 | 1080 | 693 | 1136 | 49,4 | 79 | 88 | 188 | | | | | | | |
| 600 | Enercon | 471 | Kristinetorp 3,Kristinetorp | D2g | 44/65 | 010201 | 1350 | 1372 | 1148 | 597 | 1015 | 54 | 84 | 91 | 191 | | | | | | | |
| 600 | Enercon | 472 | Kristinetorp 4,Kristinetorp | D2g | 44/65 | 010201 | 1350 | 1350 | 1255 | 699 | 1272 | 99,2 | 67 | 81 | 55 | | | | | | | |
| 600 | Enercon | 486 | Heden,Heden | C3e | 44/65 | 010401 | 1350 | 1333 | 1342 | 577 | 1047 | 78,2 | 78 | 84 | 0 | | | | | | | |
| 600 | Enercon | 489 | Ryngö III,Ryngö | D2a | 44/50 | 010601 | 1350 | 1451 | 1282 | 677 | 1267 | 98 | 73 | 84 | 6 | | | | | | | |
| 600 | Vestas | 505 | Seglberga V,L. Tjärby | C4e | 44/45 | 960916 | | 1066 | 856 | 380 | 851 | 93,3 | 54 | 54 | 3 | | | | | | | |
| 600 | Vestas | 556 | Utteros,Tväåker | B5f | 42/41 | 951018 | 1200 | 1418 | 1314 | 410 | 1131 | 95,3 | 56 | 42 | 113 | | | | | | | |
| 600 | Vestas | 557 | Utteros,Tväåker | B5f | 42/41 | 951013 | 1200 | 1371 | 1241 | 429 | 1122 | 98 | 59 | 46 | 93 | | | | | | | |
| 600 | Vestas | 558 | Utteros,Tväåker | B5f | 42/41 | 951013 | 1200 | 1203 | 1131 | 391 | 1023 | 99,7 | 68 | 46 | 0 | | | | | | | |
| 600 | Vestas | 574 | Stora Bjärs 2,Stenkyrka | J7a | 44/40 | 960703 | 1100 | 1048 | 910 | 355 | 778 | 99,2 | 40 | 52 | 0 | | | | | | | |
| 600 | Vestas | 577 | Gipsön 1,Landskrona | C2g | 42/41 | 961008 | 1216 | 1180 | 1243 | 517 | 1117 | 100 | 86 | 0 | | | | | | | | |
| | | | | | | | | | | | | | | | | | | | | | | |

| Ny * | Effekt (kW) | | Fabrikat | Nr Anläggning | Placering | D/H I drift | Ber MWh | 2011 MWh | 2012 MWh | 2013 MWh | 12mån MWh | 12mån % | Månad MWh | Tid % | Hindertid (tim) | | | | | | | |
|------|-------------|-----|-----------------------------|---------------|-----------|-------------|---------|----------|----------|----------|-----------|---------|-----------|-------|-----------------|-------|-----|-----|----|-----|-----|----|
| | Hög | Låg | | | | | | | | | | | | | Benämning, Ort | Karta | (m) | AHT | MS | YNS | OVS | PU |
| 600 | Enercon | 679 | Köpingsvik,Köpingsvik | H5a | 44/65 | 021212 | 1400 | 1413 | 1394 | 620 | 1243 | 96,4 | 71 | 85 | 0 | | | | | | | |
| 600 | Enercon | 712 | Bast, Rune,Norra Härene | C8f | 44/65 | 030412 | 1150 | 1326 | 1186 | 532 | 1123 | 99,1 | 59 | 77 | 0 | | | | | | | |
| 600 | Enercon | 713 | Bast, Artur,Norra Härene | C8f | 44/65 | 030412 | 1150 | 1344 | 1216 | 521 | 1117 | 99 | 59 | 76 | 11 | | | | | | | |
| 600 | Enercon | 744 | Lörby 1, Tokke,Lörby | E3b | 44/65 | 031201 | 1270 | 1045 | 973 | 441 | 867 | 97,2 | 48 | 79 | 16 | | | | | | | |
| 600 | Enercon | 745 | Lörby 2, Krok,Lörby | E3b | 44/65 | 031201 | 1270 | 1075 | 1012 | 488 | 922 | 99,3 | 50 | 78 | 0 | | | | | | | |
| 600 | Enercon | 746 | Susekulla,Susekulla | G3g | 44/65 | 031207 | 1100 | 1060 | 971 | 515 | 944 | 99,4 | 54 | 85 | 0 | | | | | | | |
| 600 | Enercon | 747 | Nolby,Nolby | A8f | 44/65 | 040101 | 1250 | 1339 | 1148 | 506 | 1122 | 98 | 58 | 81 | 1 | | | | | | | |
| 600 | Enercon | 752 | Bure 1,Bureå | L22d | 44/65 | 031001 | 1333 | 782 | 824 | 365 | 737 | 93,6 | 56 | 68 | 2 | | | | | | | |
| 600 | Enercon | 753 | Bure 2,Bureå | L22d | 44/65 | 031001 | 1333 | 656 | 757 | 344 | 701 | 95 | 44 | 64 | 1 | | | | | | | |
| 600 | Enercon | 754 | Bure 3,Bureå | L22d | 44/65 | 031001 | 1333 | 933 | 839 | 396 | 756 | 94,1 | 61 | 70 | 1 | | | | | | | |
| 600 | Enercon | 765 | Mälajord,Mälajord | E5f | 44/65 | 040611 | 1030 | 988 | 884 | 405 | 799 | 97,5 | 46 | 82 | 3 | | | | | | | |
| 600 | Enercon | 771 | Valterslund 1,Valterslunds | D2c | 44/65 | 040630 | 1600 | 1716 | 1660 | 826 | 1566 | 96,3 | 97 | 88 | 0 | | | | | | | |
| 600 | Enercon | 772 | Valterslund 2,Valterslunds | D2c | 44/65 | 040702 | 1600 | 1830 | 1683 | 829 | 1587 | 94,8 | 95 | 89 | 0 | | | | | | | |
| 600 | 120 Bonus | 243 | Olsvenne 1,Näs | I5f | 44/50 | 970303 | 1500 | 1594 | 1293 | 473 | 1124 | 86,2 | 38 | 55 | 269 | | | | | | | |
| 600 | 120 Bonus | 251 | Skärbo 1,Tanumshede | A9f | 44/50 | 971118 | 1170 | 1071 | 943 | 324 | 845 | 96,1 | 51 | 82 | 0 | | | | | | | |
| 600 | 120 Bonus | 252 | Skärbo 2,Tanumshede | A9f | 44/50 | 971101 | 1170 | 1014 | 872 | 368 | 855 | 99,2 | 50 | 81 | 0 | | | | | | | |
| 600 | 120 Bonus | 253 | Skärbo 3,Tanumshede | A9f | 44/50 | 971114 | 1170 | 975 | 973 | 404 | 954 | 99,7 | 52 | 83 | 0 | | | | | | | |
| 600 | 120 Bonus | 254 | Skärbo 4,Tanumshede | A9f | 44/50 | 971114 | 1170 | 1036 | 778 | 340 | 814 | 98,3 | 47 | 78 | 5 | | | | | | | |
| 600 | 120 Bonus | 255 | Skärbo 5,Tanumshede | A9f | 44/50 | 971114 | 1170 | 1078 | 938 | 357 | 869 | 99,3 | 51 | 81 | 4 | | | | | | | |
| 600 | 120 Bonus | 256 | Skärbo 6,Tanumshede | A9f | 44/50 | 971113 | 1170 | 912 | 733 | 300 | 697 | 92,2 | 33 | 69 | 62 | | | | | | | |
| 600 | 120 Bonus | 262 | Viking Vind,Löddeköpinge 2 | C2h | 44/41 | 971003 | 1040 | 1167 | 1091 | 528 | 1037 | 99,6 | 70 | 87 | 0 | | | | | | | |
| 600 | 120 Bonus | 274 | Monica af Olseröd,Olseröd | D2i | 44/40 | 971201 | 1160 | 1097 | 1027 | 448 | 890 | 95,2 | 18 | 40 | 396 | | | | | | | |
| 600 | 120 Bonus | 275 | Magnhild af Magnelund,Eld | C4e | 44/30 | 971201 | 1100 | 1150 | 1072 | 418 | 970 | 99,8 | 62 | 85 | 0 | | | | | | | |
| 600 | 120 Bonus | 333 | Eva,Mellböda | H5h | 44/45 | 980801 | 1200 | 1032 | 927 | 511 | 913 | 92,8 | 46 | 78 | 60 | | | | | | | |
| 600 | 120 Bonus | 334 | Maria,Mellböda | H5h | 44/45 | 980801 | 1200 | 1103 | 1016 | 560 | 1030 | 98,9 | 54 | 85 | 1 | | | | | | | |
| 600 | 120 Bonus | 335 | Susanna,Mellböda | H5h | 44/45 | 980801 | 1200 | 1179 | 1137 | 610 | 1122 | 99,4 | 64 | 86 | 2 | | | | | | | |
| 600 | 120 Bonus | 336 | Rebecka Slitevind,Mellböda | H5h | 44/45 | 980801 | 1200 | 985 | 972 | 486 | 928 | 96,9 | 47 | 85 | 1 | | | | | | | |
| 600 | 120 Bonus | 337 | Anna Slitevind,Mellböda | H5h | 44/45 | 980801 | 1200 | 1101 | 1099 | 587 | 1085 | 97,7 | 58 | 82 | 58 | | | | | | | |
| 600 | 120 Bonus | 339 | Biegg-älmai,Suorva | I28g | 44/40 | 981013 | 1000 | 1136 | 1170 | 611 | 1169 | 81,6 | 86 | 71 | 154 | | | | | | | |
| 600 | 120 Bonus | 341 | Holmsund Vindkraftstn,Hol | K20e | 44/50 | 980617 | 1100 | 1177 | 1025 | 475 | 919 | 88,7 | 64 | 75 | 13 | | | | | | | |
| 600 | 120 Bonus | 347 | Rodovålen 2,Rodovålen | E17a | 44/40 | 981007 | 1200 | 1121 | 1008 | 447 | 829 | 96,1 | | | | | | | | | | |
| 600 | 120 Bonus | 378 | Solvik 3,Maglarp | C1h | 44/50 | 990525 | 1500 | 1794 | 1792 | 755 | 1625 | 98 | 104 | 89 | 0 | | | | | | | |
| 600 | 120 Bonus | 379 | Solvik 4,Maglarp | C1h | 44/50 | 990526 | 1500 | 1775 | 1697 | 748 | 1542 | 92,7 | 90 | 78 | 78 | | | | | | | |
| 660 | Vestas | 313 | Havsvind,Mellbystrand | C4b | 47/50 | 980626 | 1400 | 1449 | 1251 | 88 | 704 | 99 | | | | | | | | | | |
| 660 | Vestas | 338 | Burgar,Hablingbo | I5i | 47/45 | 981012 | 1720 | 2121 | 1808 | 687 | 1648 | 98,8 | 101 | 65 | 0 | | | | | | | |
| 660 | Vestas | 382 | Slitevind XX,Smöjen | J7c | 47/55 | 990819 | 1877 | 1500 | 1330 | 599 | 1309 | 98,8 | 76 | 58 | 0 | | | | | | | |
| 660 | Vestas | 383 | Slitevind XXI,Smöjen | J7c | 47/55 | 990819 | 1900 | 1632 | 1467 | 652 | 1404 | 97,7 | 80 | 59 | 0 | | | | | | | |
| 660 | Vestas | 384 | Slitevind XXII,Smöjen | J7c | 47/55 | 990819 | 1956 | 1692 | 1523 | 623 | 1427 | 97,8 | 75 | 58 | 0 | | | | | | | |
| 660 | Vestas | 385 | Slitevind XXIII,Smöjen | J7c | 47/55 | 990819 | 1996 | 1903 | 1708 | 785 | 1669 | 98,9 | 96 | 65 | 4 | | | | | | | |
| 660 | Vestas | 393 | Kärrets Gärd,Kärrets Gärd | B5f | 47/55 | 991012 | 1250 | 1188 | 1160 | 457 | 1059 | 99,3 | 59 | 51 | 5 | | | | | | | |
| 660 | Vestas | 394 | Eksebo Kraft, Henning,Klint | I6c | 47/55 | 991023 | 1650 | 1720 | 1526 | 552 | 1397 | 98,7 | 94 | 58 | 0 | | | | | | | |
| 660 | Vestas | 401 | Harriemöllan,Backgården | C2i | 47/55 | 990930 | 1430 | 1503 | 1272 | 693 | 1182 | 87,8 | 76 | 61 | 1 | | | | | | | |
| 660 | Vestas | 405 | Storugns 1,Lärbo | J7b | 47/47 | 991217 | 1534 | 1223 | 1060 | 406 | 901 | 98,3 | 47 | 52 | 0 | | | | | | | |
| 660 | Vestas | 406 | Storugns 2,Lärbo | J7b | 47/55 | 991215 | 1551 | 1284 | 1127 | 437 | 959 | 98,4 | 51 | 52 | 1 | | | | | | | |
| 660 | Vestas | 407 | Storugns 3,Lärbo | J7b | 47/55 | 991218 | 1530 | 1289 | 1141 | 440 | 972 | 98,5 | 52 | 55 | 0 | | | | | | | |
| 660 | Vestas | 408 | Storugns 4,Lärbo | J7b | 47/55 | 991218 | 1528 | 1218 | 1115 | 445 | 961 | 98,2 | 51 | 53 | 0 | | | | | | | |
| 660 | Vestas | 409 | Storugns 5,Lärbo | J7e | 47/55 | 991219 | 1534 | 1309 | 1179 | 460 | 1004 | 98,7 | 55 | 58 | 0 | | | | | | | |
| 660 | Vestas | 410 | Storugns 6,Lärbo | J7b | 47/55 | 991220 | 1576 | 1164 | 984 | 429 | 913 | 98,2 | 48 | 52 | 0 | | | | | | | |
| 660 | Vestas | 411 | Sandby 1,Vadstena | F8g | 47/55 | 990828 | 1550 | 1611 | 1405 | 546 | 1258 | 98,9 | 54 | 41 | 26 | | | | | | | |
| 660 | Vestas | 412 | Sandby 2,Vadstena | F8g | 47/55 | 990827 | 1550 | 1621 | 1042 | 532 | 888 | 81 | 53 | 42 | 2 | | | | | | | |
| 660 | Vestas | 413 | Sandby 3,Vadstena | F8g | 47/55 | 990831 | 1550 | 1427 | 1361 | 306 | 993 | 80,8 | 2 | 4 | 620 | | | | | | | |
| 660 | Vestas | 421 | Brinkagården,Brinkagården | C3b | 47/55 | 991215 | 1450 | 1690 | 1581 | 751 | 1489 | 98,7 | 90 | 68 | 0 | | | | | | | |
| 660 | Vestas | 423 | Piteå Haraholmen N1,Hara | L24b | 47/55 | 991212 | 1450 | 732 | 607 | 301 | 591 | 99,5 | 44 | 45 | 0 | | | | | | | 1 |
| 660 | Vestas | 424 | Piteå Haraholmen S2,Harah | L24b | 47/55 | 991104 | 1450 | 566 | 610 | 280 | 545 | 98,1 | 39 | 42 | 0 | | | | | | | 1 |
| 660 | Vestas | 427 | Hedeskoga 1,Bersjöholms | D2b | 47/55 | 991021 | 1600 | 1231 | 1324 | 720 | 1269 | 85 | 74 | 59 | 0 | | | | | | | |
| 660 | Vestas | 428 | Hedeskoga 2,Bersjöholms | D2b | 47/55 | 991021 | 1600 | 1204 | 1365 | 694 | 1275 | 87,3 | 73 | 61 | 0 | | | | | | | |
| 660 | Vestas | 431 | Eveboda I,Eveboda | E8c | 47/55 | 000508 | 1425 | 1488 | 1240 | 545 | 1134 | 99,3 | 52 | 48 | 3 | | | | | | | |
| 660 | Vestas | 432 | Eveboda II,Eveboda | E8c | 47/55 | 000508 | 1425 | 1510 | 1204 | 540 | 1137 | 98,2 | 49 | 41 | 103 | | | | | | | |
| 660 | Vestas | 433 | Eveboda III,Eveboda | E8c | 47/55 | 000508 | 1425 | 1482 | 1194 | 454 | 1001 | 87,9 | 54 | 48 | 5 | | | | | | | |
| 660 | Vestas | 434 | Skäggs 1,Väskinde | J6g | 47/50 | 000705 | 1510 | 1197 | 1063 | 431 | 935 | 97,1 | 59 | 83 | 0 | | | | | | | |
| 660 | Vestas | 435 | Skäggs 3,Väskinde | J6g | 47/50 | 000705 | 1510 | 1353 | 1102 | 468 | 1029 | 99,3 | 61 | 83 | 0 | | | | | | | |
| 660 | Vestas | 436 | Månsagården,Uvered | C8f | 47/50 | 000105 | 1100 | 1124 | 971 | 461 | 905 | 98,3 | 39 | 41 | 5 | | | | | | | |
| 660 | Vestas | 444 | Gunnön 1,Karlshamn | E3f | 47/55 | 000908 | 1600 | 1093 | 1039 | 459 | 926 | 99,4 | 58 | 57 | 10 | | | | | | | |
| 660 | Vestas | 445 | Gunnön 2,Karlshamn | E3f | 47/55 | 000908 | 1600 | 1101 | 999 | 461 | 908 | 98,1 | 62 | 64 | 0 | | | | | | | |
| 660 | Vestas | 446 | Gunnön 3,Karlshamn | E3f | 47/55 | 000908 | 1600 | 1133 | 1097 | 493 | 1001 | 99 | 62 | 57 | 1 | | | | | | | |
| 660 | Vestas | 447 | Ruth, Ingelstorp,Ingelstorp | C3e | 47/55 | 000914 | 1350 | 1385 | 1329 | 617 | 1232 | 99 | 78 | 78 | 6 | | | | | | | |
| 660 | Vestas | 448 | Nordanstigsv.1,Stocka | H16b | 47/55 | 001206 | 1333 | 608 | 661 | 307 | 604 | 89,8 | | | | | | | | | | |
| 660 | Vestas | 449 | Nordanstigsv.2,Stocka | H16b | 47/55 | 001206 | 1327 | 617 | 653 | 234 | 532 | 92,6 | | | | | | | | | | |
| 660 | Vestas | 450 | Nordanstigsv.3,Stocka | H16b | 47/55 | 001206 | 1300 | 590 | 650 | 275 | 574 | 97,6 | | | | | | | | | | |
| 660 | Vestas | 453 | Nordanstigsv. 4,Stocka | H16b | 47/55 | 001206 | 1386 | 648 | 782 | 307 | 679 | 98,1 | | | | | | | | | | |
| 660 | Vestas | 458 | Helan,Hovby | D3c | 47/45 | 001124 | 1150 | 1002 | 975 | 458 | 858 | 98,7 | 46 | 78 | 0 | | | | | | | |
| 660 | Vestas | 460 | Ö-vik Själön, Ada | | | | | | | | | | | | | | | | | | | |

| Ny * | Effekt (kW) | | Fabrikat | Nr Anläggning | Placering | D/H I drift | Ber MWh | 2011 MWh | 2012 MWh | 2013 MWh | 12mån MWh | 12mån % | Månad MWh | Tid % | Hindertid (tim) | | | | | | | | |
|------|-------------|-----------|----------|------------------------------|-----------|-------------|---------|----------|----------|----------|-----------|---------|-----------|-------|-----------------|-------|-----|-----|----|-----|-----|----|-----|
| | Hög | Låg | | | | | | | | | | | | | Benämning, Ort | Karta | (m) | AHT | MS | YNS | OVS | PU | OPS |
| 660 | 200 | Vestas | 353 | Värövind Värö III,Värö | B6b | 47/55 | 981112 | 1400 | 1251 | 1299 | 499 | 1210 | 95,6 | 78 | 78 | 0 | | | | | | | |
| 660 | 200 | Vestas | 371 | Sam Öckerövind,Pinan | B7a | 47/50 | 990110 | 1700 | 1805 | 1807 | 720 | 1710 | 98,1 | 113 | 87 | 14 | | | | | | | |
| 660 | 200 | Vestas | 374 | Skåls 1,Näs | I5f | 47/45 | 990506 | 1700 | 1749 | 1519 | 572 | 1335 | 96,9 | 71 | 76 | 25 | | | | | | | |
| 660 | 200 | Vestas | 376 | Slitevind XIX,Näs | I5f | 47/45 | 990507 | 1850 | 2073 | 1725 | 636 | 1537 | 96,4 | 99 | 81 | 0 | | | | | | | |
| 660 | 200 | Vestas | 377 | Tjelvar Bursvind,Näs | I5f | 47/45 | 990507 | 1700 | 1967 | 1655 | 602 | 1469 | 96,8 | 81 | 80 | 0 | | | | | | | |
| 660 | 200 | Vestas | 398 | Ranåker,Skara | D8d | 47/65 | 991006 | 1000 | 1065 | 922 | 354 | 791 | 97,3 | 41 | 69 | 55 | | | | | | | |
| 660 | 200 | Vestas | 426 | Halvan,Hovby | D3c | 47/45 | 991230 | 1150 | 952 | 954 | 352 | 727 | 90,2 | 45 | 78 | 0 | | | | | | | |
| 660 | 200 | Vestas | 429 | Slättäng 2,Slättäng | C2i | 47/55 | 991001 | 1500 | 1458 | 1358 | 651 | 1296 | 98,2 | 80 | 84 | 1 | | | | | | | |
| 660 | 200 | Vestas | 441 | Levide 1,Näs | I5f | 47/45 | 001007 | 1600 | 1702 | 1332 | 551 | 1253 | 96,2 | 57 | 78 | 22 | | | | | | | |
| 660 | 200 | Vestas | 442 | Levide 2,Näs | I5f | 47/45 | 001008 | 1600 | 1517 | 1274 | 575 | 1236 | 96,1 | 56 | 77 | 22 | | | | | | | |
| 660 | 200 | Vestas | 443 | Levide 3,Näs | I5f | 47/45 | 001007 | 1600 | 1661 | 1231 | 564 | 1190 | 93,9 | 55 | 56 | 23 | | | | | | | |
| 660 | 200 | Neg Micon | 490 | Västanby I,Lund | C2h | 48/55 | 010601 | 1680 | 1489 | 1629 | 785 | 1549 | 97,8 | 96 | 89 | 0 | | | | | | | |
| 660 | 200 | Neg Micon | 491 | Västanby II,Lund | C2h | 48/55 | 010601 | 1680 | 1604 | 1564 | 748 | 1501 | 99,1 | 95 | 89 | 3 | | | | | | | |
| 660 | 200 | Vestas | 626 | Brönnestad 1,Brönnestad, | C1i | 47/40 | 010406 | 1585 | 1518 | 1447 | 714 | 1355 | 96,5 | 84 | 81 | 1 | | | | | | | |
| 660 | 200 | Vestas | 627 | Brönnestad 2,Brönnestad, | C1i | 47/40 | 010406 | 1585 | 1577 | 1442 | 670 | 1305 | 95 | 82 | 80 | 0 | | | | | | | |
| 660 | 200 | Vestas | 628 | Eksbo,Hönsinge | C1i | 47/40 | 010406 | 1590 | 1594 | 1496 | 712 | 1373 | 98,9 | 82 | 81 | 8 | | | | | | | |
| 660 | 200 | Vestas | 639 | Hovby, Chaplin,Hovby | D3c | 47/45 | 020131 | 1150 | 1031 | 967 | 458 | 855 | 97,9 | 46 | 79 | 0 | | | | | | | |
| 660 | 200 | Neg Micon | 695 | Bjåresjö 1,Bjåresjö | D2b | 48/55 | 020101 | 1600 | 1594 | 1586 | 750 | 1475 | 99,8 | 84 | 88 | 0 | | | | | | | |
| 750 | 175 | NEG Micon | 348 | Rodovålen 3,Rodovålen | E17a | 44/50 | 981023 | 1200 | 1004 | 1029 | 495 | 890 | 91,9 | 85 | 75 | 108 | | | | | | | |
| 750 | 200 | NEG Micon | 360 | Vanstad Kommungård,Sjöb | D2e | 48/55 | 981104 | 1370 | 1515 | 1443 | 671 | 1293 | 97,6 | 70 | 77 | 111 | | | | | | | |
| 750 | 200 | NEG Micon | 373 | Ångalid,Torrösa | C3b | 48/55 | 990115 | 1470 | 1545 | 1584 | 773 | 1513 | 99,5 | 96 | 89 | 0 | | | | | | | |
| 750 | 200 | NEG Micon | 390 | Solvik Nr 5,Maglarp | C1h | 48/50 | 990630 | 2140 | 2419 | 1976 | | 836 | 98,5 | | | | | | | | | | |
| 750 | 200 | NEG Micon | 391 | Solvik Nr 6,Maglarp | C1h | 48/50 | 990628 | 2140 | 2198 | 2011 | | 862 | 98,8 | | | | | | | | | | |
| 750 | 200 | NEG Micon | 392 | Solvik Nr 7,Maglarp | C1h | 48/50 | 990625 | 2140 | 2404 | 2012 | | 879 | 99,2 | | | | | | | | | | |
| 750 | 200 | NEG Micon | 399 | Framnäs 1,Nöbbelev | C2i | 48/55 | 990923 | | 1630 | 1590 | 767 | 1486 | 98,2 | 90 | 90 | 1 | | | | | | | |
| 750 | 200 | WindWorld | 404 | Otterbäckens Vind 1,Otterb | D9i | 52/65 | 990717 | 1700 | 1362 | 1338 | 459 | 1183 | 100 | 57 | 0 | | | | | | | | |
| 750 | 200 | NEG Micon | 451 | Vind Invest,Lysekil | A8f | 48/55 | 000112 | 1600 | 1964 | 1965 | 754 | 1846 | 99,7 | 97 | 87 | 7 | | | | | | | |
| 750 | 200 | NEG Micon | 452 | Sivik III,Lysekil | A8f | 48/55 | 000101 | 1600 | 1726 | 1828 | 672 | 1660 | 99,8 | 87 | 88 | 0 | | | | | | | |
| 750 | 200 | NEG Micon | 492 | Knöbbens Vind,Laholm | C2e | 48/55 | 010601 | 1560 | 1659 | 1539 | 637 | 1418 | 99,6 | 93 | 86 | 0 | | | | | | | |
| 750 | 200 | NEG Micon | 619 | Östorp 1:4,Östorp 1:4 | C2e | 48/55 | 001229 | 1500 | 1511 | 1415 | 602 | 1238 | 92,5 | 77 | 75 | 75 | | | | | | | |
| 750 | 200 | NEG Micon | 682 | Bydalen,Bydalen | D19c | 48/45 | 020904 | 2100 | 2184 | 1846 | 863 | 1575 | 95,7 | 183 | 92 | 9 | | | | | | | |
| 750 | 200 | NEG Micon | 697 | Gislöv 3,Gislöv | C1i | 48/50 | 021014 | 1900 | 2208 | 2085 | 972 | 1952 | 99,4 | 113 | 87 | 0 | | | | | | | |
| 750 | 200 | NEG Micon | 701 | Isiegården,St Isie | C1i | 48/50 | 030801 | 1720 | 2315 | 2138 | 1009 | 1985 | 98,2 | 119 | 87 | 15 | | | | | | | |
| 750 | 200 | NEG Micon | 741 | Lantan,Svalöv | C3b | 48/55 | 031230 | 1500 | 1743 | 1715 | 799 | 1585 | 99,2 | 106 | 92 | 0 | | | | | | | |
| 750 | 200 | NEG Micon | 775 | TANNAM, Smeby,Tannam, | A9f | 48/50 | 041201 | 1300 | 1280 | 1273 | 482 | 1173 | 98,3 | 69 | 84 | 1 | | | | | | | |
| 750 | 200 | NEG Micon | 776 | TANNAM, Ceding,Tannam, | A9f | 48/50 | 041201 | 1250 | 1213 | 1133 | 452 | 1046 | 99,1 | 57 | 81 | 2 | | | | | | | |
| 750 | 200 | NEG Micon | 808 | Framnäs 2,Nöbbelev | C2i | 48/55 | 050910 | 1500 | 1567 | 1568 | 786 | 1483 | 98,1 | 94 | 91 | 3 | | | | | | | |
| 750 | 200 | NEG Micon | 829 | Gislöv 4,Gislöv | C1i | 48/50 | 051208 | 1900 | 2204 | 2026 | 965 | 1942 | 99,4 | 112 | 88 | 0 | | | | | | | |
| 800 | | Enercon | 798 | Almudden,Askersund | E9f | 48/76 | 050110 | 1500 | 1406 | 1241 | 553 | 1182 | 99 | 66 | 84 | 1 | | | | | | | |
| 800 | | Enercon | 803 | NEWTON,Vårsås | D8f | 48/78 | 050715 | 1600 | 1566 | 1313 | 577 | 1187 | 97,7 | 66 | 88 | 2 | | | | | | | |
| 800 | | Enercon | 805 | Stavf EI,Vårsås | D8f | 48/76 | 050915 | 1532 | 1576 | 1366 | 565 | 1214 | 98 | 66 | 87 | 11 | | | | | | | |
| 800 | | Enercon | 806 | Windy,Vårsås | E8d | 48/76 | 050919 | 1400 | 1494 | 1315 | 569 | 1191 | 99,5 | 65 | 87 | 0 | | | | | | | |
| 800 | | Enercon | 807 | Simona Vindkraft Leringen, | D8c | 48/76 | 050901 | 1500 | 1560 | 1352 | 588 | 1229 | 98,1 | 64 | 88 | 5 | | | | | | | |
| 800 | | Enercon | 816 | Gästgivaregårdens Lamme | D8b | 48/76 | 050905 | 1700 | 2165 | 1747 | 718 | 1517 | 99,2 | 90 | 89 | 0 | | | | | | | |
| 800 | | Enercon | 817 | Hangelösa 1,Hangelösa | D8g | 48/76 | 051015 | 1527 | 1754 | 1601 | 651 | 1439 | 98,6 | 78 | 87 | 0 | | | | | | | |
| 800 | | Enercon | 818 | Stenökra, Lilla Lunden,Lilla | D8g | 48/76 | 051015 | 1500 | 1555 | 1378 | 579 | 1250 | 99 | 68 | 89 | 0 | | | | | | | |
| 800 | | Enercon | 819 | Skeby 3,Broby | D8g | 48/76 | 051028 | 1500 | 1509 | 1590 | 677 | 1458 | 98,4 | 72 | 83 | 21 | | | | | | | |
| 800 | | Enercon | 826 | Skallmeja Väster,Skallmeja | C8f | 48/76 | 051013 | 1700 | 1991 | 1801 | 765 | 1644 | 98,6 | 86 | 87 | 6 | | | | | | | |
| 800 | | Enercon | 827 | Helleberg 1,Helleberg | C8f | 48/50 | 051027 | 1400 | 1516 | 1391 | 647 | 1315 | 99,1 | 66 | 85 | 10 | | | | | | | |
| 800 | | Enercon | 828 | Klevberget Hällevadsholm, | A9c | 48/76 | 060220 | 1800 | 1933 | 1777 | 768 | 1663 | 98,4 | 86 | 86 | 34 | | | | | | | |
| 800 | | Enercon | 836 | Askers Via,Odensbacken | F10b | 48/76 | 060401 | 1400 | 1669 | 1449 | 627 | 1331 | 98,5 | 71 | 80 | 28 | | | | | | | |
| 800 | | Enercon | 837 | Naglarp 1,Kinnarp | D7g | 48/76 | 060323 | 1622 | 1547 | 1382 | 626 | 1296 | 97 | 62 | 89 | 14 | | | | | | | |
| 800 | | Enercon | 838 | Beateberg 1,Knislinge | D3f | 48/65 | 051223 | 1150 | 1065 | 1003 | 477 | 894 | 99,1 | 54 | 86 | 0 | | | | | | | |
| 800 | | Enercon | 839 | Hattefjäll,Hällevadsholm | B9a | 48/76 | 060220 | 1585 | 1996 | 1894 | 801 | 1781 | 99,1 | 91 | 90 | 0 | | | | | | | |
| 800 | | Enercon | 841 | Kalmarsund Vind,Degerha | G3i | 48/50 | 060719 | 2000 | 2386 | 2262 | 998 | 2088 | 99,4 | 137 | 90 | 2 | | | | | | | |
| 800 | | Enercon | 849 | Hällingarna, iDA,Ollebacken | F20a | 48/74 | 060915 | 2000 | 2019 | 1744 | 912 | 1566 | 98,7 | 139 | 89 | 27 | | | | | | | |
| 800 | | Enercon | 852 | Kvismaren 2,Odensbacken | F10c | 48/76 | 061101 | 1420 | 1566 | 1373 | 556 | 1206 | 98,5 | 63 | 84 | 2 | | | | | | | |
| 800 | | Enercon | 854 | Brånna,Skänninge | F8d | 48/76 | 070101 | 1550 | 1764 | 1475 | 654 | 1343 | 99 | 71 | 84 | 6 | | | | | | | |
| 800 | | Enercon | 860 | Torseröds Vindkraftpark 1,T | A9f | 48/55 | 070131 | 1550 | 1780 | 1615 | 682 | 1531 | 98,8 | 86 | 90 | 0 | | | | | | | |
| 800 | | Enercon | 861 | Torseröds Vindkraftpark 2,T | A9f | 48/55 | 070131 | 1550 | 1456 | 1286 | 547 | 1233 | 99,4 | 68 | 88 | 0 | | | | | | | |
| 800 | | Enercon | 862 | Torseröds Vindkraftpark 3,T | A9f | 48/55 | 070131 | 1550 | 1535 | 1354 | 551 | 1266 | 99,5 | 72 | 88 | 0 | | | | | | | |
| 800 | | Enercon | 863 | Torseröds Vindkraftpark 4,T | A9f | 48/55 | 070131 | 1550 | 1424 | 1253 | 519 | 1178 | 98,8 | 65 | 88 | 0 | | | | | | | |
| 800 | | Enercon | 864 | Torseröds Vindkraftpark 5,T | A9f | 48/55 | 070131 | 1550 | 1518 | 1330 | 557 | 1266 | 99,7 | 69 | 87 | 0 | | | | | | | |
| 800 | | Enercon | 865 | Torseröds Vindkraftpark 6,T | A9f | 48/55 | 070131 | 1550 | 1403 | 1237 | 520 | 1184 | 99,7 | 66 | 88 | 0 | | | | | | | |
| 800 | | Enercon | 866 | Kvarnen vindkraft,Kvarnen | D8g | 53/73 | 070505 | 1500 | 1848 | 1581 | 685 | 1458 | 98,8 | 83 | 90 | 0 | | | | | | | |
| 800 | | Enercon | 873 | Härjevids Vind,Härjevid | C8f | 53/75 | 070525 | 1700 | 2060 | 1920 | 869 | 1822 | 99,2 | 92 | 89 | 0 | | | | | | | |
| 800 | | Enercon | 874 | Gömta Vind,Gömta | D8e | 53/75 | 070601 | 1500 | 1570 | 1368 | 590 | 1264 | 98,3 | 64 | 86 | 30 | | | | | | | |
| 800 | | Enercon | 875 | Elin 1,Göteve Liden 2 | D7g | 53/75 | 070628 | 1800 | 1701 | 1561 | 690 | 1453 | 97,8 | 72 | 88 | 23 | | | | | | | |
| 800 | | Enercon | 876 | Söderbodane 1,Söderboda | C9g | 53/73 | | | | | | | | | | | | | | | | | |

| Ny * | Effekt (kW) | | Fabrikat | Nr Anläggning | Placering | D/H I drift | Ber MWh | 2011 MWh | 2012 MWh | 2013 MWh | 12mån MWh | 12mån % | Månad MWh | Tid % | Hindertid (tim) | | | | | | | |
|------|-------------|------|--------------------------------|---------------|-----------|-------------|---------|----------|----------|----------|-----------|---------|-----------|-------|-----------------|-------|-----|-----|----|-----|-----|----|
| | Hög | Låg | | | | | | | | | | | | | Benämning, Ort | Karta | (m) | AHT | MS | YNS | OVS | PU |
| 800 | Enercon | 1033 | Prästgården,Gudhem | D8b | 53/74 | 081219 | 2100 | 2468 | 2225 | 873 | 1985 | 98,6 | 99 | 88 | 36 | | | | | | | |
| 800 | Enercon | 1035 | Eke Vind,Lindärva | D8d | 53/73 | 081210 | 1900 | 1684 | 1782 | 771 | 1627 | 98,3 | 95 | 91 | 0 | | | | | | | |
| 800 | Enercon | 1036 | Harstorp 1,Harstorp | F3i | 53/73 | 090303 | 1980 | 1477 | 1346 | 663 | 1285 | 98,4 | 79 | 95 | 4 | | | | | | | |
| 800 | Enercon | 1037 | Lagmansberga 21,Skänning | F8d | 53/73 | 081120 | 1900 | 2418 | 2115 | 895 | 1912 | 98,9 | 95 | 88 | 21 | | | | | | | |
| 800 | Enercon | 1038 | Lagmansberga 22,Skänning | F8d | 53/73 | 081120 | 1900 | 2379 | 2111 | 893 | 1903 | 99,1 | 96 | 89 | 2 | | | | | | | |
| 800 | Enercon | 1039 | Lagmansberga 23,Skänning | F8d | 53/73 | 081120 | 1900 | 2361 | 2055 | 891 | 1841 | 98,1 | 97 | 89 | 2 | | | | | | | |
| 800 | Enercon | 1041 | Djupepedal,Stora Levene | C8f | 53/73 | 090213 | 1800 | 2092 | 1929 | 884 | 1822 | 98,7 | 94 | 91 | 19 | | | | | | | |
| 800 | Enercon | 1042 | Rytterås 1,Long | C8f | 53/73 | 080408 | 1900 | 2097 | 1947 | 886 | 1830 | 76,8 | 93 | 88 | 16 | | | | | | | |
| 800 | Enercon | 1043 | Ö Karaby II,Östra Karaby | C2i | 53/60 | 090307 | 2200 | 2301 | 2285 | 1075 | 2144 | 98,2 | 131 | 96 | 2 | | | | | | | |
| 800 | Enercon | 1044 | Halvås,Vara | C8b | 53/73 | 090423 | 1850 | 1896 | 1756 | 827 | 1680 | 99,5 | 91 | 91 | 0 | | | | | | | |
| 800 | Enercon | 1045 | Naglarp 2,Kinnarp | D7g | 53/73 | 090207 | 1700 | 1774 | 1623 | 734 | 1533 | 97,1 | 73 | 91 | 12 | | | | | | | |
| 800 | Enercon | 1053 | Karleby Vind,Väderstad | E8f | 53/73 | 090228 | 1980 | 2149 | 1999 | 836 | 1768 | 98,7 | 94 | 88 | 1 | | | | | | | |
| 800 | Enercon | 1067 | Kristin 1,Blixtorp | D8c | 53/73 | 070430 | 1500 | 1606 | 1443 | 608 | 1280 | 99,1 | 69 | 86 | 0 | | | | | | | |
| 800 | Enercon | 1068 | Kristin 2,Blixtorp | D8c | 53/73 | 080531 | 1500 | 1675 | 1463 | 623 | 1295 | 98,9 | 66 | 79 | 0 | | | | | | | |
| 800 | Enercon | 1069 | Kristin 3,Blixtorp | D8c | 53/73 | 080531 | 1500 | 1646 | 1482 | 620 | 1318 | 99,1 | 66 | 79 | 0 | | | | | | | |
| 800 | Enercon | 1070 | Karwind,Korsberga | E8d | 53/73 | 070616 | 1500 | 1617 | 1427 | 630 | 1308 | 99,2 | 72 | 88 | 0 | | | | | | | |
| 800 | Enercon | 1083 | Arvidstorp Vind 1,Mellby | C8f | 53/73 | 090519 | 1800 | 1709 | 1640 | 745 | 1547 | 99,3 | 80 | 89 | 4 | | | | | | | |
| 800 | Enercon | 1084 | Arvidstorp Vind 2,Mellby | C8f | 53/73 | 090519 | 1800 | 1646 | 1622 | 749 | 1545 | 99,3 | 78 | 89 | 5 | | | | | | | |
| 800 | Enercon | 1085 | Lovene 3,Lovene | C8f | 53/73 | 090430 | 1800 | 1824 | 1725 | 781 | 1605 | 99,4 | 84 | 89 | 2 | | | | | | | |
| 800 | Enercon | 1091 | Hörby 1, Susan H,Hörby | E3b | 48/65 | 070828 | 1500 | 1328 | 1331 | 659 | 1219 | 98,9 | 69 | 86 | 20 | | | | | | | |
| 800 | Enercon | 1092 | Hörby 2, Susan H,Hörby | E3b | 48/65 | 070828 | 1500 | 1210 | 1268 | 624 | 1165 | 99,2 | 69 | 84 | 25 | | | | | | | |
| 800 | Enercon | 1093 | Hörby 3,Hörby | E3b | 48/65 | 070828 | 1500 | 1338 | 1330 | 648 | 1212 | 99,2 | 72 | 87 | 16 | | | | | | | |
| 800 | Enercon | 1094 | Rålanda 1, Dan C,Rålanda | B8d | 48/65 | 061101 | 1500 | 1410 | 1236 | 564 | 1206 | 97,3 | 60 | 89 | 39 | | | | | | | |
| 800 | Enercon | 1102 | Möllebacken 3,Nosaby | E3a | 48/65 | 090901 | 1500 | 1502 | 1468 | 669 | 1292 | 98,1 | 74 | 91 | 7 | | | | | | | |
| 800 | Enercon | 1119 | OSVALD,Klockrike | F8h | 53/72 | 091003 | 1695 | 1878 | 1605 | 680 | 1415 | 97 | 79 | 88 | 0 | | | | | | | |
| 800 | Enercon | 1123 | Bjälbo Energi, Karin,Bjälbo | F8d | 53/73 | 081217 | 2100 | 2375 | 2159 | 918 | 1952 | 99,7 | 100 | 90 | 0 | | | | | | | |
| 800 | Enercon | 1137 | Lörby 4, Pehr,Lörby | E3b | 53/73 | 100101 | 1750 | 1835 | 1691 | 834 | 1544 | 94,8 | 94 | 92 | 0 | | | | | | | |
| 800 | Enercon | 1138 | Lörby 5, Mattis,Lörby | E3b | 53/73 | 100101 | 1750 | 1725 | 1755 | 813 | 1598 | 98,2 | 85 | 88 | 25 | | | | | | | |
| 800 | Enercon | 1139 | Lörby 6, Daniel,Lörby | E3b | 53/73 | 100101 | 1750 | 1850 | 1728 | 858 | 1621 | 97,9 | 98 | 93 | 0 | | | | | | | |
| 800 | Enercon | 1140 | Lörby 7, Elin,Lörby | E3b | 53/73 | 100101 | 1750 | 1911 | 1796 | 877 | 1690 | 99,1 | 99 | 93 | 0 | | | | | | | |
| 800 | Enercon | 1151 | Berit 2, Lilla Lunden,Lilla Lu | D8g | 53/74 | 101203 | 1800 | 1484 | 1511 | 667 | 1407 | 99,2 | 76 | 91 | 0 | | | | | | | |
| 800 | Enercon | 1156 | Byåra 2,Borby | D2c | 53/73 | 091201 | 2600 | 3039 | 2797 | 1434 | 2679 | 96,6 | 161 | 82 | 110 | | | | | | | |
| 800 | Enercon | 1181 | Marieholm III,Marieholm | C2i | 53/60 | 080515 | 2000 | 2187 | 2047 | 1065 | 2025 | 99,4 | 128 | 95 | 0 | | | | | | | |
| 800 | Enercon | 1182 | Marieholm 4,Marieholm | C2i | 53/60 | 080515 | 2000 | 2070 | 1959 | 1009 | 1896 | 98,6 | 114 | 94 | 5 | | | | | | | |
| 800 | Enercon | 1197 | Petersborg 1,Lindshammar | F5g | 53/73 | 090501 | 1500 | 1483 | 1337 | 589 | 1216 | 99,2 | 66 | 93 | 0 | | | | | | | |
| 800 | Enercon | 1198 | Petersborg 2,Lindshammar | F5g | 53/73 | 090501 | 1500 | 1458 | 1340 | 579 | 1210 | 97,6 | 49 | 75 | 141 | | | | | | | |
| 800 | Enercon | 1224 | Säby 1, Seth,Säby | F3f | 48/64 | 100501 | 1650 | 1856 | 1604 | 720 | 1468 | 98,8 | 83 | 88 | 0 | | | | | | | |
| 800 | Enercon | 1225 | Säby 2, Ängla,Säby | F3f | 48/64 | 100501 | 1650 | 1744 | 1504 | 678 | 1376 | 98,7 | 79 | 87 | 0 | | | | | | | |
| 800 | Enercon | 1226 | Säby 3, Birk,Säby | F3f | 48/64 | 100501 | 1650 | 1740 | 1428 | 648 | 1339 | 98 | 77 | 85 | 12 | | | | | | | |
| 800 | Enercon | 1227 | Säby 4, Yrsa,Säby | F3f | 48/64 | 100501 | 1650 | 1759 | 1533 | 681 | 1388 | 99,2 | 82 | 88 | 4 | | | | | | | |
| 800 | Enercon | 1229 | Hedeberga,Tornelilla | D2c | 53/64 | 100215 | 2200 | 2220 | 2032 | 1054 | 1903 | 99 | 121 | 92 | 0 | | | | | | | |
| 800 | Enercon | 1244 | Vena Säby,Brålanda | C9a | 53/73 | 071201 | 1800 | 1807 | 1714 | 779 | 1626 | 98,3 | 78 | 88 | 10 | | | | | | | |
| 800 | Enercon | 1247 | Långöre 2, Herman,Långör | H5a | 53/73 | 100719 | 2500 | 2791 | 2685 | 1309 | 2599 | 96,3 | 184 | 92 | 21 | | | | | | | |
| 800 | Enercon | 1257 | Långöre 3,Långöre | H5a | 53/73 | 100901 | 2200 | 2750 | 2625 | 1389 | 2636 | 99,2 | 180 | 92 | 0 | | | | | | | |
| 800 | Enercon | 1312 | MellsaVind 1,Stora Mellösa | F10b | 53/73 | 100910 | 1580 | 1515 | 1344 | 591 | 1232 | 98,3 | 72 | 86 | 0 | | | | | | | |
| 800 | Enercon | 1318 | Kvismaren 3,Odensbacken | F10c | 53/74 | 101004 | 1550 | 1624 | 1509 | 620 | 1325 | 97,7 | 73 | 88 | 0 | | | | | | | |
| 800 | Enercon | 1371 | Mönarp 1, Universal Wind,K | D7g | 53/73 | 110301 | 1700 | 1255 | 1541 | 705 | 1472 | 98,8 | 75 | 91 | 0 | | | | | | | |
| 800 | Enercon | 1372 | Mönarp 2, Universal Wind,K | D7g | 53/73 | 110331 | 1700 | 1312 | 1573 | 699 | 1481 | 99,2 | 78 | 91 | 0 | | | | | | | |
| 800 | Enercon | 1373 | Mönarp 3, Universal Wind,K | D7g | 53/73 | 110331 | 1700 | 1155 | 1645 | 718 | 1535 | 99 | 81 | 92 | 1 | | | | | | | |
| 800 | Enercon | 1374 | Mönarp 4, Universal Wind,K | D7g | 53/73 | 110331 | 1700 | 1046 | 1462 | 722 | 1528 | 99,3 | 80 | 92 | 1 | | | | | | | |
| 800 | Enercon | 1558 | Varby 2,Varby | F8g | 53/73 | 110617 | 1750 | 1657 | 739 | 1539 | 98,9 | 82 | 87 | 13 | | | | | | | | |
| 800 | Enercon | 1637 | Skenaån Vind 1 Valdemar, | F8d | 53/73 | 120510 | 1800 | | 810 | 766 | 1575 | 98,8 | 87 | 87 | 1 | | | | | | | |
| 800 | Enercon | 1638 | Skenaån Vind 2 Bengt,Bjälb | F8d | 53/73 | 120510 | 1800 | 799 | 757 | 757 | 1556 | 98,8 | 82 | 87 | 1 | | | | | | | |
| 800 | Enercon | 1639 | Skenaån Vind 3 Kristina,Bjä | F8d | 53/73 | 120510 | 1800 | 829 | 750 | 750 | 1579 | 99 | 85 | 88 | 1 | | | | | | | |
| 850 | Vestas | 468 | Lanna 1, Lidköping,Lanna | C8f | 52/49 | 001228 | 1350 | 1492 | 1534 | 689 | 1422 | 99,5 | 71 | 75 | 8 | | | | | | | |
| 850 | Vestas | 487 | Roxett,Näsby | F8f | 52/55 | 010116 | 1470 | 1188 | 1052 | 335 | 795 | 93,3 | 46 | 53 | 37 | | | | | | | |
| 850 | Vestas | 488 | Skog 1,Söne | C8i | 52/65 | 010601 | 1870 | 1943 | 1709 | 730 | 1576 | 98,2 | 82 | 73 | 0 | | | | | | | |
| 850 | Vestas | 600 | Millingstorp I,Millingstorp | E8c | 52/65 | 010524 | 1870 | 1413 | 1168 | | 338 | 98,4 | | | | | | | | | | |
| 850 | Vestas | 601 | Runnestad I,Runnestad | E8c | 52/65 | 010803 | 1915 | 2006 | 1700 | 722 | 1511 | 97,7 | 80 | 69 | 24 | | | | | | | |
| 850 | Vestas | 602 | Högy I,Högy | F8d | 52/65 | 010906 | 1660 | 1535 | 1345 | 594 | 1220 | 98,7 | 67 | 69 | 24 | | | | | | | |
| 850 | Vestas | 603 | Ö-vik Inger,Norrväge | J19a | 52/55 | 010827 | 2160 | 1369 | 904 | 637 | 1192 | 92,7 | 66 | 58 | 0 | | | | | | | 1 |
| 850 | Vestas | 604 | Ö-vik Gun,Norrväge | J19a | 52/55 | 010928 | 2160 | 1406 | 1214 | 632 | 1262 | 92,5 | 69 | 57 | 0 | | | | | | | 1 |
| 850 | Vestas | 614 | Bränneberg 1,Jung | C8f | 52/49 | 010825 | 1400 | 1481 | 1417 | 508 | 1158 | 85,3 | 43 | 32 | 428 | | | | | | | |
| 850 | Vestas | 615 | Bränneberg 2,Jung | C8f | 52/49 | 010825 | 1400 | 1488 | 1420 | 731 | 1378 | 98,5 | 117 | 81 | 15 | | | | | | | |
| 850 | Vestas | 622 | Vitåkra, Everöd Brogård | D2c | 52/55 | 020115 | 1950 | 1644 | 1704 | 866 | 1596 | 98,5 | 91 | 75 | 1 | | | | | | | |
| 850 | Vestas | 623 | Skog 2,Söne | C8i | 52/74 | 020204 | 2000 | 2112 | 1887 | 760 | 1680 | 95,8 | 90 | 72 | 2 | | | | | | | |
| 850 | Vestas | 624 | Kampa 1,Kampagården Sm | D7h | 52/65 | 020128 | 1765 | 1564 | 1477 | 599 | 1320 | 92,4 | 66 | 60 | 18 | | | | | | | |
| 850 | Vestas | 625 | Herrgårdsvind, Hogstad,Ho | F8d | 52/65 | 020110 | 1705 | 1775 | 1578 | 682 | 1393 | 97,8 | 76 | 70 | 3 | | | | | | | |
| 850 | Vestas | 629 | Hill Mill,Rök | E8c | 52/65 | 020218 | 1850 | 1845 | 1583 | 689 | 1439 | 98,6 | 65 | 63 | 16 | | | | | | | |
| 850 | Vestas | 630 | Bårstad,Borghamn | E8f | 52/55 | 020222 | 2030 | 2162 | 1966 | 711 | 1662 | 94,6 | 70 | 58 | 7 | | | | | | | |
| 850 | Vestas | 632 | Spargodt,Tågarp | C3b | 52/65 | 011 | | | | | | | | | | | | | | | | |

| Ny * | Effekt (kW) | | Fabrikat | Nr Anläggning | Placering | D/H I drift | Ber MWh | 2011 MWh | 2012 MWh | 2013 MWh | 12mån MWh | 12mån % | Månad MWh | Tid % | Hindertid (tim) | | | | | | |
|------|-------------|------|------------------------------|---------------|-----------|-------------|---------|----------|----------|----------|-----------|---------|-----------|-------|-----------------|----|-----|-----|----|-----|----|
| | Hög | Låg | | | | | | | | | | | | | AHT | MS | VNS | OVS | PU | OPS | TF |
| 850 | Vestas | 691 | Lunnarp, Tommelilla,Lunnar | D2c | 52/65 | 030318 | 2300 | 1874 | 2062 | 1069 | 2011 | 99,8 | 121 | 83 | 0 | | | | | | |
| 850 | Vestas | 692 | Vallruns, Lucia,Vallrun | E20e | 52/55 | 030221 | 2000 | 1816 | 1484 | 850 | 1423 | 93,1 | 134 | 70 | 84 | | | | | | |
| 850 | Vestas | 702 | Åkesdal 1,Gårds Köpinge | D3c | 52/55 | 030116 | 1500 | 1428 | 1401 | 713 | 1286 | 98,5 | 73 | 78 | 0 | | | | | | |
| 850 | Vestas | 703 | Åkesdal 2,Gårds Köpinge | D3c | 52/55 | 030116 | 1500 | 1424 | 1486 | 714 | 1319 | 96,2 | 56 | 63 | 127 | | | | | | |
| 850 | Vestas | 704 | Åkesdal 3,Gårds Köpinge | D3c | 52/55 | 030116 | 1500 | 1438 | 1205 | 714 | 1316 | 99,3 | 71 | 78 | 0 | | | | | | |
| 850 | Vestas | 705 | Åkesdal 4,Gårds Köpinge | D3c | 52/55 | 030116 | 1500 | 1341 | 1472 | 706 | 1326 | 97,5 | 73 | 79 | 46 | | | | | | |
| 850 | Vestas | 706 | Åkesdal 5,Gårds Köpinge | D3c | 52/55 | 030116 | 1500 | 1418 | 1496 | 718 | 1334 | 98,7 | 75 | 80 | 39 | | | | | | |
| 850 | Vestas | 707 | Uvereds Vindkraftfför. V1,Uv | C8f | 52/50 | 030615 | 1250 | 1624 | 1429 | 643 | 1323 | 99,7 | 66 | 69 | 0 | | | | | | |
| 850 | Vestas | 708 | Uvereds Vindkraftfför. V2,Uv | C8f | 52/50 | 030615 | 1250 | 1484 | 1329 | 599 | 1228 | 99,7 | 61 | 67 | 0 | | | | | | |
| 850 | Vestas | 709 | Uvereds Vindkraftfför. V3,Uv | C8f | 52/50 | 030615 | 1250 | 1522 | 1340 | 610 | 1249 | 99,6 | 63 | 69 | 0 | | | | | | |
| 850 | Vestas | 710 | Uvereds Vindkraftfför. V4,Uv | C8f | 52/50 | 030615 | 1250 | 1507 | 1329 | 544 | 1177 | 99,4 | 61 | 66 | 6 | | | | | | |
| 850 | Vestas | 711 | Uvereds Vindkraftfför. V5,Uv | C8f | 52/50 | 030615 | 1250 | 1523 | 1379 | 622 | 1282 | 99,2 | 65 | 68 | 5 | | | | | | |
| 850 | Vestas | 716 | Kärragården 6,Bjåresjö | D2b | 52/55 | 030408 | 1800 | 1908 | 1864 | 967 | 1801 | 99,1 | 106 | 80 | 0 | | | | | | |
| 850 | Vestas | 717 | Kärragården, Lidan,Bjåresjö | D2b | 52/55 | 030410 | 1850 | 2100 | 1877 | 988 | 1857 | 97,8 | 112 | 82 | 0 | | | | | | |
| 850 | Vestas | 719 | Grimskullen,Grimskullen Ma | D7g | 52/65 | 010405 | 1800 | 1767 | 1622 | 734 | 1536 | 99,5 | 75 | 70 | 5 | | | | | | |
| 850 | Vestas | 720 | Stora Lund,Stora Lund | D8g | 52/74 | 030714 | 1500 | 1636 | 1437 | 631 | 1332 | 99,1 | 69 | 68 | 0 | | | | | | |
| 850 | Vestas | 721 | Skeby 2,Källby | D8g | 52/49 | 030723 | 1200 | 1361 | 1165 | 523 | 1075 | 91,1 | 46 | 48 | 167 | | | | | | |
| 850 | Vestas | 722 | Fritorp,Sparlösa Fritorp | C8e | 52/74 | 030714 | 1700 | 1830 | 1693 | 733 | 1580 | 97,4 | 84 | 72 | 10 | | | | | | |
| 850 | Vestas | 723 | Erikstorp 2,Lundsbrunn | D8h | 52/74 | 031024 | | 1397 | 1221 | 519 | 1110 | 99,6 | 58 | 66 | 0 | | | | | | |
| 850 | Vestas | 724 | Grebban 3, Tanumshede,T | A9f | 52/50 | 030706 | 1600 | 1763 | 1584 | 637 | 1484 | 99,1 | 81 | 72 | 0 | | | | | | |
| 850 | Vestas | 725 | Kärrets Gärd II,Långås | B5f | 52/74 | 031125 | 1760 | 1728 | 1709 | 735 | 1649 | 99,7 | 95 | 73 | 8 | | | | | | |
| 850 | Vestas | 726 | Glänås Vind,Väderstad | E8c | 52/65 | 031115 | 1700 | 1956 | 1663 | 697 | 1459 | 98,1 | 77 | 66 | 34 | | | | | | |
| 850 | Vestas | 727 | Valla Vind,Runnestad | E8c | 52/65 | 031107 | 1700 | 1809 | 1610 | 684 | 1435 | 97,3 | 75 | 68 | 34 | | | | | | |
| 850 | Vestas | 728 | Skeby/Tungelunda I,Väders | E8c | 52/74 | 031107 | 1800 | 2021 | 1751 | 748 | 1543 | 97,9 | 80 | 69 | 30 | | | | | | |
| 850 | Vestas | 729 | Skeby/Tungelunda II,Väder | E8c | 52/74 | 031107 | 1800 | 2065 | 1772 | | 807 | 99,9 | | | | | | | | | |
| 850 | Vestas | 730 | Skeby/Tungelunda III,Väder | E8c | 52/74 | 031107 | 1800 | 1628 | 1714 | | 821 | 100 | | | | | | | | | |
| 850 | Vestas | 731 | Elvinda, RockLunda,Rocklun | F8g | 52/65 | 031103 | 1600 | 1862 | 1615 | 715 | 1472 | 97,9 | 77 | 70 | 26 | | | | | | |
| 850 | Vestas | 732 | Stavlösa Vind I,Stavlösa | E8f | 52/65 | 031205 | 1750 | 2049 | 1823 | 747 | 1621 | 98,2 | 68 | 57 | 82 | | | | | | |
| 850 | Vestas | 733 | Stavlösa Vind II,Stavlösa | E8f | 52/65 | 031205 | 1750 | 2106 | 1847 | 789 | 1669 | 99,3 | 83 | 71 | 7 | | | | | | |
| 850 | Vestas | 734 | Stavlösa Vind III,Stavlösa | F8d | 52/65 | 031205 | 1750 | 2055 | 1802 | 749 | 1618 | 95,9 | 79 | 69 | 23 | | | | | | |
| 850 | Vestas | 739 | Mofalla Laggarebolet,Lagga | E8d | 52/65 | 031210 | | 1653 | 1435 | 586 | 1270 | 99,6 | 64 | 74 | 1 | | | | | | |
| 850 | Vestas | 743 | Heås, Sibräcka,Sibräcka | B7g | 52/60 | 040121 | 1900 | 2508 | 2432 | 1003 | 2313 | 99,6 | 122 | 84 | 0 | | | | | | |
| 850 | Vestas | 748 | Björnskallen, Kajsa,Ljungda | C18f | 52/65 | 031211 | 1900 | 1447 | 1287 | 581 | 1021 | 88,9 | 116 | 68 | 1 | | | | | | |
| 850 | Vestas | 749 | Sparlösa,Sparlösa | C8e | 52/65 | 030901 | 1650 | 1725 | 1577 | 684 | 1458 | 97,6 | 80 | 73 | 18 | | | | | | |
| 850 | Vestas | 751 | Stenkil,Stenskilvarv, Varv | F8g | 52/65 | 040128 | 1700 | 1721 | 1531 | 610 | 1334 | 96,7 | 42 | 49 | 197 | | | | | | |
| 850 | Vestas | 762 | Kvismaren 1,Odensbacken | F10c | 52/74 | 040401 | 1430 | 1618 | 1099 | 574 | 1227 | 98,2 | 65 | 65 | 0 | | | | | | |
| 850 | Vestas | 764 | Ölanda,Istrum | D8h | 52/74 | 040225 | 1400 | 1378 | 1243 | 533 | 1134 | 97,8 | 61 | 68 | 1 | | | | | | |
| 850 | Vestas | 766 | Andersfält, 1SYD,Tönnersa | C4e | 52/65 | 040131 | 1700 | 1729 | 1637 | 676 | 1497 | 99,4 | 96 | 76 | 0 | | | | | | |
| 850 | Vestas | 767 | Andersfält, 2 MITT,Tönners | C4e | 52/65 | 040131 | 1750 | 1656 | 1664 | 741 | 1640 | 99,4 | 103 | 76 | 0 | | | | | | |
| 850 | Vestas | 768 | Andersfält, 3 NORR,Tömne | C4e | 52/65 | 040131 | 1750 | 1922 | 1804 | 712 | 1622 | 98,2 | 89 | 59 | 87 | | | | | | |
| 850 | Vestas | 769 | Långeryd I,Långeryd | F8d | 52/65 | 040506 | 1750 | 2133 | 1816 | 788 | 1685 | 99,2 | 80 | 70 | 1 | | | | | | |
| 850 | Vestas | 770 | Långeryd II,Långeryd | F8d | 52/65 | 040506 | 1750 | 2091 | 1841 | 776 | 1677 | 99,5 | 79 | 70 | 1 | | | | | | |
| 850 | Vestas | 773 | Brunnstorp Källby, Broby-Br | D8g | 52/74 | 040713 | 1500 | 1594 | 1537 | 665 | 1431 | 98,4 | 73 | 66 | 4 | | | | | | |
| 850 | Vestas | 784 | St Wahlby,Väderstad | F8d | 52/74 | 041206 | 1850 | 2160 | 1865 | 773 | 1645 | 99,6 | 84 | 70 | 6 | | | | | | |
| 850 | Vestas | 786 | Isberget I,Skonberga | F8e | 52/74 | 050103 | 1600 | 1908 | 1601 | 698 | 1439 | 99,6 | 76 | 67 | 2 | | | | | | |
| 850 | Vestas | 787 | Isberget II,Skonberga | F8e | 52/74 | 050103 | 1600 | 1848 | 1551 | 671 | 1380 | 99,7 | 72 | 67 | 2 | | | | | | |
| 850 | Vestas | 788 | Isberget III,Skonberga | F8e | 52/74 | 050103 | 1600 | 1825 | 1554 | 682 | 1397 | 98,9 | 71 | 68 | 2 | | | | | | |
| 850 | Vestas | 794 | Blås ut Vind AB,Lundsbrun | D8g | 52/74 | 041213 | 1500 | 1535 | 1345 | 595 | 1259 | 99,3 | 67 | 68 | 0 | | | | | | |
| 850 | Vestas | 795 | Kilabacken Vind AB,Lunds | D8g | 52/74 | 050118 | 1550 | 1879 | 1651 | 642 | 1455 | 95,2 | 53 | 53 | 162 | | | | | | |
| 850 | Vestas | 796 | Ova Vind,Lundsbrunn | D8g | 52/74 | 050116 | 1500 | 1627 | 1511 | 632 | 1373 | 98,7 | 73 | 66 | 39 | | | | | | |
| 850 | Vestas | 797 | Ryda Vind AB,Ryda | C8b | 52/74 | 050127 | 1600 | 1886 | 1745 | 798 | 1658 | 99,8 | 86 | 73 | 0 | | | | | | |
| 850 | Vestas | 799 | Storön 1,Storön | M25c | 52/65 | 050201 | 1700 | 1885 | 1807 | 799 | 1661 | 97,6 | 96 | 68 | 1 | | | | | | |
| 850 | Vestas | 800 | Hunflen, Ferdinand 20615, | E13a | 52/65 | 050403 | 1800 | 2239 | 1968 | 935 | 1916 | 99,6 | 118 | 78 | 4 | | | | | | |
| 850 | Vestas | 801 | Hunflen, Vilhelm 20616,Äpp | E13a | 52/65 | 050504 | 1800 | 1857 | 1746 | 822 | 1696 | 99,9 | 89 | 66 | 36 | | | | | | |
| 850 | Vestas | 802 | Viglunda,Skara | D8d | 52/72 | 050517 | 1600 | 1735 | 1491 | 627 | 1368 | 98,2 | 73 | 71 | 0 | | | | | | |
| 850 | Vestas | 804 | Östest-kröket,Tännäs | C17f | 52/55 | 051124 | 1900 | 2655 | 2367 | 1154 | 2081 | 94 | 185 | 86 | 1 | | | | | | |
| 850 | Vestas | 820 | Lönhult,Lönhults gård | C3d | 52/74 | 051017 | 1875 | 2341 | 2275 | 968 | 2067 | 98,6 | 129 | 81 | 1 | | | | | | |
| 850 | Vestas | 840 | Uljeberg,Uljebergs Säteri | F8e | 52/74 | 051221 | 1400 | 1654 | 1418 | 606 | 1236 | 99,7 | 66 | 68 | 4 | | | | | | |
| 850 | Vestas | 842 | Vannborga Övra,Borgholm | H5a | 52/44 | 041231 | 1700 | 2024 | 1936 | 846 | 1695 | 97 | 91 | 77 | 1 | | | | | | |
| 850 | Vestas | 843 | Vannborga Nedra,Borgholm | H5a | 52/44 | 041231 | 1700 | 2257 | 2106 | 905 | 1878 | 99,2 | 101 | 75 | 6 | | | | | | |
| 850 | Vestas | 844 | Ekekullen,Dintestorp | D7h | 52/74 | 051228 | 1650 | 1708 | 1556 | 560 | 1304 | 99,2 | | | | | | | | | |
| 850 | Vestas | 848 | Örum Ystad,Örum | D2c | 52/65 | 050520 | 2400 | 2473 | 2362 | 1299 | 2360 | 98 | 148 | 84 | 0 | | | | | | |
| 850 | Vestas | 853 | Lyckevind Istrum,Istrum | D8e | 52/74 | 061130 | 1400 | 1478 | 1287 | 555 | 1189 | 99,1 | 64 | 70 | 5 | | | | | | |
| 850 | Vestas | 855 | Brönnestad 3,Brönnestad B | C1i | 52/52 | 070206 | 2050 | 2321 | 2254 | 1063 | 2094 | 99 | 128 | 83 | 0 | | | | | | |
| 850 | Vestas | 977 | Uvbergets Hanna,Smedjeb | F12e | 52/74 | 070105 | 1800 | 1852 | 1615 | 798 | 1550 | 99,7 | 85 | 72 | 0 | | | | | | |
| 850 | Vestas | 1001 | Börstad 1,Börstad | F8d | 52/65 | 070308 | 1750 | 2103 | 1753 | 748 | 1601 | 99,4 | 75 | 70 | 1 | | | | | | |
| 850 | Vestas | 1011 | Storön 2,Storön | M25c | 52/74 | 081011 | 1650 | 2159 | 1985 | 924 | 1842 | 95,4 | 109 | 69 | 1 | | | | | | |
| 850 | Vestas | 1028 | Räfsjö Vind 1,Räfsjö Säteri | F8d | 52/74 | 080711 | 1700 | 2249 | 1896 | 820 | 1782 | 98,8 | 82 | 67 | 20 | | | | | | |
| 850 | Vestas | 1031 | Varnås vind,Väderstad | F8d | 52/74 | 090218 | 1800 | 2032 | 1737 | 709 | 1518 | 98,5 | 77 | 66 | 4 | | | | | | |
| 850 | Vestas | 1103 | TÖS,Väderstad | E8f | 52/74 | 090115 | 1800 | 2151 | 1870 | 784 | 1646 | 98,5 | 88 | 64 | 66 | | | | | | |
| 850 | Vestas | 1253 | Uvbergets Boel,Smedjebac | F12e | 52/74 | 100601 | 1500 | 1725 | 1518 | 763 | 1458 | 97,8 | 72 | 66 | 33 | | | | | | |
| 850 | Gamesa | 1575 | Åskekäll 1,Töreboda | D9c | 58/65 | 110301 | | 1041 | 704 | 464 | 1005 | 99,5 | 70 | 69 | 0 | | | | | | |
| 850 | Gamesa | 1576 | Åskekäll 2,Töreboda | D9c | 58/65 | | | | | | | | | | | | | | | | |

| Ny * | Effekt (kW) | | Fabrikat | Nr Anläggning | Placering | D/H I drift | Ber MWh | 2011 MWh | 2012 MWh | 2013 MWh | 12mån MWh | 12mån % | Månad MWh | Tid % | Hindertid (tim) | | | | | | | | |
|------|-------------|------------|----------|----------------------------|-----------|-------------|---------|----------|----------|----------|-----------|---------|-----------|-------|-----------------|-------|-----|-----|----|-----|-----|----|-----|
| | Hög | Låg | | | | | | | | | | | | | Benämning, Ort | Karta | (m) | AHT | MS | YNS | OVS | PU | OPS |
| 900 | 200 | NEG Micon | 735 | Stenninge 1,Stenninge | H5d | 52/49 | 040111 | 1900 | 2350 | 2184 | 913 | 1937 | 99,8 | 116 | 82 | 1 | | | | | | | |
| 900 | 200 | NEG Micon | 736 | Badane 2,Kättilstorp | D7h | 52/72 | 030911 | | 1618 | 1381 | 588 | 1244 | 96,1 | 62 | 81 | 3 | | | | | | | |
| 900 | 200 | NEG Micon | 737 | Badane 3,Kättilstorp | D7h | 52/72 | 030910 | | 1591 | 1385 | 612 | 1273 | 99,4 | 62 | 80 | 1 | | | | | | | |
| 900 | 200 | NEG Micon | 742 | Ångalid II,Svalöv | C2h | 52/70 | 040108 | 1900 | 2214 | 1781 | 1069 | 1732 | 84,9 | 120 | 84 | 23 | | | | | | | |
| 900 | 200 | NEG Micon | 755 | Kuling I,Falkenberg | B5f | 52/60 | 040107 | 1930 | 1305 | 1285 | 628 | 1184 | 80,6 | 47 | 44 | 318 | | | | | | | |
| 900 | 200 | NEG Micon | 756 | Kuling II,Falkenberg | B5f | 52/60 | 040107 | 1930 | 1426 | 1600 | 690 | 1521 | 99,8 | 91 | 80 | 3 | | | | | | | |
| 900 | 200 | NEG Micon | 757 | Kuling III,Falkenberg | B5f | 52/60 | 040107 | 1930 | 1685 | 1561 | 705 | 1561 | 99,8 | 95 | 80 | 1 | | | | | | | |
| 900 | 200 | NEG Micon | 758 | Kuling IV,Falkenberg | B5f | 52/60 | 040107 | 1930 | 1493 | 1536 | 654 | 1438 | 97,8 | 98 | 82 | 0 | | | | | | | |
| 900 | 200 | NEG Micon | 759 | Kuling V,Falkenberg | B5f | 52/60 | 040107 | 1930 | 1612 | 1618 | 651 | 1492 | 97,2 | 97 | 80 | 9 | | | | | | | |
| 1000 | | Nordic | 438 | Sigwards 2,Näs | I5f | 54/60 | 000818 | 2400 | 1967 | 929 | 523 | 1185 | 88,4 | 71 | 39 | 15 | | | | | | | |
| 1000 | | Nordic | 681 | Gerda Dragabol,Halmstad | C4h | 59/70 | 030103 | 2000 | 1335 | 1225 | 475 | 1181 | 82,2 | 33 | 19 | 370 | | | | | | | |
| 1000 | | WinWind | 850 | Alva af Hulta,Askersund | F9a | 64/72 | 070125 | 2200 | 2648 | 2402 | 921 | 2100 | 100 | 120 | | | | | | | | | |
| 1000 | | WinWind | 1030 | Paljakos Gunilla,Grängesbe | E12c | 64/70 | 080130 | 2700 | 2770 | 2331 | 876 | 1966 | 100 | 121 | | | | | | | | | |
| 1000 | | WinWind | 1032 | Ryda Vind 2,Ryda | C8b | 64/70 | 090128 | 2000 | 2147 | 1997 | 624 | 1532 | 100 | 113 | | | | | | | | | |
| 1000 | | WinWind | 1046 | Sörgårdsvind 1, Moholm,Mo | D8i | 64/70 | 070630 | 2000 | 2138 | 1264 | 513 | 1167 | 100 | 89 | | | | | | | | | |
| 1000 | | WinWind | 1066 | Brunnsgården, Näs, Falköpi | D7h | 64/70 | 070614 | 2200 | 2229 | 1732 | 904 | 1706 | 100 | 93 | | | | | | | | | |
| 1000 | | WinWind | 1124 | Hästhalla 1,Skara | C8f | 64/70 | 070501 | 2200 | 2661 | 1283 | 1002 | 1598 | 100 | 117 | | | | | | | | | |
| 1000 | | WinWind | 1359 | Ova Vind 2, Broby | D8g | 64/70 | 061124 | 2000 | 2382 | 1491 | 769 | 1427 | 100 | 96 | | | | | | | | | |
| 1000 | | WinWind | 1697 | Bodberget 1,Harsjön | F21h | 64/70 | 060901 | 2150 | | 361 | 715 | 1076 | 100 | 159 | | | | | | | | | |
| 1500 | | GE Wind En | 642 | Assmäsa 1, Assmäsa | D2b | 70,5/65 | 020712 | 3475 | 2960 | 2457 | 1340 | 2180 | 89,7 | 161 | 77 | 0 | | | | | | | |
| 1500 | | GE Wind En | 643 | Assmäsa 2, Assmäsa | D2b | 70,5/65 | 020712 | 3475 | 2759 | 2665 | 1304 | 2462 | 97 | 150 | 74 | 0 | | | | | | | |
| 1500 | | GE Wind En | 644 | Assmäsa 3, Assmäsa | D2b | 70,5/65 | 020712 | 3475 | 2651 | 2083 | 1301 | 2266 | 91,5 | 151 | 75 | 0 | | | | | | | |
| 1500 | | Enercon | 645 | Hedagården 1,Hedagården | C3b | 66/65 | 020901 | 3700 | 4169 | 3996 | 1710 | 3573 | 94 | 232 | 93 | 12 | | | | | | | |
| 1500 | | Enercon | 646 | Hedagården 4,Hedagården | C3b | 66/65 | 020901 | 3700 | 3718 | 3440 | 1738 | 3345 | 91,5 | 213 | 94 | 3 | | | | | | | |
| 1500 | | Enercon | 647 | Hedagården 5,Hedagården | C3b | 66/65 | 020901 | 3700 | 3814 | 3395 | 1659 | 3362 | 93,7 | 195 | 92 | 14 | | | | | | | |
| 1500 | | Enercon | 675 | Hedagården 2,Hedagården | C3b | 70/65 | 030101 | 3700 | 3876 | 3901 | 1736 | 3565 | 95,1 | 225 | 94 | 3 | | | | | | | |
| 1500 | | Enercon | 676 | Hedagården 3,Hedagården | C3b | 70/65 | 030101 | 3700 | 3447 | 3374 | 1637 | 3337 | 92,6 | 221 | 95 | 0 | | | | | | | |
| 1500 | | Enercon | 677 | Hedagården 6,Hedagården | C3b | 70/65 | 030101 | 3700 | 3430 | 3733 | 1700 | 3418 | 93,2 | 164 | 81 | 89 | | | | | | | |
| 1500 | | Enercon | 714 | Annevind 1,Annelöv | C2h | 70/65 | 030615 | 3700 | 3744 | 3051 | 1685 | 3060 | 92,7 | 215 | 92 | 11 | | | | | | | |
| 1500 | | Enercon | 715 | Annevind 2,Annelöv | C2h | 70/65 | 030615 | 3700 | 3772 | 2403 | 1748 | 3388 | 96,5 | 220 | 92 | 17 | | | | | | | |
| 1500 | | Vestas | 777 | Offerdal Råshön 1,Ånge | E19g | 82/78 | 041207 | 4031 | 4199 | 3602 | 1810 | 3345 | 93,3 | 303 | 75 | 46 | | | | | | | |
| 1500 | | Vestas | 778 | Offerdal Råshön 2,Ånge | E19g | 82/78 | 041205 | 4319 | 4215 | 4097 | 2112 | 3895 | 91,8 | 373 | 81 | 9 | | | | | | | |
| 1500 | | Vestas | 779 | Offerdal Råshön 3,Ånge | E19g | 82/78 | 041208 | 3613 | 4238 | 3715 | 1969 | 3547 | 95,1 | 323 | 79 | 9 | | | | | | | |
| 1500 | | Vestas | 780 | Offerdal Råshön 4,Ånge | E19g | 82/78 | 041208 | 4023 | 3994 | 3588 | 1909 | 3385 | 93,2 | 303 | 80 | 13 | | | | | | | |
| 1500 | | Vestas | 781 | Offerdal Råshön 5,Ånge | E19g | 82/78 | 041203 | 4032 | 3930 | 3369 | 1990 | 3275 | 91,6 | 328 | 80 | 8 | | | | | | | |
| 1500 | | Vestas | 782 | Offerdal Råshön 6,Ånge | E19g | 82/78 | 041205 | 4054 | 3683 | 3223 | 1893 | 3254 | 93,4 | 323 | 81 | 7 | | | | | | | |
| 1500 | | Vestas | 783 | Offerdal Råshön 7,Ånge | E19h | 82/78 | 041203 | 3955 | 4118 | 3594 | 1847 | 3340 | 95,6 | 320 | 80 | 12 | | | | | | | |
| 1500 | | Vestas | 790 | Västraby 1 SV,Löberöd | D2g | 80/78 | 040806 | 4800 | 5189 | 5003 | 2093 | 4423 | 98,2 | 263 | 85 | 8 | | | | | | | |
| 1500 | | Vestas | 791 | Västraby 2 NO,Västraby | D2g | 80/78 | 040806 | 4800 | 4912 | 4534 | 1801 | 3816 | 93,8 | 186 | 65 | 142 | | | | | | | |
| 1500 | | Vestas | 792 | Västraby 3 SV,Västraby | D2g | 80/78 | 040806 | 4800 | 4366 | 4748 | 2078 | 4238 | 97 | 249 | 84 | 0 | | | | | | | |
| 1500 | | Vestas | 793 | Västraby 4 NO,Västraby | D2g | 80/78 | 040806 | 4800 | 4538 | 4418 | 1828 | 3799 | 96,2 | 224 | 82 | 2 | | | | | | | |
| 1500 | | Vestas | 809 | Aapua 1,Aapua | M27i | 82/78 | 051003 | 4465 | 5183 | 4461 | 2311 | 4409 | 93,3 | 325 | 77 | 30 | | | | | | | |
| 1500 | | Vestas | 810 | Aapua 2,Aapua | M27i | 82/78 | 050929 | 4232 | 4820 | 4095 | 2170 | 4079 | 93,6 | 289 | 78 | 20 | | | | | | | |
| 1500 | | Vestas | 811 | Aapua 3,Aapua | M27i | 82/78 | 050928 | 4140 | 4342 | 3864 | 1939 | 3711 | 91,7 | 267 | 76 | 19 | | | | | | | |
| 1500 | | Vestas | 812 | Aapua 4,Aapua | M27i | 82/78 | 050928 | 4344 | 5068 | 4474 | 2253 | 4265 | 84,7 | 303 | 78 | 19 | | | | | | | |
| 1500 | | Vestas | 813 | Aapua 5,Aapua | M27i | 82/78 | 050928 | 4397 | 5002 | 4297 | 2259 | 4228 | 92,1 | 291 | 78 | 19 | | | | | | | |
| 1500 | | Vestas | 814 | Aapua 6,Aapua | M27i | 82/78 | 050928 | 4500 | 5218 | 4299 | 2296 | 4262 | 91,1 | 307 | 78 | 54 | | | | | | | |
| 1500 | | Vestas | 815 | Aapua 7,Aapua | M27i | 82/78 | 050928 | 4613 | 5341 | 4334 | 2384 | 4437 | 88,9 | 344 | 80 | 20 | | | | | | | |
| 1500 | | Enercon | 888 | Nygårdshus 2, Eslöv | D2g | 66/65 | 041001 | 4200 | 3620 | 3438 | 1781 | 3415 | 95 | 202 | 95 | 0 | | | | | | | |
| 1500 | | Enercon | 889 | p.Olofsson Energi,Eslöv | D2g | 70/86 | 041101 | 4100 | 2811 | 3541 | 1700 | 3304 | 98,8 | 196 | 95 | 0 | | | | | | | |
| 1500 | | Vestas | 1029 | Gråsjön Anja,Kall | D20d | 66/60 | 000101 | 2000 | 1989 | 1616 | 606 | 1050 | 70,7 | 105 | 29 | 104 | | | | | | | |
| 1500 | | Vestas | 1152 | Gans 1,Nåsudden | I5i | 90/80 | 090301 | | 7231 | 6623 | 2928 | 6228 | 83,1 | 396 | 85 | 7 | | | | | | | |
| 1500 | | Vestas | 1153 | Gans 2,Nåsudden | I5i | 90/80 | 090301 | | 7191 | 6461 | 2826 | 6162 | 96,5 | 388 | 85 | 3 | | | | | | | |
| 1500 | | Vestas | 1154 | Gans 3,Nåsudden | I5i | 90/80 | 090301 | | 7189 | 6536 | 2790 | 6220 | 98,6 | 380 | 84 | 1 | | | | | | | |
| 1500 | | Vestas | 1155 | Gans 4,Nåsudden | I5i | 90/80 | 090301 | | 7069 | 6385 | 2788 | 6165 | 98,3 | 368 | 85 | 0 | | | | | | | |
| 1500 | | Enercon | 1199 | Granberget Vindpark 1,Sike | L21d | 82/98 | 091103 | 5500 | 4939 | 5000 | 2335 | 4696 | 97,4 | 298 | 93 | 16 | | | | | | | |
| 1500 | | Enercon | 1200 | Granberget Vindpark 2,Sike | L21d | 82/98 | 091103 | 5500 | 4642 | 4671 | 2294 | 4551 | 96,6 | 282 | 95 | 1 | | | | | | | |
| 1500 | | Enercon | 1201 | Granberget Vindpark 3,Sike | L21d | 82/98 | 091103 | 5500 | 4941 | 4983 | 2415 | 4786 | 94,8 | 303 | 96 | 1 | | | | | | | |
| 1500 | | Enercon | 1202 | Granberget Vindpark 4,Sike | L21d | 82/98 | 091103 | 5500 | 4917 | 4791 | 2181 | 4492 | 91,1 | 292 | 94 | 12 | | | | | | | |
| 1500 | | Enercon | 1203 | Granberget Vindpark 5,Sike | L21d | 82/98 | 091103 | 5500 | 4894 | 5147 | 2584 | 4984 | 95,2 | 300 | 95 | 1 | | | | | | | |
| 1500 | | Enercon | 1204 | Granberget Vindpark 6,Sike | L21d | 82/98 | 091103 | 5500 | 5213 | 4678 | 2476 | 4630 | 93,7 | 263 | 91 | 35 | | | | | | | |
| 1500 | | Enercon | 1391 | Söderbodane 3,Söderboda | C9g | 82/108 | 110107 | 4500 | 5099 | 4845 | 1981 | 4346 | 99,2 | 226 | 96 | 0 | 5 | | | | | | |
| 1500 | 300 | Vestas | 386 | Slitevind XXIV,Smöjen | J7c | 66/67 | 990824 | 4119 | 3376 | 3009 | 1366 | 2840 | 96,4 | 148 | 50 | 19 | | | | | | | |
| 1500 | 300 | Vestas | 387 | Slitevind XXV,Smöjen | J7c | 66/67 | 990824 | 3970 | 3453 | 3151 | 1491 | 3093 | 98,1 | 169 | 63 | 0 | | | | | | | |
| 1500 | 300 | Vestas | 388 | Slitevind XXVI,Smöjen | J7c | 66/67 | 990828 | 4266 | 3744 | 1177 | 0 | 1 | 34,9 | | | | | | | | | | |
| 1500 | 300 | Vestas | 389 | Slitevind XXVII,Smöjen | J7c | 66/67 | 990826 | 4298 | 3675 | 3395 | 1646 | 3435 | 94,5 | 211 | 58 | 0 | | | | | | | |
| 1500 | 300 | Vestas | 422 | Svireg, Skåls 12,Näs | I5f | 66/67 | 000121 | 4550 | 4398 | 3358 | 1461 | 3139 | 93,2 | 182 | 51 | 14 | | | | | | | |
| 1500 | 300 | Vestas | 474 | Storugns 7,Lärbro | J7e | 66/78 | 010317 | 3377 | 3340 | 3022 | 1258 | 2678 | 98,2 | 147 | 77 | 8</ | | | | | | | |

| Ny * | Effekt (kW) | | Fabrikat | Nr Anläggning | Placering | D/H I drift | Ber MWh | 2011 MWh | 2012 MWh | 2013 MWh | 12mån MWh | 12mån % | Månad MWh | Tid % | Hindertid (tim) | | | | | | |
|------|-------------|------|------------------------------|---------------|-----------|-------------|---------|----------|----------|----------|-----------|---------|-----------|-------|-----------------|----|-----|-----|----|-----|----|
| | Hög | Låg | | | | | | | | | | | | | AHT | MS | YNS | OVS | PU | OPS | TF |
| 1800 | Vestas | 1099 | Västergården 4,Brålanda | C9a | 90/95 | 090109 | 5300 | 5082 | 4739 | 2377 | 4846 | 96,5 | 240 | 73 | 2 | | | | | | |
| 1800 | Vestas | 1100 | Tängelsbol 5,Brålanda | C9a | 90/95 | 090109 | 5400 | 5545 | 5134 | 2370 | 4841 | 93,3 | 264 | 74 | 69 | | | | | | |
| 1800 | Vestas | 1101 | Tängelsbol 6,Brålanda | C9a | 90/95 | 090109 | 5400 | 5415 | 5478 | 2376 | 5142 | 99 | 259 | 74 | 2 | | | | | | |
| 1800 | Vestas | 1276 | Havnäs Vindkraftpark D15, | F21c | 90/95 | 100705 | 5337 | 6470 | 5306 | 2731 | 4806 | 98,6 | 438 | 83 | 10 | | | | | | |
| 1800 | Vestas | 1278 | Havnäs Vindkraftpark D17, | F21c | 90/95 | 100705 | 5337 | 6672 | 5657 | 3072 | 5354 | 99,1 | 482 | 85 | 12 | | | | | | |
| 1800 | Vestas | 1282 | Havnäs Vindkraftpark D21, | F21c | 90/95 | 100705 | 5337 | 6750 | 5706 | 3099 | 5428 | 99,1 | 488 | 83 | 16 | | | | | | |
| 1800 | Vestas | 1392 | Lyngby 1,Everöd | D2i | 90/95 | 071022 | 5200 | 4581 | 5218 | 2296 | 4596 | 99,1 | 300 | 83 | 6 | | | | | | |
| 1800 | Vestas | 1418 | Stor-Rotliden A-03,Stor-Rotl | I21e | 90/95 | 100930 | 5725 | 7191 | 5089 | 2999 | 4934 | 93,3 | 371 | 0 | 0 | | | | | | |
| 1800 | Vestas | 1419 | Stor-Rotliden A-04,Stor-Rotl | I21e | 90/95 | 101028 | 5725 | 7175 | 5220 | 2893 | 4987 | 96,1 | 385 | 0 | 0 | | | | | | |
| 1800 | Vestas | 1420 | Stor-Rotliden A-05,Stor-Rotl | I21e | 90/95 | 100928 | 5725 | 7041 | 5100 | 2910 | 4896 | 96,3 | 377 | 0 | 0 | | | | | | |
| 1800 | Vestas | 1421 | Stor-Rotliden A-06,Stor-Rotl | I21e | 90/95 | 100930 | 5725 | 6510 | 4714 | 2693 | 4435 | 95,2 | 360 | 0 | 0 | | | | | | |
| 1800 | Vestas | 1437 | Stor-Rotliden C-03,Stor-Rotl | I21e | 90/95 | 100820 | 5725 | 6271 | 4964 | 2730 | 4810 | 96,9 | 374 | 0 | 0 | | | | | | |
| 1800 | Vestas | 1438 | Stor-Rotliden C-04,Stor-Rotl | I21e | 90/95 | 100820 | 5725 | 5916 | 4692 | 2502 | 4459 | 96,7 | 354 | 0 | 0 | | | | | | |
| 1800 | Vestas | 1445 | Stor-Rotliden C-11,Stor-Rotl | I21e | 90/95 | 100908 | 5725 | 6360 | 4944 | 2706 | 4695 | 84,6 | 370 | 0 | 0 | | | | | | |
| 1800 | Vestas | 1447 | Stor-Rotliden D-02,Stor-Rotl | I21e | 90/95 | 100813 | 5725 | 6490 | 4857 | 2826 | 4684 | 88 | 386 | 0 | 0 | | | | | | |
| 1800 | Vestas | 1448 | Stor-Rotliden D-03,Stor-Rotl | I21e | 90/95 | 100813 | 5725 | 6695 | 5194 | 3051 | 5211 | 93,6 | 397 | 0 | 0 | | | | | | |
| 1800 | Vestas | 1453 | Stor-Rotliden D-08,Stor-Rotl | I21e | 90/95 | 100729 | 5725 | 5593 | 4478 | 2625 | 4515 | 95,3 | 359 | 0 | 0 | | | | | | |
| 1800 | Vestas | 1455 | Stor-Rotliden D-10,Stor-Rotl | I21e | 90/95 | 100729 | 5725 | 5996 | 5003 | 2741 | 4704 | 94,5 | 380 | 0 | 0 | | | | | | |
| 1800 | Vestas | 1456 | Östra Herrestad A-01,Östra | D2c | 90/80 | 101011 | 6333 | 7121 | 6981 | 3449 | 6647 | 99,2 | 411 | 0 | 0 | | | | | | |
| 1800 | Vestas | 1457 | Östra Herrestad A-02,Östra | D2c | 90/80 | 101014 | 6333 | 6834 | 6782 | 3260 | 6378 | 99,3 | 402 | 0 | 0 | | | | | | |
| 1800 | Vestas | 1458 | Östra Herrestad A-03,Östra | D2c | 90/80 | 101019 | 6333 | 6864 | 6676 | 3304 | 6379 | 99,6 | 398 | 0 | 0 | | | | | | |
| 1800 | Vestas | 1459 | Östra Herrestad A-04,Östra | D2c | 90/80 | 101008 | 6333 | 7094 | 6923 | 3297 | 6455 | 99,3 | 415 | 0 | 0 | | | | | | |
| 1800 | Vestas | 1460 | Östra Herrestad A-05,Östra | D2c | 90/80 | 101018 | 6333 | 6715 | 6514 | 3380 | 6313 | 97,4 | 397 | 0 | 0 | | | | | | |
| 1800 | Vestas | 1461 | Östra Herrestad B-01,Östra | D2c | 90/80 | 101007 | 6333 | 6527 | 7050 | 3482 | 6734 | 99,3 | 412 | 0 | 0 | | | | | | |
| 1800 | Vestas | 1462 | Östra Herrestad B-02,Östra | D2c | 90/80 | 101021 | 6333 | 7158 | 6883 | 3367 | 6615 | 99,2 | 415 | 0 | 0 | | | | | | |
| 1800 | Vestas | 1463 | Östra Herrestad B-03,Östra | D2c | 90/80 | 101028 | 6333 | 7153 | 6990 | 3431 | 6661 | 99 | 411 | 0 | 0 | | | | | | |
| 1800 | Vestas | 1464 | Östra Herrestad B-04,Östra | D2c | 90/80 | 101025 | 6333 | 6509 | 6669 | 3226 | 6218 | 98,4 | 391 | 0 | 0 | | | | | | |
| 1800 | Vestas | 1550 | Sängsjön 1,Torvsele | H21e | 90/105 | 111030 | 5500 | 653 | 5273 | 2854 | 5032 | 92,1 | 390 | 86 | 217 | | | | | | |
| 1800 | Vestas | 1551 | Sängsjön 2,Torvsele | H21e | 90/105 | 111030 | 5500 | 729 | 6278 | 3421 | 6123 | 93,4 | 460 | 87 | 217 | | | | | | |
| 1800 | Vestas | 1552 | Sängsjön 3,Torvsele | H21e | 90/105 | 111030 | 5500 | 678 | 5509 | 2970 | 5452 | 93,4 | 406 | 86 | 218 | | | | | | |
| 1800 | Vestas | 1712 | Vassmolösa 1,Vassmolösa | G4e | 100/95 | 120717 | 5100 | | 521 | 2679 | 3200 | 91,8 | 312 | 87 | 7 | | | | | | |
| 1800 | Vestas | 1713 | Vassmolösa 2,Vassmolösa | G4e | 100/95 | 120717 | 5100 | | 501 | 2548 | 3049 | 92 | 307 | 86 | 5 | | | | | | |
| 1800 | Vestas | 1714 | Vassmolösa 3,Vassmolösa | G4e | 100/95 | 120717 | 5100 | | 470 | 2391 | 2861 | 90,8 | 311 | 87 | 5 | | | | | | |
| 1800 | Vestas | 1715 | Vassmolösa 4,Vassmolösa | G4e | 100/95 | 120717 | 5100 | | 505 | 2350 | 2855 | 91,8 | 290 | 86 | 5 | | | | | | |
| 1800 | Vestas | 1716 | Vassmolösa 5,Vassmolösa | G4e | 100/95 | 120717 | 5100 | | 474 | 2359 | 2834 | 90,5 | 280 | 79 | 65 | | | | | | |
| 1800 | Vestas | 1724 | Högtjärnklocks Vindpark, H | G12h | 100/95 | 121001 | 5400 | | 3091 | 3091 | 3091 | 99,4 | 362 | 78 | 5 | | | | | | |
| 1800 | Vestas | 1725 | Högtjärnklocks Vindpark, A | G12h | 100/95 | 121001 | 5400 | | 3040 | 3040 | 3040 | 99,6 | 364 | 78 | 1 | | | | | | |
| 1800 | Vestas | 1726 | Högtjärnklocks Vindpark, H | G12h | 100/95 | 121001 | 5400 | | 3107 | 3107 | 3107 | 98,2 | 355 | 76 | 29 | | | | | | |
| 1800 | Vestas | 1727 | Högtjärnklocks Vindpark, R | G12h | 100/95 | 121001 | 5400 | | 3154 | 3154 | 3154 | 99,7 | 356 | 79 | 1 | | | | | | |
| 1800 | Vestas | 1728 | Högtjärnklocks Vindpark, To | G12h | 100/95 | 121001 | 5400 | | 3032 | 3032 | 3032 | 99,7 | 332 | 78 | 2 | | | | | | |
| 1800 | Vestas | 1729 | Högtjärnklocks Vindpark, D | G12h | 100/95 | 121001 | 5400 | | 2885 | 2885 | 2885 | 99,9 | 348 | 78 | 1 | | | | | | |
| 1800 | Vestas | 1730 | Högtjärnklocks Vindpark, Ås | G12h | 100/95 | 121001 | 5400 | | 3290 | 3290 | 3290 | 99,8 | 381 | 80 | 1 | | | | | | |
| 1800 | Vestas | 1731 | Rockneby 1,Rockneby | G5b | 100/95 | 120817 | 5200 | | 1651 | 2336 | 3987 | 99 | 289 | 83 | 5 | | | | | | |
| 1800 | Vestas | 1732 | Rockneby 2,Rockneby | G5b | 100/95 | 120817 | 5200 | | 1691 | 2385 | 4076 | 99,2 | 284 | 80 | 36 | | | | | | |
| 1800 | Vestas | 1733 | Rockneby 3,Rockneby | G5b | 100/95 | 120817 | 5200 | | 1636 | 2322 | 3958 | 99 | 284 | 82 | 5 | | | | | | |
| 1800 | Vestas | 1734 | Rockneby 4,Rockneby | G5b | 100/95 | 120817 | 5200 | | 1608 | 2326 | 3934 | 99,6 | 280 | 84 | 5 | | | | | | |
| 1800 | Vestas | 1735 | Rockneby 5,Rockneby | G5b | 100/95 | 120817 | 5200 | | 1513 | 2391 | 3903 | 97,3 | 290 | 83 | 5 | | | | | | |
| 2000 | Vestas | 738 | Skåls Nås, Slitevind XXIX,S | I5f | 80/78 | 031214 | 6000 | 6309 | 5414 | 2348 | 5174 | 97,5 | 325 | 83 | 16 | | | | | | |
| 2000 | Enercon | 774 | Orup 1,Rolsberga | D2g | 70/65 | 041201 | 3500 | 3651 | 3329 | 1220 | 2660 | 93,8 | | | | | | | | | |
| 2000 | Enercon | 821 | Långå 1,Långå | D17e | 70/85 | 051007 | 5400 | 4287 | 3632 | 1838 | 3241 | 94,1 | 268 | 90 | 65 | | | | | | |
| 2000 | Enercon | 822 | Långå 2,Långå | D17e | 70/85 | 051017 | 5400 | 3869 | 3383 | 1525 | 2760 | 93,9 | 247 | 91 | 58 | | | | | | |
| 2000 | Enercon | 823 | Långå 3,Långå | D17e | 70/85 | 051024 | 5400 | 4071 | 3537 | 1795 | 3176 | 93,7 | 278 | 93 | 43 | | | | | | |
| 2000 | Enercon | 824 | Långå 4,Långå | D17e | 70/85 | 051031 | 5400 | 4480 | 3882 | 1984 | 3466 | 93,7 | 299 | 94 | 40 | | | | | | |
| 2000 | Enercon | 825 | Långå 5,Långå | D17e | 70/85 | 051108 | 5400 | 4407 | 3780 | 1812 | 3273 | 93,6 | 246 | 90 | 64 | | | | | | |
| 2000 | Enercon | 845 | Odarslöv 1,Eslöv | C2f | 70/64 | 060720 | 4900 | 4661 | 3750 | 2035 | 4023 | 97,3 | 227 | 88 | 55 | | | | | | |
| 2000 | Enercon | 846 | Odarslöv 2,Eslöv | C2i | 70/64 | 060720 | 4900 | 4872 | 4342 | 1990 | 3958 | 96,8 | 241 | 96 | 0 | | | | | | |
| 2000 | Enercon | 847 | Odarslöv 3,Eslöv | C2i | 70/64 | 060720 | 4900 | 4620 | 4116 | 1970 | 3842 | 97,4 | 224 | 95 | 1 | | | | | | |
| 2000 | Enercon | 856 | Värlinge 1,Stehag | C2i | 82/78 | 070119 | 5500 | 4851 | 4537 | 1932 | 4114 | 96,2 | | | | | | | | | |
| 2000 | Enercon | 857 | Värlinge 2,Stehag | C2i | 82/78 | 070309 | 5500 | 4170 | 3916 | 1903 | 3995 | 94,8 | | | | | | | | | |
| 2000 | Enercon | 868 | Stora Istad 1,Stora Istad | H5a | 82/78 | 070501 | 5500 | 5986 | 5557 | 2649 | 5422 | 91,8 | 291 | 94 | 168 | | | | | | |
| 2000 | Enercon | 869 | Stora Istad 2,Stora Istad | H5a | 82/78 | 070501 | 5500 | 5611 | 4896 | 2176 | 4694 | 85,9 | 282 | 95 | 162 | | | | | | |
| 2000 | Enercon | 870 | Stora Istad 3,Stora Istad | H5a | 82/78 | 070501 | 5500 | 4692 | 4739 | 2476 | 4883 | 85,5 | 284 | 94 | 169 | | | | | | |
| 2000 | Enercon | 871 | Stora Istad 4,Stora Istad | H5a | 82/78 | 070501 | 5500 | 5526 | 4844 | 2480 | 4971 | 89,2 | 273 | 89 | 196 | | | | | | |
| 2000 | Enercon | 872 | Stora Istad 5,Stora Istad | H5a | 82/78 | 070501 | 5500 | 5835 | 4911 | 2018 | 4201 | 72,3 | | | | | | | | | |
| 2000 | Vestas | 878 | Hornberget 1,Aspliden | I23e | 90/80 | 070111 | 6000 | 6527 | 4628 | 2709 | 4903 | 100 | 406 | 89 | 0 | | | | | | |
| 2000 | Vestas | 879 | Hornberget 2,Aspliden | I23e | 90/80 | 070111 | 6000 | 6351 | 5253 | 2379 | 4559 | 97,7 | 360 | 93 | 0 | | | | | | |
| 2000 | Vestas | 880 | Hornberget 3,Aspliden | I23e | 90/80 | 070111 | 6000 | 7189 | 6753 | 2500 | 5902 | 100 | 414 | 87 | 0 | | | | | | |
| 2000 | Vestas | 881 | Hornberget 4,Aspliden | I23e | 90/80 | 070111 | 6000 | 7681 | 4514 | 2821 | 4937 | 100 | 462 | 91 | 0 | | | | | | |
| 2000 | Vestas | 882 | Hornberget 5,Aspliden | I23e | 90/80 | 070111 | 6000 | 6985 | 5226 | 2195 | 4126 | 96,5 | 438 | 95 | 0 | | | | | | |
| 2000 | Vestas | 939 | Lyngby 2, Rose-Marie G,Ly | D2i | 90/95 | 071201 | 5200 | 4971 | 4964 | 2257 | 4442 | 98 | 287 | 82 | 6 | | | | | | |
| 2000 | Enercon | 957 | Entorp 1,Ardala | D8d | 82/78 | 071126 | 4400 | 4715 | 4005 | 1635 | 3604 | 98,1 | 20 | | | | | | | | |

| Ny * | Effekt (kW) | | Fabrikat | Nr Anläggning | Placering | D/H | I drift | Ber MWh | 2011 MWh | 2012 MWh | 2013 MWh | 12mån MWh | 12mån % | Månad MWh | Tid % | Hindertid (tim) | | | | | | |
|------|-------------|------|-------------------------------|---------------|-----------|--------|---------|---------|----------|----------|----------|-----------|---------|-----------|-------|-----------------|-------|-----|-----|----|-----|-----|
| | Hög | Låg | | | | | | | | | | | | | | Benämning, Ort | Karta | (m) | AHT | MS | VNS | OVS |
| 2000 | Enercon | 1188 | Gärdslösa 5,Gärdslösa | H4g | 82/78 | 100301 | 5100 | 4775 | 4529 | 2176 | 4453 | 96,3 | 269 | 94 | 10 | | | | | | | |
| 2000 | Enercon | 1190 | Påboda 1,Påboda | G4b | 82/98 | 100301 | 4900 | 5017 | 5110 | 2701 | 5134 | 96,3 | 307 | 96 | 23 | | | | | | | |
| 2000 | Enercon | 1191 | Påboda 2,Påboda | G4b | 82/98 | 100301 | 4900 | 5225 | 5206 | 2654 | 5011 | 96,4 | 298 | 95 | 27 | | | | | | | |
| 2000 | Vestas | 1222 | Vallerstad, Gudrun,Vallersta | D5i | 90/105 | 091201 | 6000 | 7139 | 7045 | 3185 | 6599 | 99,7 | 379 | 85 | 0 | | | | | | | |
| 2000 | Vestas | 1223 | Vallerstad, Mathilda,Vallerst | D5i | 90/105 | 091209 | 6000 | 7088 | 6670 | 3105 | 6337 | 99,6 | 360 | 84 | 0 | | | | | | | |
| 2000 | Vestas | 1228 | Holmsund 3,Holmsund | K20e | 90/80 | 070501 | | 5884 | 6030 | 2982 | 5857 | 96,8 | 284 | 64 | 87 | | | | | | | |
| 2000 | Enercon | 1230 | Ugglum 1-Ugglum Vindpark | C9a | 82/108 | 090821 | 5500 | 6109 | 5799 | 2736 | 5679 | 98,7 | 248 | 89 | 23 | | | | | | | |
| 2000 | Enercon | 1231 | Ugglum 2-Ugglum Vindpark | C9a | 82/108 | 090901 | 5500 | 5558 | 5770 | 2715 | 5665 | 98,5 | 249 | 90 | 9 | | | | | | | |
| 2000 | Vestas | 1232 | Gunnarstorp, Sven,Flakebe | C8e | 90/95 | 100601 | 5400 | 5921 | 5498 | 2118 | 4949 | 93,5 | | | | | | | | | | |
| 2000 | Vestas | 1233 | Gunnarstorp, Malte,Flakebe | C8e | 90/95 | 100601 | 5400 | 5886 | 5541 | 2138 | 4973 | 98,1 | | | | | | | | | | |
| 2000 | Vestas | 1234 | Gunnarstorp, Astrid,Flakeb | C8e | 90/95 | 100601 | 5400 | 6009 | 5702 | 2188 | 5102 | 98,4 | | | | | | | | | | |
| 2000 | Vestas | 1235 | Ulvstorp, Djerf,Flakeberg G | C8e | 90/95 | 100601 | 5200 | 5653 | 5210 | 1960 | 4635 | 97,1 | | | | | | | | | | |
| 2000 | Vestas | 1236 | Ulvstorp, Emil,Flakeberg Gu | C8e | 90/95 | 100601 | 5200 | 5593 | 5150 | 1940 | 4573 | 97,5 | | | | | | | | | | |
| 2000 | Enercon | 1237 | Ringsjö Vind,Snogeröd | D2g | 82/98 | 100501 | 5000 | 5459 | 5476 | 2493 | 5041 | 98,4 | 295 | 96 | 6 | | | | | | | |
| 2000 | Enercon | 1238 | Solberga 1,Korsberga | E8a | 82/108 | 100111 | 5300 | 6279 | 5700 | 2428 | 5196 | 98,3 | 281 | 93 | 18 | | | | | | | |
| 2000 | Enercon | 1239 | Åsperöd 1,Åsperöd | D2e | 82/78 | 100601 | 5400 | 4691 | 4402 | 2278 | 4242 | 95,7 | 247 | 95 | 16 | | | | | | | |
| 2000 | Vestas | 1240 | Lårstad 1,Motala | F8g | 90/90 | 100517 | 5400 | 6746 | 6530 | 2392 | 5614 | 99,2 | | | | | | | | | | |
| 2000 | Vestas | 1241 | Lårstad 2,Motala | F8g | 90/90 | 100524 | 5400 | 7110 | 6508 | 2361 | 5561 | 99,2 | | | | | | | | | | |
| 2000 | Vestas | 1242 | Västraby V90 NO,Västraby | D2g | 90/78 | 100601 | 5400 | 6121 | 5820 | 2706 | 5363 | 98,4 | 300 | 82 | 21 | | | | | | | |
| 2000 | Vestas | 1243 | Lynghbygård 4, Ingeborg,Lyn | D2i | 90/95 | 100701 | 5200 | 5169 | 5257 | 2408 | 4622 | 91,7 | 293 | 83 | 7 | | | | | | | |
| 2000 | Enercon | 1245 | Nårefors 1,Järpås | C8f | 82/98 | 100710 | 5300 | 6024 | 5797 | 2506 | 5403 | 98,9 | 279 | 92 | 7 | | | | | | | |
| 2000 | Enercon | 1246 | Nårefors 2,Järpås | C8f | 82/98 | 100710 | 5300 | 6180 | 5780 | 2503 | 5395 | 99,5 | 278 | 93 | 4 | | | | | | | |
| 2000 | Vestas | 1248 | Tumleberg 4,Tumleberg | C8b | 90/105 | 090901 | 5400 | 5625 | 5308 | 2135 | 4775 | 91,8 | 211 | 64 | 119 | | | | | | | |
| 2000 | Vestas | 1249 | Tumleberg 5,Tumleberg | C8b | 90/105 | 090901 | 5400 | 5242 | 5079 | 2179 | 4636 | 93,2 | 258 | 77 | 6 | | | | | | | |
| 2000 | Vestas | 1250 | Jordberga, AT1,Klagstorp | C1i | 90/80 | 100506 | 6300 | 7492 | 7436 | 3540 | 7147 | 99,3 | 471 | 89 | 0 | | | | | | | |
| 2000 | Vestas | 1251 | Jordberga, AT2,Klagstorp | C1i | 90/80 | 100506 | 6300 | 6826 | 6403 | 3112 | 6311 | 93,2 | 417 | 84 | 22 | | | | | | | |
| 2000 | Vestas | 1252 | Jordberga, AT3,Klagstorp | C1i | 90/80 | 100506 | 6300 | 6985 | 6963 | 3363 | 6625 | 97,9 | 396 | 79 | 34 | | | | | | | |
| 2000 | Vestas | 1254 | Nås Drift AB, Backgården,N | D7h | 90/105 | 100720 | 5400 | 6333 | 5783 | 2535 | 5375 | 94 | 277 | 79 | 7 | | | | | | | |
| 2000 | Vestas | 1255 | Nås Drift AB, Björstorp,Vart | D7h | 90/105 | 100720 | 5400 | 6487 | 5902 | 2581 | 5522 | 93,8 | 295 | 79 | 5 | | | | | | | |
| 2000 | Enercon | 1256 | Åsperöd 2,Åsperöd | D2e | 82/78 | 100601 | 5400 | 4781 | 4223 | 2368 | 4285 | 91,8 | 259 | 91 | 47 | | | | | | | |
| 2000 | Enercon | 1258 | Ramdala 1, Julia,Ramdala | F3f | 82/98 | 100901 | 5400 | 5796 | 5471 | 2799 | 5351 | 96,1 | 307 | 94 | 15 | | | | | | | |
| 2000 | Enercon | 1259 | Ramdala 2, Bondevind,Ram | F3f | 82/98 | 100901 | 5400 | 5841 | 5564 | 2809 | 5438 | 97 | 310 | 94 | 12 | | | | | | | |
| 2000 | Enercon | 1260 | Skarstad,Skarstad | C8c | 82/98 | 100618 | 5200 | 6173 | 5897 | 2507 | 5394 | 98,7 | 275 | 91 | 19 | | | | | | | |
| 2000 | Enercon | 1261 | Stockebäck,Lundsbrunn | D8g | 82/108 | 100618 | 5200 | 6044 | 5571 | 2288 | 5116 | 98,5 | 286 | 95 | 0 | | | | | | | |
| 2000 | Vestas | 1262 | Havnäs Vindkraftpark D1,H | F21c | 90/95 | 100705 | 5337 | 7247 | 6233 | 2908 | 5535 | 99,2 | 455 | 82 | 17 | | | | | | | |
| 2000 | Vestas | 1263 | Havnäs Vindkraftpark D2,H | F21c | 90/95 | 100705 | 5337 | 6562 | 5605 | 2611 | 4918 | 99,2 | 401 | 81 | 16 | | | | | | | |
| 2000 | Vestas | 1264 | Havnäs Vindkraftpark D3,H | F21c | 90/95 | 100705 | 5337 | 6634 | 5664 | 2678 | 5036 | 99,4 | 412 | 82 | 15 | | | | | | | |
| 2000 | Vestas | 1265 | Havnäs Vindkraftpark D4,H | F21c | 90/95 | 100705 | 5337 | 6400 | 5561 | 2612 | 4890 | 99,2 | 407 | 81 | 14 | | | | | | | |
| 2000 | Vestas | 1266 | Havnäs Vindkraftpark D5,H | F21c | 90/95 | 100705 | 5337 | 6565 | 5543 | 2571 | 4902 | 98,9 | 387 | 80 | 20 | | | | | | | |
| 2000 | Vestas | 1267 | Havnäs Vindkraftpark D6,H | F21c | 90/95 | 100705 | 5337 | 6868 | 5550 | 2732 | 4920 | 98,9 | 412 | 82 | 15 | | | | | | | |
| 2000 | Vestas | 1268 | Havnäs Vindkraftpark D7,H | F21c | 90/95 | 100705 | 5337 | 7172 | 5942 | 3129 | 5426 | 97,9 | 490 | 82 | 16 | | | | | | | |
| 2000 | Vestas | 1269 | Havnäs Vindkraftpark D8,H | F21c | 90/95 | 100705 | 5337 | 6949 | 5722 | 2961 | 5252 | 99 | 445 | 82 | 19 | | | | | | | |
| 2000 | Vestas | 1270 | Havnäs Vindkraftpark D9,H | F21c | 90/95 | 100705 | 5337 | 6610 | 5472 | 2640 | 4871 | 99 | 386 | 81 | 15 | | | | | | | |
| 2000 | Vestas | 1271 | Havnäs Vindkraftpark D10, | F21c | 90/95 | 100705 | 5337 | 6733 | 5407 | 2786 | 4916 | 99,3 | 412 | 82 | 16 | | | | | | | |
| 2000 | Vestas | 1272 | Havnäs Vindkraftpark D11, | F21f | 90/95 | 100705 | 5337 | 6904 | 5924 | 3023 | 5501 | 99,3 | 477 | 84 | 7 | | | | | | | |
| 2000 | Vestas | 1273 | Havnäs Vindkraftpark D12, | F21f | 90/95 | 100705 | 5337 | 6970 | 5645 | 3067 | 5571 | 98,9 | 480 | 83 | 13 | | | | | | | |
| 2000 | Vestas | 1274 | Havnäs Vindkraftpark D13, | F21c | 90/95 | 100705 | 5337 | 7013 | 5986 | 2970 | 5355 | 98,1 | 453 | 83 | 14 | | | | | | | |
| 2000 | Vestas | 1275 | Havnäs Vindkraftpark D14, | F21f | 90/95 | 100705 | 5337 | 6511 | 5238 | 2694 | 4787 | 99,5 | 410 | 82 | 4 | | | | | | | |
| 2000 | Vestas | 1277 | Havnäs Vindkraftpark D16, | F21c | 90/95 | 100705 | 5337 | 7452 | 6176 | 3287 | 5783 | 99 | 493 | 83 | 20 | | | | | | | |
| 2000 | Vestas | 1279 | Havnäs Vindkraftpark D18, | F21c | 90/95 | 100705 | 5337 | 7066 | 5893 | 3161 | 5484 | 98,1 | 501 | 82 | 20 | | | | | | | |
| 2000 | Vestas | 1280 | Havnäs Vindkraftpark D19, | F21c | 90/95 | 100705 | 5337 | 6639 | 5751 | 3063 | 5333 | 99,4 | 471 | 84 | 5 | | | | | | | |
| 2000 | Vestas | 1281 | Havnäs Vindkraftpark D20, | F21c | 90/95 | 100705 | 5337 | 7509 | 6239 | 3248 | 5766 | 97,7 | 495 | 81 | 29 | | | | | | | |
| 2000 | Vestas | 1283 | Havnäs Vindkraftpark E1,H | F21c | 90/95 | 100705 | 5337 | 6532 | 5913 | 2998 | 5478 | 98,8 | 481 | 84 | 5 | | | | | | | |
| 2000 | Vestas | 1284 | Havnäs Vindkraftpark E2,H | F21c | 90/95 | 100705 | 5337 | 5917 | 5233 | 2496 | 4603 | 98,7 | 387 | 81 | 9 | | | | | | | |
| 2000 | Vestas | 1285 | Havnäs Vindkraftpark E3,H | F21c | 90/95 | 100705 | 5337 | 5456 | 4890 | 2354 | 4303 | 98,7 | 363 | 81 | 5 | | | | | | | |
| 2000 | Vestas | 1286 | Havnäs Vindkraftpark E4,H | F21c | 90/95 | 100705 | 5337 | 4991 | 4733 | 2250 | 4135 | 98,8 | 328 | 79 | 4 | | | | | | | |
| 2000 | Vestas | 1287 | Havnäs Vindkraftpark E5,H | F21c | 90/95 | 100705 | 5337 | 5434 | 4994 | 2453 | 4441 | 98,8 | 389 | 82 | 5 | | | | | | | |
| 2000 | Vestas | 1288 | Havnäs Vindkraftpark E6,H | F21c | 90/95 | 100705 | 5337 | 5833 | 5296 | 2768 | 5002 | 98,8 | 448 | 83 | 5 | | | | | | | |
| 2000 | Vestas | 1289 | Havnäs Vindkraftpark E7,H | F21c | 90/95 | 100705 | 5337 | 6107 | 5392 | 2809 | 5067 | 98,7 | 455 | 83 | 5 | | | | | | | |
| 2000 | Vestas | 1290 | Havnäs Vindkraftpark E8,H | F21c | 90/95 | 100705 | 5337 | 5845 | 5104 | 2646 | 4805 | 98,7 | 419 | 83 | 4 | | | | | | | |
| 2000 | Vestas | 1291 | Havnäs Vindkraftpark E9,H | F21c | 90/95 | 100705 | 5337 | 5389 | 4637 | 2320 | 4179 | 98,6 | 360 | 82 | 5 | | | | | | | |
| 2000 | Vestas | 1292 | Havnäs Vindkraftpark E10, | F21c | 90/95 | 100705 | 5337 | 5144 | 4676 | 2414 | 4274 | 98,5 | 387 | 32 | 10 | | | | | | | |
| 2000 | Vestas | 1293 | Havnäs Vindkraftpark E11, | F21c | 90/95 | 100705 | 5337 | 5759 | 5033 | 2592 | 4613 | 98,5 | 402 | 83 | 6 | | | | | | | |
| 2000 | Vestas | 1294 | Havnäs Vindkraftpark F1,H | F21c | 90/95 | 100705 | 5337 | 6418 | 5748 | 3032 | 5448 | 99,1 | 485 | 83 | 6 | | | | | | | |
| 2000 | Vestas | 1295 | Havnäs Vindkraftpark F2,H | F21c | 90/95 | 100705 | 5337 | 6495 | 5966 | 3252 | 5784 | 99,4 | 508 | 84 | 5 | | | | | | | |
| 2000 | Vestas | 1296 | Havnäs Vindkraftpark F3,H | F21c | 90/95 | 100705 | 5337 | 5624 | 4995 | 2704 | 4770 | 99,4 | 429 | 81 | 9 | | | | | | | |
| 2000 | Vestas | 1297 | Havnäs Vindkraftpark F4,H | F21c | 90/95 | 100705 | 5337 | 5511 | 4914 | 2743 | 4806 | 98,9 | 434 | 82 | 5 | | | | | | | |
| 2000 | Vestas | 1298 | Havnäs Vindkraftpark F5,H | F21c | 90/95 | 100705 | 5337 | 5520 | 4671 | 2540 | 4430 | 99,2 | 390 | 81 | 5 | | | | | | | |
| 2000 | Vestas | 1299 | Havnäs Vindkraftpark F6,H | F21c | 90/95 | 100705 | 5337 | 5778 | 5035 | 2794 | 4896 | 99,3 | 427 | 81 | 14 | | | </ | | | | |

| Ny * | Effekt (kW) | | Fabrikat | Nr Anläggning | Placering | D/H | I drift | Ber MWh | 2011 MWh | 2012 MWh | 2013 MWh | 12mån MWh | 12mån % | Månad MWh | Tid % | Hindertid (tim) | | | | | | |
|------|-------------|------|-------------------------------|---------------|-----------|--------|---------|---------|----------|----------|----------|-----------|---------|-----------|-------|-----------------|-------|-----|-----|----|-----|-----|
| | Hög | Låg | | | | | | | | | | | | | | Benämning, Ort | Karta | (m) | AHT | MS | YNS | OVS |
| 2000 | Vestas | 1325 | Götala 1,Motala | F8d | 90/105 | 101029 | 5300 | 6656 | 6153 | 2664 | 5662 | 98,4 | 289 | 79 | 6 | | | | | | | |
| 2000 | Vestas | 1326 | Götala 2,Motala | F8d | 90/105 | 101029 | 5300 | 6672 | 6189 | 2738 | 5725 | 99 | 297 | 80 | 1 | | | | | | | |
| 2000 | Vestas | 1327 | Götala 3,Motala | F8d | 90/105 | 101029 | 5300 | 6617 | 6220 | 2695 | 5752 | 98,9 | 291 | 78 | 6 | | | | | | | |
| 2000 | Vestas | 1328 | Götala 4,Motala | F8d | 90/105 | 101029 | 5300 | 6648 | 6180 | 2743 | 5760 | 99,1 | 291 | 78 | 6 | | | | | | | |
| 2000 | Vestas | 1329 | Tavelberget 1,Linghed | G14a | 90/105 | 100818 | 6500 | 7828 | 6961 | 3326 | 6602 | 98,9 | 391 | 83 | 0 | | | | | | | |
| 2000 | Vestas | 1330 | Tavelberget 2,Linghed | G13g | 90/105 | 100822 | 6500 | 7329 | 6673 | 3072 | 6225 | 98,1 | 358 | 83 | 0 | | | | | | | |
| 2000 | Vestas | 1331 | Tavelberget 3,Linghed | G13g | 90/105 | 100908 | 6500 | 7117 | 6428 | 3128 | 6134 | 98,3 | 352 | 78 | 28 | | | | | | | |
| 2000 | Vestas | 1332 | Tavelberget 4,Linghed | G13g | 90/105 | 100826 | 6500 | 7641 | 7067 | 3452 | 6829 | 99 | 408 | 83 | 0 | | | | | | | |
| 2000 | Vestas | 1333 | Tavelberget 5,Linghed | G13g | 90/105 | 100904 | 6500 | 6964 | 6387 | 3218 | 6272 | 98,4 | 365 | 81 | 3 | | | | | | | |
| 2000 | Vestas | 1334 | Topperyd verk 3,Topperyd | E6h | 90/105 | 101202 | 5100 | 6688 | 5870 | 2674 | 5598 | 98,7 | 308 | 83 | 6 | | | | | | | |
| 2000 | Vestas | 1347 | Bliekeväre 10,Norråker | F22f | 90/80 | 081103 | 5356 | 5297 | 3992 | 2557 | 4109 | 92,5 | 405 | 83 | 43 | | | | | | | |
| 2000 | Vestas | 1348 | Bliekeväre 11,Norråker | F22f | 90/80 | 081103 | 5069 | 5193 | 4174 | 2551 | 4180 | 94,6 | 372 | 80 | 67 | | | | | | | |
| 2000 | Vestas | 1349 | Bliekeväre 12,Norråker | F22f | 90/80 | 081103 | 4683 | 4540 | 3577 | 2050 | 3452 | 96,6 | 327 | 86 | 1 | | | | | | | |
| 2000 | Vestas | 1350 | Bliekeväre 13,Norråker | F22f | 90/80 | 081103 | 5597 | 5449 | 4674 | 2726 | 4682 | 94,5 | 390 | 72 | 127 | | | | | | | |
| 2000 | Vestas | 1351 | Bliekeväre 14,Norråker | F22f | 90/80 | 081103 | 5696 | 4894 | 4258 | 2446 | 4304 | 93,5 | 330 | 67 | 153 | | | | | | | |
| 2000 | Vestas | 1352 | Bliekeväre 15,Norråker | F22f | 90/80 | 081103 | 5733 | 5475 | 4755 | 2665 | 4671 | 96,4 | 421 | 79 | 74 | | | | | | | |
| 2000 | Vestas | 1353 | Bliekeväre 16,Norråker | F22f | 90/80 | 081103 | 5127 | 4691 | 3874 | 2158 | 3688 | 95,1 | 328 | 79 | 59 | | | | | | | |
| 2000 | Vestas | 1354 | Bliekeväre 17,Norråker | F22f | 90/80 | 101001 | 4972 | 4993 | 4009 | 2324 | 3851 | 95,7 | 352 | 84 | 22 | | | | | | | |
| 2000 | Vestas | 1356 | Strömstad, Neanberg 1 Nor | A9i | 90/95 | 101201 | 5500 | 5042 | 5901 | 2538 | 5754 | 98,7 | 337 | 82 | 45 | | | | | | | |
| 2000 | Vestas | 1357 | Strömstad, Neanberg 2 Mitt | A9i | 90/95 | 101201 | 5500 | 4617 | 5356 | 2329 | 5237 | 98,5 | 301 | 80 | 45 | | | | | | | |
| 2000 | Vestas | 1358 | Strömstad, Neanberg 3 Syd | A9i | 90/95 | 101201 | 5500 | 4922 | 5742 | 2479 | 5636 | 98,6 | 320 | 82 | 44 | | | | | | | |
| 2000 | Vestas | 1360 | Brasmaviken, Pelekulla 1,F | E8g | 90/105 | 101215 | 5200 | 6974 | 6736 | 2640 | 6142 | 99,3 | 203 | 50 | 4 | | | | | | | |
| 2000 | Vestas | 1361 | Brasmaviken, Pelekulla 2,F | E8g | 90/105 | 101215 | 5200 | 6151 | 6311 | 2472 | 5543 | 99,1 | 321 | 85 | 3 | | | | | | | |
| 2000 | Enercon | 1362 | Prässeberg 1 Mitt, Lilla Edet | B8c | 82/98 | 100901 | 5500 | 4286 | 4987 | 2242 | 4783 | 98 | 257 | 95 | 8 | | | | | | | |
| 2000 | Enercon | 1363 | Prässeberg 2 Väst, Lilla Ed | B8c | 82/98 | 100901 | 5500 | 4227 | 4602 | 2047 | 4332 | 95,1 | 220 | 92 | 23 | | | | | | | |
| 2000 | Enercon | 1364 | Prässeberg 3 Öst, Lilla Edet | B8c | 82/98 | 100901 | 5500 | 3740 | 4447 | 2040 | 4223 | 97,4 | 229 | 95 | 4 | | | | | | | |
| 2000 | Vestas | 1365 | Topperyd 1,Topperyd | E6h | 90/105 | 101201 | 5200 | 5108 | 5656 | 2458 | 5175 | 98,7 | 290 | 83 | 3 | | | | | | | |
| 2000 | Vestas | 1366 | Topperyd 2,Topperyd | E6h | 90/105 | 101201 | 5200 | 4976 | 5446 | 2442 | 5041 | 98,2 | 275 | 80 | 12 | | | | | | | |
| 2000 | Vestas | 1367 | Topperyd 4,Topperyd | E6h | 90/105 | 101201 | 5200 | 4994 | 5489 | 2403 | 5054 | 99,4 | 277 | 82 | 5 | | | | | | | |
| 2000 | Enercon | 1368 | Skånings Åsaka 1,Skånings | D8d | 82/98 | 100820 | 5000 | 5626 | 5063 | 2060 | 4583 | 99 | 260 | 94 | 0 | | | | | | | |
| 2000 | Enercon | 1369 | Skånings Åsaka 2,Skånings | D8d | 82/98 | 100820 | 5000 | 5187 | 4694 | 1997 | 4345 | 98,6 | 242 | 94 | 0 | | | | | | | |
| 2000 | Enercon | 1370 | Skånings Åsaka 3,Skånings | D8d | 82/98 | 100820 | 5000 | 5338 | 4900 | 2076 | 4544 | 98,9 | 249 | 95 | 0 | | | | | | | |
| 2000 | Vestas | 1375 | Mossebol 1,Erikstad | C9a | 90/105 | 110301 | 5500 | 2904 | 5794 | 2542 | 5539 | 79,3 | 268 | 78 | 14 | | | | | | | |
| 2000 | Vestas | 1376 | Fågelbacka 1,Erikstad | C9a | 90/105 | 110301 | 5500 | 2624 | 5559 | 2512 | 5366 | 78,5 | 259 | 77 | 14 | | | | | | | |
| 2000 | Vestas | 1377 | Fågelbacka 2,Erikstad | C9a | 90/105 | 110301 | 5500 | 2755 | 5487 | 2519 | 5313 | 76,9 | 249 | 72 | 76 | | | | | | | |
| 2000 | Vestas | 1378 | Kråkedalen 1,Erikstad | C9a | 90/105 | 110301 | 5500 | 2816 | 5778 | 2593 | 5590 | 78,2 | 270 | 77 | 22 | | | | | | | |
| 2000 | Vestas | 1379 | Kråkedalen 2,Erikstad | C9a | 90/105 | 110301 | 5500 | 2817 | 5573 | 2599 | 5497 | 77,9 | 267 | 75 | 39 | | | | | | | |
| 2000 | Vestas | 1380 | Bäcken,Erikstad | C9a | 90/105 | 110301 | 5500 | 3040 | 6320 | 2925 | 6161 | 78,5 | 291 | 79 | 12 | | | | | | | |
| 2000 | Enercon | 1381 | Rodovälén 4,Vemhån | E17a | 82/98 | 100608 | 6000 | 4237 | 6116 | 2923 | 5434 | 90,5 | 417 | 94 | 20 | | | | | | | |
| 2000 | Enercon | 1382 | Rodovälén 5,Vemhån | E17a | 82/98 | 100608 | 6000 | 4415 | 6171 | 3213 | 5663 | 90,4 | 487 | 95 | 6 | | | | | | | |
| 2000 | Enercon | 1383 | Rodovälén 6,Vemhån | E17a | 82/98 | 100608 | 6000 | 4439 | 6080 | 3125 | 5776 | 90,2 | 445 | 96 | 1 | | | | | | | |
| 2000 | Vestas | 1387 | Långberget 1,Arbrå | G15f | 90/105 | 110201 | 5670 | 3603 | 6198 | 3122 | 6138 | 90,7 | 408 | 77 | 44 | | | | | | | |
| 2000 | Vestas | 1388 | Långberget 2,Arbrå | G15c | 90/105 | 110201 | 5670 | 3226 | 5372 | 2793 | 5355 | 88,8 | 389 | 81 | 18 | | | | | | | |
| 2000 | Vestas | 1389 | Långberget 3,Arbrå | G15f | 90/105 | 110201 | 5670 | 3620 | 5320 | 2789 | 5403 | 84,8 | 392 | 80 | 22 | | | | | | | |
| 2000 | Enercon | 1390 | Söderbodane 2,Söderboda | C9g | 82/108 | 110107 | 4750 | 5130 | 5109 | 2093 | 4576 | 97,5 | 239 | 96 | 0 | 1 | | | | | | |
| 2000 | Vestas | 1395 | Herrberga 1,Mjölby | F8d | 90/105 | 110228 | 5200 | 3512 | 5594 | 2369 | 5020 | 98,9 | 267 | 77 | 14 | | | | | | | |
| 2000 | Vestas | 1396 | Herrberga 2,Mjölby | F8d | 90/105 | 110228 | 5200 | 3374 | 5485 | 2309 | 4931 | 99 | 252 | 75 | 9 | | | | | | | |
| 2000 | Vestas | 1397 | Herrberga 3,Mjölby | F8d | 90/105 | 110228 | 5200 | 3353 | 5447 | 2234 | 4823 | 98 | 256 | 76 | 6 | | | | | | | |
| 2000 | Vestas | 1398 | OVA Vind 3,Lundsbrunn | D8g | 90/90 | 101118 | 5000 | 3585 | 5741 | 2345 | 5197 | 94,3 | 290 | 79 | 4 | | | | | | | |
| 2000 | Vestas | 1399 | PRA A01,Lilla Edet | B8c | 90/105 | 110301 | 5726 | 4823 | 6252 | 2794 | 6053 | 95,9 | 316 | 80 | 47 | | | | | | | |
| 2000 | Vestas | 1400 | PRA A02,Lilla Edet | B8c | 90/105 | 110301 | 5726 | 4427 | 5688 | 2627 | 5479 | 95,7 | 305 | 84 | 8 | | | | | | | |
| 2000 | Vestas | 1401 | PRA A03,Lilla Edet | B8c | 90/105 | 110301 | 5726 | 4477 | 5918 | 2691 | 5688 | 96,2 | 292 | 78 | 58 | | | | | | | |
| 2000 | Vestas | 1402 | Björka 1,Motala | F8g | 90/105 | 110201 | 5100 | 4709 | 6837 | 2894 | 6249 | 97,5 | 339 | 76 | 23 | | | | | | | |
| 2000 | Vestas | 1403 | Björka 2,Motala | F8g | 90/105 | 110201 | 5100 | 4549 | 6749 | 2750 | 6059 | 97,7 | 284 | 72 | 63 | | | | | | | |
| 2000 | Enercon | 1405 | Lejdeberget 2,Bokenäset | B8d | 82/78 | 110413 | 5400 | 4119 | 6116 | 2598 | 5754 | 96 | 289 | 95 | 10 | | | | | | | |
| 2000 | Enercon | 1406 | Lejdeberget 3,Bokenäset | B8d | 82/78 | 110416 | 5400 | 3774 | 5391 | 2393 | 5214 | 96,2 | 273 | 96 | 3 | | | | | | | |
| 2000 | Enercon | 1410 | Brostorp 1,Snogeröd | D2g | 82/98 | 100301 | 5500 | 5229 | 5602 | 2369 | 4959 | 97,9 | 296 | 96 | 3 | | | | | | | |
| 2000 | Enercon | 1411 | Ryd-Rönnerum 1,Ryd | G4i | 82/78 | 110513 | 5200 | 2220 | 4272 | 1965 | 4035 | 89,2 | 281 | 95 | 8 | | | | | | | |
| 2000 | Enercon | 1412 | Ryd-Rönnerum 2,Ryd | G4i | 82/78 | 110513 | 5200 | 2069 | 4081 | 1925 | 3870 | 89,8 | 246 | 95 | 7 | | | | | | | |
| 2000 | Enercon | 1413 | Ryd-Rönnerum 3,Ryd | G4i | 82/78 | 110513 | 5200 | 2249 | 4201 | 1885 | 3847 | 89,8 | 258 | 96 | 0 | | | | | | | |
| 2000 | Enercon | 1414 | Ryd-Rönnerum 4,Ryd | G4i | 82/78 | 110513 | 5200 | 2091 | 4060 | 1823 | 3755 | 88,7 | 250 | 96 | 0 | | | | | | | |
| 2000 | Enercon | 1415 | Ryd-Rönnerum 5,Ryd | G4i | 82/78 | 110513 | 5200 | 2317 | 4294 | 1886 | 3845 | 88,2 | 253 | 96 | 0 | | | | | | | |
| 2000 | Vestas | 1416 | Stor-Rotliden A-01,Stor-Rotl | I21e | 90/95 | 100817 | 5725 | 5962 | 4506 | 2524 | 4273 | 96,1 | 353 | 0 | | | | | | | | |
| 2000 | Vestas | 1417 | Stor-Rotliden A-02,Stor-Rotl | I21e | 90/95 | 100817 | 5725 | 6101 | 4444 | 2455 | 4171 | 96,6 | 326 | 0 | | | | | | | | |
| 2000 | Vestas | 1422 | Stor-Rotliden A-07,Stor-Rotl | I21e | 90/95 | 100923 | 5725 | 7130 | 5227 | 2677 | 4764 | 95,2 | 213 | 0 | | | | | | | | |
| 2000 | Vestas | 1423 | Stor-Rotliden A-08,Stor-Rotl | I21e | 90/95 | 100928 | 5725 | 6075 | 4521 | 2350 | 4123 | 96,4 | 273 | 0 | | | | | | | | |
| 2000 | Vestas | 1424 | Stor-Rotliden A-09,Stor-Rotl | I21e | 90/95 | 100923 | 5725 | 6799 | 4960 | 2726 | 4622 | 95,7 | 305 | 0 | | | | | | | | |
| 2000 | Vestas | 1425 | Stor-Rotliden A-10,Stor-Rotl | I21e | 90/95 | 100923 | 5725 | 6752 | 4731 | 2743 | 4635 | 96,5 | 330 | 0 | | | | | | | | |
| 2000 | Vestas | 1426 | Stor-Rotliden A-11,Stor-Rotl | I21e | | | | | | | | | | | | | | | | | | |

| Ny * | Effekt (kW) | | Fabrikat | Nr Anläggning | Placering | D/H | I drift | Ber MWh | 2011 MWh | 2012 MWh | 2013 MWh | 12mån MWh | 12mån % | Månad MWh | Tid % | Hindertid (tim) | | | | | |
|------|-------------|------|------------------------------|---------------|-----------|--------|---------|---------|----------|----------|----------|-----------|---------|-----------|-------|-----------------|-------|-----|-----|----|-----|
| | Hög | Låg | | | | | | | | | | | | | | Benämning, Ort | Karta | (m) | AHT | MS | YNS |
| 2000 | Enercon | 1469 | Långjum 1,Långjum | C8c | 82/98 | 110401 | 4800 | 1858 | 5439 | 2250 | 4994 | 95,9 | 270 | 93 | 2 | | | | | | |
| 2000 | Enercon | 1470 | Långjum 2,Långjum | C8c | 82/98 | 110401 | 4800 | 1847 | 5327 | 2178 | 4813 | 96,8 | 262 | 92 | 9 | | | | | | |
| 2000 | Enercon | 1471 | Långjum 3,Långjum | C8c | 82/98 | 110401 | 4800 | 1745 | 5214 | 2230 | 4808 | 96,2 | 262 | 93 | 2 | | | | | | |
| 2000 | Enercon | 1475 | Lörby-Ysande 8,Lörby | E3e | 82/98 | 110501 | 5000 | 2129 | 5163 | 2448 | 4813 | 98,4 | 290 | 96 | 18 | | | | | | |
| 2000 | Enercon | 1476 | Lörby-Ysande 9,Lörby | E3e | 82/98 | 110501 | 5000 | 2067 | 4947 | 2378 | 4608 | 98,5 | 264 | 94 | 18 | | | | | | |
| 2000 | Enercon | 1477 | Lörby-Ysande 10,Lörby | E3e | 82/98 | 110501 | 5000 | 2119 | 5071 | 2464 | 4727 | 98,7 | 276 | 96 | 18 | | | | | | |
| 2000 | Vestas | 1478 | Halmstadgården 1,Halmsta | C3b | 90/80 | 110702 | 1990 | 6012 | 2698 | 5576 | 92,5 | 371 | 88 | 13 | | | | | | | |
| 2000 | Vestas | 1479 | Halmstadgården 2,Halmsta | C3b | 90/80 | 110702 | 1896 | 5642 | 2538 | 5188 | 93,3 | 340 | 87 | 10 | | | | | | | |
| 2000 | Vestas | 1480 | Halmstadgården 3,Halmsta | C3b | 90/80 | 110702 | 1880 | 5551 | 2496 | 5062 | 92,2 | 345 | 87 | 29 | | | | | | | |
| 2000 | Vestas | 1481 | Oberga Alf,Oberga | E7f | 90/105 | 110930 | 5000 | 1114 | 4841 | 2098 | 4379 | 99 | 239 | 78 | 0 | | | | | | |
| 2000 | Vestas | 1482 | Oberga Lena,Oberga | E7f | 90/105 | 110930 | 5000 | 1018 | 4927 | 2058 | 4437 | 99,1 | 232 | 76 | 1 | | | | | | |
| 2000 | Vestas | 1483 | Betäsberget 1,Backe | G20f | 90/105 | 110909 | 1586 | 4688 | 2235 | 4229 | 84,2 | 367 | 83 | 67 | | | | | | | |
| 2000 | Vestas | 1484 | Betäsberget 2,Backe | G20f | 90/105 | 110909 | 1381 | 4304 | 2071 | 3845 | 83,5 | 345 | 82 | 68 | | | | | | | |
| 2000 | Vestas | 1485 | Hyringa 1,Hyringa | C8e | 90/95 | 110824 | 2204 | 5171 | 2308 | 4908 | 90,4 | 267 | 79 | 173 | | | | | | | |
| 2000 | Vestas | 1486 | Hyringa 2,Hyringa | C8e | 90/95 | 110824 | 2311 | 5341 | 2358 | 5083 | 94,5 | 269 | 79 | 173 | | | | | | | |
| 2000 | Vestas | 1487 | Östra Sallerup 1,Östra Salle | D2h | 90/80 | 110704 | 5400 | 1218 | 5955 | 2832 | 5520 | 85,9 | 364 | 91 | 7 | | | | | | |
| 2000 | Vestas | 1488 | Östra Sallerup 2,Östra Salle | D2h | 90/80 | 110704 | 5400 | 1289 | 6070 | 2742 | 5539 | 85,9 | 358 | 90 | 10 | | | | | | |
| 2000 | Vestas | 1489 | Östra Sallerup 3,Östra Salle | D2h | 90/80 | 110704 | 5400 | 1359 | 6160 | 2870 | 5724 | 85,5 | 362 | 90 | 21 | | | | | | |
| 2000 | Enercon | 1490 | Horshaga 1,Skara | D8d | 82/108 | 110801 | 5000 | 1204 | 5157 | 2188 | 4750 | 98,4 | 253 | 94 | 6 | | | | | | |
| 2000 | Enercon | 1491 | Horshaga 2,Skara | D8d | 82/108 | 110801 | 5000 | 1211 | 5157 | 2175 | 4745 | 97,7 | 249 | 90 | 36 | | | | | | |
| 2000 | Enercon | 1513 | Lejesta Kraft, verk 5,Skarhu | C2i | 82/85 | 091101 | 5000 | 1174 | 5120 | 2445 | 4845 | 99 | 277 | 96 | 0 | | | | | | |
| 2000 | Enercon | 1514 | Blåshult 6,Skarhult | C2i | 82/85 | 091101 | 5000 | 1196 | 5085 | 2324 | 4685 | 97 | 268 | 96 | 0 | | | | | | |
| 2000 | Enercon | 1515 | Frees & Frick, verk 7,Skarh | C2i | 82/85 | 091101 | 5000 | 1226 | 5102 | 2433 | 4892 | 97,3 | 234 | 80 | 121 | | | | | | |
| 2000 | Enercon | 1516 | Blåshult 8,Skarhult | C2i | 82/85 | 091101 | 5000 | 1150 | 5653 | 2636 | 5330 | 98,6 | 297 | 96 | 0 | | | | | | |
| 2000 | Vestas | 1517 | STE A01,Orrefors | F4i | 90/125 | 110801 | 5531 | 2086 | 5922 | 2741 | 5367 | 98,6 | 328 | 88 | 2 | | | | | | |
| 2000 | Vestas | 1518 | STE A02,Orrefors | F4i | 90/125 | 110801 | 5531 | 2085 | 5775 | 2730 | 5340 | 95,7 | 329 | 88 | 2 | | | | | | |
| 2000 | Vestas | 1519 | STE A03,Orrefors | F4i | 90/125 | 110801 | 5531 | 2232 | 5972 | 2730 | 5468 | 98,8 | 329 | 86 | 15 | | | | | | |
| 2000 | Vestas | 1520 | STE A04,Orrefors | F4i | 90/125 | 110801 | 5531 | 2624 | 6341 | 2883 | 5807 | 98,8 | 356 | 87 | 19 | | | | | | |
| 2000 | Vestas | 1521 | STE A05,Orrefors | F4i | 90/125 | 110901 | 5531 | 2808 | 6357 | 2823 | 5739 | 99 | 349 | 87 | 6 | | | | | | |
| 2000 | Vestas | 1522 | STE A06,Orrefors | F4i | 90/125 | 110901 | 5531 | 2798 | 6343 | 2761 | 5645 | 98,8 | 357 | 88 | 2 | | | | | | |
| 2000 | Vestas | 1523 | STE A07,Orrefors | F5c | 90/125 | 110901 | 5531 | 2412 | 6112 | 2666 | 5440 | 99 | 339 | 86 | 11 | | | | | | |
| 2000 | Vestas | 1524 | STE A08,Orrefors | F5c | 90/125 | 110901 | 5531 | 2487 | 5926 | 2621 | 5310 | 99,3 | 310 | 84 | 6 | | | | | | |
| 2000 | Vestas | 1525 | STE A09,Orrefors | F5c | 90/125 | 110901 | 5531 | 2525 | 6164 | 2698 | 5459 | 99,3 | 324 | 86 | 3 | | | | | | |
| 2000 | Vestas | 1526 | STE A10,Orrefors | F5c | 90/125 | 110901 | 5531 | 2110 | 5685 | 2612 | 5186 | 98,2 | 312 | 87 | 7 | | | | | | |
| 2000 | Vestas | 1547 | Södervidinge 1 Nordväst,Sö | C2h | 90/80 | 111101 | 5600 | 790 | 6165 | 3052 | 5991 | 89,3 | 391 | 89 | 12 | | | | | | |
| 2000 | Vestas | 1548 | Södervidinge 2 Mitt,Södervi | C2h | 90/80 | 111101 | 5600 | 823 | 5952 | 3017 | 5881 | 89,1 | 384 | 88 | 10 | | | | | | |
| 2000 | Vestas | 1549 | Södervidinge 3 Sydöst,Söd | C2h | 90/80 | 111101 | 5600 | 831 | 6110 | 3109 | 6025 | 88,6 | 388 | 88 | 18 | | | | | | |
| 2000 | Vestas | 1553 | Sängsjön 4,Torvsele | H21e | 90/105 | 111030 | 5500 | 691 | 5436 | 2941 | 5309 | 91,5 | 388 | 85 | 218 | | | | | | |
| 2000 | Vestas | 1554 | Räpplinge, Svingan 2,Räppl | H5a | 90/80 | 111030 | 5200 | 847 | 5332 | 2353 | 4768 | 86,9 | 289 | 84 | 17 | | | | | | |
| 2000 | Vestas | 1555 | Räpplinge 3,Räpplinge | H5a | 90/80 | 111030 | 5200 | 784 | 5272 | 2303 | 4759 | 87,7 | 287 | 85 | 17 | | | | | | |
| 2000 | Vestas | 1556 | Räpplinge 4,Räpplinge | H5a | 90/80 | 111030 | 5200 | 700 | 5334 | 2420 | 4888 | 87,7 | 312 | 84 | 17 | | | | | | |
| 2000 | Enercon | 1559 | Ollebacken, Hällingarna 2,O | F20a | 82/98 | 111201 | 5280 | 5475 | 2715 | 4966 | 97,9 | 382 | 94 | 5 | | | | | | | |
| 2000 | Enercon | 1560 | Ollebacken, Hällingarna 3,O | F20a | 82/98 | 111201 | 5280 | 6138 | 3080 | 5688 | 98,5 | 436 | 93 | 16 | | | | | | | |
| 2000 | Enercon | 1561 | Ollebacken, Hällingarna 4,O | F20a | 82/98 | 111201 | 5280 | 5399 | 2685 | 4896 | 97 | 374 | 91 | 22 | | | | | | | |
| 2000 | Enercon | 1562 | Ollebacken, Hällingarna 5,O | F20a | 82/98 | 111201 | 5280 | 5485 | 2755 | 5018 | 98,3 | 387 | 95 | 0 | | | | | | | |
| 2000 | Enercon | 1563 | Ollebacken, Hällingarna 6,O | F20a | 82/98 | 111201 | 5280 | 5700 | 2920 | 5291 | 98,3 | 413 | 95 | 0 | | | | | | | |
| 2000 | Enercon | 1564 | Ollebacken, Hällingarna 7,O | F20a | 82/98 | 111201 | 5280 | 5655 | 2939 | 5255 | 97,4 | 423 | 95 | 5 | | | | | | | |
| 2000 | Vestas | 1581 | Medhamra 1,Medhamra | F8g | 90/95 | 101001 | | 6523 | 4038 | 2141 | 5045 | 97,4 | | | | | | | | | |
| 2000 | Vestas | 1582 | Medhamra 2,Medhamra | F8g | 90/95 | 100101 | | 6683 | 4234 | 2169 | 5233 | 97,7 | | | | | | | | | |
| 2000 | Vestas | 1583 | Mariédamm 1,Norra Björnfa | F9d | 90/95 | 091216 | | 5537 | 3891 | 2029 | 4360 | 94,9 | 229 | 65 | 80 | | | | | | |
| 2000 | Vestas | 1584 | Mariédamm 2,Norra Björnfa | F9d | 90/95 | 091216 | | 5387 | 3984 | 1963 | 4220 | 94,9 | 227 | 66 | 79 | | | | | | |
| 2000 | Vestas | 1585 | Gummaråsen 1,Tvååker | B5f | 90/105 | 101201 | | 6528 | 5229 | 2851 | 6106 | 98,6 | 366 | 88 | 0 | | | | | | |
| 2000 | Vestas | 1586 | Gummaråsen 2,Tvååker | B5f | 90/105 | 101201 | | 5936 | 5103 | 2857 | 6022 | 95,7 | 363 | 87 | 6 | | | | | | |
| 2000 | Vestas | 1587 | Gummaråsen 3,Tvååker | B5f | 90/105 | 101201 | | 7086 | 6324 | 3181 | 6784 | 98,2 | 410 | 88 | 6 | | | | | | |
| 2000 | Vestas | 1588 | Gummaråsen 4,Tvååker | B5f | 90/105 | 101201 | | 6458 | 5179 | 2663 | 5935 | 97 | 382 | 87 | 1 | | | | | | |
| 2000 | Vestas | 1589 | Gummaråsen 5,Tvååker | B5f | 90/105 | 101201 | | 6981 | 6160 | 3313 | 7222 | 98,7 | 454 | 90 | 0 | | | | | | |
| 2000 | Vestas | 1590 | Gislorp,Gislorp | F8h | 90/95 | 100101 | | 5670 | 3572 | 2272 | 4764 | 98,5 | 286 | 78 | 6 | | | | | | |
| 2000 | Vestas | 1591 | Stavhälla 1,Stavhälla | G10a | 90/105 | 111101 | | 1253 | 5432 | 2362 | 5247 | 98 | 289 | 78 | 1 | | | | | | |
| 2000 | Enercon | 1592 | Glysbyn,Glysbyn | C8g | 82/108 | 110420 | | | 5686 | 2804 | 6052 | 97,6 | 287 | 91 | 12 | | | | | | |
| 2000 | Enercon | 1593 | Brålanda Torp 1,Brålanda | B9c | 82/108 | 110906 | | | 4998 | 2455 | 5231 | 86,2 | 260 | 93 | 15 | | | | | | |
| 2000 | Enercon | 1594 | Brålanda Torp 2,Brålanda | C9a | 82/108 | 110906 | | | 4954 | 2466 | 5262 | 86 | 261 | 93 | 14 | | | | | | |
| 2000 | Enercon | 1595 | Bolstad Prästgård 1,Bolstad | C9a | 82/108 | 110927 | | | 5484 | 2700 | 5859 | 96,9 | 266 | 90 | 39 | | | | | | |
| 2000 | Enercon | 1596 | Bolstad Prästgård 2,Bolstad | C9a | 82/108 | 110927 | | | 5538 | 2755 | 5941 | 96,8 | 285 | 93 | 31 | | | | | | |
| 2000 | Vestas | 1599 | SKA A01,Svedala | C2c | 90/80 | 111215 | 5742 | | 4101 | 2500 | 5197 | 96,2 | 370 | 85 | 26 | | | | | | |
| 2000 | Vestas | 1600 | SKA A02,Svedala | C2c | 90/80 | 111215 | 5742 | | 3771 | 2366 | 4820 | 98,9 | 362 | 88 | 0 | | | | | | |
| 2000 | Vestas | 1601 | SKA A03,Svedala | C2c | 90/80 | 111215 | 5742 | | 4216 | 2646 | 5417 | 97,5 | 377 | 89 | 0 | | | | | | |
| 2000 | Vestas | 1602 | SKA A04,Svedala | C2b | 90/80 | 111215 | 5742 | | 4816 | 3063 | 6198 | 98,6 | 431 | 89 | 0 | | | | | | |
| 2000 | Vestas | 1603 | SKA A05,Svedala | C2b | 90/80 | 111215 | 5742 | | 4369 | 2950 | 5952 | 99,2 | 392 | 88 | 0 | | | | | | |
| 2000 | Enercon | 1605 | Stora Lund 2,Götene | D8g | 82/108 | 100801 | 5000 | | 4499 | 2314 | 5159 | 99,4 | 281 | 95 | 0 | | | | | | |
| 2000 | Enercon | 1606 | Kollbogården 2,Götene | D8g | 82/108 | 100802 | 5000 | | 4406 | 2255 | 5035 | 98,5 | 283 | 95 | 0 | | | | | | |
| 2000 | Vestas | 1609 | Karstorp 1,Karstorp | D8d | 90/105 | 120401 | | | 3137 | 2059 | 4593 | 98,9 | 256 | 78 | 9 | | | | | | |
| 2000 | Vestas | 1610 | Karstorp 2,Karstorp | D8d | 90/105 | 120401 | | </ | | | | | | | | | | | | | |

| Ny * | Effekt (kW) | | Fabrikat | Nr Anläggning | Placering | D/H I drift | Ber MWh | 2011 MWh | 2012 MWh | 2013 MWh | 12mån MWh | 12mån % | Månad MWh | Tid % | Hindertid (tim) | | | | | |
|------|-------------|---------------------------------|----------|---------------|-----------|-------------|---------|----------|----------|----------|-----------|---------|-----------|-------|-----------------|----|-----|-----|----|-----|
| | Hög | Låg | | | | | | | | | | | | | AHT | MS | YNS | OVS | PU | OPS |
| 2000 | Vestas | 1631 Väby 1,Väby | C5d | 90/105 | 120131 | 5400 | | 6536 | 2903 | 6421 | 98,3 | 383 | 90 | 3 | | | | | | |
| 2000 | Vestas | 1632 Väby 2,Väby | C5d | 90/105 | 120131 | 5400 | | 4945 | 2616 | 5503 | 96,3 | 348 | 89 | 5 | | | | | | |
| 2000 | Vestas | 1633 Väby 3,Väby | C5d | 90/105 | 120131 | 5400 | | 4856 | 2488 | 5270 | 96,7 | 300 | 85 | 12 | | | | | | |
| 2000 | Vestas | 1634 Väby 4,Väby | C5d | 90/105 | 120131 | 5400 | | 5161 | 2336 | 4860 | 96,7 | 274 | 87 | 4 | | | | | | |
| 2000 | Vestas | 1635 Väby 5,Väby | C5d | 90/105 | 120131 | 5400 | | 4519 | 2189 | 4624 | 98,2 | 248 | 85 | 1 | | | | | | |
| 2000 | Vestas | 1636 Väby 6,Väby | C5d | 90/105 | 120131 | 5400 | | 4775 | 2466 | 5257 | 98,1 | 302 | 87 | 3 | | | | | | |
| 2000 | Enercon | 1640 Stora Istad 6,Stora Istad | H5a | 82/78 | 111109 | 5500 | 854 | 5721 | 2604 | 5373 | 97,8 | 307 | 95 | 15 | | | | | | |
| 2000 | Enercon | 1641 Stora Istad 8,Stora Istad | H5a | 82/78 | 111109 | 5500 | 634 | 5870 | 2698 | 5536 | 97,1 | 311 | 93 | 24 | | | | | | |
| 2000 | Vestas | 1644 Frotorps Ingrid,Frotorp | E9i | 90/105 | 120701 | 5000 | | 2076 | 2049 | 4125 | 89,7 | 240 | 78 | 5 | | | | | | |
| 2000 | Vestas | 1645 Frotorps Wera,Frotorp | E9i | 90/105 | 120701 | 5000 | | 1906 | 1962 | 3868 | 93,5 | 225 | 78 | 5 | | | | | | |
| 2000 | Vestas | 1646 Frotorps Ylva,Frotorp | E9i | 90/105 | 120701 | 5000 | | 2090 | 2139 | 4230 | 89,6 | 248 | 78 | 5 | | | | | | |
| 2000 | Enercon | 1647 Egby 6,Egby | H5a | 82/76 | 120628 | 3000 | | 1142 | 1669 | 2811 | 89,9 | 253 | 93 | 20 | | | | | | |
| 2000 | Enercon | 1648 Egby 7,Egby | H5a | 82/76 | 120628 | 3000 | | 1157 | 2071 | 3228 | 96,8 | 227 | 95 | 3 | | | | | | |
| 2000 | Enercon | 1649 Egby 8,Egby | H5a | 82/76 | 120628 | 3000 | | 1107 | 2083 | 3190 | 96,3 | 221 | 93 | 21 | | | | | | |
| 2000 | Enercon | 1650 Egby 9,Egby | H5a | 82/76 | 120628 | 3000 | | 1015 | 2099 | 3115 | 95,2 | 235 | 96 | 4 | | | | | | |
| 2000 | Enercon | 1651 Egby 10,Egby | H5a | 82/76 | 120628 | 3000 | | 751 | 2104 | 2856 | 94,3 | 267 | 96 | 2 | | | | | | |
| 2000 | Enercon | 1652 Hästhalla 1,Hästhalla | C8f | 82/78 | 120416 | 4600 | | 1825 | 1939 | 3764 | 98,1 | 242 | 91 | 16 | | | | | | |
| 2000 | Enercon | 1653 Hästhalla 2,Hästhalla | C8f | 82/78 | 120414 | 4600 | | 1674 | 1885 | 3559 | 98,4 | 218 | 92 | 12 | | | | | | |
| 2000 | Enercon | 1654 Hästhalla 3,Hästhalla | C8f | 82/78 | 120516 | 4600 | | 1739 | 1865 | 3603 | 97,8 | 221 | 92 | 14 | | | | | | |
| 2000 | Enercon | 1655 Hästhalla 4,Hästhalla | C8f | 82/78 | 120416 | 4600 | | 1819 | 1969 | 3788 | 97,6 | 238 | 92 | 16 | | | | | | |
| 2000 | Vestas | 1656 Sturugns III,Lärbro | J7c | 90/105 | 120615 | 6100 | | 2385 | 2789 | 5174 | 87,5 | 368 | 86 | 94 | | | | | | |
| 2000 | Vestas | 1657 Furulund 1,Nymö | E3a | 90/95 | 120706 | 5200 | | 1977 | 2648 | 4625 | 98,9 | 322 | 88 | 6 | | | | | | |
| 2000 | Vestas | 1658 Furulund 2,Nymö | E3a | 90/95 | 120706 | 5200 | | 2060 | 2732 | 4791 | 99,4 | 323 | 88 | 5 | | | | | | |
| 2000 | Enercon | 1659 Sölve 1,Sölvedal | E3b | 82/98 | 120601 | 4950 | | 1997 | 2634 | 4630 | 99 | 302 | 96 | 12 | | | | | | |
| 2000 | Enercon | 1660 Sölve 2,Sölvedal | E3b | 82/98 | 120601 | 4950 | | 2001 | 2627 | 4628 | 98,9 | 310 | 95 | 17 | | | | | | |
| 2000 | Vestas | 1661 Hackeryd Vind 1,Västerlösa | F8e | 90/105 | 120801 | 4800 | | 1489 | 2207 | 3696 | 99,2 | | | | | | | | | |
| 2000 | Vestas | 1662 Hackeryd Vind 2,Västerlösa | F8e | 90/105 | 120801 | 4800 | | 1460 | 2116 | 3576 | 98,4 | | | | | | | | | |
| 2000 | Vestas | 1663 Hackeryd Vind 3,Västerlösa | F8e | 90/105 | 120801 | 4800 | | 1462 | 2198 | 3660 | 99,3 | | | | | | | | | |
| 2000 | Vestas | 1664 Vävinge Vind 1,Skänninge | F8d | 90/80 | 120801 | 4450 | | 1176 | 2173 | 3349 | 97,8 | 287 | 80 | 6 | | | | | | |
| 2000 | Vestas | 1665 Vävinge Vind 2,Skänninge | F8d | 90/80 | 120801 | 4450 | | 1259 | 2211 | 3470 | 98,6 | 289 | 80 | 2 | | | | | | |
| 2000 | Vestas | 1666 Hakarp 1,Hakarp | F3d | 90/105 | 120831 | 5000 | | 892 | 2364 | 3256 | 92,1 | 319 | 89 | 11 | | | | | | |
| 2000 | Vestas | 1667 Hakarp 2,Hakarp | F3d | 90/105 | 120831 | 5000 | | 1260 | 2387 | 3647 | 94,3 | 307 | 89 | 12 | | | | | | |
| 2000 | Vestas | 1668 Hakarp 3,Hakarp | F3d | 90/105 | 120831 | 5000 | | 1096 | 2136 | 3233 | 90,1 | 294 | 88 | 10 | | | | | | |
| 2000 | Vestas | 1669 Hakarp 4,Hakarp | F3d | 90/105 | 120831 | 5000 | | 1210 | 2322 | 3533 | 92,1 | 294 | 85 | 45 | | | | | | |
| 2000 | Vestas | 1670 Hakarp 5,Hakarp | F3g | 90/105 | 120831 | 5000 | | 1187 | 2189 | 3376 | 91,1 | 300 | 88 | 10 | | | | | | |
| 2000 | Vestas | 1671 Hakarp 6,Hakarp | F3d | 90/105 | 120831 | 5000 | | 1295 | 2393 | 3688 | 93,6 | 307 | 89 | 11 | | | | | | |
| 2000 | Vestas | 1672 Hakarp 7,Hakarp | F3d | 90/105 | 120831 | 5000 | | 1277 | 2268 | 3545 | 93,7 | 304 | 89 | 10 | | | | | | |
| 2000 | Vestas | 1673 Hakarp 8,Hakarp | F3d | 90/105 | 120831 | 5000 | | 1251 | 2311 | 3562 | 93,9 | 296 | 88 | 10 | | | | | | |
| 2000 | Vestas | 1674 Tolvmanstegen 1,Tolvmans | A9i | 90/105 | 111125 | 5200 | | 1631 | 2343 | 3974 | 98,4 | 281 | 80 | 60 | | | | | | |
| 2000 | Vestas | 1675 Tolvmanstegen 2,Tolvmans | A9i | 90/105 | 111125 | 5200 | | 1859 | 2754 | 4613 | 98,2 | 330 | 82 | 60 | | | | | | |
| 2000 | Vestas | 1676 Tolvmanstegen 3,Tolvmans | A9i | 90/105 | 111130 | 5200 | | 1649 | 2358 | 4008 | 98 | 304 | 81 | 61 | | | | | | |
| 2000 | Vestas | 1677 Tolvmanstegen 4,Tolvmans | A9i | 90/105 | 111208 | 5200 | | 1639 | 2273 | 3912 | 98,4 | 301 | 80 | 54 | | | | | | |
| 2000 | Vestas | 1678 Tolvmanstegen 5,Tolvmans | A9i | 90/105 | 111130 | 5200 | | 1643 | 2344 | 3987 | 97,4 | 299 | 80 | 60 | | | | | | |
| 2000 | Vestas | 1679 Tolvmanstegen 6,Tolvmans | A9i | 90/105 | 111208 | 5200 | | 1797 | 2547 | 4344 | 98,2 | 311 | 82 | 55 | | | | | | |
| 2000 | Vestas | 1680 Tolvmanstegen 7,Tolvmans | A9i | 90/105 | 111208 | 5200 | | 1895 | 2798 | 4693 | 97,9 | 334 | 82 | 68 | | | | | | |
| 2000 | Vestas | 1681 Tolvmanstegen 8,Tolvmans | A9i | 90/105 | 111130 | 5200 | | 1603 | 2273 | 3876 | 98,2 | 288 | 80 | 57 | | | | | | |
| 2000 | Vestas | 1682 Tolvmanstegen 9,Tolvmans | A9i | 90/105 | 111125 | 5200 | | 1653 | 2455 | 4108 | 98,1 | 287 | 81 | 59 | | | | | | |
| 2000 | Vestas | 1683 Tolvmanstegen 10,Tolvman | A9i | 90/105 | 111215 | 5200 | | 1804 | 2650 | 4454 | 96,7 | 313 | 82 | 56 | | | | | | |
| 2000 | Vestas | 1684 Tolvmanstegen 11,Tolvman | A9i | 90/105 | 111216 | 5200 | | 1707 | 2588 | 4295 | 97,8 | 310 | 82 | 54 | | | | | | |
| 2000 | Vestas | 1685 Tolvmanstegen 12,Tolvman | A9i | 90/105 | 120315 | 5200 | | 1557 | 2373 | 3930 | 97,5 | 274 | 81 | 55 | | | | | | |
| 2000 | Vestas | 1686 Tolvmanstegen 13,Tolvman | A9i | 90/105 | 120315 | 5200 | | 1771 | 2484 | 4254 | 98,6 | 310 | 81 | 55 | | | | | | |
| 2000 | Vestas | 1687 Tolvmanstegen 14,Tolvman | A9i | 90/105 | 120315 | 5200 | | 1711 | 2495 | 4206 | 98,4 | 297 | 81 | 56 | | | | | | |
| 2000 | Vestas | 1688 Tolvmanstegen 15,Tolvman | A9i | 90/105 | 120315 | 5200 | | 1694 | 2519 | 4214 | 98,1 | 306 | 82 | 55 | | | | | | |
| 2000 | Vestas | 1689 Tolvmanstegen 16,Tolvman | A9i | 90/105 | 120315 | 5200 | | 1716 | 2595 | 4311 | 98,3 | 304 | 81 | 56 | | | | | | |
| 2000 | Vestas | 1690 Tolvmanstegen 17,Tolvman | A9i | 90/105 | 120410 | 5200 | | 1724 | 2652 | 4375 | 98 | 311 | 82 | 54 | | | | | | |
| 2000 | Vestas | 1691 Tolvmanstegen 19,Tolvman | A9i | 90/105 | 120416 | 5200 | | 1770 | 2598 | 4368 | 97,7 | 307 | 82 | 57 | | | | | | |
| 2000 | Vestas | 1692 Tolvmanstegen 21,Tolvman | A9i | 90/105 | 120423 | 5200 | | 1796 | 2620 | 4416 | 98,2 | 320 | 82 | 56 | | | | | | |
| 2000 | Vestas | 1693 Tolvmanstegen 22,Tolvman | A9i | 90/105 | 120410 | 5200 | | 1877 | 2754 | 4631 | 98,5 | 323 | 82 | 55 | | | | | | |
| 2000 | Vestas | 1694 Tolvmanstegen 23,Tolvman | A9i | 90/105 | 120410 | 5200 | | 1806 | 2635 | 4442 | 98,2 | 312 | 82 | 56 | | | | | | |
| 2000 | Vestas | 1695 Tolvmanstegen 24,Tolvman | A9i | 90/105 | 120322 | 5200 | | 1746 | 2480 | 4226 | 98,3 | 317 | 81 | 55 | | | | | | |
| 2000 | Enercon | 1696 Lyby 3,Lyby | D2g | 82/78 | 110831 | 5200 | | 1270 | 2460 | 3730 | 99 | 286 | 96 | 8 | | | | | | |
| 2000 | Enercon | 1700 Hörby Gärd,Hörby gård | E3b | 82/98 | 120630 | | | 2609 | 2847 | 5368 | 98,2 | 349 | 98 | 0 | | | | | | |
| 2000 | Vestas | 1701 Härjevad 1,Lidköping | C8f | 90/95 | 120701 | 5500 | | 1271 | 2673 | 3944 | 80,9 | 307 | 80 | 16 | | | | | | |
| 2000 | Vestas | 1702 Härjevad 2,Lidköping | C8f | 90/95 | 120701 | 5500 | | 1261 | 2681 | 3942 | 81,2 | 309 | 81 | 11 | | | | | | |
| 2000 | Gamesa | 1703 Dal 1, Anna Margareta,Fjär | B6f | 90/100 | 111214 | 5400 | | 4433 | 2602 | 5830 | 100 | 355 | 71 | 0 | | | | | | |
| 2000 | Gamesa | 1704 Dal 2, Maria,Fjärås | B6f | 90/100 | 111214 | 5400 | | 3578 | 2498 | 4956 | 100 | 318 | 69 | 0 | | | | | | |
| 2000 | Gamesa | 1705 Dal 3, Adelé,Fjärås | B6f | 90/100 | 111222 | 5400 | | 4008 | 2358 | 5253 | 100 | 318 | 71 | 0 | | | | | | |
| 2000 | Gamesa | 1706 Dal 4, Estelle,Fjärås | B6f | 90/100 | 111229 | 5400 | | 4143 | 2672 | 5776 | 100 | 266 | 71 | 0 | | | | | | |
| 2000 | Gamesa | 1707 Fåleberg 1,Fåleberg | D9f | 90/100 | 111201 | 5200 | | 858 | 1753 | 2610 | 100 | 211 | 71 | 0 | | | | | | |
| 2000 | Gamesa | 1708 Fåleberg 2,Fåleberg | D9f | 90/100 | 111201 | 5200 | | 881 | 1913 | 2795 | 100 | 226 | 71 | 0 | | | | | | |
| 2000 | Gamesa | 1709 Fåleberg 3,Fåleberg | D9f | 90/100 | 111201 | 5200 | | 936 | 1801 | 2737 | 100 | 234 | 71 | 0 | | | | | | |
| 2000 | Vestas | 1710 Nyvallsåsen 1,Bergsjö | H16g | 90/105 | 121110 | 5900 | | 487 | 3305 | 3792 | 90,8 | 455 | 86 | 7 | | | | | | |
| 2000 | Vestas | 1711 Nyvallsåsen 2,Bergsjö | H16g | 90/105 | 121110 | 5900 | | 408 | 3169 | 3577 | 91,3 | 421 | 84 | 10 | | | | | | |
| 2000 | Vestas | 1717 Skallmeja-Elvingsgården,Sk | C8f | 90/95 | 121026 | 5400 | | 552 | 2599 | 3151 | 99,2 | 302 | 80 | 6 | | | | | | |
| 2000 | Vestas | 1718 Brännåsen 1, NV,Bergsjö | H16d | 90/105 | 121010 | 6631 | | 508 | 3107 | 3615 | 97,6 | 411 | | | | | | | | |

| Ny * | Effekt (kW) | | Fabrikat | Nr Anläggning Benämning, Ort | Placering Karta | D/H (m) | I drift | Ber MWh | 2011 MWh | 2012 MWh | 2013 MWh | 12mån MWh | 12mån % | Månad MWh | Tid % | Hindertid (tim) | | | | | | | |
|------|-------------|-----|----------|---------------------------------|--------------------|------------|---------|------------|-------------|-------------|-------------|--------------|------------|--------------|----------|-----------------|----|-----|-----|----|-----|----|--|
| | Hög | Låg | | | | | | | | | | | | | | AHT | MS | YNS | OYS | PU | OPS | TF | |
| 3000 | | | Vestas | 1501 Näsudden Väst 10,Näs | I5f | 90/90 | 111001 | 2672 | 7103 | 3003 | 6493 | 6493 | 97,9 | 354 | 82 | 10 | | | | | | | |
| 3000 | | | Vestas | 1502 Näsudden Väst 11,Näs | I5f | 90/90 | 111001 | 2665 | 6991 | 3117 | 6472 | 6472 | 97,8 | 360 | 83 | 2 | | | | | | | |
| 3000 | | | Vestas | 1503 Näsudden Väst 12,Näs | I5f | 90/90 | 111001 | 2656 | 7351 | 3142 | 6671 | 6671 | 97,1 | 366 | 86 | 12 | | | | | | | |
| 3000 | | | Vestas | 1504 Stugyl 1,Näs | I5f | 90/90 | 110901 | 3936 | 8788 | 3400 | 7961 | 7961 | 95,6 | 486 | 84 | 9 | | | | | | | |
| 3000 | | | Vestas | 1505 Stugyl 2,Näs | I5f | 90/90 | 110901 | 3806 | 8840 | 3271 | 7727 | 7727 | 94,6 | 428 | 78 | 55 | | | | | | | |
| 3000 | | | Vestas | 1506 Stugyl 3,Näs | I5f | 90/90 | 110901 | 3588 | 8858 | 3513 | 7944 | 7944 | 95,3 | 509 | 85 | 13 | | | | | | | |
| 3000 | | | Vestas | 1507 Stugyl 4,Näs | I5f | 90/90 | 110901 | 3936 | 8841 | 3672 | 8122 | 8122 | 95,7 | 495 | 82 | 27 | | | | | | | |
| 3000 | | | Vestas | 1508 Stugyl 5,Näs | I5f | 90/90 | 110901 | 2868 | 9515 | 3778 | 8670 | 8670 | 96,2 | 541 | 86 | 2 | | | | | | | |
| 3000 | | | Vestas | 1509 Stugyl 6,Näs | I5f | 90/90 | 110901 | 3675 | 8036 | 3300 | 7323 | 7323 | 95 | 425 | 84 | 2 | | | | | | | |
| 3000 | | | Vestas | 1510 Stugyl 7,Näs | I5f | 90/90 | 110901 | 3583 | 7815 | 3272 | 7067 | 7067 | 95,9 | 431 | 84 | 1 | | | | | | | |
| 3000 | | | Vestas | 1511 Stugyl 8,Näs | I5f | 90/90 | 110901 | 3710 | 8383 | 3614 | 7653 | 7653 | 96,1 | 488 | 83 | 14 | | | | | | | |
| 3000 | | | Vestas | 1512 Stugyl 9,Näs | I5f | 90/90 | 110901 | 4109 | 9132 | 3779 | 8522 | 8522 | 94,6 | 501 | 84 | 17 | | | | | | | |
| 3000 | | | WinWind | 1597 VP Vänern GG7,Vänern | D10d | 90/88 | 091120 | 9000 | | 7748 | 3664 | 8140 | 100 | 335 | | | | | | | | | |
| 3000 | | | WinWind | 1598 VP Vänern GG8,Vänern | D10d | 90/88 | 091120 | 9000 | | 5705 | 3764 | 7014 | 100 | 477 | | | | | | | | | |
| 3050 | | | Enercon | 1779 Middagsberget Verk 1,Skål | E17g | 101/99 | 121122 | 8300 | | | 706 | 706 | 93 | 166 | 19 | 557 | | | | | | | |
| 3050 | | | Enercon | 1780 Middagsberget Verk 2,Skål | E17g | 101/99 | 121122 | 8300 | | | 997 | 997 | 99,7 | 503 | 93 | 2 | | | | | | | |
| 3050 | | | Enercon | 1781 Middagsberget Verk 3,Skål | E17g | 101/99 | 121122 | 8300 | | | 866 | 866 | 98,7 | 442 | 91 | 13 | | | | | | | |

Karta över verkens placering

