

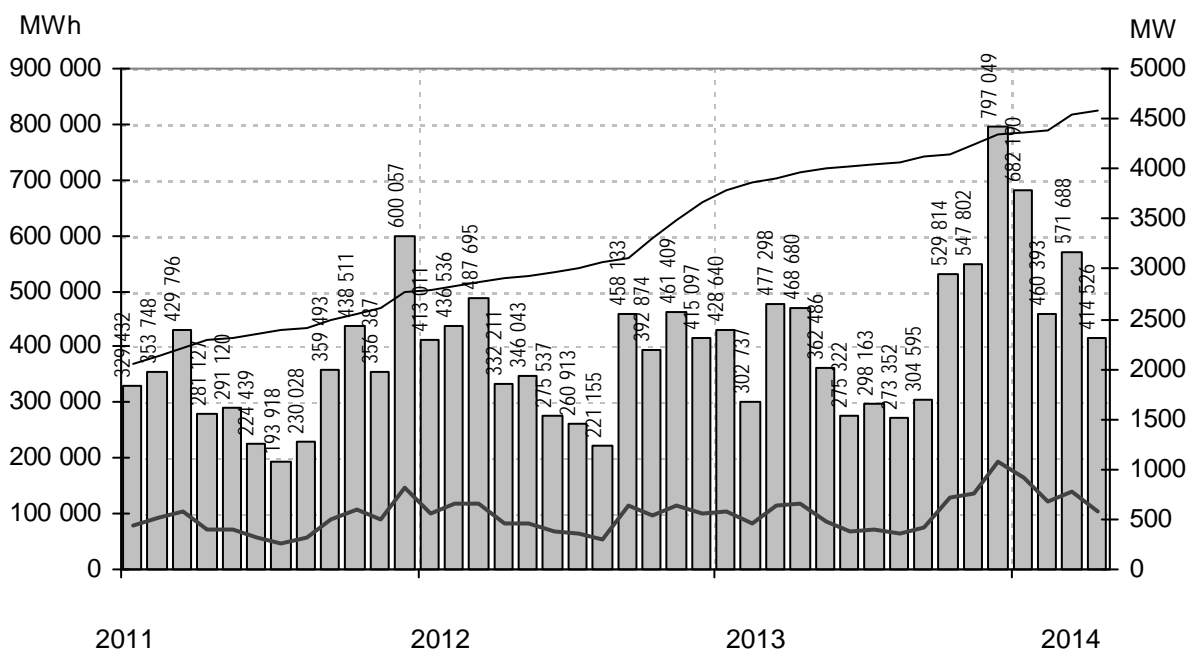
Vindkraftverk

Större än 50 kW

april 2014

Internetadress: <http://www.vindstat.nu>

Vindproducerad el från registrerade verk



Staplarna visar producerad energi per månad i MWh, linjerna visar installerad effekt respektive månadens medeleffekt i MW

Sammanfattning

| | | |
|---------------------------|-------|-----------|
| Totalt installerad effekt | (MW) | 4630 |
| Antal verk | (st) | 2733 |
| Rapporterade denna månad | (st) | 1438 |
| Elproduktion | | |
| 2012 | (MWh) | 4 500 613 |
| 2013 | (MWh) | 5 065 936 |
| 2014 | (MWh) | 2 128 796 |
| Rapporterat denna månad | (MWh) | 414 526 |
| Medeleffekt denna månad | (MW) | 576 |

Vindens energiinnehåll

| | |
|---|-------|
| Månaden jämfört med samma månad tidigare år | 124 % |
| Året hittills jämfört med samma period under tidigare år | 129 % |
| Senaste 12 månaderna jämfört med samma period under tidigare år | 111 % |

Förklaringar till tabellen på följande sidor

| | | | |
|-------|--|-----|-----------------------|
| Ber | Av ägaren lämnad uppgift på beräknad elproduktion | | |
| Årtal | Sammanlagd elproduktion under respektive år | | |
| 12mån | Elproduktion och tillgänglighet senaste 12 månaderna | | |
| Månad | Elproduktion under månaden | | |
| Tid | Andel av månaden som generatorm varit inkopplad på nät | | |
| * | Nytt verk | | |
| AHT | Avläst hindertid | | |
| MS | Mindre störning | PU | Planerat underhåll |
| YNS | Yttre nätstörning | ÖPS | Övrigt planerat stopp |
| ÖYS | Övrig yttre störning | TF | Tekniskt fel |

Ett projekt finansierat av Energimyndigheten

Sammanställningen gjord 2014-05-09

Ansvarig:
Nils-Erik Carlstedt Vindstat ABE-post: nilserik.carlstedt@vindstat.com
Telefon: 070 - 539 54 67

| Ny * | Effekt (kW) | | Fabrikat | Nr Anläggning | Placering | D/H I drift | Ber MWh | 2012 MWh | 2013 MWh | 2014 MWh | 12mån MWh | 12mån % | Månad MWh | Tid % | Hindertid (tim) | | | | | | | | |
|------|-------------|-----------|----------|-----------------------------|-----------|-------------|---------|----------|----------|----------|-----------|---------|-----------|-------|-----------------|-------|-----|-----|----|-----|-----|----|-----|
| | Hög | Låg | | | | | | | | | | | | | Benämning, Ort | Karta | (m) | AHT | MS | VNS | OVS | PU | OPS |
| 95 | 20 | Tellus | 37 | Södra Bäckebo,Ålem | G5c | 19/41 | 920225 | 110 | 56 | 59 | 25 | 62 | 99,8 | 5 | 65 | 0 | | | | | | | |
| 100 | | Vestas | 501 | Seglaberga I,Laholm | C4e | 20/24 | 880927 | 205 | 92 | 101 | 52 | 118 | 100 | 12 | 78 | 0 | | | | | | | |
| 150 | | WindWorld | 15 | Snaigsto,Näs | I5i | 28/31 | 900202 | 455 | 245 | 274 | 126 | 314 | 100 | 23 | 68 | E+04 | | | | | | | |
| 150 | | WindWorld | 16 | Tjautet,Näs | I5i | 28/31 | 900203 | 455 | | 94 | 108 | 198 | 100 | 23 | 70 | E+04 | | | | | | | |
| 150 | | WindWorld | 73 | Arendala,Lund | C2f | 27/40 | 930522 | 416 | 408 | 371 | 174 | 412 | 100 | 41 | 81 | E+04 | | | | | | | |
| 150 | | WindWorld | 107 | Stureholms gård,Ödåkra | C3d | 27/41 | 940801 | 380 | 325 | 268 | 139 | 318 | 100 | 23 | 64 | E+04 | | | | | | | |
| 150 | | WindWorld | 143 | Rödjans Gård,Bolstad | C9a | 27/41 | 950825 | 260 | 168 | 78 | | 16 | 100 | | | | | | | | | | |
| 150 | | WindWorld | 144 | Nygården 4:1,Nygården | C9a | 27/41 | 950927 | 260 | 206 | 71 | 105 | 177 | 58 | 19 | 59 | E+04 | | | | | | | |
| 225 | 50 | Vestas | 22 | Braheskolan,Visingsö | E7g | 27/30 | 901206 | 500 | 368 | 404 | 148 | 405 | 100 | 26 | 66 | 0 | | | | | | | |
| 225 | 50 | Vestas | 24 | Ölandstok,Grönhögen | G3i | 27/30 | 910710 | 580 | 480 | 484 | 195 | 501 | 99,6 | 38 | 89 | 0 | | | | | | | |
| 225 | 50 | Vestas | 25 | Solvåndan,Grönhögen | G3i | 27/30 | 910710 | 580 | 457 | 437 | 159 | 444 | 92,2 | 34 | 83 | 77 | | | | | | | |
| 225 | 50 | Vestas | 28 | Mårten,Grötlingbo | J5g | 27/30 | 911025 | 466 | 426 | 378 | 198 | 430 | 94,8 | 35 | 82 | 21 | | | | | | | |
| 225 | 50 | Vestas | 30 | Sjöbergs Säteri,Lugnås | D9b | 27/30 | 911111 | 400 | 280 | 263 | 125 | 302 | 99,6 | 21 | 64 | 0 | | | | | | | |
| 225 | 50 | Vestas | 33 | Tovsippan,Grönhögen | G3i | 27/30 | 911210 | 580 | 520 | 495 | 210 | 514 | 97,2 | 41 | 88 | 28 | | | | | | | |
| 225 | 50 | Vestas | 34 | Vitsippan,Grönhögen | G3i | 27/30 | 911210 | 580 | 448 | 393 | 201 | 507 | 97,7 | 37 | 90 | 4 | | | | | | | |
| 225 | 50 | Vestas | 54 | Elmer I,Mosås | F10a | 27/31 | 920626 | 280 | 205 | 203 | 83 | 219 | 92,7 | 19 | 61 | 1 | | | | | | | |
| 225 | 50 | Vestas | 56 | Albert,Kistinge | C4e | 27/32 | 920908 | 493 | 398 | 349 | 161 | 409 | 97,8 | 23 | 69 | 28 | | | | | | | |
| 225 | 50 | Vestas | 57 | Erik,Kistinge | C4e | 27/32 | 920908 | 493 | 369 | 323 | 150 | 380 | 99,7 | 22 | 66 | 2 | | | | | | | |
| 225 | 50 | Vestas | 63 | Bösarp,Bösarp | C1i | 27/25 | 921215 | 472 | 436 | 414 | 204 | 458 | 99,2 | 43 | 85 | 1 | | | | | | | |
| 225 | 50 | Vestas | 65 | August,Visingsö | E7g | 27/31 | 930107 | 480 | 349 | 320 | 129 | 336 | 84,6 | 27 | 69 | 3 | | | | | | | |
| 225 | 50 | Vestas | 68 | Kristinelund 1,Ventlinge | G3i | 27/31 | 930109 | 580 | 550 | 545 | 220 | 570 | 37 | 44 | 90 | 720 | | | | | | | |
| 225 | 50 | Vestas | 69 | Kristinelund 2,Ventlinge | G3i | 27/31 | 930109 | 580 | 533 | 509 | 222 | 539 | 37,8 | 42 | 90 | 720 | | | | | | | |
| 225 | 50 | Vestas | 70 | Kristinelund 3,Ventlinge | G3i | 27/31 | 930109 | 580 | 537 | 539 | 230 | 572 | 38,1 | 44 | 91 | 720 | | | | | | | |
| 225 | 50 | Vestas | 82 | Österlervind,Simris | E2a | 27/32 | 930923 | 480 | 491 | 502 | 188 | 470 | 98,1 | | | | | | | | | | |
| 225 | 50 | Vestas | 83 | Berta,Simris | E2a | 27/32 | 930923 | 480 | 499 | 501 | 177 | 455 | 96,7 | | | | | | | | | | |
| 225 | 50 | Vestas | 96 | Viktor,Simris | E2a | 27/32 | 940112 | 480 | 474 | 492 | 181 | 453 | 97,6 | | | | | | | | | | |
| 225 | 50 | Vestas | 97 | Almetorps Säteri,Lavad | C8e | 27/32 | 940202 | 320 | 212 | 211 | 89 | 236 | 99,7 | 17 | 64 | 0 | | | | | | | |
| 225 | 50 | Vestas | 100 | Gulsippa,Grönhögen | G3i | 27/30 | 940126 | 580 | 430 | 437 | 183 | 457 | 99,6 | 33 | 90 | 2 | | | | | | | |
| 225 | 50 | Vestas | 101 | Blåsippa,Grönhögen | G3i | 27/30 | 940126 | 580 | 493 | 481 | 182 | 487 | 97,7 | 33 | 87 | 32 | | | | | | | |
| 225 | 50 | Vestas | 106 | Kristinelund Nord,Ventlinge | G3i | 27/31 | 940718 | 600 | 455 | 476 | 227 | 564 | 38 | 43 | 90 | 720 | | | | | | | |
| 225 | 50 | Vestas | 109 | Lilla ELen,Tvååker | B5f | 27/31 | 940820 | 460 | 405 | 360 | 169 | 426 | 97,5 | 25 | 73 | 4 | | | | | | | |
| 225 | 50 | Vestas | 110 | Ei-Trendo,Tvååker | B5f | 27/31 | 940820 | 460 | 434 | 381 | 176 | 451 | 98,3 | 25 | 73 | 3 | | | | | | | |
| 225 | 50 | Vestas | 111 | Hällemöllan 1,Rönnäng | A7f | 29/32 | 941021 | 600 | 613 | 587 | 238 | 660 | 99,4 | 39 | 77 | 3 | | | | | | | |
| 225 | 50 | Vestas | 112 | Rosendal,Rosendal | B5f | 27/31 | 940930 | 500 | 430 | 389 | 172 | 450 | 98,8 | 26 | 79 | 8 | | | | | | | |
| 225 | 50 | Vestas | 113 | Elvira,Kistinge | C4e | 27/31 | 940623 | 384 | 356 | 303 | 151 | 369 | 97,5 | 22 | 67 | 0 | | | | | | | |
| 225 | 50 | Vestas | 116 | Sibylla af Ångholmen,Ångh | A7f | 29/31 | 941020 | 570 | 530 | 553 | 230 | 625 | 94,6 | 39 | 79 | 3 | | | | | | | |
| 225 | 50 | Vestas | 119 | Hägwards,Hall | J7e | 29/31 | 941215 | 410 | 396 | 287 | 126 | 287 | 58,8 | 17 | 0 | | | | | | | | 192 |
| 225 | 50 | Vestas | 120 | Vivi,Visingsö | E7g | 29/31 | 941228 | 530 | 492 | 483 | 191 | 504 | 99,5 | 32 | 66 | 5 | | | | | | | |
| 225 | 50 | Vestas | 121 | Hornbore,Hamburgsund | A9c | 29/31 | 941216 | 500 | 343 | 361 | 150 | 425 | 96,2 | 26 | 64 | 96 | | | | | | | |
| 225 | 50 | Vestas | 136 | Nuntorpskolan,Brålanda | B8i | 29/31 | 950824 | 325 | 19 | 202 | 105 | 251 | 92,8 | 21 | 56 | 0 | | | | | | | |
| 225 | 50 | Vestas | 141 | Elmer II,Mosås | F10a | 29/31 | 950912 | 320 | 222 | 229 | 98 | 255 | 99,4 | 21 | 56 | 1 | | | | | | | |
| 225 | 50 | Vestas | 142 | Stella af Rönnäng,Rönnäng | A7f | 29/31 | 950918 | 550 | 557 | 535 | 213 | 601 | 98,6 | 35 | 78 | 2 | | | | | | | |
| 225 | 50 | Vestas | 148 | Önaholms Gård 5,Tveta | C10b | 29/34 | 951108 | 417 | 333 | 365 | 192 | 465 | 92 | 29 | 62 | 1 | | | | | | | |
| 225 | 50 | Vestas | 178 | Zephyrus af Hof,Ålme stad | D7d | 29/30 | 960221 | 332 | 205 | 196 | 104 | 232 | 93,2 | 17 | 71 | 2 | | | | | | | |
| 225 | 50 | Vestas | 200 | Lunden,Gårdhem | B8c | 29/30 | 960701 | 330 | 152 | 234 | 102 | 250 | 97 | 17 | 46 | 108 | | | | | | | |
| 225 | 50 | Vestas | 215 | Kälvene,Kälvene | D7h | 29/31 | 960828 | 330 | 277 | 264 | 143 | 319 | 97,4 | 23 | 74 | 3 | | | | | | | |
| 225 | 50 | Vestas | 233 | Linnea,Grönhögen | G3i | 29/32 | 961108 | 570 | 507 | 499 | 204 | 522 | 99,7 | 36 | 88 | 1 | | | | | | | |
| 225 | 50 | Vestas | 234 | Gullvivan,Grönhögen | G3i | 29/32 | 961107 | 570 | 474 | 459 | 205 | 490 | 98,5 | 36 | 89 | 1 | | | | | | | |
| 225 | 50 | Vestas | 235 | Kristinelund 5,Ventlinge | G3i | 27/31 | 961106 | 600 | 609 | 608 | 256 | 643 | 37,9 | 48 | 91 | 720 | | | | | | | |
| 225 | 50 | Vestas | 241 | Månsunen,Gislöv | E2a | 29/32 | 970217 | 525 | 498 | 476 | 237 | 488 | 93,7 | 49 | 86 | 18 | | | | | | | |
| 225 | 50 | Vestas | 250 | Ingel 3,Östra Ingelstad | D2c | 29/32 | 971017 | 460 | 468 | 471 | 195 | 491 | 98,6 | 44 | 86 | 5 | | | | | | | |
| 225 | 50 | Vestas | 257 | Hällemöllan 2,Rönnäng | A7f | 29/32 | 971111 | 600 | 659 | 634 | 243 | 704 | 99,6 | 42 | 80 | 2 | | | | | | | |
| 225 | 50 | Vestas | 272 | Agrivind,Grötlingbo | J5g | 29/30 | 980110 | 580 | 443 | 385 | 216 | 461 | 99,1 | 36 | 81 | 19 | | | | | | | |
| 225 | 50 | Vestas | 368 | Ann-EL-i,Hängsdala | D7h | 29/30 | 990104 | 370 | 386 | 360 | 182 | 416 | 96,7 | 33 | 79 | 5 | | | | | | | |
| 225 | 50 | Vestas | 375 | Gesvinto, Skåls Vindk,Näs | I5f | 29/30 | 990508 | 620 | 565 | 514 | 232 | 589 | 98,4 | 36 | 87 | 0 | | | | | | | |
| 225 | 50 | Vestas | 502 | Seglaberga II,Laholm | C4e | 27/30 | 910118 | | 411 | 312 | 176 | 382 | 94,3 | 26 | 77 | 4 | | | | | | | |
| 225 | 50 | Vestas | 503 | Seglaberga III,Laholm | C4e | 27/30 | 920309 | | 378 | 305 | 166 | 360 | 86,9 | 25 | 76 | 0 | | | | | | | |
| 225 | 50 | Vestas | 517 | Värpinge Anna,Lund | C2e | 27/30 | 900201 | 500 | 327 | 273 | 149 | 320 | 96,7 | 33 | 79 | 0 | | | | | | | |
| 225 | 50 | Vestas | 518 | Värpinge Bella,Lund | C2e | 27/30 | 900201 | 500 | 111 | 286 | 145 | 331 | 97,6 | 29 | 72 | 0 | | | | | | | |
| 225 | 50 | Vestas | 522 | Bäckagård I,Tvååker | B5f | 27/30 | 911016 | 500 | 350 | 390 | 172 | 452 | 97,1 | 23 | 66 | 106 | | | | | | | |
| 225 | 50 | Vestas | 523 | Bäckagård II,Tvååker | B5f | 27/30 | 911016 | 500 | 442 | 373 | 169 | 434 | 97,8 | 24 | 76 | 5 | | | | | | | |
| 225 | 50 | Vestas | 524 | Bäckagård III,Tvååker | B5f | 27/30 | 911016 | 500 | 413 | 347 | 154 | 404 | 98,9 | 22 | 67 | 6 | | | | | | | |
| 225 | 50 | Vestas | 525 | Bäckagård IV,Tvååker | B5f | 27/30 | 911016 | 500 | 380 | 382 | 171 | 451 | 99,6 | 25 | 78 | 2 | | | | | | | |
| 225 | 50 | Vestas | 526 | Bäckagård V,Tvååker | B5f | 27/30 | 911016 | 500 | 414 | 362 | 164 | 422 | 95,7 | 24 | 74 | 1 | | | | | | | |
| 225 | 50 | Vestas | 527 | Bäckagård VI,Tvååker | B5f | 27/30 | 911016 | 500 | 428 | 344 | 166 | 403 | 92,7 | 24 | 76 | 2 | | | | | | | |
| 225 | 50 | Vestas | 528 | Bäckagård VII,Tvååker | B5f | 27/30 | 911016 | 500 | 418 | 372 | 165 | 433 | 99,7 | 23 | 76 | 3 | | | | | | | |
| 225 | 50 | Vestas | 541 | Slitevind I,Näs | I5f | 27/30 | 930120 | 600 | 531 | 476 | 208 | 537 | 99,7 | 31 | 87 | 3 | | | | | | | |
| 225 | 50 | Vestas | 544 | Hjärtholmen Set,Hjärtholme | B7a | 27/31 | 930105 | 550 | 536 | 502 | 213 | 575 | 98,6 | 30 | 78 | 3 | | | | | | | |
| 225 | 50 | Vestas | 545 | Hjärtholmen Abel,Hjärtholm | B7a | 27/31 | 930105 | 550 | 558 | 507 | 213 | 579 | 98 | 31 | 77 | 2 | | | | | | | |
| 225 | 50 | Vestas | 546 | Hjärtholmen Axel,Hjärtholm | B7a | 27/31 | 930616 | 550 | 463 | 490 | 207 | 558 | 95,1 | 30 | 77 | 19 | | | | | | | |
| 225 | 50 | Vestas | 569 | Ingel 1,Östra Ingelstad | D2c | 29/31 | 960320 | 460 | 470 | 467 | | | | | | | | | | | | | |

| Ny * | Effekt (kW) | | Fabrikat | Nr Anläggning | Placering | D/H I drift | Ber MWh | 2012 MWh | 2013 MWh | 2014 MWh | 12mån MWh | 12mån % | Månad MWh | Tid % | Hindertid (tim) | | | | | | | |
|------|-------------|-----|--------------------------------|---------------|-----------|-------------|---------|----------|----------|----------|-----------|---------|-----------|-------|-----------------|----|-----|-----|----|-----|----|--|
| | Hög | Låg | | | | | | | | | | | | | AHT | MS | YNS | OVS | PU | OPS | TF | |
| 500 | Vestas | 91 | Rehn Kraft I,Näs | I5f | 39/41 | 931221 | 1200 | 1067 | 978 | 479 | 1143 | 99 | 70 | 76 | 14 | | | | | | | |
| 500 | Vestas | 114 | Barsebäck III,Barsebäck | C2h | 39/40 | 941017 | 1150 | 1112 | 897 | 393 | 981 | 93,5 | 89 | 74 | 0 | | | | | | | |
| 500 | Vestas | 124 | Sophie Hogenäset,Sotenäs | A8f | 39/41 | 950131 | 1100 | 1009 | 863 | 450 | 1035 | 88,5 | 74 | 63 | 0 | | | | | | | |
| 500 | Vestas | 127 | Hogenäset, Ingeborg,Hoge | A8f | 39/39 | 950125 | 1100 | 1071 | 937 | 449 | 1126 | 93 | 74 | 64 | 0 | | | | | | | |
| 500 | Vestas | 128 | Sönnertorp 2,Sönnertorp | C4a | 39/41 | 950213 | 890 | 945 | 853 | 420 | 969 | 97,6 | 68 | 72 | 0 | | | | | | | |
| 500 | Vestas | 131 | Sönnertorp 1,V:a Karup | C4a | 39/40 | 950331 | 890 | 970 | 906 | 448 | 1030 | 99,4 | 72 | 72 | 0 | | | | | | | |
| 500 | Enercon | 147 | Ruuthsbo I,Ruuthsbo | D1h | 40/42 | 951020 | 1500 | 378 | 1156 | 509 | 1215 | 92,7 | 114 | 88 | 26 | | | | | | | |
| 500 | WindWorld | 162 | Lucia af Boholmen,Skoghall | D10d | 37/41 | 951219 | 800 | 556 | 582 | 246 | 686 | 96,4 | 40 | 59 | 7 | | | | | | | |
| 500 | WindWorld | 172 | Si-Vind,Lysekil | A8f | 37/40 | 951221 | 950 | 747 | 730 | 340 | 887 | 99,6 | 57 | 79 | 4 | | | | | | | |
| 500 | Enercon | 181 | Slitevind XIII,Larsbo Glemm | D1i | 40/50 | 960513 | 1300 | 1307 | 1157 | 544 | 1268 | 95,4 | 140 | 91 | 21 | | | | | | | |
| 500 | Enercon | 182 | Slitevind XIV,Larsbo Glem | D1i | 40/50 | 960513 | 1300 | 1292 | 1132 | 125 | 741 | 70,5 | 106 | 82 | 70 | | | | | | | |
| 500 | Enercon | 183 | Slitevind XVI,Ryngne N | D2a | 40/50 | 960515 | 1300 | 856 | 1086 | 523 | 1191 | 85,9 | 126 | 93 | 0 | | | | | | | |
| 500 | Vestas | 186 | Åstorp 1,Åstorp | C3e | 39/40 | 960216 | 860 | 766 | 676 | 220 | 640 | 98,3 | | | | | | | | | | |
| 500 | WindWorld | 195 | Ärröd 220001,Ärröd | D2h | 37/41 | 960523 | 710 | 675 | 430 | 290 | 526 | 82,3 | 56 | 58 | 212 | | | | | | | |
| 500 | Enercon | 209 | Österlervind II,Simris | E2a | 40/42 | 960825 | 1380 | 1424 | 1041 | | 431 | 97,6 | | | | | | | | | | |
| 500 | WindWorld | 216 | Legevind,Legeved | E3a | 37/41 | 960904 | 600 | 608 | 551 | 281 | 623 | 99,4 | 41 | 66 | 5 | | | | | | | |
| 500 | WindWorld | 218 | Trollenäs,Trollenäs | C2i | 37/41 | 960829 | | 758 | 660 | 340 | 728 | 99,3 | 73 | 80 | 4 | | | | | | | |
| 500 | Enercon | 229 | Hog 1,Stenungsund | B7g | 40/42 | 961003 | 1050 | 713 | 719 | 273 | 778 | 86,5 | 63 | 87 | 12 | | | | | | | |
| 500 | Enercon | 230 | Hog 2,Stenungsund | B7g | 40/42 | 961003 | 1050 | 922 | 916 | 396 | 1040 | 96,4 | 74 | 91 | 3 | | | | | | | |
| 500 | Enercon | 236 | Slitevind XVII,Eriksfält N Ör | D1i | 40/50 | 961211 | 1300 | 1167 | 1419 | 658 | 1507 | 96,7 | 152 | 96 | 0 | | | | | | | |
| 500 | Enercon | 237 | Slitevind XVIII,Eriksfält S Ör | D1i | 40/50 | 961211 | 1300 | 1226 | 1301 | 508 | 1280 | 91,4 | 136 | 94 | 4 | | | | | | | |
| 500 | Vestas | 239 | Åstorp 2,Åstorp | C3e | 39/40 | 970204 | 950 | 824 | 713 | 239 | 687 | 92 | | | | | | | | | | |
| 500 | Vestas | 247 | Lovisa,Örby | C3a | 39/40 | 970825 | 950 | 786 | 738 | 384 | 867 | 98,9 | 64 | 67 | 1 | | | | | | | |
| 500 | Enercon | 263 | Windbyggarna 1,Lärbro | J7b | 40/65 | 971220 | 1100 | 594 | 511 | 314 | 581 | 64,3 | 53 | 88 | 32 | | | | | | | |
| 500 | Enercon | 264 | Isak,Klinterhamn | I6c | 40/50 | 971219 | 1300 | 937 | 729 | 118 | 576 | 62,4 | 70 | 88 | 7 | | | | | | | |
| 500 | Enercon | 267 | Ryftes Kristina,Fole | J6g | 40/65 | 971218 | 1200 | 825 | 847 | 340 | 884 | 64,4 | 65 | 89 | 32 | | | | | | | |
| 500 | Enercon | 269 | Kyrkebys 1,Hangvar | J7b | 40/65 | 971220 | 1200 | 869 | 808 | 252 | 780 | 98,1 | 65 | 92 | 0 | | | | | | | |
| 500 | Enercon | 270 | Kyrkebys 2,Hangvar | J7b | 40/65 | 971220 | 1200 | 821 | 850 | 285 | 848 | 96,9 | 51 | 80 | 68 | | | | | | | |
| 500 | Vestas | 291 | Täppeshusen 1,Höganäs | C3d | 39/40 | 980402 | 1050 | 877 | 676 | 371 | 777 | 97 | 59 | 67 | 0 | | | | | | | |
| 500 | Vestas | 292 | Täppeshusen 2,Höganäs | C3d | 39/40 | 980402 | 1050 | 909 | 719 | 370 | 815 | 98,7 | 57 | 66 | 0 | | | | | | | |
| 500 | Enercon | 314 | St. Herrestad I,St. Herresta | D2b | 40/65 | 980712 | 1420 | 1374 | 1071 | 400 | 981 | 87,8 | 98 | 92 | 21 | | | | | | | |
| 500 | Enercon | 317 | St. Herrestad II,St. Herresta | D2b | 40/65 | 980712 | 1420 | 1349 | 1146 | 520 | 1194 | 90,2 | 131 | 95 | 3 | | | | | | | |
| 500 | Enercon | 354 | Kadesjö I,Trunnerup 9:4 | D2a | 40/65 | 981119 | 1400 | 1238 | 1237 | 571 | 1326 | 98,5 | 144 | 91 | 23 | | | | | | | |
| 500 | Enercon | 355 | Kadesjö II,Trunnerup 9:4 | D2a | 40/65 | 981119 | 1400 | 1146 | 1052 | 422 | 1024 | 89,2 | 135 | 94 | 2 | | | | | | | |
| 500 | Enercon | 356 | Marieholm I,Reslöv 11:3 | C2i | 40/65 | 981201 | 1300 | 1103 | 1120 | 548 | 1231 | 96,8 | 111 | 88 | 42 | | | | | | | |
| 500 | Enercon | 357 | Månslunda I,Månslunda | D2f | 40/65 | 981127 | 1350 | 1019 | 1028 | 510 | 1109 | 94,4 | 120 | 94 | 4 | | | | | | | |
| 500 | Enercon | 358 | Rydsgård I,Ville 61:8 | D2a | 40/65 | 981118 | 1400 | 1150 | 1049 | 479 | 1090 | 93 | 133 | 93 | 4 | | | | | | | |
| 500 | Enercon | 359 | Rydsgård II,Ville 61:8 | D2a | 40/65 | 981120 | 1400 | 1234 | 895 | 217 | 693 | 80,3 | 128 | 93 | 2 | | | | | | | |
| 500 | Enercon | 362 | Marieholm II,Reslöv 11:3 | C2i | 40/65 | 981202 | 1300 | 1063 | 944 | 484 | 1123 | 96,5 | 95 | 92 | 8 | | | | | | | |
| 500 | Enercon | 380 | Gunn-EI,Köpinge Gärd | C4e | 40/65 | 990115 | 1200 | 832 | 944 | 502 | 1131 | 89,2 | 81 | 87 | 0 | | | | | | | |
| 500 | Vestas | 504 | Seglberga IV,L:Tjärby | C4e | 39/40 | 930701 | 1000 | 662 | 632 | 303 | 699 | 87,8 | 52 | 66 | 1 | | | | | | | |
| 500 | Vestas | 519 | Värpinge Clara,Lund | C2e | 39/40 | 960711 | 1050 | 812 | 503 | 346 | 618 | 64 | 68 | 62 | 62 | | | | | | | |
| 500 | Vestas | 543 | Slitevind III,Näs | I5f | 39/41 | 930209 | 1350 | 1188 | 1027 | 500 | 1199 | 98,3 | 75 | 79 | 1 | | | | | | | |
| 500 | Vestas | 550 | Vindudd IV,Gröttingbo | J5g | 39/41 | 941115 | 1050 | 1018 | 921 | 491 | 1056 | 97,9 | 85 | 80 | 0 | | | | | | | |
| 500 | Vestas | 551 | Vindudd V,Gröttingbo | J5g | 39/41 | 941115 | 1050 | 966 | 896 | 480 | 1023 | 97,4 | 82 | 71 | 6 | | | | | | | |
| 500 | WindWorld | 559 | Annelöv I,Landskrona | C2h | 37/41 | 951220 | | 908 | 817 | 427 | 929 | 99,5 | 86 | 79 | 3 | | | | | | | |
| 500 | WindWorld | 560 | Annelöv II,Landskrona | C2h | 37/41 | 960307 | | 855 | 710 | 428 | 916 | 99,5 | 85 | 84 | 3 | | | | | | | |
| 500 | Enercon | 565 | Slitevind IX,Smöjen | J7c | 40/50 | 951222 | 1300 | 919 | 946 | 486 | 1061 | 90 | 80 | 92 | 1 | | | | | | | |
| 500 | Enercon | 566 | Slitevind X,Smöjen | J7c | 40/50 | 951215 | 1300 | 918 | 935 | 505 | 1115 | 91,7 | 66 | 81 | 83 | | | | | | | |
| 500 | Enercon | 568 | Slitevind XII,Furillen | J7c | 40/50 | 951220 | 1400 | 1369 | 1230 | 613 | 1375 | 97,6 | 93 | 93 | 2 | | | | | | | |
| 500 | WindWorld | 571 | Kullamöllan,Nyhamnsläge | B3i | 37/41 | 960620 | | 1017 | 842 | 406 | 942 | 99,5 | 66 | 75 | 3 | | | | | | | |
| 500 | WindWorld | 572 | Kullavind,Nyhamnsläge | B3i | 37/41 | 960620 | | 1166 | 953 | 427 | 1036 | 99,6 | 73 | 75 | 3 | | | | | | | |
| 500 | Enercon | 592 | Humlekärr 1,Humlekärr | A8f | 40/42 | 961024 | 1300 | 1167 | 1034 | 495 | 1243 | 93,9 | 87 | 93 | 0 | | | | | | | |
| 500 | Enercon | 593 | Humlekärr 2,Humlekärr | A8f | 40/42 | 961024 | 1300 | 844 | 970 | 477 | 1269 | 92,5 | 88 | 93 | 0 | | | | | | | |
| 500 | WindWorld | 698 | Blyger II,Jämjö | H4g | 37/42 | 021213 | 550 | 643 | 594 | 225 | 594 | 99,4 | 29 | 48 | 4 | | | | | | | |
| 550 | WindWorld | 661 | Bockstigen 1,Offshore | I5f | 37/40 | 980301 | 1575 | 817 | 955 | 321 | 877 | 62,7 | 107 | 92 | 5 | | | | | | | |
| 550 | WindWorld | 662 | Bockstigen 2,Offshore | I5f | 37/40 | 980301 | 1575 | 918 | 602 | 475 | 759 | 58,1 | 105 | 93 | 0 | | | | | | | |
| 550 | WindWorld | 663 | Bockstigen 3,Offshore | I5f | 37/40 | 980301 | 1575 | 1434 | 1261 | 550 | 1358 | 75 | 109 | 92 | 0 | | | | | | | |
| 550 | WindWorld | 664 | Bockstigen 4,Offshore | I5f | 37/40 | 980301 | 1575 | 948 | 877 | 516 | 958 | 75,9 | 102 | 87 | 50 | | | | | | | |
| 550 | WindWorld | 665 | Bockstigen 5,Offshore | I5f | 37/40 | 980301 | 1575 | 1352 | 1309 | 490 | 1364 | 77,7 | 106 | 88 | 27 | | | | | | | |
| 600 | Vestas | 146 | Bromöllan 1,Bromö | D9e | 42/40 | 951019 | 1100 | 904 | 842 | 317 | 929 | 98 | 59 | 46 | 13 | | | | | | | |
| 600 | Vestas | 159 | Hansamöllan,Värpinge | C2e | 42/41 | 951205 | 1150 | 941 | 888 | 459 | 1002 | 97,6 | 87 | 68 | 0 | | | | | | | |
| 600 | Vestas | 180 | Vårdkasberget,Härnösand | I17g | 44/40 | 960501 | 1100 | 854 | 1079 | 337 | 1231 | 99,9 | 76 | 58 | 8 | | | | | | | |
| 600 | Vestas | 188 | Hjärtholmen Görel,Hjärthol | B7a | 44/40 | 960502 | 1450 | 1022 | 1292 | 634 | 1676 | 96,5 | 89 | 68 | 3 | | | | | | | |
| 600 | Vestas | 189 | Hjärtholmen Boel,Hjärtholm | B7a | 44/40 | 960502 | 1450 | 800 | 1253 | | 836 | | | | | | | | | | | |
| 600 | Vestas | 191 | Risholmen Elin,Risholmen | B7a | 44/40 | 960506 | 1450 | 768 | 1253 | | 836 | | | | | | | | | | | |
| 600 | Vestas | 192 | Risholmen Elida,Risholmen | B7a | 44/40 | 960506 | 1450 | 734 | 1253 | | 836 | | | | | | | | | | | |
| 600 | Vestas | 193 | Risholmen Eivind,Risholme | B7a | 44/40 | 960503 | 1450 | 731 | 1253 | | 836 | | | | | | | | | | | |
| 600 | Vestas | 194 | Lövstaviken 8,Falkenberg | B5c | 42/40 | 960601 | 1500 | 1250 | 1112 | 501 | 1317 | 38 | 65 | 53 | 720 | | | | | | | |
| 600 | Vestas | 204 | Häberg 1,Flo | C8d | 44/50 | 960726 | 938 | 754 | 853 | 336 | 887 | 99,6 | 67 | 55 | 1 | | | | | | | |
| 600 | Vestas | 210 | BEA 8,När | J5h | 44/50 | 960917 | 1300 | 1101 | 990 | 517 | 1153 | 99,2 | 82 | 73 | 0 | | | | | | | |
| 600 | Vestas | 211 | Burgvind, Rigges1,När | J5h | 44/50 | 960920 | 1300 | 1038 | 968 | 518 | 1133 | 94,6 | 82 | 73 | 5 | | | | | | | |
| 600 | Vestas | 222 | Ry | | | | | | | | | | | | | | | | | | | |

| Ny * | Effekt (kW) | | Fabrikat | Nr Anläggning | Placering | D/H I drift | Ber MWh | 2012 MWh | 2013 MWh | 2014 MWh | 12mån MWh | 12mån % | Månad MWh | Tid % | Hindertid (tim) | | | | | | | | |
|------|-------------|-----|----------|---------------------------------|-----------|-------------|---------|----------|----------|----------|-----------|---------|-----------|-------|-----------------|-------|-----|-----|----|-----|-----|-----|-----|
| | Hög | Låg | | | | | | | | | | | | | Benämning, Ort | Karta | (m) | AHT | MS | YNS | OVS | PU | OPS |
| 600 | Enercon | | | 754 Bure 3,Bureå | L22d | 44/65 | 031001 | 1333 | 839 | 910 | 279 | 912 | 94 | 66 | 80 | 10 | | | | | | | |
| 600 | Enercon | | | 765 Målajord,Målajord | E5f | 44/65 | 040611 | 1030 | 884 | 857 | 382 | 956 | 99,2 | 77 | 86 | 1 | | | | | | | |
| 600 | Enercon | | | 771 Valterslund 1,Valterslunds | D2c | 44/65 | 040630 | 1600 | 1660 | 1532 | 717 | 1636 | 94,6 | 148 | 83 | 72 | | | | | | | |
| 600 | Enercon | | | 772 Valterslund 2,Valterslunds | D2c | 44/65 | 040702 | 1600 | 1683 | 1591 | 638 | 1612 | 94,6 | 152 | 84 | 72 | | | | | | | |
| 600 | 120 Bonus | | | 243 Olsvenne 1,Näs | I5f | 44/50 | 970303 | 1500 | 1293 | 994 | 121 | 758 | 70,3 | | | | | | | | | | |
| 600 | 120 Bonus | | | 251 Skärbo 1,Tanumshede | A9f | 44/50 | 971118 | 1170 | 943 | 817 | 413 | 994 | 91,3 | 73 | 84 | 0 | | | | | | | |
| 600 | 120 Bonus | | | 252 Skärbo 2,Tanumshede | A9f | 44/50 | 971101 | 1170 | 872 | 759 | 366 | 881 | 84,4 | 69 | 84 | 0 | | | | | | | |
| 600 | 120 Bonus | | | 253 Skärbo 3,Tanumshede | A9f | 44/50 | 971114 | 1170 | 973 | 991 | 423 | 1141 | 94,4 | 75 | 84 | 0 | | | | | | | |
| 600 | 120 Bonus | | | 254 Skärbo 4,Tanumshede | A9f | 44/50 | 971114 | 1170 | 778 | 876 | 389 | 1042 | 96,2 | 66 | 82 | 0 | | | | | | | |
| 600 | 120 Bonus | | | 255 Skärbo 5,Tanumshede | A9f | 44/50 | 971114 | 1170 | 938 | 915 | 388 | 1067 | 96,3 | 66 | 82 | 0 | | | | | | | |
| 600 | 120 Bonus | | | 256 Skärbo 6,Tanumshede | A9f | 44/50 | 971113 | 1170 | 733 | 792 | 343 | 937 | 95,8 | 59 | 81 | 0 | | | | | | | |
| 600 | 120 Bonus | | | 262 Viking Vind,Löddeköpinge 2 | C2h | 44/41 | 971003 | 1040 | 1091 | 1036 | 509 | 1165 | 99,9 | 105 | 88 | 0 | | | | | | | |
| 600 | 120 Bonus | | | 274 Monica af Olseröd,Olseröd | D2i | 44/40 | 971201 | 1160 | 1027 | 906 | 229 | 753 | 73,7 | 1 | 3 | 685 | | | | | | | |
| 600 | 120 Bonus | | | 275 Magnhild af Magnelund,Eld | C4e | 44/30 | 971201 | 1100 | 1072 | 914 | 459 | 1081 | 93,4 | 68 | 85 | 0 | | | | | | | |
| 600 | 120 Bonus | | | 333 Eva,Mellböda | H5h | 44/45 | 980801 | 1200 | 927 | 954 | 441 | 998 | 95,9 | 73 | 84 | 3 | | | | | | | |
| 600 | 120 Bonus | | | 334 Maria,Mellböda | H5h | 44/45 | 980801 | 1200 | 1016 | 1040 | 452 | 1062 | 98,4 | 77 | 84 | 6 | | | | | | | |
| 600 | 120 Bonus | | | 335 Susanna,Mellböda | H5h | 44/45 | 980801 | 1200 | 1137 | 1105 | 508 | 1156 | 98,1 | 84 | 86 | 2 | | | | | | | |
| 600 | 120 Bonus | | | 336 Rebecka Slitevind,Mellböda | H5h | 44/45 | 980801 | 1200 | 972 | 650 | 0 | 279 | 47,2 | 0 | 1 | 710 | | | | | | | |
| 600 | 120 Bonus | | | 337 Anna Slitevind,Mellböda | H5h | 44/45 | 980801 | 1200 | 1099 | 1090 | 416 | 1063 | 91,1 | 61 | 66 | 159 | | | | | | | |
| 600 | 120 Bonus | | | 339 Biegg-å!mai,Suorva | I28g | 44/40 | 981013 | 1000 | 1170 | 1274 | 504 | 1378 | 83,7 | 131 | 77 | 110 | | | | | | | |
| 600 | 120 Bonus | | | 341 Holmsund Vindkraftstn,Hol | K20e | 44/50 | 980617 | 1100 | 1025 | 1101 | 426 | 1201 | 93,2 | 78 | 85 | 1 | | | | | | | |
| 600 | 120 Bonus | | | 347 Rodovålen 2,Rodovålen | E17a | 44/40 | 981007 | 1200 | 1008 | 1132 | 133 | 907 | 92,5 | | | | | | | | | | |
| 600 | 120 Bonus | | | 378 Solvik 3,Maglarp | C1h | 44/50 | 990525 | 1500 | 1792 | 1578 | 442 | 1477 | 96,5 | | | | | | | | | | |
| 600 | 120 Bonus | | | 379 Solvik 4,Maglarp | C1h | 44/50 | 990526 | 1500 | 1697 | 1582 | 394 | 1403 | 93,2 | | | | | | | | | | |
| 660 | Vestas | | | 313 Havsvind,Mellbystrand | C4b | 47/50 | 980626 | 1400 | 1251 | 1031 | 406 | 1121 | 94 | | | | | | | | | | |
| 660 | Vestas | | | 338 Burgar,Habbingbo | I5i | 47/45 | 981012 | 1720 | 1808 | 1689 | 672 | 1866 | 97,4 | 120 | 70 | 30 | | | | | | | |
| 660 | Vestas | | | 382 Slitevind XX,Smöjen | J7c | 47/55 | 990819 | 1877 | 1330 | 1266 | 651 | 1476 | 99,6 | 100 | 62 | 0 | | | | | | | |
| 660 | Vestas | | | 383 Slitevind XXI,Smöjen | J7c | 47/55 | 990819 | 1900 | 1467 | 1364 | 695 | 1578 | 99,5 | 105 | 64 | 0 | | | | | | | |
| 660 | Vestas | | | 384 Slitevind XXII,Smöjen | J7c | 47/55 | 990819 | 1956 | 1523 | 1262 | 609 | 1416 | 99 | 99 | 63 | 0 | | | | | | | |
| 660 | Vestas | | | 385 Slitevind XXIII,Smöjen | J7c | 47/55 | 990819 | 1996 | 1708 | 1597 | 791 | 1825 | 99,4 | 123 | 70 | 0 | | | | | | | |
| 660 | Vestas | | | 393 Kärrets Gärd,Kärrets Gärd | B5f | 47/55 | 991012 | 1250 | 1160 | 1001 | 519 | 1200 | 99,1 | 73 | 56 | 8 | | | | | | | |
| 660 | Vestas | | | 394 Eksebo Kraft, Henning,Klint | I6c | 47/55 | 991023 | 1650 | 1526 | 1452 | 525 | 1590 | 98,9 | 103 | 59 | 0 | | | | | | | |
| 660 | Vestas | | | 401 Harriemöllan,Backgården | C2i | 47/55 | 990930 | 1430 | 1272 | 1296 | 636 | 1411 | 98,6 | 129 | 73 | 5 | | | | | | | |
| 660 | Vestas | | | 405 Storugns 1,Lärbro | J7b | 47/55 | 991217 | 1534 | 1060 | 927 | 460 | 1084 | 97,9 | 67 | 61 | 0 | | | | | | | |
| 660 | Vestas | | | 406 Storugns 2,Lärbro | J7b | 47/55 | 991215 | 1551 | 1127 | 992 | 482 | 1152 | 99 | 73 | 64 | 0 | | | | | | | |
| 660 | Vestas | | | 407 Storugns 3,Lärbro | J7b | 47/55 | 991218 | 1530 | 1141 | 1014 | 497 | 1188 | 98,5 | 76 | 65 | 0 | | | | | | | |
| 660 | Vestas | | | 408 Storugns 4,Lärbro | J7b | 47/55 | 991218 | 1528 | 1115 | 989 | 495 | 1155 | 97 | 76 | 66 | 0 | | | | | | | |
| 660 | Vestas | | | 409 Storugns 5,Lärbro | J7e | 47/55 | 991219 | 1534 | 1179 | 1047 | 498 | 1206 | 98,7 | 78 | 68 | 0 | | | | | | | |
| 660 | Vestas | | | 410 Storugns 6,Lärbro | J7b | 47/55 | 991220 | 1576 | 984 | 936 | 453 | 1065 | 98,9 | 72 | 64 | 0 | | | | | | | |
| 660 | Vestas | | | 411 Sandby 1,Vadstena | F8g | 47/55 | 990828 | 1550 | 1405 | 1302 | 509 | 1415 | 97,4 | 91 | 51 | 79 | | | | | | | |
| 660 | Vestas | | | 412 Sandby 2,Vadstena | F8g | 47/55 | 990827 | 1550 | 1042 | 1282 | 511 | 1409 | 99,2 | 94 | 54 | 6 | | | | | | | |
| 660 | Vestas | | | 413 Sandby 3,Vadstena | F8g | 47/55 | 990831 | 1550 | 1361 | 927 | 485 | 1108 | 79,3 | 88 | 58 | 9 | | | | | | | |
| 660 | Vestas | | | 421 Brinkagården,Brinkagården | C3b | 47/55 | 991215 | 1450 | 1581 | 1448 | 717 | 1617 | 98,6 | 151 | 77 | 12 | | | | | | | |
| 660 | Vestas | | | 423 Piteå Haraholmen N1,Hara | L24b | 47/55 | 991212 | 1450 | 607 | 661 | 259 | 699 | 97,6 | 50 | 48 | 0 | | | | | | 125 | |
| 660 | Vestas | | | 424 Piteå Haraholmen S2,Hara | L24b | 47/55 | 991104 | 1450 | 610 | 588 | 248 | 630 | 98,4 | 49 | 58 | 0 | | | | | | | 1 |
| 660 | Vestas | | | 427 Hedeskoga 1,Bergsjöhölm | D2b | 47/55 | 991021 | 1600 | 1324 | 1106 | 569 | 1121 | 83,5 | 154 | 75 | 10 | | | | | | | |
| 660 | Vestas | | | 428 Hedeskoga 2,Bersjöhölm | D2b | 47/55 | 991021 | 1600 | 1365 | 1274 | 637 | 1374 | 91,8 | 136 | 72 | 9 | | | | | | | |
| 660 | Vestas | | | 431 Eveboda I,Eveboda | E8c | 47/55 | 000508 | 1425 | 1240 | 1235 | 476 | 1304 | 99 | 84 | 54 | 55 | | | | | | | |
| 660 | Vestas | | | 432 Eveboda II,Eveboda | E8c | 47/55 | 000508 | 1425 | 1204 | 1189 | 465 | 1251 | 95,1 | 94 | 59 | 2 | | | | | | | |
| 660 | Vestas | | | 433 Eveboda III,Eveboda | E8c | 47/55 | 000508 | 1425 | 1194 | 1007 | 452 | 1083 | 84,3 | 100 | 61 | 2 | | | | | | | |
| 660 | Vestas | | | 434 Skäggs 1,Väs kinde | J6g | 47/50 | 000705 | 1510 | 1063 | 996 | 431 | 1116 | 98,7 | 76 | 86 | 0 | | | | | | | |
| 660 | Vestas | | | 435 Skäggs 3,Väs kinde | J6g | 47/50 | 000705 | 1510 | 1102 | 1062 | 454 | 1175 | 98,9 | 79 | 86 | 0 | | | | | | | |
| 660 | Vestas | | | 436 Månsagården,Uvered | C8f | 47/50 | 000105 | 1100 | 971 | 991 | 439 | 1085 | 99,7 | 78 | 57 | 4 | | | | | | | |
| 660 | Vestas | | | 444 Gunnön 1,Karlshamn | E3f | 47/55 | 000908 | 1600 | 1039 | 930 | 485 | 1098 | 97,9 | 69 | 59 | 1 | | | | | | | |
| 660 | Vestas | | | 445 Gunnön 2,Karlshamn | E3f | 47/55 | 000908 | 1600 | 999 | 934 | 477 | 1092 | 97,4 | 67 | 62 | 1 | | | | | | | |
| 660 | Vestas | | | 446 Gunnön 3,Karlshamn | E3f | 47/55 | 000908 | 1600 | 1097 | 968 | 459 | 1087 | 88,2 | 40 | 35 | 303 | | | | | | | |
| 660 | Vestas | | | 447 Ruth, Ingelstorp,Ingelstorp | C3e | 47/55 | 000914 | 1350 | 1329 | 1185 | 582 | 1329 | 98,1 | 106 | 82 | 0 | | | | | | | |
| 660 | Vestas | | | 448 Nordanstigsv.1,Stocka | H16b | 47/55 | 001206 | 1333 | 661 | 307 | | 42 | 100 | | | | | | | | | | |
| 660 | Vestas | | | 449 Nordanstigsv.2,Stocka | H16b | 47/55 | 001206 | 1327 | 653 | 234 | | 37 | 100 | | | | | | | | | | |
| 660 | Vestas | | | 450 Nordanstigsv.3,Stocka | H16b | 47/55 | 001206 | 1300 | 650 | 275 | | 30 | 99,9 | | | | | | | | | | |
| 660 | Vestas | | | 453 Nordanstigsv. 4,Stocka | H16b | 47/55 | 001206 | 1386 | 782 | 307 | | 42 | 99,9 | | | | | | | | | | |
| 660 | Vestas | | | 458 Helan,Hovby | D3c | 47/45 | 001124 | 1150 | 975 | 864 | 447 | 962 | 98,9 | 67 | 73 | 1 | | | | | | | |
| 660 | Vestas | | | 460 Ö-vik Själön, Ada,Husum | J19e | 47/55 | 001229 | 1534 | 1184 | 1134 | 456 | 1151 | 95,1 | 87 | 66 | 0 | | | | | | | |
| 660 | Vestas | | | 461 Ö-vik Fanbyn, Beda,Husum | J19e | 47/55 | 001229 | 1540 | 1040 | 1149 | 544 | 1215 | 87,4 | 89 | 67 | 0 | | | | | | | |
| 660 | Vestas | | | 462 Ö-vik Fanbyn, Camilla,Husu | J19e | 47/55 | 001229 | 1523 | 1334 | 1229 | 525 | 1309 | 99,1 | 78 | 62 | 0 | | | | | | | |
| 660 | Vestas | | | 463 Ö-vik Fanbyn, Dagny,Husu | J19e | 47/55 | 001229 | 1495 | 1339 | 1244 | 548 | 1348 | 98,5 | 81 | 62 | 1 | | | | | | | |
| 660 | Vestas | | | 464 Ö-vik Själön, Elly,Husum | J19e | 47/55 | 001229 | 1534 | 1218 | 1120 | 502 | 1215 | 97,7 | 79 | 61 | 0 | | | | | | | |
| 660 | Vestas | | | 465 Ö-vik Fanbyn, Fredrika,Hus | J19e | 47/55 | 001229 | 1525 | 1308 | 1230 | 559 | 1363 | 97,9 | 89 | 66 | 0 | | | | | | | |
| 660 | Vestas | | | 466 Ö-vik Fanbyn, Gertrud,Hus | J19e | 47/55 | 001229 | 1534 | 1344 | 1185 | 554 | 1302 | 94,9 | 82 | 63 | 0 | | | | | | | |
| 660 | Vestas | | | 467 Ö-vik Fanbyn, Herta,Husum | J19e | 47/55 | 001229 | 1601 | 1547 | 1460 | 634 | 1582 | 99,2 | 98 | 69 | 0 | | | | | | | |

| Ny * | Effekt (kW) | | Fabrikat | Nr Anläggning | Placering | D/H I drift | Ber MWh | 2012 MWh | 2013 MWh | 2014 MWh | 12mån MWh | 12mån % | Månad MWh | Tid % | Hindertid (tim) | | | | | | | | |
|------|-------------|-----------|----------|------------------------------|-----------|-------------|---------|----------|----------|----------|-----------|---------|-----------|-------|-----------------|-------|-----|-----|----|-----|-----|----|-----|
| | Hög | Låg | | | | | | | | | | | | | Benämning, Ort | Karta | (m) | AHT | MS | YNS | OVS | PU | OPS |
| 660 | 200 | Vestas | 442 | Levide 2,Näs | I5f | 47/45 | 001008 | 1600 | 1274 | 1275 | 581 | 1419 | 92,6 | 100 | 89 | 4 | | | | | | | |
| 660 | 200 | Vestas | 443 | Levide 3,Näs | I5f | 47/45 | 001007 | 1600 | 1231 | 1252 | 644 | 1466 | 94,1 | 100 | 76 | 10 | | | | | | | |
| 660 | 200 | Neg Micon | 490 | Västanby I,Lund | C2h | 48/55 | 010601 | 1680 | 1629 | 1555 | 723 | 1708 | 98,7 | 162 | 91 | 4 | | | | | | | |
| 660 | 200 | Neg Micon | 491 | Västanby II,Lund | C2h | 48/55 | 010601 | 1680 | 1564 | 1491 | 699 | 1653 | 98,5 | 160 | 91 | 4 | | | | | | | |
| 660 | 200 | Vestas | 626 | Brönnestad 1,Brönnestad, | C1i | 47/40 | 010406 | 1585 | 1447 | 1374 | 709 | 1550 | 98,2 | 152 | 87 | 9 | | | | | | | |
| 660 | 200 | Vestas | 627 | Brönnestad 2,Brönnestad, | C1i | 47/40 | 010406 | 1585 | 1442 | 1327 | 622 | 1453 | 96,7 | 148 | 85 | 5 | | | | | | | |
| 660 | 200 | Vestas | 628 | Eknsbo,Hönsinge | C1i | 47/40 | 010406 | 1590 | 1496 | 1367 | 697 | 1527 | 97,3 | 147 | 87 | 7 | | | | | | | |
| 660 | 200 | Vestas | 639 | Hovby, Chaplin,Hovby | D3c | 47/45 | 020131 | 1150 | 967 | 874 | 475 | 1003 | 98,8 | 69 | 75 | 1 | | | | | | | |
| 660 | 200 | Neg Micon | 695 | Bjåresjö 1,Bjåresjö | D2b | 48/55 | 020101 | 1600 | 1586 | 1446 | 681 | 1556 | 98,7 | 152 | 92 | 0 | | | | | | | |
| 750 | 175 | NEG Micon | 348 | Rodovälén 3,Rodovälén | E17a | 44/50 | 981023 | 1200 | 1029 | 1105 | 265 | 1062 | 92,1 | 95 | 85 | 5 | | | | | | | |
| 750 | 200 | NEG Micon | 360 | Vanstad Kommungård,Sjöb | D2e | 48/55 | 981104 | 1370 | 1443 | 1307 | 663 | 1464 | 98 | 141 | 91 | 1 | | | | | | | |
| 750 | 200 | NEG Micon | 373 | Ångalid,Torrösa | C3b | 48/55 | 990115 | 1470 | 1584 | 1473 | 723 | 1640 | 99,1 | 153 | 90 | 4 | | | | | | | |
| 750 | 200 | NEG Micon | 399 | Framnäs 1,Nöbbelev | C2i | 48/55 | 990923 | 1590 | 1425 | 1425 | 664 | 1523 | 97,2 | 148 | 91 | 8 | | | | | | | |
| 750 | 200 | WindWorld | 404 | Otterbäckens Vind 1,Otterb | D9i | 52/65 | 990717 | 1700 | 1338 | 547 | | 245 | 100 | | | | | | | | | | |
| 750 | 200 | NEG Micon | 451 | Vind Invest,Lysekil | A8f | 48/55 | 000112 | 1600 | 1965 | 1859 | 802 | 2144 | 98,7 | 135 | 90 | 3 | | | | | | | |
| 750 | 200 | NEG Micon | 452 | Sivik III,Lysekil | A8f | 48/55 | 000101 | 1600 | 1828 | 1463 | 621 | 1617 | 90,7 | 113 | 87 | 65 | | | | | | | |
| 750 | 200 | NEG Micon | 492 | Knöbbens Vind,Laholm | C2e | 48/55 | 010601 | 1560 | 1539 | 1316 | 345 | 1216 | 86,9 | 104 | 86 | 0 | | | | | | | |
| 750 | 200 | NEG Micon | 619 | Östorp 1:4,Östorp 1:4 | C2e | 48/55 | 001229 | 1500 | 1415 | 1073 | 233 | 878 | 71,5 | 100 | 85 | 1 | | | | | | | |
| 750 | 200 | NEG Micon | 682 | Bydalen,Bydalen | D19c | 48/45 | 020904 | 2100 | 1846 | 1981 | 625 | 2077 | 96,7 | 137 | 87 | 9 | | | | | | | |
| 750 | 200 | NEG Micon | 697 | Gislöv 3,Gislöv | C1i | 48/50 | 021014 | 1900 | 2085 | 1981 | 933 | 2185 | 99,7 | 207 | 91 | 0 | | | | | | | |
| 750 | 200 | NEG Micon | 701 | Isiegården,St Isie | C1i | 48/50 | 030801 | 1720 | 2138 | 2025 | 979 | 2243 | 99,1 | 205 | 91 | 5 | | | | | | | |
| 750 | 200 | NEG Micon | 741 | Lantan,Svalöv | C3b | 48/55 | 031230 | 1500 | 1715 | 1497 | 699 | 1626 | 93 | 159 | 93 | 0 | | | | | | | |
| 750 | 200 | NEG Micon | 775 | TANNAM, Smeby,Tannam, | A9f | 48/50 | 041201 | 1300 | 1273 | 1203 | 554 | 1451 | 96,9 | 98 | 85 | 2 | | | | | | | |
| 750 | 200 | NEG Micon | 776 | TANNAM, Ceding,Tannam, | A9f | 48/50 | 041201 | 1250 | 1133 | 1052 | 272 | 1027 | 84 | 14 | 24 | 510 | | | | | | | |
| 750 | 200 | NEG Micon | 808 | Framnäs 2,Nöbbelev | C2i | 48/55 | 050910 | 1500 | 1568 | 1448 | 664 | 1531 | 97,2 | 148 | 91 | 8 | | | | | | | |
| 750 | 200 | NEG Micon | 829 | Gislöv 4,Gislöv | C1i | 48/50 | 051208 | 1900 | 2026 | 1939 | 924 | 2139 | 98,9 | 201 | 92 | 0 | | | | | | | |
| 800 | | Enercon | 798 | Almudden,Askersund | E9f | 48/76 | 050110 | 1500 | 1241 | 1244 | 482 | 1337 | 99,6 | 89 | 85 | 0 | | | | | | | |
| 800 | | Enercon | 803 | NEWTON,Vårsås | D8f | 48/78 | 050715 | 1600 | 1313 | 1288 | 602 | 1487 | 98,8 | 104 | 92 | 0 | | | | | | | |
| 800 | | Enercon | 805 | Stavf El,Vårsås | D8f | 48/76 | 050915 | 1532 | 1366 | 1282 | 597 | 1480 | 98,6 | 101 | 91 | 7 | | | | | | | |
| 800 | | Enercon | 806 | Windy,Vårsås | E8d | 48/76 | 050919 | 1400 | 1315 | 1260 | 289 | 1153 | 99 | | | | | | | | | | |
| 800 | | Enercon | 807 | Simona Vindkraft Leringen, | D8c | 48/76 | 050901 | 1500 | 1352 | 1215 | 597 | 1406 | 96,4 | 106 | 90 | 6 | | | | | | | |
| 800 | | Enercon | 816 | Gästgivaregårdens Lamme | D8b | 48/76 | 050905 | 1700 | 1747 | 1739 | 734 | 1975 | 98,5 | 132 | 88 | 20 | | | | | | | |
| 800 | | Enercon | 817 | Hangelösa 1,Hangelösa | D8g | 48/76 | 051015 | 1527 | 1601 | 1519 | 666 | 1737 | 99,4 | 122 | 91 | 0 | | | | | | | |
| 800 | | Enercon | 818 | Stenökra, Lilla Lunden,Lilla | D8g | 48/76 | 051015 | 1500 | 1378 | 1314 | 593 | 1505 | 99,5 | 103 | 90 | 10 | | | | | | | |
| 800 | | Enercon | 819 | Skeby 3,Broby | D8g | 48/76 | 051028 | 1500 | 1590 | 1529 | 658 | 1710 | 98,2 | 119 | 88 | 22 | | | | | | | |
| 800 | | Enercon | 826 | Skallmeja Väster,Skallmeja | C8f | 48/76 | 051013 | 1700 | 1801 | 1725 | 746 | 1932 | 99,1 | 136 | 92 | 6 | | | | | | | |
| 800 | | Enercon | 827 | Helleberg 1,Helleberg | C8f | 48/50 | 051027 | 1400 | 1391 | 1357 | 591 | 1480 | 97,1 | 109 | 87 | 33 | | | | | | | |
| 800 | | Enercon | 828 | Klevberget Hällevadsholm, | A9c | 48/76 | 060220 | 1800 | 1777 | 1684 | 764 | 1900 | 96 | 135 | 94 | 0 | | | | | | | |
| 800 | | Enercon | 836 | Askers Via,Odensbacken | F10b | 48/76 | 060401 | 1400 | 1449 | 1390 | 571 | 1528 | 98,8 | 115 | 87 | 0 | | | | | | | |
| 800 | | Enercon | 837 | Naglarp 1,Kinnarp | D7g | 48/76 | 060323 | 1622 | 1382 | 1365 | 608 | 1531 | 99 | 105 | 93 | 3 | | | | | | | |
| 800 | | Enercon | 838 | Beateberg 1,Knislinge | D3f | 48/65 | 051223 | 1150 | 1003 | 872 | 427 | 951 | 96,3 | 64 | 85 | 3 | | | | | | | |
| 800 | | Enercon | 839 | Hattefjäll,Hällevadsholm | B9a | 48/76 | 060220 | 1585 | 1894 | 1812 | 793 | 2042 | 98,2 | 142 | 94 | 0 | | | | | | | |
| 800 | | Enercon | 841 | Kalmarsund Vind,Degerha | G3i | 48/50 | 060719 | 2000 | 2262 | 2084 | 869 | 2250 | 97,2 | 154 | 95 | 5 | | | | | | | |
| 800 | | Enercon | 849 | Hällingarna, iDA,Ollebacken | F20a | 48/74 | 060915 | 2000 | 1744 | 1978 | 546 | 1879 | 97,7 | 138 | 92 | 7 | | | | | | | |
| 800 | | Enercon | 852 | Kvismaren 2,Odensbacken | F10c | 48/76 | 061101 | 1420 | 1373 | 1275 | 513 | 1397 | 98,1 | 100 | 88 | 0 | | | | | | | |
| 800 | | Enercon | 854 | Bränna,Skänninge | F8d | 48/76 | 070101 | 1550 | 1475 | 1441 | 600 | 1578 | 99,7 | 116 | 91 | 0 | | | | | | | |
| 800 | | Enercon | 860 | Torseröds Vindkraftpark 1,T | A9f | 48/55 | 070131 | 1550 | 1615 | 1638 | 718 | 1894 | 99,3 | 131 | 92 | 0 | | | | | | | |
| 800 | | Enercon | 861 | Torseröds Vindkraftpark 2,T | A9f | 48/55 | 070131 | 1550 | 1286 | 1312 | 583 | 1525 | 99,1 | 104 | 90 | 0 | | | | | | | |
| 800 | | Enercon | 862 | Torseröds Vindkraftpark 3,T | A9f | 48/55 | 070131 | 1550 | 1354 | 1362 | 602 | 1596 | 99,7 | 105 | 89 | 3 | | | | | | | |
| 800 | | Enercon | 863 | Torseröds Vindkraftpark 4,T | A9f | 48/55 | 070131 | 1550 | 1253 | 1262 | 557 | 1474 | 99,3 | 100 | 90 | 0 | | | | | | | |
| 800 | | Enercon | 864 | Torseröds Vindkraftpark 5,T | A9f | 48/55 | 070131 | 1550 | 1330 | 1345 | 590 | 1562 | 99,4 | 97 | 85 | 31 | | | | | | | |
| 800 | | Enercon | 865 | Torseröds Vindkraftpark 6,T | A9f | 48/55 | 070131 | 1550 | 1237 | 1250 | 555 | 1458 | 99,4 | 97 | 89 | 7 | | | | | | | |
| 800 | | Enercon | 866 | Kvarnen vindkraft,Kvarnen | D8g | 53/73 | 070505 | 1500 | 1581 | 1563 | 684 | 1774 | 98,3 | 128 | 93 | 0 | | | | | | | |
| 800 | | Enercon | 873 | Härjevads Vind,Härjevad | C8f | 53/75 | 070525 | 1700 | 1920 | 1877 | 810 | 2066 | 98,6 | 146 | 93 | 0 | | | | | | | |
| 800 | | Enercon | 874 | Gömta Vind,Gömta | D8e | 53/75 | 070601 | 1500 | 1368 | 1312 | 591 | 1492 | 97,4 | 109 | 92 | 1 | | | | | | | |
| 800 | | Enercon | 875 | Elin 1,Göteve Liden 2 | D7g | 53/75 | 070628 | 1800 | 1561 | 1500 | 724 | 1740 | 94 | 124 | 94 | 106 | | | | | | | |
| 800 | | Enercon | 876 | Söderbodane 1,Söderboda | C9g | 53/73 | 070830 | 1500 | 1425 | 1379 | 592 | 1513 | 96,7 | 104 | 92 | 0 | | | | | | | |
| 800 | | Enercon | 877 | Rangeltorp 1,Rangeltorp | C8c | 53/75 | 070614 | 1430 | 1447 | 1418 | 592 | 1567 | 97,6 | 90 | 80 | 91 | | | | | | | |
| 800 | | Enercon | 883 | Hackegården 1,Mjölby | F8d | 48/63 | 070912 | 1800 | 1363 | 1286 | 528 | 1421 | 94,1 | 107 | 89 | 96 | | | | | | | |
| 800 | | Enercon | 884 | Hackegården 2,Mjölby | F8d | 48/63 | 070921 | 1800 | 1385 | 1293 | 531 | 1413 | 98,8 | 98 | 90 | 0 | | | | | | | |
| 800 | | Enercon | 886 | Lovene,Källands Åsaka | C8f | 53/73 | 070801 | 1800 | 1691 | 1670 | 695 | 1816 | 99,1 | 132 | 92 | 11 | | | | | | | |
| 800 | | Enercon | 887 | Torkelsrud,Valbo Ryr | B8h | 53/73 | 071017 | 1800 | 1469 | 1469 | 639 | 1634 | 96,9 | 114 | 89 | 17 | | | | | | | |
| 800 | | Enercon | 954 | Askegården,Skänninge | F8d | 53/73 | 071211 | 1600 | 1608 | 1557 | 625 | 1675 | 98,4 | 121 | 92 | 1 | | | | | | | |
| 800 | | Enercon | 955 | Åsen Tumleberg 1,Åsen | C8b | 53/73 | 071123 | 1600 | 1443 | 1469 | 602 | 1615 | 98,4 | 121 | 92 | 2 | | | | | | | |
| 800 | | Enercon | 963 | Borringe 1,Borensberg | F8e | 53/75 | 071218 | 1750 | 1691 | 1580 | 663 | 1734 | 98,7 | 129 | 90 | 2 | | | | | | | |
| 800 | | Enercon | 964 | Fingal af Boberg,Borensber | F8e | 53/75 | 071218 | 1750 | 1647 | 1541 | 645 | 1690 | 98,1 | 124 | 91 | 2 | | | | | | | |
| 800 | | Enercon | 965 | Boberg 1,Borensberg | F8e | 53/75 | 071218 | 1750 | 1642 | 1537 | 647 | 1691 | 98,8 | 125 | 92 | 0 | | | | | | | |
| 800 | | Enercon | 975 | Carpe Ventum 1,Torp | C9a | 53/78 | 071101 | 1800 | 1745 | 1700 | 730 | 1861 | 98,3 | 130 | 87 | 27 | | | | | | | |
| 800 | | | | | | | | | | | | | | | | | | | | | | | |

| Ny * | Effekt (kW) | | Fabrikat | Nr Anläggning | Placering | D/H I drift | Ber MWh | 2012 MWh | 2013 MWh | 2014 MWh | 12mån MWh | 12mån % | Månad MWh | Tid % | Hindertid (tim) | | | | | | | |
|------|-------------|------|--------------------------------|---------------|-----------|-------------|---------|----------|----------|----------|-----------|---------|-----------|-------|-----------------|-------|-----|-----|----|-----|-----|----|
| | Hög | Låg | | | | | | | | | | | | | Benämning, Ort | Karta | (m) | AHT | MS | YNS | OVS | PU |
| 800 | Enercon | 1067 | Kristin 1,Blixtorp | D8c | 53/73 | 070430 | 1500 | 1443 | 1339 | 595 | 1508 | 98,1 | 107 | 91 | 0 | | | | | | | |
| 800 | Enercon | 1068 | Kristin 2,Blixtorp | D8c | 53/73 | 080531 | 1500 | 1463 | 1363 | 637 | 1565 | 99,6 | 110 | 92 | 0 | | | | | | | |
| 800 | Enercon | 1069 | Kristin 3,Blixtorp | D8c | 53/73 | 080531 | 1500 | 1482 | 1366 | 638 | 1569 | 99,6 | 105 | 91 | 0 | | | | | | | |
| 800 | Enercon | 1070 | Karwind,Korsberga | E8d | 53/73 | 070616 | 1500 | 1427 | 1362 | 627 | 1548 | 99,2 | 108 | 91 | 0 | | | | | | | |
| 800 | Enercon | 1083 | Arvidstorp Vind 1,Mellby | C8f | 53/73 | 090519 | 1800 | 1640 | 1606 | 683 | 1761 | 99,5 | 127 | 93 | 0 | | | | | | | |
| 800 | Enercon | 1084 | Arvidstorp Vind 2,Mellby | C8f | 53/73 | 090519 | 1800 | 1622 | 1583 | 652 | 1696 | 99 | 122 | 93 | 0 | | | | | | | |
| 800 | Enercon | 1085 | Lovene 3,Lovene | C8f | 53/73 | 090430 | 1800 | 1725 | 1683 | 714 | 1843 | 98,6 | 136 | 93 | 0 | | | | | | | |
| 800 | Enercon | 1091 | Hörby 1, Susan H,Hörby | E3b | 48/65 | 070828 | 1500 | 1331 | 1294 | 639 | 1449 | 98,9 | 101 | 92 | 0 | | | | | | | |
| 800 | Enercon | 1092 | Hörby 2, Susan H,Hörby | E3b | 48/65 | 070828 | 1500 | 1268 | 1214 | 594 | 1347 | 98,5 | 92 | 90 | 0 | | | | | | | |
| 800 | Enercon | 1093 | Hörby 3,Hörby | E3b | 48/65 | 070828 | 1500 | 1330 | 1269 | 604 | 1392 | 98,7 | 97 | 92 | 0 | | | | | | | |
| 800 | Enercon | 1094 | Rålanda 1, Dan C,Rålanda | B8d | 48/65 | 061101 | 1500 | 1236 | 1278 | 547 | 1434 | 97,1 | 98 | 92 | 0 | | | | | | | |
| 800 | Enercon | 1102 | Möllebacken 3,Nosaby | E3a | 48/65 | 090901 | 1500 | 1468 | 1325 | 656 | 1497 | 98,5 | 101 | 92 | 0 | | | | | | | |
| 800 | Enercon | 1119 | OSVALD,Klockrike | F8h | 53/72 | 091003 | 1695 | 1605 | 1509 | 633 | 1661 | 97,7 | 125 | 91 | 3 | | | | | | | |
| 800 | Enercon | 1123 | Bjälbo Energi, Karin,Bjälbo | F8d | 53/73 | 081217 | 2100 | 2159 | 2053 | 833 | 2229 | 99,6 | 160 | 94 | 6 | | | | | | | |
| 800 | Enercon | 1137 | Lörby 4, Pehr,Lörby | E3b | 53/73 | 100101 | 1750 | 1691 | 1654 | 803 | 1861 | 99,7 | 134 | 94 | 7 | | | | | | | |
| 800 | Enercon | 1138 | Lörby 5, Mattis,Lörby | E3b | 53/73 | 100101 | 1750 | 1755 | 1580 | 734 | 1724 | 96,4 | 136 | 93 | 9 | | | | | | | |
| 800 | Enercon | 1139 | Lörby 6, Daniel,Lörby | E3b | 53/73 | 100101 | 1750 | 1728 | 1701 | 809 | 1898 | 99 | 134 | 90 | 35 | | | | | | | |
| 800 | Enercon | 1140 | Lörby 7, Elin,Lörby | E3b | 53/73 | 100101 | 1750 | 1796 | 1721 | 839 | 1932 | 99,6 | 145 | 94 | 0 | | | | | | | |
| 800 | Enercon | 1151 | Berit 2, Lilla Lunden,Lilla Lu | D8g | 53/74 | 101203 | 1800 | 1511 | 1485 | 665 | 1687 | 99,7 | 118 | 93 | 2 | | | | | | | |
| 800 | Enercon | 1156 | Byåra 2,Borby | D2c | 53/73 | 091201 | 2600 | 2797 | 2772 | 1224 | 2921 | 96,8 | 278 | 95 | 18 | | | | | | | |
| 800 | Enercon | 1181 | Marieholm III,Marieholm | C2i | 53/60 | 080515 | 2000 | 2047 | 2009 | 985 | 2215 | 99 | 208 | 96 | 2 | | | | | | | |
| 800 | Enercon | 1182 | Marieholm 4,Marieholm | C2i | 53/60 | 080515 | 2000 | 1959 | 1905 | 939 | 2094 | 99 | 197 | 95 | 3 | | | | | | | |
| 800 | Enercon | 1197 | Petersborg 1,Lindshammar | F5g | 53/73 | 090501 | 1500 | 1337 | 1290 | 492 | 1362 | 95,4 | 55 | 59 | 245 | | | | | | | |
| 800 | Enercon | 1198 | Petersborg 2,Lindshammar | F5g | 53/73 | 090501 | 1500 | 1340 | 1279 | 511 | 1362 | 96,4 | 106 | 92 | 21 | | | | | | | |
| 800 | Enercon | 1224 | Säby 1, Seth,Säby | F3f | 48/64 | 100501 | 1650 | 1604 | 1534 | 720 | 1738 | 99,8 | 138 | 94 | 0 | | | | | | | |
| 800 | Enercon | 1225 | Säby 2, Ängla,Säby | F3f | 48/64 | 100501 | 1650 | 1504 | 1451 | 659 | 1621 | 99,3 | 126 | 93 | 0 | | | | | | | |
| 800 | Enercon | 1226 | Säby 3, Birk,Säby | F3f | 48/64 | 100501 | 1650 | 1428 | 1419 | 656 | 1611 | 99,6 | 126 | 93 | 0 | | | | | | | |
| 800 | Enercon | 1227 | Säby 4, Yrsa,Säby | F3f | 48/64 | 100501 | 1650 | 1533 | 1463 | 666 | 1637 | 99,4 | 128 | 94 | 0 | | | | | | | |
| 800 | Enercon | 1229 | Hedeberga,Tomellilla | D2c | 53/64 | 100215 | 2200 | 2032 | 2000 | 920 | 2130 | 99 | 185 | 93 | 1 | | | | | | | |
| 800 | Enercon | 1244 | Vena Säby,Brålanda | C9a | 53/73 | 071201 | 1800 | 1714 | 1680 | 728 | 1862 | 99,2 | 138 | 91 | 0 | | | | | | | |
| 800 | Enercon | 1247 | Långöre 2, Herman,Långör | H5a | 53/73 | 100719 | 2500 | 2685 | 2517 | 1063 | 2691 | 97,9 | 186 | 97 | 0 | | | | | | | |
| 800 | Enercon | 1257 | Långöre 3,Långöre | H5a | 53/73 | 100901 | 2200 | 2625 | 2590 | 1042 | 2654 | 99,7 | 179 | 97 | 0 | | | | | | | |
| 800 | Enercon | 1312 | MellsaVind 1,Stora Mellösa | F10b | 53/73 | 100910 | 1580 | 1344 | 1296 | 542 | 1432 | 99,4 | 107 | 90 | 2 | | | | | | | |
| 800 | Enercon | 1318 | Kvismaren 3,Odensbacken | F10c | 53/74 | 101004 | 1550 | 1509 | 1368 | 554 | 1489 | 97,9 | 112 | 89 | 0 | | | | | | | |
| 800 | Enercon | 1371 | Mönarp 1, Universal Wind, | D7g | 53/73 | 110301 | 1700 | 1541 | 1535 | 691 | 1731 | 99,1 | 117 | 91 | 0 | | | | | | | |
| 800 | Enercon | 1372 | Mönarp 2, Universal Wind, | D7g | 53/73 | 110331 | 1700 | 1573 | 1497 | 695 | 1702 | 98,4 | 118 | 90 | 7 | | | | | | | |
| 800 | Enercon | 1373 | Mönarp 3, Universal Wind, | D7g | 53/73 | 110331 | 1700 | 1645 | 1551 | 704 | 1749 | 99 | 120 | 89 | 8 | | | | | | | |
| 800 | Enercon | 1374 | Mönarp 4, Universal Wind, | D7g | 53/73 | 110331 | 1700 | 1462 | 1586 | 689 | 1764 | 98,7 | 121 | 91 | 2 | | | | | | | |
| 800 | Enercon | 1558 | Varby 2,Varby | F8g | 53/73 | 110617 | 1750 | 1657 | 1644 | 652 | 1768 | 98,8 | 129 | 92 | 0 | | | | | | | |
| 800 | Enercon | 1637 | Skenaån Vind 1 Valdemar, | F8d | 53/73 | 120307 | 1800 | 810 | 1728 | 700 | 1884 | 99,5 | 137 | 91 | 3 | | | | | | | |
| 800 | Enercon | 1638 | Skenaån Vind 2 Bengt,Bjälb | F8d | 53/73 | 120320 | 1800 | 799 | 1661 | 670 | 1786 | 99 | 130 | 92 | 4 | | | | | | | |
| 800 | Enercon | 1639 | Skenaån Vind 3 Kristina,Bjä | F8d | 53/73 | 120326 | 1800 | 829 | 1711 | 674 | 1846 | 99,3 | 133 | 91 | 5 | | | | | | | |
| 850 | Vestas | 468 | Lanna 1, Lidköping,Lanna | C8f | 52/49 | 001228 | 1350 | 1534 | 1514 | 650 | 1671 | 98,3 | 118 | 76 | 6 | | | | | | | |
| 850 | Vestas | 487 | Roxett,Näsby | F8f | 52/55 | 010116 | 1470 | 1052 | 872 | 353 | 1007 | 97,1 | 72 | 64 | 5 | | | | | | | |
| 850 | Vestas | 488 | Skog 1,Söne | C8i | 52/65 | 010601 | 1870 | 1709 | 1675 | 559 | 1719 | 91,7 | 124 | 78 | 14 | | | | | | | |
| 850 | Vestas | 601 | Runnestad I,Runnestad | E8c | 52/65 | 010803 | 1915 | 1700 | 1680 | 642 | 1801 | 99,1 | 130 | 80 | 3 | | | | | | | |
| 850 | Vestas | 602 | Högby I,Högby | F8d | 52/65 | 010906 | 1660 | 1345 | 1314 | 577 | 1462 | 98 | 107 | 80 | 1 | | | | | | | |
| 850 | Vestas | 603 | Ö-vik Inger,Norrväge | J19a | 52/55 | 010827 | 2160 | 904 | 1354 | 476 | 1340 | 97,1 | 82 | 62 | 0 | | | 2 | | | | 1 |
| 850 | Vestas | 604 | Ö-vik Gun,Norrväge | J19a | 52/55 | 010928 | 2160 | 1214 | 1097 | 546 | 1162 | 77,9 | 85 | 67 | 0 | | | 1 | | | | |
| 850 | Vestas | 614 | Bränneberg 1,Jung | C8f | 52/49 | 010825 | 1400 | 1417 | 1255 | 337 | 1171 | 87,1 | | | | | | | | | | |
| 850 | Vestas | 615 | Bränneberg 2,Jung | C8f | 52/49 | 010825 | 1400 | 1420 | 1538 | 658 | 1708 | 98,7 | 120 | 84 | 3 | | | | | | | |
| 850 | Vestas | 622 | Vitåkra,Everöd Brogård | D2c | 52/55 | 020115 | 1950 | 1704 | 1620 | 785 | 1732 | 98 | 175 | 81 | 15 | | | | | | | |
| 850 | Vestas | 623 | Skog 2,Söne | C8i | 52/74 | 020204 | 2000 | 1887 | 1761 | 757 | 1995 | 97,4 | 134 | 79 | 10 | | | | | | | |
| 850 | Vestas | 624 | Kampa 1,Kampagården Sm | D7h | 52/65 | 020128 | 1765 | 1477 | 1378 | 692 | 1671 | 98,4 | 122 | 74 | 3 | | | | | | | |
| 850 | Vestas | 625 | Herrgårdsvind, Hogstad,Ho | F8d | 52/65 | 020110 | 1705 | 1578 | 1549 | 616 | 1676 | 99 | 122 | 80 | 0 | | | | | | | |
| 850 | Vestas | 629 | Hill Mill,Rök | E8c | 52/65 | 020218 | 1850 | 1583 | 1551 | 565 | 1601 | 37,8 | 117 | 74 | 720 | | | | | | | |
| 850 | Vestas | 630 | Bårstad,Borghamn | E8f | 52/55 | 020222 | 2030 | 1966 | 1705 | 717 | 1901 | 96 | 124 | 69 | 13 | | | | | | | |
| 850 | Vestas | 632 | Spargodt,Tågarp | C3b | 52/65 | 011108 | 1850 | 1865 | 1346 | 720 | 1401 | 31 | 124 | 60 | 720 | | | | | | | |
| 850 | Vestas | 636 | Häckenäs III,Borghamn | E8f | 52/50 | 020226 | 1955 | 1791 | 1855 | 719 | 1996 | 97,1 | 133 | 75 | 7 | | | | | | | |
| 850 | Vestas | 638 | Långben, Långlöt,Långlöt | H4g | 52/65 | 020314 | 1500 | 1687 | 1587 | 694 | 1692 | 97,6 | 112 | 90 | 5 | | | | | | | |
| 850 | Vestas | 648 | Kärragården,Bjåresjö | D2b | 52/55 | 020913 | 1800 | 1807 | 1721 | 821 | 1846 | 98,7 | 173 | 86 | 0 | | | | | | | |
| 850 | Vestas | 649 | Kärragården K4R,Bjåresjö | D2b | 52/55 | 020913 | 1800 | 1755 | 1700 | 823 | 1836 | 98,6 | 188 | 85 | 0 | | | | | | | |
| 850 | Vestas | 650 | Hovgården I,Hov | E8f | 52/55 | 021004 | 1750 | 1672 | 1598 | 688 | 1780 | 98,3 | 124 | 75 | 2 | | | | | | | |
| 850 | Vestas | 651 | Kulle 3 Havdhem,Havdhem | I5i | 52/55 | 021029 | 1800 | 1772 | 1514 | 672 | 1704 | 98,2 | 126 | 83 | 26 | | | | | | | |
| 850 | Vestas | 652 | Kulle 4 Havdhem,Havdhem | I5i | 52/55 | 021029 | 1740 | 1691 | 1522 | 685 | 1709 | 98,6 | 128 | 86 | 0 | | | | | | | |
| 850 | Vestas | 653 | Kulle 5 Havdhem,Havdhem | I5i | 52/55 | 021029 | 1700 | 1517 | 1482 | 646 | 1643 | 95,1 | 128 | 86 | 12 | | | | | | | |
| 850 | Vestas | 654 | Kulle 6 Havdhem,Havdhem | I5i | 52/55 | 021029 | 1720 | 1602 | 1511 | 680 | 1719 | 98,7 | 126 | 86 | 6 | | | | | | | |
| 850 | Vestas | 655 | Kulle 7 Havdhem,Havdhem | I5i | 52/55 | 021029 | 1690 | 1610 | 1514 | 698 | 1718 | 98 | 131 | 85 | 11 | | | | | | | |
| 850 | Vestas | 656 | Kulle 8 Havdhem,Havdhem | I5i | 52/55 | 021029 | 1730 | 1613 | 1513 | 687 | 1707 | 97,5 | 132 | 88 | 5 | | | | | | | |
| 850 | Vestas | 657 | Kulle 9 Havdhem,Havdhem | I5i | 52/55 | 021029 | 1730 | 1654 | 1490 | 713 | 1730 | 95,8 | 125 | 86 | 3 | | | | | | | |
| 850 | Vestas | 658 | Kulle | | | | | | | | | | | | | | | | | | | |

| Ny * | Effekt (kW) | | Fabrikat | Nr Anläggning | Placering | D/H I drift | Ber MWh | 2012 MWh | 2013 MWh | 2014 MWh | 12mån MWh | 12mån % | Månad MWh | Tid % | Hindertid (tim) | | | | | | |
|------|---------------|------|------------------------------|---------------|-----------|-------------|---------|----------|----------|----------|-----------|---------|-----------|-------|-----------------|-------|-----|-----|----|-----|-----|
| | Hög | Låg | | | | | | | | | | | | | Benämning, Ort | Karta | (m) | AHT | MS | VNS | OVS |
| 850 | Vestas | 717 | Kärrgård, Lidan, Bjäresjö | D2b | 52/55 | 030410 | 1850 | 1877 | 1827 | 926 | 2014 | 96,2 | 203 | 86 | 7 | | | | | | |
| 850 | Vestas | 719 | Grimskullen, Grimskullen M | D7g | 52/65 | 010405 | 1800 | 1622 | 1561 | 745 | 1794 | 98,5 | 124 | 78 | 8 | | | | | | |
| 850 | Vestas | 720 | Stora Lund, Stora Lund | D8g | 52/74 | 030714 | 1500 | 1437 | 1412 | 542 | 1512 | 94,5 | 111 | 74 | 7 | | | | | | |
| 850 | Vestas | 721 | Skeby 2, Källby | D8g | 52/49 | 030723 | 1200 | 1165 | 1111 | 585 | 1325 | 95,9 | 140 | 79 | 14 | | | | | | |
| 850 | Vestas | 722 | Frittorp, Sparlösa Frittorp | C8e | 52/74 | 030714 | 1700 | 1693 | 1635 | 704 | 1824 | 98,2 | 129 | 80 | 2 | | | | | | |
| 850 | Vestas | 723 | Erikstorp 2, Lundsbrunn | D8h | 52/74 | 031024 | | 1221 | 1178 | 527 | 1347 | 38,1 | 97 | 72 | 720 | | | | | | |
| 850 | Vestas | 724 | Grebban 3, Tanumshede, T | A9f | 52/50 | 030706 | 1600 | 1584 | 1546 | 654 | 1767 | 98,4 | 118 | 78 | 0 | | | | | | |
| 850 | Vestas | 725 | Kärrets Gärd II, Långås | B5f | 52/74 | 031125 | 1760 | 1709 | 1562 | 697 | 1740 | 94,3 | 85 | 53 | 212 | | | | | | |
| 850 | Vestas | 726 | Glänås Vind, Väderstad | E8c | 52/65 | 031115 | 1700 | 1663 | 1606 | 656 | 1767 | 98,7 | 125 | 75 | 20 | | | | | | |
| 850 | Vestas | 727 | Valla Vind, Runnestad | E8c | 52/65 | 031107 | 1700 | 1610 | 1560 | 613 | 1679 | 96,9 | 127 | 79 | 2 | | | | | | |
| 850 | Vestas | 728 | Skeby/Tungelunda I, Väders | E8c | 52/74 | 031107 | 1800 | 1751 | 1683 | 631 | 1777 | 98,3 | 124 | 78 | 19 | | | | | | |
| 850 | Vestas | 731 | Elvinda, Rocklunda, Rocklun | F8g | 52/65 | 031103 | 1600 | 1615 | 1571 | 616 | 1672 | 98,3 | 105 | 71 | 63 | | | | | | |
| 850 | Vestas | 732 | Stavlösa Vind I, Stavlösa | E8f | 52/65 | 031205 | 1750 | 1823 | 1680 | 742 | 1886 | 98,3 | 137 | 78 | 7 | | | | | | |
| 850 | Vestas | 733 | Stavlösa Vind II, Stavlösa | E8f | 52/65 | 031205 | 1750 | 1847 | 1744 | 768 | 1951 | 99,4 | 139 | 82 | 5 | | | | | | |
| 850 | Vestas | 734 | Stavlösa Vind III, Stavlösa | F8d | 52/65 | 031205 | 1750 | 1802 | 1686 | 741 | 1898 | 99,3 | 133 | 81 | 5 | | | | | | |
| 850 | Vestas | 739 | Mofalla Laggarebolet, Lagga | E8d | 52/65 | 031210 | | 1435 | 1340 | 666 | 1602 | 99,6 | 109 | 81 | 0 | | | | | | |
| 850 | Vestas | 743 | Heås, Sibräcka, Sibräcka | B7g | 52/60 | 040121 | 1900 | 2432 | 2262 | 1006 | 2558 | 87,5 | 160 | 86 | 5 | | | | | | |
| 850 | Vestas | 748 | Björnskillen, Kajsa, Ljungda | C18f | 52/65 | 031211 | 1900 | 1287 | 1295 | 457 | 1385 | 94,5 | 106 | 59 | 9 | | | | | | |
| 850 | Vestas | 749 | Sparlösa, Sparlösa | C8e | 52/65 | 030901 | 1650 | 1577 | 1582 | 690 | 1796 | 99,2 | 125 | 80 | 2 | | | | | | |
| 850 | Vestas | 751 | Stenkil, Stenskilsvärv, Varv | F8g | 52/65 | 040128 | 1700 | 1531 | 1443 | 601 | 1588 | 96,9 | 114 | 80 | 5 | | | | | | |
| 850 | Vestas | 762 | Kvismaren 1, Odensbacken | F10c | 52/74 | 040401 | 1430 | 1099 | 1290 | 502 | 1385 | 38,6 | 99 | 67 | 720 | | | | | | |
| 850 | Vestas | 764 | Ölanda, Istrum | D8h | 52/74 | 040225 | 1400 | 1243 | 1183 | 584 | 1405 | 99,6 | 96 | 75 | 6 | | | | | | |
| 850 | Vestas | 766 | Andersfält, 1SYD, Tönnersa | C4e | 52/65 | 040131 | 1700 | 1637 | 1361 | 653 | 1535 | 98,1 | 103 | 79 | 0 | | | | | | |
| 850 | Vestas | 767 | Andersfält, 2 MITT, Tönnersa | C4e | 52/65 | 040131 | 1750 | 1664 | 1523 | 730 | 1729 | 98,8 | 113 | 79 | 3 | | | | | | |
| 850 | Vestas | 768 | Andersfält, 3 NORR, Törnne | C4e | 52/65 | 040131 | 1750 | 1804 | 1473 | 729 | 1685 | 97,9 | 115 | 79 | 0 | | | | | | |
| 850 | Vestas | 769 | Långeryd I, Långeryd | F8d | 52/65 | 040506 | 1750 | 1816 | 1768 | 719 | 1922 | 99,7 | 135 | 80 | 8 | | | | | | |
| 850 | Vestas | 770 | Långeryd II, Långeryd | F8d | 52/65 | 040506 | 1750 | 1841 | 1750 | 718 | 1906 | 98,6 | 135 | 75 | 65 | | | | | | |
| 850 | Vestas | 773 | Brunnstorp Källby, Broby-Br | D8g | 52/74 | 040713 | 1500 | 1537 | 1475 | 675 | 1683 | 98,4 | 121 | 74 | 20 | | | | | | |
| 850 | Vestas | 784 | St Wahlyb, Väderstad | F8d | 52/74 | 041206 | 1850 | 1865 | 1767 | 720 | 1933 | 99,5 | 135 | 80 | 1 | | | | | | |
| 850 | Vestas | 786 | Isberget I, Skonberga | F8e | 52/74 | 050103 | 1600 | 1601 | 1553 | 623 | 1671 | 99,4 | 119 | 74 | 5 | | | | | | |
| 850 | Vestas | 787 | Isberget II, Skonberga | F8e | 52/74 | 050103 | 1600 | 1551 | 1497 | 602 | 1613 | 99,7 | 115 | 75 | 1 | | | | | | |
| 850 | Vestas | 788 | Isberget III, Skonberga | F8e | 52/74 | 050103 | 1600 | 1554 | 1499 | 593 | 1595 | 84,6 | 114 | 76 | 1 | | | | | | |
| 850 | Vestas | 794 | Blås ut Vind AB, Lundsbrun | D8g | 52/74 | 041213 | 1500 | 1345 | 1325 | 562 | 1473 | 95,5 | 49 | 37 | 371 | | | | | | |
| 850 | Vestas | 795 | Kilabacken Vind AB, Lundsbr | D8g | 52/74 | 050118 | 1550 | 1651 | 1547 | 696 | 1775 | 97,2 | 125 | 77 | 0 | | | | | | |
| 850 | Vestas | 796 | Ova Vind, Lundsbrunn | D8g | 52/74 | 050116 | 1500 | 1511 | 1451 | 661 | 1678 | 98,9 | 117 | 74 | 0 | | | | | | |
| 850 | Vestas | 797 | Ryda Vind AB, Ryda | C8b | 52/74 | 050127 | 1600 | 1745 | 1747 | 726 | 1902 | 99,6 | 131 | 81 | 0 | | | | | | |
| 850 | Vestas | 799 | Storön 1, Storön | M25c | 52/65 | 050201 | 1700 | 1807 | 1763 | 597 | 1791 | 93,6 | 150 | 77 | 1 | | | | | | |
| 850 | Vestas | 800 | Hunflen, Ferdinand 20615, | E13a | 52/65 | 050403 | 1800 | 1968 | 1974 | 705 | 2051 | 96,9 | 168 | 82 | 0 | | | | | | |
| 850 | Vestas | 801 | Hunflen, Vilhelm 20616, Äpp | E13a | 52/65 | 050504 | 1800 | 1746 | 1899 | 656 | 1994 | 98,7 | 149 | 80 | 0 | | | | | | |
| 850 | Vestas | 802 | Viglunda, Skara | D8d | 52/72 | 050517 | 1600 | 1491 | 1437 | 647 | 1644 | 97,2 | 115 | 78 | 7 | | | | | | |
| 850 | Vestas | 804 | Östest-kröket, Tännäs | C17f | 52/55 | 051124 | 1900 | 2367 | 2556 | 958 | 2751 | 96,9 | 192 | 83 | 6 | | | | | | |
| 850 | Vestas | 820 | Lönhult, Lönhults gård | C3d | 52/74 | 051017 | 1875 | 2275 | 1916 | 888 | 2107 | 53,5 | 156 | 84 | 720 | | | | | | |
| 850 | Vestas | 840 | Uljeberg, Uljebergs Säteri | F8e | 52/74 | 051221 | 1400 | 1418 | 1332 | 512 | 1407 | 97,8 | 98 | 73 | 5 | | | | | | |
| 850 | Vestas | 842 | Vannborga Övra, Borgholm | H5a | 52/44 | 041231 | 1700 | 1936 | 1779 | 660 | 1810 | 99,3 | 108 | 82 | 8 | | | | | | |
| 850 | Vestas | 843 | Vannborga Nedra, Borgholm | H5a | 52/44 | 041231 | 1700 | 2106 | 1905 | 709 | 1940 | 98,1 | 122 | 81 | 7 | | | | | | |
| 850 | Vestas | 844 | Ekekullen, Dintestorp | D7h | 52/74 | 051228 | 1650 | 1556 | 1493 | 675 | 1721 | 99,6 | 113 | 82 | 2 | | | | | | |
| 850 | Vestas | 848 | Örum Ystad, Örum | D2c | 52/65 | 050520 | 2400 | 2362 | 2438 | 1107 | 2570 | 97,9 | 251 | 90 | 3 | | | | | | |
| 850 | Vestas | 853 | Lyckevind Istrum, Istrum | D8e | 52/74 | 061130 | 1400 | 1287 | 1248 | 570 | 1443 | 96,6 | 99 | 76 | 2 | | | | | | |
| 850 | Vestas | 855 | Brönnestad 3, Brönnestad B | C11 | 52/52 | 070206 | 2050 | 2254 | 2066 | 1034 | 2310 | 90,9 | 227 | 88 | 4 | | | | | | |
| 850 | Vestas | 977 | Uvbergets Hanna, Smedjeb | F12e | 52/74 | 070105 | 1800 | 1615 | 1633 | 576 | 1633 | 99,5 | 128 | 78 | 0 | | | | | | |
| 850 | Vestas | 1001 | Börstad 1, Börstad | F8d | 52/65 | 070308 | 1750 | 1753 | 1686 | 700 | 1847 | 99,5 | 124 | 77 | 7 | | | | | | |
| 850 | Vestas | 1011 | Storön 2, Storön | M25c | 52/74 | 081011 | 1650 | 1985 | 2042 | 793 | 2173 | 98,2 | 163 | 65 | 105 | | | | | | |
| 850 | Vestas | 1014 | Stavlösa Vind IV, Stavlösa | F8d | 52/65 | 080704 | 1750 | 1803 | 1675 | | 1117 | 98,3 | | | | | | | | | |
| 850 | Vestas | 1028 | Räfsjö Vind 1, Räfsjö Säteri | F8d | 52/74 | 080711 | 1700 | 1896 | 1847 | 682 | 1936 | 93 | 144 | 80 | 10 | | | | | | |
| 850 | Vestas | 1031 | Varnås vind, Väderstad | F8d | 52/74 | 090218 | 1800 | 1737 | 1612 | 642 | 1748 | 97,1 | 127 | 77 | 2 | | | | | | |
| 850 | Vestas | 1103 | TÖS, Väderstad | E8f | 52/74 | 090115 | 1800 | 1870 | 1771 | 709 | 1936 | 97,6 | 135 | 75 | 19 | | | | | | |
| 850 | Vestas | 1253 | Uvbergets Boel, Smedjebac | F12e | 52/74 | 100601 | 1500 | 1518 | 1573 | 517 | 1536 | 98,7 | 115 | 77 | 0 | | | | | | |
| 850 | Gamesa | 1575 | Åskekärr 1, Töreboda | D9c | 58/65 | 110301 | | 704 | 1013 | 451 | 1144 | 96,7 | 42 | 44 | 0 | | | | | | |
| 850 | Gamesa | 1576 | Åskekärr 2, Töreboda | D9c | 58/65 | 110301 | | 720 | 992 | 428 | 1088 | 96,1 | 46 | 44 | 0 | | | | | | |
| 850 | Gamesa | 1577 | Odensbacken, Odensbacke | F10b | 58/65 | 110301 | 1400 | 981 | 782 | 0 | 351 | 57,6 | 0 | 0 | 286 | | | | | | |
| 850 | Gamesa | 1578 | Brotorp 1, Brotorp | F10g | 58/65 | 110301 | | 1306 | 1333 | 522 | 1278 | 73,7 | 74 | 82 | 4 | | | | | | |
| 850 | Gamesa | 1579 | Bondorlunda 1, Vadstena | D9c | 58/65 | 110301 | | 374 | 1861 | 813 | 2101 | 99,7 | 145 | 36 | 0 | | | | | | |
| 850 | Gamesa | 1580 | Bondorlunda 2, Vadstena | E8f | 58/65 | 110301 | | 385 | 1788 | 803 | 2026 | 99,7 | 140 | 36 | 0 | | | | | | |
| 850 | 200 Vestas | 693 | Nils, Almåsa, Almåsaberget | E19g | 52/55 | 021008 | 2162 | 1976 | 2024 | 785 | 2159 | 93,5 | 141 | 79 | 9 | | | | | | |
| 850 | 200 Vestas | 718 | Tomten flo, Gråstorp | C8d | 52/74 | 030630 | 1786 | 1498 | 1515 | 628 | 1708 | 92,1 | 122 | 75 | 1 | | | | | | |
| 850 | 200 Vestas | 740 | Östergården, Skara, Skänin | D8d | 52/74 | 031215 | 1650 | 1403 | 1398 | 658 | 1635 | 99,6 | 116 | 77 | 8 | | | | | | |
| 850 | 200 Vestas | 789 | Kroka 1, Söderåkra | G4b | 52/74 | 041128 | 1890 | 1312 | 1462 | 639 | 1534 | 98,3 | 99 | 78 | 62 | | | | | | |
| 900 | Neg Micon | 851 | OBV2, Hjällå, Hjo | E8a | 52/60 | 050726 | 1700 | 1398 | 1438 | 663 | 1544 | 98,6 | 102 | 74 | 0 | | | | | | |
| 900 | 200 NEG Micon | 482 | Äppelbovind ek.för, Hunnfl | E13a | 52/49 | 001217 | 1600 | 1578 | 1918 | 548 | 1847 | 94,4 | 151 | 86 | 2 | | | | | | |
| 900 | 200 NEG Micon | 483 | Klimpfjäll 1, Klimpfjäll | F23d | 52/49 | 010116 | | 1211 | 1295 | 301 | 1194 | 89 | 55 | 30 | 351 | | | | | | |
| 900 | 200 NEG Micon | 484 | Klimpfjäll 2, Klimpfjäll | F23d | 52/49 | 010116 | | 952 | 1081 | 462 | 1214 | 91,3 | 115 | 72 | 1 | | | | | | |
| 900 | 200 NEG Micon | 485 | Klimpfjäll 3, Klimpfjäll | F23d | 52/49 | 010116 | | 1181 | 1422 | 514 | 14 | | | | | | | | | | |

| Ny * | Effekt (kW) | | Fabrikat | Nr Anläggning | Placering | D/H I drift | Ber MWh | 2012 MWh | 2013 MWh | 2014 MWh | 12mån MWh | 12mån % | Månad MWh | Tid % | Hindertid (tim) | | | | | | |
|------|-------------|------|-----------------------------|---------------|-----------|-------------|---------|----------|----------|----------|-----------|---------|-----------|-------|-----------------|----|-----|-----|----|-----|----|
| | Hög | Låg | | | | | | | | | | | | | AHT | MS | YNS | OVS | PU | OPS | TF |
| 1800 | Vestas | 1447 | Stor-Rotliden D-02,Stor-Rot | I21e | 90/95 | 100813 | 5725 | 4857 | 6122 | 1475 | 5581 | 100 | 476 | 0 | | | | | | | |
| 1800 | Vestas | 1448 | Stor-Rotliden D-03,Stor-Rot | I21e | 90/95 | 100813 | 5725 | 5194 | 6436 | 1566 | 5813 | 100 | 490 | 0 | | | | | | | |
| 1800 | Vestas | 1453 | Stor-Rotliden D-08,Stor-Rot | I21e | 90/95 | 100729 | 5725 | 4478 | 5429 | 1332 | 4897 | 100 | 392 | 0 | | | | | | | |
| 1800 | Vestas | 1455 | Stor-Rotliden D-10,Stor-Rot | I21e | 90/95 | 100729 | 5725 | 5003 | 5773 | 1419 | 5217 | 100 | 447 | 0 | | | | | | | |
| 1800 | Vestas | 1456 | Östra Herrestad A-01,Östra | D2c | 90/80 | 101011 | 6333 | 6981 | 6644 | 2606 | 6697 | 100 | 628 | 0 | | | | | | | |
| 1800 | Vestas | 1457 | Östra Herrestad A-02,Östra | D2c | 90/80 | 101014 | 6333 | 6782 | 6393 | 2829 | 6854 | 100 | 619 | 0 | | | | | | | |
| 1800 | Vestas | 1458 | Östra Herrestad A-03,Östra | D2c | 90/80 | 101019 | 6333 | 6676 | 6383 | 2779 | 6746 | 100 | 631 | 0 | | | | | | | |
| 1800 | Vestas | 1459 | Östra Herrestad A-04,Östra | D2c | 90/80 | 101008 | 6333 | 6923 | 6235 | 2786 | 6642 | 100 | 649 | 0 | | | | | | | |
| 1800 | Vestas | 1460 | Östra Herrestad A-05,Östra | D2c | 90/80 | 101018 | 6333 | 6514 | 6484 | 2582 | 6587 | 100 | 521 | 0 | | | | | | | |
| 1800 | Vestas | 1461 | Östra Herrestad B-01,Östra | D2c | 90/80 | 101007 | 6333 | 7050 | 6683 | 2957 | 7061 | 100 | 661 | 0 | | | | | | | |
| 1800 | Vestas | 1462 | Östra Herrestad B-02,Östra | D2c | 90/80 | 101021 | 6333 | 6883 | 6619 | 2789 | 6916 | 100 | 540 | 0 | | | | | | | |
| 1800 | Vestas | 1463 | Östra Herrestad B-03,Östra | D2c | 90/80 | 101028 | 6333 | 6990 | 6677 | 2807 | 6939 | 100 | 622 | 0 | | | | | | | |
| 1800 | Vestas | 1464 | Östra Herrestad B-04,Östra | D2c | 90/80 | 101025 | 6333 | 6669 | 6279 | 2700 | 6604 | 100 | 623 | 0 | | | | | | | |
| 1800 | Vestas | 1550 | Sängsjön 1,Torvsele | H21e | 90/105 | 111030 | 5500 | 5273 | 6212 | 1856 | 6042 | 81,2 | 512 | 90 | 0 | | | | | | |
| 1800 | Vestas | 1551 | Sängsjön 2,Torvsele | H21e | 90/105 | 111030 | 5500 | 6278 | 7260 | 2090 | 6904 | 85,9 | 566 | 90 | 0 | | | | | | |
| 1800 | Vestas | 1552 | Sängsjön 3,Torvsele | H21e | 90/105 | 111030 | 5500 | 5509 | 6493 | 1760 | 6146 | 86,9 | 521 | 90 | 0 | | | | | | |
| 1800 | Vestas | 1712 | Vassmolösa 1,Vassmolösa | G4e | 100/95 | 120710 | 5100 | 521 | 5252 | 2072 | 5349 | 92,4 | 399 | 88 | 25 | | | | | | |
| 1800 | Vestas | 1713 | Vassmolösa 2,Vassmolösa | G4e | 100/95 | 120710 | 5100 | 501 | 5188 | 2041 | 5355 | 94,3 | 372 | 90 | 7 | | | | | | |
| 1800 | Vestas | 1714 | Vassmolösa 3,Vassmolösa | G4e | 100/95 | 120716 | 5100 | 470 | 4978 | 2020 | 5269 | 90,6 | 339 | 87 | 188 | | | | | | |
| 1800 | Vestas | 1715 | Vassmolösa 4,Vassmolösa | G4e | 100/95 | 120717 | 5100 | 505 | 4839 | 1946 | 5057 | 89,8 | 331 | 88 | 185 | | | | | | |
| 1800 | Vestas | 1716 | Vassmolösa 5,Vassmolösa | G4e | 100/95 | 120711 | 5100 | 474 | 4715 | 1949 | 4883 | 89,4 | 355 | 89 | 8 | | | | | | |
| 1800 | Vestas | 1724 | Högtjärnklocks Vindpark, H | G12h | 100/95 | 120905 | 5400 | | 6476 | 2415 | 6735 | 96,8 | 520 | 85 | 6 | | | | | | |
| 1800 | Vestas | 1725 | Högtjärnklocks Vindpark, A | G12h | 100/95 | 120908 | 5400 | | 6224 | 2318 | 6432 | 95,2 | 524 | 86 | 2 | | | | | | |
| 1800 | Vestas | 1726 | Högtjärnklocks Vindpark, H | G12h | 100/95 | 120905 | 5400 | | 6552 | 2415 | 6719 | 94,8 | 503 | 82 | 36 | | | | | | |
| 1800 | Vestas | 1727 | Högtjärnklocks Vindpark, R | G12h | 100/95 | 120904 | 5400 | | 6730 | 2285 | 6764 | 99,3 | 500 | 81 | 15 | | | | | | |
| 1800 | Vestas | 1728 | Högtjärnklocks Vindpark, T | G12h | 100/95 | 120912 | 5400 | | 6122 | 2260 | 6244 | 96,4 | 500 | 86 | 0 | | | | | | |
| 1800 | Vestas | 1729 | Högtjärnklocks Vindpark, D | G12h | 100/95 | 120710 | 5400 | | 6186 | 2241 | 6422 | 99,3 | 475 | 85 | 19 | | | | | | |
| 1800 | Vestas | 1730 | Högtjärnklocks Vindpark, Å | G12h | 100/95 | 120712 | 5400 | | 6839 | 2432 | 6938 | 98,7 | 535 | 86 | 4 | | | | | | |
| 1800 | Vestas | 1731 | Rockneby 1,Rockneby | G5b | 100/95 | 120731 | 5200 | 1651 | 4691 | 1686 | 4666 | 97,4 | 336 | 88 | 6 | | | | | | |
| 1800 | Vestas | 1732 | Rockneby 2,Rockneby | G5b | 100/95 | 120731 | 5200 | 1691 | 4771 | 1726 | 4750 | 97,9 | 350 | 89 | 8 | | | | | | |
| 1800 | Vestas | 1733 | Rockneby 3,Rockneby | G5b | 100/95 | 120801 | 5200 | 1636 | 4602 | 1677 | 4590 | 97 | 343 | 86 | 24 | | | | | | |
| 1800 | Vestas | 1734 | Rockneby 4,Rockneby | G5b | 100/95 | 120813 | 5200 | 1608 | 4554 | 1705 | 4554 | 98,4 | 338 | 88 | 12 | | | | | | |
| 1800 | Vestas | 1735 | Rockneby 5,Rockneby | G5b | 100/95 | 120814 | 5200 | 1513 | 4650 | 1753 | 4649 | 97,8 | 341 | 89 | 5 | | | | | | |
| 1800 | Vestas | 1850 | Strömmestad 1,Strömmestad | E8c | 100/95 | 131101 | 6000 | | 1419 | 1940 | 3358 | 95,1 | 428 | 85 | 2 | | | | | | |
| 1800 | Vestas | 1851 | Strömmestad 2,Strömmestad | E8c | 100/95 | 131101 | 6000 | | 1350 | 1979 | 3330 | 99,1 | 397 | 84 | 6 | | | | | | |
| 2000 | Vestas | 738 | Skåls Näs, Slitevind XXIX,S | I5f | 80/78 | 031214 | 6000 | 5414 | 5018 | 2235 | 5609 | 99,4 | 421 | 91 | 5 | | | | | | |
| 2000 | Enercon | 774 | Orup 1,Rolsberga | D2g | 70/65 | 041201 | 3500 | 3329 | 3236 | 1664 | 3680 | 75,1 | 286 | 93 | 2 | | | | | | |
| 2000 | Enercon | 821 | Långå 1,Långå | D17e | 70/85 | 051007 | 5400 | 3632 | 3981 | 1408 | 4101 | 93,7 | 282 | 91 | 5 | | | | | | |
| 2000 | Enercon | 822 | Långå 2,Långå | D17e | 70/85 | 051017 | 5400 | 3383 | 3102 | 1168 | 3243 | 85,3 | 302 | 92 | 5 | | | | | | |
| 2000 | Enercon | 823 | Långå 3,Långå | D17e | 70/85 | 051024 | 5400 | 3537 | 3854 | 1291 | 3896 | 93,9 | 264 | 89 | 22 | | | | | | |
| 2000 | Enercon | 824 | Långå 4,Långå | D17e | 70/85 | 051031 | 5400 | 3882 | 4225 | 1251 | 4086 | 93 | 297 | 89 | 14 | | | | | | |
| 2000 | Enercon | 825 | Långå 5,Långå | D17e | 70/85 | 051108 | 5400 | 3780 | 3970 | 1461 | 4152 | 93,1 | 300 | 92 | 5 | | | | | | |
| 2000 | Enercon | 845 | Odarslöv 1,Eslöv | C2f | 70/64 | 060720 | 4900 | 3750 | 4081 | 2081 | 4618 | 97,3 | 383 | 94 | 0 | | | | | | |
| 2000 | Enercon | 846 | Odarslöv 2,Eslöv | C2i | 70/64 | 060720 | 4900 | 4342 | 3948 | 1895 | 4340 | 93,4 | 295 | 76 | 137 | | | | | | |
| 2000 | Enercon | 847 | Odarslöv 3,Eslöv | C2i | 70/64 | 060720 | 4900 | 4116 | 3872 | 1917 | 4294 | 98,1 | 345 | 95 | 1 | | | | | | |
| 2000 | Enercon | 856 | Värlinge 1,Stehag | C2i | 82/78 | 070119 | 5500 | 4537 | 4438 | 2266 | 5118 | 92,7 | 420 | 92 | 43 | | | | | | |
| 2000 | Enercon | 857 | Värlinge 2,Stehag | C2i | 82/78 | 070309 | 5500 | 3916 | 4337 | 2127 | 4882 | 92,8 | 400 | 92 | 43 | | | | | | |
| 2000 | Enercon | 868 | Stora Istad 1,Stora Istad | H5a | 82/78 | 070501 | 5500 | 5557 | 5404 | 2198 | 5594 | 95,2 | 339 | 92 | 39 | | | | | | |
| 2000 | Enercon | 869 | Stora Istad 2,Stora Istad | H5a | 82/78 | 070501 | 5500 | 4896 | 4914 | 2107 | 5439 | 95,3 | 315 | 96 | 11 | | | | | | |
| 2000 | Enercon | 870 | Stora Istad 3,Stora Istad | H5a | 82/78 | 070501 | 5500 | 4739 | 5036 | 2038 | 5219 | 93 | 321 | 95 | 18 | | | | | | |
| 2000 | Enercon | 871 | Stora Istad 4,Stora Istad | H5a | 82/78 | 070501 | 5500 | 4844 | 4924 | 1987 | 5026 | 91,9 | 320 | 97 | 0 | | | | | | |
| 2000 | Enercon | 872 | Stora Istad 5,Stora Istad | H5a | 82/78 | 070501 | 5500 | 4911 | 4728 | 2086 | 5144 | 80 | 314 | 98 | 0 | | | | | | |
| 2000 | Vestas | 878 | Hornberget 1,Aspliden | I23e | 90/80 | 070111 | 6000 | 4628 | 6108 | 1783 | 6031 | 98,8 | 529 | 93 | 0 | | | | | | |
| 2000 | Vestas | 879 | Hornberget 2,Aspliden | I23e | 90/80 | 070111 | 6000 | 5253 | 5662 | 1515 | 5515 | 97,7 | 487 | 87 | 0 | | | | | | |
| 2000 | Vestas | 880 | Hornberget 3,Aspliden | I23e | 90/80 | 070111 | 6000 | 6753 | 6928 | 1674 | 6300 | 96,5 | 649 | 92 | 0 | | | | | | |
| 2000 | Vestas | 881 | Hornberget 4,Aspliden | I23e | 90/80 | 070111 | 6000 | 4514 | 7733 | 1684 | 6856 | 96,5 | 559 | 82 | 0 | | | | | | |
| 2000 | Vestas | 882 | Hornberget 5,Aspliden | I23e | 90/80 | 070111 | 6000 | 5226 | 5198 | 1298 | 4539 | 86,8 | 582 | 94 | 0 | | | | | | |
| 2000 | Vestas | 939 | Lynghy 2, Rose-Marie G,Ly | D2i | 90/95 | 071201 | 5200 | 4964 | 4492 | 1878 | 4708 | 95,2 | 250 | 67 | 121 | | | | | | |
| 2000 | Enercon | 957 | Entorp 1,Ardala | D8d | 82/78 | 071126 | 4400 | 4005 | 3801 | 1626 | 4311 | 97,2 | 304 | 94 | 10 | | | | | | |
| 2000 | Enercon | 958 | Entorp 2,Ardala | D8d | 82/78 | 071126 | 4400 | 3808 | 3550 | 1681 | 4187 | 96,3 | 316 | 94 | 7 | | | | | | |
| 2000 | Vestas | 959 | Långås vindpark 1,Långnäs | B5f | 90/80 | 071214 | 5082 | 5176 | 4829 | 2185 | 5377 | 93,6 | 340 | 79 | 57 | | | | | | |
| 2000 | Vestas | 960 | Långås vindpark 2,Långnäs | B5f | 90/80 | 071214 | 5150 | 5341 | 4951 | 2246 | 5623 | 95,8 | 343 | 84 | 11 | | | | | | |
| 2000 | Vestas | 961 | Långås vindpark 3,Långnäs | B5f | 90/80 | 071214 | 4995 | 4928 | 4661 | 2184 | 5303 | 96,2 | 352 | 84 | 10 | | | | | | |
| 2000 | Vestas | 962 | Långås vindpark 4,Långnäs | B5f | 90/80 | 071214 | 5091 | 5260 | 4810 | 2186 | 5435 | 95,6 | 346 | 84 | 10 | | | | | | |
| 2000 | Enercon | 966 | Skörstorp 1,Skörstorp | D7h | 82/98 | 080118 | 5500 | 5523 | 5343 | 2225 | 5849 | 95,9 | 394 | 90 | 43 | | | | | | |
| 2000 | Enercon | 967 | Skörstorp 2,Skörstorp | D7h | 82/98 | 080118 | 5500 | 5319 | 5252 | 2290 | 5850 | 97,3 | 386 | 92 | 28 | | | | | | |
| 2000 | Enercon | 968 | Skörstorp 3,Skörstorp | D7h | 82/98 | 080118 | 5500 | 5385 | 5192 | 2363 | 5879 | 92,1 | 404 | 92 | 28 | | | | | | |
| 2000 | Vestas | 969 | Munkagård 1,Tvååker | B5f | 90/80 | 061220 | 5300 | 5791 | 5977 | 2561 | 6710 | 97,3 | 419 | 87 | 1 | | | | | | |
| 2000 | Vestas | 970 | Munkagård 2,Tvååker | B5f | 90/80 | 061220 | 5300 | 6117 | 5623 | 2591 | 6525 | 98,1 | 409 | 88 | 1 | | | | | | |
| 2000 | Vestas | 971 | Munkagård 3,Tvååker | B5f | 90/80 | 061220 | 5300 | 5976 | 5728 | 2244 | 6188 | 94,7 | 391 | 82 | 59 | | | | | | |
| 2000 | Enercon | 972 | Sundsholm,Luttra | D7h | 82/79 | 071219 | 4300 | 4468 | 4274 | 2013 | 4879 | 95,5 | 377 | 96 | 7 | | | | | | |
| 2000 | Enercon | 987 | Odarslöv 4,Lund | C2f | 71/63 | 080714 | 5400 | 4283 | 4164 | 2206 | 4882 | 98 | 460 | 98 | 0 | | | | | | |
| 2000 | Enercon | 988 | Univ. Wind Odarslöv 5,Lun | C2f | 71/63 | 080714 | 54 | | | | | | | | | | | | | | |

| Ny * | Effekt (kW) | | Fabrikat | Nr Anläggning | Placering | D/H | I drift | Ber MWh | 2012 MWh | 2013 MWh | 2014 MWh | 12mån MWh | 12mån % | Månad MWh | Tid % | Hindertid (tim) | | | | | |
|------|-------------|------|------------------------------|---------------|-----------|--------|---------|---------|----------|----------|----------|-----------|---------|-----------|-------|-----------------|-------|-----|-----|----|-----|
| | Hög | Låg | | | | | | | | | | | | | | Benämning, Ort | Karta | (m) | AHT | MS | YNS |
| 2000 | Vestas | 1236 | Ulvstorp, Emil,Flakeberg G | C8e | 90/95 | 100601 | 5200 | 5150 | 5011 | 2096 | 5567 | 78,5 | 407 | 86 | 63 | | | | | | |
| 2000 | Enercon | 1237 | Ringsjö Vind Brostorp 3,Sn | D2g | 82/98 | 100501 | 5000 | 5476 | 5033 | 2372 | 5576 | 98,8 | 442 | 96 | 0 | | | | | | |
| 2000 | Enercon | 1238 | Solberga 1,Korsberga | E8a | 82/108 | 100111 | 5300 | 5700 | 5406 | 2345 | 6110 | 98,3 | 427 | 96 | 5 | | | | | | |
| 2000 | Enercon | 1239 | Åsperöd 1,Åsperöd | D2e | 82/78 | 100601 | 5400 | 4402 | 4256 | 1949 | 4507 | 90,6 | 487 | 96 | 8 | | | | | | |
| 2000 | Vestas | 1240 | Lårstad 1,Motala | F8g | 90/90 | 100517 | 5400 | 6530 | 6027 | 2444 | 6575 | 99,2 | 463 | 85 | 1 | | | | | | |
| 2000 | Vestas | 1241 | Lårstad 2,Motala | F8g | 90/90 | 100524 | 5400 | 6508 | 5976 | 2448 | 6560 | 99,5 | 456 | 85 | 1 | | | | | | |
| 2000 | Vestas | 1242 | Västraby V90 NO,Västraby | D2g | 90/78 | 100601 | 5400 | 5820 | 5230 | 2551 | 5798 | 96,4 | 542 | 89 | 11 | | | | | | |
| 2000 | Vestas | 1243 | Lynghygård 4, Ingeborg,Lyn | D2i | 90/95 | 100701 | 5200 | 5257 | 4722 | 2026 | 4939 | 93,8 | 339 | 80 | 23 | | | | | | |
| 2000 | Enercon | 1245 | Nårefors 1,Järpås | C8f | 82/98 | 100710 | 5300 | 5797 | 5547 | 2265 | 6027 | 98,9 | 423 | 95 | 4 | | | | | | |
| 2000 | Enercon | 1246 | Nårefors 2,Järpås | C8f | 82/98 | 100710 | 5300 | 5780 | 5553 | 2338 | 6123 | 98,5 | 410 | 88 | 51 | | | | | | |
| 2000 | Vestas | 1248 | Tumleberg 4,Tumleberg | C8b | 90/105 | 090901 | 5400 | 5308 | 4967 | 2095 | 5501 | 88,1 | 380 | 84 | 3 | | | | | | |
| 2000 | Vestas | 1249 | Tumleberg 5,Tumleberg | C8b | 90/105 | 090901 | 5400 | 5079 | 4838 | 1997 | 5268 | 88,6 | 377 | 83 | 15 | | | | | | |
| 2000 | Vestas | 1250 | Jordberga, AT1,Klagstorp | C1i | 90/80 | 100506 | 6300 | 7436 | 7055 | 2522 | 6987 | 98,6 | | | | | | | | | |
| 2000 | Vestas | 1251 | Jordberga, AT2,Klagstorp | C1i | 90/80 | 100506 | 6300 | 6403 | 6399 | 2318 | 6484 | 96,1 | | | | | | | | | |
| 2000 | Vestas | 1252 | Jordberga, AT3,Klagstorp | C1i | 90/80 | 100506 | 6300 | 6963 | 6635 | 3148 | 7288 | 98 | 708 | 92 | 2 | | | | | | |
| 2000 | Vestas | 1254 | Nås Drift AB, Backgården,N | D7h | 90/105 | 100720 | 5400 | 5783 | 5527 | 2447 | 6202 | 89,7 | 450 | 85 | 2 | | | | | | |
| 2000 | Vestas | 1255 | Nås Drift AB, Björstorp,Vart | D7h | 90/105 | 100720 | 5400 | 5902 | 5691 | 2497 | 6401 | 89,6 | 462 | 84 | 15 | | | | | | |
| 2000 | Enercon | 1256 | Åsperöd 2,Åsperöd | D2e | 82/78 | 100601 | 5400 | 4223 | 4514 | 2125 | 4903 | 94,3 | 493 | 95 | 20 | | | | | | |
| 2000 | Enercon | 1258 | Ramdala 1, Julia,Ramdala | F3f | 82/98 | 100901 | 5400 | 5471 | 5667 | 2366 | 5977 | 98,2 | 465 | 88 | 71 | | | | | | |
| 2000 | Enercon | 1259 | Ramdala 2, Bondevind,Ra | F3f | 82/98 | 100901 | 5400 | 5564 | 5628 | 2356 | 5927 | 98,3 | 478 | 98 | 5 | | | | | | |
| 2000 | Enercon | 1260 | Skarstad,Skarstad | C8c | 82/98 | 100618 | 5200 | 5897 | 5596 | 2274 | 6082 | 98,1 | 414 | 92 | 16 | | | | | | |
| 2000 | Enercon | 1261 | Stockebäck,Lundsbrunn | D8g | 82/108 | 100618 | 5200 | 5571 | 5360 | 2218 | 5998 | 98,7 | 395 | 95 | 2 | | | | | | |
| 2000 | Vestas | 1262 | Havnäs Vindkraftpark D1,H | F21c | 90/95 | 100705 | 5337 | 6233 | 6521 | 2778 | 7293 | 99,3 | 530 | 89 | 0 | | | | | | |
| 2000 | Vestas | 1263 | Havnäs Vindkraftpark D2,H | F21c | 90/95 | 100705 | 5337 | 5605 | 5865 | 2531 | 6574 | 98,9 | 482 | 87 | 3 | | | | | | |
| 2000 | Vestas | 1264 | Havnäs Vindkraftpark D3,H | F21c | 90/95 | 100705 | 5337 | 5664 | 6012 | 2560 | 6734 | 99,5 | 463 | 87 | 1 | | | | | | |
| 2000 | Vestas | 1265 | Havnäs Vindkraftpark D4,H | F21c | 90/95 | 100705 | 5337 | 5561 | 5828 | 2468 | 6501 | 98,8 | 458 | 87 | 5 | | | | | | |
| 2000 | Vestas | 1266 | Havnäs Vindkraftpark D5,H | F21c | 90/95 | 100705 | 5337 | 5543 | 5837 | 2538 | 6615 | 99,2 | 436 | 86 | 12 | | | | | | |
| 2000 | Vestas | 1267 | Havnäs Vindkraftpark D6,H | F21c | 90/95 | 100705 | 5337 | 5550 | 6224 | 1651 | 5975 | 92,4 | 523 | 88 | 0 | | | | | | |
| 2000 | Vestas | 1268 | Havnäs Vindkraftpark D7,H | F21c | 90/95 | 100705 | 5337 | 5942 | 6963 | 2319 | 7096 | 99,1 | 573 | 87 | 5 | | | | | | |
| 2000 | Vestas | 1269 | Havnäs Vindkraftpark D8,H | F21c | 90/95 | 100705 | 5337 | 5722 | 6695 | 2305 | 6907 | 98,8 | 569 | 88 | 0 | | | | | | |
| 2000 | Vestas | 1270 | Havnäs Vindkraftpark D9,H | F21c | 90/95 | 100705 | 5337 | 5472 | 5985 | 2392 | 6517 | 99,3 | 485 | 89 | 0 | | | | | | |
| 2000 | Vestas | 1271 | Havnäs Vindkraftpark D10, | F21c | 90/95 | 100705 | 5337 | 5407 | 6315 | 1964 | 6291 | 98,9 | 508 | 86 | 16 | | | | | | |
| 2000 | Vestas | 1272 | Havnäs Vindkraftpark D11, | F21f | 90/95 | 100705 | 5337 | 5924 | 6531 | 2128 | 6578 | 98 | 499 | 89 | 5 | | | | | | |
| 2000 | Vestas | 1273 | Havnäs Vindkraftpark D12, | F21f | 90/95 | 100705 | 5337 | 5645 | 6733 | 2348 | 6965 | 98,7 | 513 | 90 | 10 | | | | | | |
| 2000 | Vestas | 1274 | Havnäs Vindkraftpark D13, | F21c | 90/95 | 100705 | 5337 | 5986 | 6668 | 2164 | 6743 | 99,1 | 524 | 91 | 0 | | | | | | |
| 2000 | Vestas | 1275 | Havnäs Vindkraftpark D14, | F21f | 90/95 | 100705 | 5337 | 5238 | 6115 | 2018 | 6228 | 99,4 | 466 | 89 | 0 | | | | | | |
| 2000 | Vestas | 1277 | Havnäs Vindkraftpark D16, | F21c | 90/95 | 100705 | 5337 | 6176 | 7189 | 2212 | 7109 | 98,7 | 556 | 91 | 0 | | | | | | |
| 2000 | Vestas | 1279 | Havnäs Vindkraftpark D18, | F21c | 90/95 | 100705 | 5337 | 5893 | 6895 | 1882 | 6532 | 97,8 | 502 | 85 | 31 | | | | | | |
| 2000 | Vestas | 1280 | Havnäs Vindkraftpark D19, | F21c | 90/95 | 100705 | 5337 | 5751 | 6779 | 1949 | 6548 | 99,1 | 559 | 90 | 0 | | | | | | |
| 2000 | Vestas | 1281 | Havnäs Vindkraftpark D20, | F21c | 90/95 | 100705 | 5337 | 6239 | 7240 | 2066 | 7006 | 98,9 | 582 | 89 | 0 | | | | | | |
| 2000 | Vestas | 1283 | Havnäs Vindkraftpark E1,H | F21c | 90/95 | 100705 | 5337 | 5913 | 6359 | 2289 | 6566 | 99,5 | 477 | 91 | 0 | | | | | | |
| 2000 | Vestas | 1284 | Havnäs Vindkraftpark E2,H | F21c | 90/95 | 100705 | 5337 | 5233 | 5430 | 2063 | 5734 | 98,9 | 418 | 87 | 12 | | | | | | |
| 2000 | Vestas | 1285 | Havnäs Vindkraftpark E3,H | F21c | 90/95 | 100705 | 5337 | 4890 | 5224 | 1906 | 5459 | 99,4 | 413 | 88 | 4 | | | | | | |
| 2000 | Vestas | 1286 | Havnäs Vindkraftpark E4,H | F21c | 90/95 | 100705 | 5337 | 4733 | 4919 | 1871 | 5183 | 99 | 389 | 88 | 1 | | | | | | |
| 2000 | Vestas | 1287 | Havnäs Vindkraftpark E5,H | F21c | 90/95 | 100705 | 5337 | 4994 | 5335 | 1838 | 5460 | 99,5 | 408 | 89 | 0 | | | | | | |
| 2000 | Vestas | 1288 | Havnäs Vindkraftpark E6,H | F21c | 90/95 | 100705 | 5337 | 5296 | 5748 | 1741 | 5578 | 99,6 | 395 | 88 | 9 | | | | | | |
| 2000 | Vestas | 1289 | Havnäs Vindkraftpark E7,H | F21c | 90/95 | 100705 | 5337 | 5392 | 5913 | 1994 | 5970 | 99,1 | 434 | 89 | 12 | | | | | | |
| 2000 | Vestas | 1290 | Havnäs Vindkraftpark E8,H | F21c | 90/95 | 100705 | 5337 | 5104 | 5585 | 1657 | 5417 | 99,1 | 396 | 88 | 11 | | | | | | |
| 2000 | Vestas | 1291 | Havnäs Vindkraftpark E9,H | F21c | 90/95 | 100705 | 5337 | 4637 | 5053 | 1630 | 5068 | 99,6 | 380 | 87 | 16 | | | | | | |
| 2000 | Vestas | 1292 | Havnäs Vindkraftpark E10, | F21c | 90/95 | 100705 | 5337 | 4676 | 5074 | 1585 | 4983 | 99,2 | 377 | 87 | 14 | | | | | | |
| 2000 | Vestas | 1293 | Havnäs Vindkraftpark E11, | F21c | 90/95 | 100705 | 5337 | 5033 | 5572 | 1830 | 5592 | 98,8 | 404 | 84 | 55 | | | | | | |
| 2000 | Vestas | 1294 | Havnäs Vindkraftpark F1,H | F21c | 90/95 | 100705 | 5337 | 5748 | 6275 | 1912 | 5985 | 99 | 489 | 90 | 1 | | | | | | |
| 2000 | Vestas | 1295 | Havnäs Vindkraftpark F2,H | F21c | 90/95 | 100705 | 5337 | 5966 | 6631 | 1915 | 6181 | 99,4 | 500 | 88 | 3 | | | | | | |
| 2000 | Vestas | 1296 | Havnäs Vindkraftpark F3,H | F21c | 90/95 | 100705 | 5337 | 4995 | 5555 | 1652 | 5255 | 99,1 | 430 | 88 | 8 | | | | | | |
| 2000 | Vestas | 1297 | Havnäs Vindkraftpark F4,H | F21c | 90/95 | 100705 | 5337 | 4914 | 5679 | 1662 | 5352 | 99,5 | 425 | 88 | 2 | | | | | | |
| 2000 | Vestas | 1298 | Havnäs Vindkraftpark F5,H | F21c | 90/95 | 100705 | 5337 | 4671 | 5331 | 1610 | 5088 | 99,1 | 434 | 88 | 1 | | | | | | |
| 2000 | Vestas | 1299 | Havnäs Vindkraftpark F6,H | F21c | 90/95 | 100705 | 5337 | 5035 | 5850 | 1652 | 5464 | 99,5 | 453 | 89 | 1 | | | | | | |
| 2000 | Vestas | 1300 | Havnäs Vindkraftpark F7,H | F21c | 90/95 | 100705 | 5337 | 5024 | 5718 | 1643 | 5342 | 99,4 | 438 | 87 | 8 | | | | | | |
| 2000 | Vestas | 1301 | Havnäs Vindkraftpark F8,H | F21c | 90/95 | 100705 | 5337 | 5724 | 6349 | 2004 | 6147 | 99,1 | 510 | 89 | 1 | | | | | | |
| 2000 | Vestas | 1302 | Havnäs Vindkraftpark F9,H | F21c | 90/95 | 100705 | 5337 | 4919 | 5630 | 1642 | 5359 | 99,4 | 451 | 88 | 1 | | | | | | |
| 2000 | Vestas | 1303 | Havnäs Vindkraftpark F10, | F21c | 90/95 | 100705 | 5337 | 4746 | 5436 | 1605 | 5163 | 98,6 | 452 | 88 | 1 | | | | | | |
| 2000 | Vestas | 1304 | Havnäs Vindkraftpark F11, | F21c | 90/95 | 100705 | 5337 | 4751 | 5421 | 1506 | 5084 | 99,6 | 415 | 88 | 0 | | | | | | |
| 2000 | Vestas | 1305 | Havnäs Vindkraftpark F12, | F21c | 90/95 | 100705 | 5337 | 5408 | 6256 | 1733 | 5812 | 99,6 | 501 | 88 | 1 | | | | | | |
| 2000 | Vestas | 1306 | Havnäs Vindkraftpark F13, | F21c | 90/95 | 100705 | 5337 | 5523 | 6348 | 1695 | 5850 | 99,4 | 499 | 88 | 1 | | | | | | |
| 2000 | Vestas | 1307 | Havnäs Vindkraftpark F14, | F21c | 90/95 | 100705 | 5337 | 5421 | 6284 | 1777 | 5912 | 99,4 | 516 | 88 | 1 | | | | | | |
| 2000 | Vestas | 1308 | Havnäs Vindkraftpark F15, | F21c | 90/95 | 100705 | 5337 | 5272 | 6305 | 1763 | 5905 | 99 | 513 | 87 | 1 | | | | | | |
| 2000 | Vestas | 1309 | Havnäs Vindkraftpark F16, | F21c | 90/95 | 100705 | 5337 | 5429 | 6309 | 1712 | 5831 | 99,2 | 505 | 86 | 2 | | | | | | |
| 2000 | Enercon | 1310 | Långå 6,Långå | D17e | 82/98 | 100501 | 4755 | 5099 | 2016 | 5436 | 93,7 | 356 | 93 | 6 | | | | | | | |
| 2000 | Enercon | 1311 | Långå 7,Långå | D17e | 82/98 | 100501 | 4354 | 5038 | 1889 | 5292 | 92,3 | 357 | 91 | 14 | | | | | | | |
| 2000 | Vestas | 1313 | Källeberg 1,Källeberg | D7h | 90/105 | 100701 | 5400 | 5396 | 5325 | 2671 | 6402 | 90,9 | 459 | 84 | 15 | | | | | | |
| 2000 | Vestas | 1314 | Källeberg 2,Källeberg | D7h | 90/105 | 100701 | 540 | | | | | | | | | | | | | | |

| Ny * | Effekt (kW) | | Fabrikat | Nr Anläggning | Placering | D/H | I drift | Ber MWh | 2012 MWh | 2013 MWh | 2014 MWh | 12mån MWh | 12mån % | Månad MWh | Tid % | Hindertid (tim) | | | | | | |
|------|-------------|------|------------------------------|---------------|-----------|--------|---------|---------|----------|----------|----------|-----------|---------|-----------|-------|-----------------|-------|-----|-----|----|-----|-----|
| | Hög | Låg | | | | | | | | | | | | | | Benämning, Ort | Karta | (m) | AHT | MS | YNS | OVS |
| 2000 | Vestas | 1349 | Bliekevare 12,Norråker | F22f | 90/80 | 081103 | 4683 | 3577 | 4352 | 848 | 3817 | 99,4 | 299 | 72 | 5 | | | | | | | |
| 2000 | Vestas | 1350 | Bliekevare 13,Norråker | F22f | 90/80 | 081103 | 5597 | 4674 | 5371 | 1210 | 4668 | 92,2 | 384 | 74 | 22 | | | | | | | |
| 2000 | Vestas | 1351 | Bliekevare 14,Norråker | F22f | 90/80 | 081103 | 5696 | 4258 | 4938 | 997 | 4226 | 94,5 | 337 | 72 | 10 | | | | | | | |
| 2000 | Vestas | 1352 | Bliekevare 15,Norråker | F22f | 90/80 | 081103 | 5733 | 4755 | 5536 | 1362 | 5079 | 97,6 | 413 | 80 | 2 | | | | | | | |
| 2000 | Vestas | 1353 | Bliekevare 16,Norråker | F22f | 90/80 | 081103 | 5127 | 3874 | 4650 | 1117 | 4256 | 95,4 | 377 | 90 | 0 | | | | | | | |
| 2000 | Vestas | 1354 | Bliekevare 17,Norråker | F22f | 90/80 | 101001 | 4972 | 4009 | 4885 | 1095 | 4369 | 99 | 383 | 77 | 5 | | | | | | | |
| 2000 | Vestas | 1356 | Strömstad, Neanberg 1 Nor | A9i | 90/95 | 101201 | 5500 | 5901 | 5856 | 2455 | 6632 | 98,4 | 452 | 84 | 3 | | | | | | | |
| 2000 | Vestas | 1357 | Strömstad, Neanberg 2 Mitt | A9i | 90/95 | 101201 | 5500 | 5356 | 5371 | 2262 | 6093 | 98,2 | 425 | 83 | 3 | | | | | | | |
| 2000 | Vestas | 1358 | Strömstad, Neanberg 3 Syd | A9i | 90/95 | 101201 | 5500 | 5742 | 5696 | 2423 | 6477 | 98,4 | 444 | 84 | 5 | | | | | | | |
| 2000 | Vestas | 1360 | Brasnaviken, Pellekulla 1,F | E8g | 90/105 | 101215 | 5200 | 6736 | 6265 | 2850 | 7214 | 99,1 | 482 | 84 | 20 | | | | | | | |
| 2000 | Vestas | 1361 | Brasnaviken, Pellekulla 2,F | E8g | 90/105 | 101215 | 5200 | 6311 | 5710 | 2672 | 6717 | 99,7 | 436 | 87 | 0 | | | | | | | |
| 2000 | Enercon | 1362 | Prässeberg 1 Mitt, Lilla Ede | B8c | 82/98 | 100901 | 5500 | 4987 | 4949 | 1839 | 5170 | 97,9 | 352 | 96 | 2 | | | | | | | |
| 2000 | Enercon | 1363 | Prässeberg 2 Väst, Lilla Ed | B8c | 82/98 | 100901 | 5500 | 4602 | 4612 | 1790 | 4918 | 97,7 | 330 | 96 | 0 | | | | | | | |
| 2000 | Enercon | 1364 | Prässeberg 3 Ost, Lilla Edet | B8c | 82/98 | 100901 | 5500 | 4447 | 4361 | 1671 | 4563 | 95,9 | 312 | 97 | 2 | | | | | | | |
| 2000 | Vestas | 1365 | Topperyd 1,Topperyd | E6h | 90/105 | 101201 | 5200 | 5656 | 5485 | 2316 | 6068 | 99 | 399 | 87 | 31 | | | | | | | |
| 2000 | Vestas | 1366 | Topperyd 2,Topperyd | E6h | 90/105 | 101201 | 5200 | 5446 | 5381 | 2307 | 5944 | 99,4 | 417 | 91 | 0 | | | | | | | |
| 2000 | Vestas | 1367 | Topperyd 4,Topperyd | E6h | 90/105 | 101201 | 5200 | 5489 | 5350 | 2244 | 5886 | 98,6 | 416 | 90 | 0 | | | | | | | |
| 2000 | Enercon | 1368 | Skånings Åsaka 1,Skånings | D8d | 82/98 | 100820 | 5000 | 5063 | 4831 | 2142 | 5577 | 99,1 | 387 | 95 | 8 | | | | | | | |
| 2000 | Enercon | 1369 | Skånings Åsaka 2,Skånings | D8d | 82/98 | 100820 | 5000 | 4694 | 4541 | 2007 | 5172 | 98,7 | 351 | 95 | 5 | | | | | | | |
| 2000 | Enercon | 1370 | Skånings Åsaka 3,Skånings | D8d | 82/98 | 100820 | 5000 | 4900 | 4689 | 2100 | 5365 | 97,8 | 377 | 95 | 4 | | | | | | | |
| 2000 | Vestas | 1375 | Mossebol 1,Erikstad | C9a | 90/105 | 110301 | 5500 | 5794 | 5561 | 2269 | 6054 | 77,8 | 436 | 80 | 6 | | | | | | | |
| 2000 | Vestas | 1376 | Fågelbacka 1,Erikstad | C9a | 90/105 | 110301 | 5559 | 5355 | 2151 | 5763 | 78,1 | 402 | 79 | 13 | | | | | | | | |
| 2000 | Vestas | 1377 | Fågelbacka 2,Erikstad | C9a | 90/105 | 110301 | 5487 | 5277 | 2050 | 5570 | 73,7 | 421 | 80 | 4 | | | | | | | | |
| 2000 | Vestas | 1378 | Kråkedalen 1,Erikstad | C9a | 90/105 | 110301 | 5778 | 5602 | 2283 | 6079 | 80,3 | 448 | 79 | 12 | | | | | | | | |
| 2000 | Vestas | 1379 | Kråkedalen 2,Erikstad | C9a | 90/105 | 110301 | 5573 | 5494 | 2297 | 5987 | 77,1 | 447 | 80 | 14 | | | | | | | | |
| 2000 | Vestas | 1380 | Bäcken,Erikstad | C9a | 90/105 | 110301 | 6320 | 6140 | 2523 | 6617 | 78,6 | 488 | 82 | 1 | | | | | | | | |
| 2000 | Enercon | 1381 | Rodovålen 4,Vemhån | E17a | 82/98 | 100608 | 6000 | 6116 | 5997 | 2236 | 6145 | 94,8 | 398 | 88 | 60 | | | | | | | |
| 2000 | Enercon | 1382 | Rodovålen 5,Vemhån | E17a | 82/98 | 100608 | 6000 | 6171 | 6637 | 2153 | 6538 | 92 | 356 | 82 | 111 | | | | | | | |
| 2000 | Enercon | 1383 | Rodovålen 6,Vemhån | E17a | 82/98 | 100608 | 6000 | 6080 | 6360 | 2393 | 6523 | 95,3 | 437 | 81 | 87 | | | | | | | |
| 2000 | Vestas | 1387 | Långberget 1,Arbrå | G15f | 90/105 | 110201 | 5670 | 6198 | 6800 | 2291 | 6878 | 90,5 | 513 | 87 | 66 | | | | | | | |
| 2000 | Vestas | 1388 | Långberget 2,Arbrå | G15c | 90/105 | 110201 | 5670 | 5372 | 6060 | 2050 | 6104 | 90,3 | 454 | 86 | 70 | | | | | | | |
| 2000 | Vestas | 1389 | Långberget 3,Arbrå | G15f | 90/105 | 110201 | 5670 | 5320 | 6228 | 2083 | 6385 | 89,7 | 472 | 84 | 65 | | | | | | | |
| 2000 | Enercon | 1390 | Söderbodane 2,Söderboda | C9g | 82/108 | 110107 | 4750 | 5109 | 4585 | 1768 | 4902 | 99 | 338 | 95 | 0 | 9 | | | | | | |
| 2000 | Vestas | 1395 | Herrberga 1,Mjölby | F8d | 90/105 | 110228 | 5200 | 5594 | 5319 | 640 | 4266 | 99,3 | | | | | | | | | | |
| 2000 | Vestas | 1396 | Herrberga 2,Mjölby | F8d | 90/105 | 110228 | 5200 | 5485 | 5107 | 616 | 4063 | 97,9 | | | | | | | | | | |
| 2000 | Vestas | 1397 | Herrberga 3,Mjölby | F8d | 90/105 | 110228 | 5200 | 5447 | 5040 | 603 | 4047 | 98,2 | | | | | | | | | | |
| 2000 | Vestas | 1398 | OVA Vind 3,Lundsbrunn | D8g | 90/90 | 101118 | 5000 | 5741 | 5599 | 1938 | 5938 | 98 | 430 | 84 | 0 | | | | | | | |
| 2000 | Vestas | 1399 | PRA A01,Lilla Edet | B8c | 90/105 | 110301 | 5726 | 6252 | 6170 | 2444 | 6619 | 97,4 | 460 | 87 | 20 | | | | | | | |
| 2000 | Vestas | 1400 | PRA A02,Lilla Edet | B8c | 90/105 | 110301 | 5726 | 5688 | 5810 | 2283 | 6245 | 98,4 | 427 | 87 | 18 | | | | | | | |
| 2000 | Vestas | 1401 | PRA A03,Lilla Edet | B8c | 90/105 | 110301 | 5726 | 5918 | 5875 | 2316 | 6279 | 97,4 | 452 | 88 | 8 | | | | | | | |
| 2000 | Vestas | 1402 | Björka 1,Motala | F8g | 90/105 | 110201 | 5100 | 6837 | 6484 | 2691 | 7130 | 98,8 | 505 | 87 | 2 | | | | | | | |
| 2000 | Vestas | 1403 | Björka 2,Motala | F8g | 90/105 | 110201 | 5100 | 6749 | 6143 | 2566 | 6740 | 97,9 | 502 | 88 | 0 | | | | | | | |
| 2000 | Enercon | 1405 | Lejdeberget 2,Bokenäset | B8d | 82/78 | 110413 | 5400 | 6116 | 5758 | 2558 | 6497 | 98,8 | 424 | 96 | 17 | | | | | | | |
| 2000 | Enercon | 1406 | Lejdeberget 3,Bokenäset | B8d | 82/78 | 110416 | 5400 | 5391 | 5440 | 2282 | 6049 | 98,4 | 400 | 96 | 11 | | | | | | | |
| 2000 | Enercon | 1410 | Brostorp 1,Snogeröd | D2g | 82/98 | 100301 | 5500 | 5602 | 4847 | 2175 | 5291 | 96,8 | 417 | 96 | 0 | | | | | | | |
| 2000 | Enercon | 1411 | Ryd-Rönnerum 1,Ryd | G4i | 82/78 | 110513 | 5200 | 4272 | 4256 | 1809 | 4712 | 97,5 | 301 | 95 | 23 | | | | | | | |
| 2000 | Enercon | 1412 | Ryd-Rönnerum 2,Ryd | G4i | 82/78 | 110513 | 5200 | 4081 | 3944 | 1626 | 4207 | 96,4 | 282 | 96 | 24 | | | | | | | |
| 2000 | Enercon | 1413 | Ryd-Rönnerum 3,Ryd | G4i | 82/78 | 110513 | 5200 | 4201 | 3901 | 1592 | 4179 | 96,4 | 276 | 97 | 17 | | | | | | | |
| 2000 | Enercon | 1414 | Ryd-Rönnerum 4,Ryd | G4i | 82/78 | 110513 | 5200 | 4060 | 3922 | 1623 | 4279 | 97,4 | 277 | 97 | 18 | | | | | | | |
| 2000 | Enercon | 1415 | Ryd-Rönnerum 5,Ryd | G4i | 82/78 | 110513 | 5200 | 4294 | 4032 | 1646 | 4355 | 97,5 | 293 | 97 | 15 | | | | | | | |
| 2000 | Vestas | 1416 | Stor-Rotliden A-01,Stor-Rotl | I21e | 90/95 | 100817 | 5725 | 4506 | 5393 | 1403 | 4995 | 100 | 396 | 0 | | | | | | | | |
| 2000 | Vestas | 1417 | Stor-Rotliden A-02,Stor-Rotl | I21e | 90/95 | 100817 | 5725 | 4444 | 5490 | 1310 | 5063 | 100 | 427 | 0 | | | | | | | | |
| 2000 | Vestas | 1422 | Stor-Rotliden A-07,Stor-Rotl | I21e | 90/95 | 100923 | 5725 | 5227 | 5412 | 2017 | 5381 | 100 | 477 | 0 | | | | | | | | |
| 2000 | Vestas | 1423 | Stor-Rotliden A-08,Stor-Rotl | I21e | 90/95 | 100928 | 5725 | 4521 | 5321 | 1799 | 5354 | 100 | 409 | 0 | | | | | | | | |
| 2000 | Vestas | 1424 | Stor-Rotliden A-09,Stor-Rotl | I21e | 90/95 | 100923 | 5725 | 4960 | 6079 | 1866 | 5911 | 100 | 465 | 0 | | | | | | | | |
| 2000 | Vestas | 1425 | Stor-Rotliden A-10,Stor-Rotl | I21e | 90/95 | 100923 | 5725 | 4731 | 5997 | 1804 | 5760 | 100 | 459 | 0 | | | | | | | | |
| 2000 | Vestas | 1426 | Stor-Rotliden A-11,Stor-Rotl | I21e | 90/95 | 100928 | 5725 | 4245 | 4909 | 1727 | 5110 | 100 | 380 | 0 | | | | | | | | |
| 2000 | Vestas | 1427 | Stor-Rotliden B-01,Stor-Rotl | I21e | 90/95 | 100917 | 5725 | 4171 | 5060 | 1666 | 5114 | 100 | 401 | 0 | | | | | | | | |
| 2000 | Vestas | 1428 | Stor-Rotliden B-02,Stor-Rotl | I21e | 90/95 | 100917 | 5725 | 4373 | 5256 | 1730 | 5324 | 100 | 408 | 0 | | | | | | | | |
| 2000 | Vestas | 1429 | Stor-Rotliden B-03,Stor-Rotl | I21e | 90/95 | 100917 | 5725 | 4428 | 5474 | 1793 | 5494 | 100 | 369 | 0 | | | | | | | | |
| 2000 | Vestas | 1430 | Stor-Rotliden B-04,Stor-Rotl | I21e | 90/95 | 100917 | 5725 | 4986 | 5941 | 1939 | 5922 | 100 | 452 | 0 | | | | | | | | |
| 2000 | Vestas | 1431 | Stor-Rotliden B-05,Stor-Rotl | I21e | 90/95 | 100917 | 5725 | 4564 | 5340 | 1872 | 5411 | 100 | 418 | 0 | | | | | | | | |
| 2000 | Vestas | 1432 | Stor-Rotliden B-06,Stor-Rotl | I21e | 90/95 | 100908 | 5725 | 4437 | 5197 | 1766 | 5285 | 100 | 409 | 0 | | | | | | | | |
| 2000 | Vestas | 1433 | Stor-Rotliden B-07,Stor-Rotl | I21e | 90/95 | 100908 | 5725 | 4058 | 4501 | 1670 | 4757 | 100 | 365 | 0 | | | | | | | | |
| 2000 | Vestas | 1434 | Stor-Rotliden B-08,Stor-Rotl | I21e | 90/95 | 100914 | 5725 | 4432 | 5177 | 1938 | 5411 | 100 | 404 | 0 | | | | | | | | |
| 2000 | Vestas | 1435 | Stor-Rotliden C-01,Stor-Rotl | I21e | 90/95 | 100816 | 5725 | 4361 | 5261 | 1442 | 5011 | 100 | 421 | 0 | | | | | | | | |
| 2000 | Vestas | 1436 | Stor-Rotliden C-02,Stor-Rotl | I21e | 90/95 | 100816 | 5725 | 4444 | 5286 | 1392 | 4911 | 100 | 409 | 0 | | | | | | | | |
| 2000 | Vestas | 1439 | Stor-Rotliden C-05,Stor-Rotl | I21e | 90/95 | 100820 | 5725 | 4476 | 5173 | 1323 | 4788 | 100 | 378 | 0 | | | | | | | | |
| 2000 | Vestas | 1440 | Stor-Rotliden C-06,Stor-Rotl | I21e | 90/95 | 100825 | 5725 | 4845 | 5 | | | | | | | | | | | | | |

| Ny * | Effekt (kW) | | Fabrikat | Nr Anläggning | Placering | D/H | I drift | Ber MWh | 2012 MWh | 2013 MWh | 2014 MWh | 12mån MWh | 12mån % | Månad MWh | Tid % | Hindertid (tim) | | | | | | |
|------|-------------|------|------------------------------|---------------|-----------|--------|---------|---------|----------|----------|----------|-----------|---------|-----------|-------|-----------------|----|-----|-----|----|-----|----|
| | Hög | Låg | | | | | | | | | | | | | | AHT | MS | YNS | OVS | PU | OPS | TF |
| 2000 | Vestas | 1484 | Betåsberget 2,Backe | G20f | 90/105 | 110909 | | 4304 | 4545 | 1839 | 4983 | 90,1 | 352 | 86 | 0 | | | | | | | |
| 2000 | Vestas | 1485 | Hyringa 1,Hyringa | C8e | 90/95 | 110824 | | 5171 | 5129 | 2115 | 5635 | 94,4 | 394 | 83 | 18 | | | | | | | |
| 2000 | Vestas | 1486 | Hyringa 2,Hyringa | C8e | 90/95 | 110824 | | 5341 | 5296 | 2179 | 5835 | 94,5 | 397 | 85 | 1 | | | | | | | |
| 2000 | Vestas | 1487 | Östra Sallerup 1,Östra Salle | D2h | 90/80 | 110704 | 5400 | 5955 | 5668 | 2675 | 6341 | 93,8 | 611 | 93 | 4 | | | | | | | |
| 2000 | Vestas | 1488 | Östra Sallerup 2,Östra Salle | D2h | 90/80 | 110704 | 5400 | 6070 | 5542 | 2647 | 6247 | 92,9 | 618 | 93 | 28 | | | | | | | |
| 2000 | Vestas | 1489 | Östra Sallerup 3,Östra Salle | D2h | 90/80 | 110704 | 5400 | 6160 | 5749 | 2682 | 6386 | 93,5 | 605 | 92 | 14 | | | | | | | |
| 2000 | Enercon | 1490 | Horshaga 1,Skara | D8d | 82/108 | 110801 | 5000 | 5157 | 4993 | 2174 | 5662 | 98,6 | 390 | 96 | 0 | | | | | | | |
| 2000 | Enercon | 1491 | Horshaga 2,Skara | D8d | 82/108 | 110801 | 5000 | 5057 | 4953 | 2151 | 5600 | 98,1 | 375 | 94 | 15 | | | | | | | |
| 2000 | Enercon | 1513 | Lejesta Kraft, verk 5,Skarhu | C2i | 82/85 | 091101 | 5000 | 5120 | 4779 | 2233 | 5220 | 97,6 | 399 | 77 | 141 | | | | | | | |
| 2000 | Enercon | 1514 | Blåshult 6,Skarhult | C2i | 82/85 | 091101 | 5000 | 5085 | 4603 | 2111 | 5033 | 95,9 | 405 | 80 | 134 | | | | | | | |
| 2000 | Enercon | 1515 | Frees & Frick, verk 7,Skarh | C2i | 82/85 | 091101 | 5000 | 5102 | 4762 | 2301 | 5244 | 96,8 | 462 | 91 | 45 | | | | | | | |
| 2000 | Enercon | 1516 | Blåshult 8,Skarhult | C2i | 82/85 | 091101 | 5000 | 5653 | 5168 | 2448 | 5676 | 99,2 | 480 | 96 | 11 | | | | | | | |
| 2000 | Vestas | 1517 | STE A01,Orrefors | F4i | 90/125 | 110801 | 5531 | 5922 | 5661 | 1951 | 5630 | 95,5 | 434 | 91 | 1 | | | | | | | |
| 2000 | Vestas | 1518 | STE A02,Orrefors | F4i | 90/125 | 110801 | 5531 | 5775 | 5729 | 2119 | 5870 | 98,6 | 426 | 91 | 6 | | | | | | | |
| 2000 | Vestas | 1519 | STE A03,Orrefors | F4i | 90/125 | 110801 | 5531 | 5972 | 5734 | 2106 | 5867 | 98,5 | 415 | 89 | 15 | | | | | | | |
| 2000 | Vestas | 1520 | STE A04,Orrefors | F4i | 90/125 | 110801 | 5531 | 6341 | 6074 | 2206 | 6201 | 98,5 | 431 | 89 | 17 | | | | | | | |
| 2000 | Vestas | 1521 | STE A05,Orrefors | F4i | 90/125 | 110901 | 5531 | 6357 | 5928 | 2250 | 6153 | 98,7 | 453 | 91 | 2 | | | | | | | |
| 2000 | Vestas | 1522 | STE A06,Orrefors | F4i | 90/125 | 110901 | 5531 | 6343 | 5922 | 2215 | 6180 | 98,4 | 432 | 91 | 7 | | | | | | | |
| 2000 | Vestas | 1523 | STE A07,Orrefors | F5c | 90/125 | 110901 | 5531 | 6112 | 5641 | 2028 | 5763 | 96,3 | 413 | 88 | 22 | | | | | | | |
| 2000 | Vestas | 1524 | STE A08,Orrefors | F5c | 90/125 | 110901 | 5531 | 5926 | 5423 | 2087 | 5624 | 97 | 416 | 91 | 0 | | | | | | | |
| 2000 | Vestas | 1525 | STE A09,Orrefors | F5c | 90/125 | 110901 | 5531 | 6164 | 5737 | 2094 | 5878 | 98,7 | 431 | 91 | 1 | | | | | | | |
| 2000 | Vestas | 1526 | STE A10,Orrefors | F5c | 90/125 | 110901 | 5531 | 5685 | 5434 | 2062 | 5612 | 98,3 | 418 | 91 | 1 | | | | | | | |
| 2000 | Vestas | 1547 | Södervidinge 1 Nordväst,Sö | C2h | 90/80 | 111101 | 5600 | 6165 | 5821 | 2669 | 6275 | 95,1 | 601 | 92 | 0 | | | | | | | |
| 2000 | Vestas | 1548 | Södervidinge 2 Mitt,Södervi | C2h | 90/80 | 111101 | 5600 | 5952 | 5755 | 2664 | 6223 | 95,9 | 591 | 91 | 5 | | | | | | | |
| 2000 | Vestas | 1549 | Södervidinge 3 Sydöst,Söd | C2h | 90/80 | 111101 | 5600 | 6110 | 5971 | 2805 | 6528 | 96,4 | 601 | 91 | 0 | | | | | | | |
| 2000 | Vestas | 1553 | Sängsjön 4,Torvsele | H21e | 90/105 | 111030 | 5500 | 5436 | 6254 | 1657 | 5791 | 84,9 | 463 | 88 | 0 | | | | | | | |
| 2000 | Vestas | 1554 | Räpplinge, Svingan 2,Räppl | H5a | 90/80 | 111030 | 5200 | 5332 | 4872 | 1958 | 5099 | 86,3 | 335 | 89 | 5 | | | | | | | |
| 2000 | Vestas | 1555 | Räpplinge 3,Räpplinge | H5a | 90/80 | 111030 | 5200 | 5272 | 4864 | 1921 | 5105 | 86,5 | 329 | 89 | 7 | | | | | | | |
| 2000 | Vestas | 1556 | Räpplinge 4,Räpplinge | H5a | 90/80 | 111030 | 5200 | 5334 | 4942 | 1989 | 5210 | 86 | 344 | 90 | 4 | | | | | | | |
| 2000 | Enercon | 1559 | Ollebacken, Hällingarna 2, | F20a | 82/98 | 111201 | 5280 | 5475 | 5854 | 2215 | 6082 | 99,1 | 420 | 96 | 0 | | | | | | | |
| 2000 | Enercon | 1560 | Ollebacken, Hällingarna 3, | F20a | 82/98 | 111201 | 5280 | 6138 | 6567 | 2476 | 6794 | 98,4 | 470 | 96 | 0 | | | | | | | |
| 2000 | Enercon | 1561 | Ollebacken, Hällingarna 4, | F20a | 82/98 | 111201 | 5280 | 5399 | 5712 | 2195 | 5932 | 97,7 | 426 | 95 | 0 | | | | | | | |
| 2000 | Enercon | 1562 | Ollebacken, Hällingarna 5, | F20a | 82/98 | 111201 | 5280 | 5485 | 5906 | 2226 | 6105 | 99,1 | 423 | 95 | 0 | | | | | | | |
| 2000 | Enercon | 1563 | Ollebacken, Hällingarna 6, | F20a | 82/98 | 111201 | 5280 | 5700 | 6244 | 2256 | 6340 | 99,4 | 441 | 96 | 0 | | | | | | | |
| 2000 | Enercon | 1564 | Ollebacken, Hällingarna 7, | F20a | 82/98 | 111201 | 5280 | 5655 | 6248 | 2102 | 6190 | 98,8 | 439 | 96 | 0 | | | | | | | |
| 2000 | Vestas | 1581 | Medhamra 1,Medhamra | F8g | 90/95 | 100101 | 4038 | 5459 | 2323 | 6088 | 97,9 | 395 | 77 | 6 | | | | | | | | |
| 2000 | Vestas | 1582 | Medhamra 2,Medhamra | F8g | 90/95 | 100101 | 4234 | 5553 | 2088 | 5918 | 94 | 210 | 53 | 187 | | | | | | | | |
| 2000 | Vestas | 1583 | Mariedamm 1,Norra Björnfa | F9d | 90/95 | 091216 | 3891 | 4514 | 1769 | 4751 | 93,4 | 355 | 79 | 0 | | | | | | | | |
| 2000 | Vestas | 1584 | Mariedamm 2,Norra Björnfa | F9d | 90/95 | 091216 | 3984 | 4612 | 1758 | 4896 | 95,9 | 351 | 80 | 0 | | | | | | | | |
| 2000 | Vestas | 1585 | Gummaråsen 1,Tvååker | B5f | 90/105 | 101201 | 5229 | 6144 | 2437 | 6552 | 98,6 | | | | | | | | | | | |
| 2000 | Vestas | 1586 | Gummaråsen 2,Tvååker | B5f | 90/105 | 101201 | 5103 | 6043 | 2364 | 6383 | 97,5 | | | | | | | | | | | |
| 2000 | Vestas | 1587 | Gummaråsen 3,Tvååker | B5f | 90/105 | 101201 | 6324 | 6819 | 2366 | 6935 | 98 | | | | | | | | | | | |
| 2000 | Vestas | 1588 | Gummaråsen 4,Tvååker | B5f | 90/105 | 101201 | 5179 | 5920 | 2369 | 6435 | 98,8 | | | | | | | | | | | |
| 2000 | Vestas | 1589 | Gummaråsen 5,Tvååker | B5f | 90/105 | 101201 | 6160 | 7037 | 2669 | 7387 | 98,8 | | | | | | | | | | | |
| 2000 | Vestas | 1590 | Gislorp,Gislorp | F8h | 90/95 | 100101 | 3572 | 4878 | 2073 | 5307 | 99,1 | 373 | 84 | 0 | | | | | | | | |
| 2000 | Vestas | 1591 | Stavhälla 1,Stavhälla | G10a | 90/105 | 111101 | 5432 | 5460 | 2104 | 5887 | 97,1 | 411 | 80 | 81 | | | | | | | | |
| 2000 | Enercon | 1592 | Glysbyn,Glysbyn | C8g | 82/108 | 110420 | 5686 | 6014 | 2485 | 6514 | 98,3 | 469 | 93 | 1 | | | | | | | | |
| 2000 | Enercon | 1593 | Brålanda Torp 1,Brålanda | B9c | 82/108 | 110906 | 4998 | 5397 | 2203 | 5881 | 97,7 | 413 | 92 | 13 | | | | | | | | |
| 2000 | Enercon | 1594 | Brålanda Torp 2,Brålanda | C9a | 82/108 | 110906 | 4954 | 5428 | 2245 | 5943 | 97,8 | 403 | 91 | 17 | | | | | | | | |
| 2000 | Enercon | 1595 | Bolstad Prästgård 1,Bolstad | C9a | 82/108 | 110927 | 5484 | 5764 | 2365 | 6190 | 98 | 450 | 93 | 3 | | | | | | | | |
| 2000 | Enercon | 1596 | Bolstad Prästgård 2,Bolstad | C9a | 82/108 | 110927 | 5538 | 5875 | 2416 | 6342 | 97,9 | 409 | 88 | 42 | | | | | | | | |
| 2000 | Vestas | 1599 | SKA A01,Svedala | C2c | 90/80 | 111215 | 5742 | 4101 | 5223 | 2537 | 5935 | 96,9 | 527 | 90 | 6 | | | | | | | |
| 2000 | Vestas | 1600 | SKA A02,Svedala | C2c | 90/80 | 111215 | 5742 | 3771 | 4835 | 2306 | 5466 | 98,8 | 457 | 89 | 9 | | | | | | | |
| 2000 | Vestas | 1601 | SKA A03,Svedala | C2c | 90/80 | 111215 | 5742 | 4216 | 5492 | 2678 | 6286 | 98,7 | 534 | 90 | 10 | | | | | | | |
| 2000 | Vestas | 1602 | SKA A04,Svedala | C2b | 90/80 | 111215 | 5742 | 4816 | 6180 | 2928 | 6888 | 97,7 | 576 | 89 | 13 | | | | | | | |
| 2000 | Vestas | 1603 | SKA A05,Svedala | C2b | 90/80 | 111215 | 5742 | 4369 | 5893 | 2865 | 6617 | 98,8 | 573 | 90 | 6 | | | | | | | |
| 2000 | Enercon | 1605 | Stora Lund 2,Götene | D8g | 82/108 | 100801 | 5000 | 4499 | 5263 | 2342 | 6020 | 99 | 405 | 94 | 11 | | | | | | | |
| 2000 | Enercon | 1606 | Kollbogården 2,Götene | D8g | 82/108 | 100802 | 5000 | 4406 | 5065 | 2287 | 5810 | 98,6 | 417 | 96 | 2 | | | | | | | |
| 2000 | Vestas | 1609 | Karstorp 1,Karstorp | D8d | 90/105 | 120321 | | 3137 | 4589 | 1861 | 5030 | 94,2 | 333 | 80 | 44 | | | | | | | |
| 2000 | Vestas | 1610 | Karstorp 2,Karstorp | D8d | 90/105 | 120322 | | 3137 | 4624 | 1888 | 5090 | 94,3 | 349 | 83 | 19 | | | | | | | |
| 2000 | Vestas | 1611 | Karstorp 3,Karstorp | D8d | 90/105 | 120321 | | 3266 | 4778 | 1975 | 5289 | 94,4 | 369 | 84 | 20 | | | | | | | |
| 2000 | Vestas | 1612 | Kilagården 1,Kilagården | C8f | 90/105 | 120327 | | 3310 | 5095 | 2043 | 5481 | 95,1 | 386 | 82 | 23 | | | | | | | |
| 2000 | Vestas | 1613 | Kilagården 2,Kilagården | C8f | 90/105 | 120402 | | 3589 | 5188 | 2101 | 5668 | 95,5 | 397 | 83 | 24 | | | | | | | |
| 2000 | Vestas | 1614 | Kilagården 3,Kilagården | C8f | 90/105 | 120421 | | 3730 | 5393 | 2110 | 5795 | 95,7 | 405 | 84 | 12 | | | | | | | |
| 2000 | Vestas | 1615 | KNA A01,Knäred | C4f | 90/105 | 120309 | 4428 | 1860 | 4713 | 2224 | 5352 | 99,3 | 420 | 88 | 4 | | | | | | | |
| 2000 | Vestas | 1616 | KNA A02,Knäred | D4d | 90/105 | 120309 | 4428 | 1705 | 4496 | 2074 | 5002 | 99 | 396 | 88 | 5 | | | | | | | |
| 2000 | Vestas | 1617 | KNA A03,Knäred | D4d | 90/105 | 120309 | 4428 | 1850 | 4745 | 2212 | 5363 | 99 | 415 | 89 | 5 | | | | | | | |
| 2000 | Vestas | 1618 | KNA A04,Knäred | C4f | 90/105 | 120309 | 4428 | 2042 | 5195 | 2284 | 5715 | 98,8 | 401 | 81 | 55 | | | | | | | |
| 2000 | Vestas | 1619 | KNA A05,Knäred | D4d | 90/105 | 120309 | 4428 | 1668 | 4804 | 2177 | 5287 | 99,1 | 418 | 88 | 13 | | | | | | | |
| 2000 | Vestas | 1620 | KNA A06,Knäred | C4f | 90/105 | 120309 | 4428 | 1971 | 4990 | 2291 | 5597 | 99 | 428 | 87 | 28 | | | | | | | |
| 2000 | Vestas | 1621 | KNA A07,Knäred | D4d | 90/105 | 120309 | 4428 | 1607 | 4572 | 2076 | 4996 | 99,3 | 403 | 88 | 9 | | | | | | | |
| 2000 | Vestas | 1622 | KNA A08,Knäred | | | | | | | | | | | | | | | | | | | |

| Ny * | Effekt (kW) | | Fabrikat | Nr Anläggning | Placering | D/H I drift | Ber MWh | 2012 MWh | 2013 MWh | 2014 MWh | 12mån MWh | 12mån % | Månad MWh | Tid % | Hindertid (tim) | | | | | | |
|------|-------------|------|-----------------------------|---------------|-----------|-------------|---------|----------|----------|----------|-----------|---------|-----------|-------|-----------------|----|-----|-----|----|-----|----|
| | Hög | Låg | | | | | | | | | | | | | AHT | MS | YNS | OVS | PU | OPS | TF |
| 2000 | Enercon | 1648 | Egby 7, Egby | H5a | 82/78 | 120718 | 3000 | 1157 | 4337 | 1891 | 4648 | 99,2 | 293 | 97 | 0 | | | | | | |
| 2000 | Enercon | 1649 | Egby 8, Egby | H5a | 82/78 | 120803 | 3000 | 1107 | 4385 | 1911 | 4705 | 98,9 | 321 | 98 | 0 | | | | | | |
| 2000 | Enercon | 1650 | Egby 9, Egby | H5a | 82/78 | 120823 | 3000 | 1015 | 4372 | 1874 | 4614 | 98,4 | 319 | 97 | 1 | | | | | | |
| 2000 | Enercon | 1651 | Egby 10, Egby | H5a | 82/78 | 120831 | 3000 | 751 | 4614 | 2031 | 5111 | 99,4 | 339 | 98 | 0 | | | | | | |
| 2000 | Enercon | 1652 | Hästhalla 1, Hästhalla | C8f | 82/78 | 120416 | 4600 | 1825 | 4497 | 1852 | 4986 | 92,6 | 341 | 92 | 8 | | | | | | |
| 2000 | Enercon | 1653 | Hästhalla 2, Hästhalla | C8f | 82/78 | 120414 | 4600 | 1674 | 4160 | 1784 | 4616 | 92,8 | 339 | 93 | 0 | | | | | | |
| 2000 | Enercon | 1654 | Hästhalla 3, Hästhalla | C8f | 82/78 | 120516 | 4600 | 1739 | 4177 | 1820 | 4701 | 92,7 | 334 | 93 | 2 | | | | | | |
| 2000 | Enercon | 1655 | Hästhalla 4, Hästhalla | C8f | 82/78 | 120416 | 4600 | 1819 | 4538 | 1935 | 5105 | 92,4 | 353 | 90 | 33 | | | | | | |
| 2000 | Vestas | 1656 | Storugns III, Lärbro | J7c | 90/105 | 120615 | 6100 | 2385 | 5879 | 2490 | 6389 | 88,3 | 481 | 89 | 1 | | | | | | |
| 2000 | Vestas | 1657 | Furulund 1, Nymö | E3a | 90/95 | 120706 | 5200 | 1977 | 5255 | 2373 | 5734 | 91,5 | 419 | 89 | 0 | | | | | | |
| 2000 | Vestas | 1658 | Furulund 2, Nymö | E3a | 90/95 | 120706 | 5200 | 2060 | 5498 | 2454 | 5999 | 91,6 | 430 | 90 | 0 | | | | | | |
| 2000 | Enercon | 1659 | Sölve 1, Sölvedal | E3b | 82/98 | 120608 | 4950 | 1997 | 5215 | 2367 | 5688 | 98,7 | 425 | 97 | 3 | | | | | | |
| 2000 | Enercon | 1660 | Sölve 2, Sölvedal | E3b | 82/98 | 120608 | 4950 | 2001 | 5226 | 2328 | 5655 | 98,5 | 414 | 97 | 4 | | | | | | |
| 2000 | Vestas | 1661 | Hackeryd Vind 1, Västerlösa | F8e | 90/105 | 120630 | 4800 | 1489 | 5464 | 2164 | 5845 | 98,7 | 412 | 82 | 5 | | | | | | |
| 2000 | Vestas | 1662 | Hackeryd Vind 2, Västerlösa | F8e | 90/105 | 120627 | 4800 | 1460 | 5361 | 2147 | 5805 | 99,3 | 417 | 84 | 3 | | | | | | |
| 2000 | Vestas | 1663 | Hackeryd Vind 3, Västerlösa | F8e | 90/105 | 120626 | 4800 | 1462 | 5424 | 2095 | 5746 | 98,1 | 346 | 78 | 44 | | | | | | |
| 2000 | Vestas | 1664 | Vävinge Vind 1, Skänninge | F8d | 90/80 | 120630 | 4450 | 1176 | 4771 | 1963 | 5184 | 99,3 | 383 | 83 | 0 | | | | | | |
| 2000 | Vestas | 1665 | Vävinge Vind 2, Skänninge | F8d | 90/80 | 120704 | 4450 | 1259 | 4812 | 1952 | 5188 | 98,9 | 387 | 84 | 0 | | | | | | |
| 2000 | Vestas | 1666 | Hakarp 1, Hakarp | F3d | 90/105 | 120831 | 5000 | 892 | 4789 | 1974 | 5097 | 95,2 | 397 | 89 | 5 | | | | | | |
| 2000 | Vestas | 1667 | Hakarp 2, Hakarp | F3d | 90/105 | 120831 | 5000 | 1260 | 4752 | 1892 | 4950 | 95,6 | 408 | 89 | 3 | | | | | | |
| 2000 | Vestas | 1668 | Hakarp 3, Hakarp | F3d | 90/105 | 120831 | 5000 | 1096 | 4422 | 1809 | 4763 | 91,6 | 365 | 88 | 154 | | | | | | |
| 2000 | Vestas | 1669 | Hakarp 4, Hakarp | F3d | 90/105 | 120831 | 5000 | 1210 | 4767 | 1904 | 5027 | 95,8 | 389 | 90 | 3 | | | | | | |
| 2000 | Vestas | 1670 | Hakarp 5, Hakarp | F3g | 90/105 | 120831 | 5000 | 1187 | 4624 | 1969 | 5031 | 95,4 | 393 | 88 | 7 | | | | | | |
| 2000 | Vestas | 1671 | Hakarp 6, Hakarp | F3d | 90/105 | 120831 | 5000 | 1295 | 4829 | 1902 | 5046 | 95,9 | 395 | 89 | 2 | | | | | | |
| 2000 | Vestas | 1672 | Hakarp 7, Hakarp | F3d | 90/105 | 120831 | 5000 | 1277 | 4642 | 1872 | 4910 | 94,9 | 389 | 89 | 1 | | | | | | |
| 2000 | Vestas | 1673 | Hakarp 8, Hakarp | F3d | 90/105 | 120831 | 5000 | 1251 | 4648 | 1923 | 4947 | 96,3 | 403 | 89 | 1 | | | | | | |
| 2000 | Vestas | 1674 | Tolvmanstegen 1, Tolvmans | A9i | 90/105 | 111125 | 5200 | 1631 | 5300 | 2401 | 6131 | 97,9 | 407 | 85 | 3 | | | | | | |
| 2000 | Vestas | 1675 | Tolvmanstegen 2, Tolvmans | A9i | 90/105 | 111125 | 5200 | 1859 | 6005 | 2655 | 6811 | 97,2 | 467 | 84 | 6 | | | | | | |
| 2000 | Vestas | 1676 | Tolvmanstegen 3, Tolvmans | A9i | 90/105 | 111130 | 5200 | 1649 | 5412 | 2482 | 6350 | 97,5 | 421 | 83 | 8 | | | | | | |
| 2000 | Vestas | 1677 | Tolvmanstegen 4, Tolvmans | A9i | 90/105 | 111208 | 5200 | 1639 | 5291 | 2421 | 6229 | 98 | 410 | 83 | 5 | | | | | | |
| 2000 | Vestas | 1678 | Tolvmanstegen 5, Tolvmans | A9i | 90/105 | 111130 | 5200 | 1643 | 5359 | 2484 | 6298 | 97,2 | 416 | 84 | 3 | | | | | | |
| 2000 | Vestas | 1679 | Tolvmanstegen 6, Tolvmans | A9i | 90/105 | 111208 | 5200 | 1797 | 5716 | 2655 | 6685 | 97 | 451 | 85 | 1 | | | | | | |
| 2000 | Vestas | 1680 | Tolvmanstegen 7, Tolvmans | A9i | 90/105 | 111208 | 5200 | 1895 | 6066 | 2728 | 6909 | 97,4 | 475 | 86 | 0 | | | | | | |
| 2000 | Vestas | 1681 | Tolvmanstegen 8, Tolvmans | A9i | 90/105 | 111130 | 5200 | 1603 | 5233 | 2377 | 6101 | 97,8 | 408 | 84 | 1 | | | | | | |
| 2000 | Vestas | 1682 | Tolvmanstegen 9, Tolvmans | A9i | 90/105 | 111125 | 5200 | 1653 | 5488 | 2440 | 6287 | 97,4 | 429 | 84 | 1 | | | | | | |
| 2000 | Vestas | 1683 | Tolvmanstegen 10, Tolvman | A9i | 90/105 | 111215 | 5200 | 1804 | 5766 | 2654 | 6652 | 98 | 469 | 84 | 1 | | | | | | |
| 2000 | Vestas | 1684 | Tolvmanstegen 11, Tolvman | A9i | 90/105 | 111216 | 5200 | 1707 | 5725 | 2616 | 6607 | 98,2 | 455 | 84 | 0 | | | | | | |
| 2000 | Vestas | 1685 | Tolvmanstegen 12, Tolvman | A9i | 90/105 | 120315 | 5200 | 1557 | 5224 | 2409 | 6040 | 97,9 | 427 | 86 | 1 | | | | | | |
| 2000 | Vestas | 1686 | Tolvmanstegen 13, Tolvman | A9i | 90/105 | 120315 | 5200 | 1771 | 5711 | 2528 | 6586 | 97,8 | 434 | 84 | 8 | | | | | | |
| 2000 | Vestas | 1687 | Tolvmanstegen 14, Tolvman | A9i | 90/105 | 120315 | 5200 | 1711 | 5613 | 2540 | 6501 | 98,1 | 447 | 84 | 2 | | | | | | |
| 2000 | Vestas | 1688 | Tolvmanstegen 15, Tolvman | A9i | 90/105 | 120315 | 5200 | 1694 | 5695 | 2474 | 6489 | 97 | 361 | 74 | 85 | | | | | | |
| 2000 | Vestas | 1689 | Tolvmanstegen 16, Tolvman | A9i | 90/105 | 120315 | 5200 | 1716 | 5677 | 2640 | 6586 | 97,8 | 458 | 83 | 14 | | | | | | |
| 2000 | Vestas | 1690 | Tolvmanstegen 17, Tolvman | A9i | 90/105 | 120410 | 5200 | 1724 | 5757 | 2583 | 6553 | 97,7 | 454 | 81 | 25 | | | | | | |
| 2000 | Vestas | 1691 | Tolvmanstegen 19, Tolvman | A9i | 90/105 | 120416 | 5200 | 1770 | 5844 | 2521 | 6605 | 97,1 | 443 | 84 | 14 | | | | | | |
| 2000 | Vestas | 1692 | Tolvmanstegen 21, Tolvman | A9i | 90/105 | 120423 | 5200 | 1796 | 5859 | 2662 | 6785 | 97,9 | 462 | 85 | 5 | | | | | | |
| 2000 | Vestas | 1693 | Tolvmanstegen 22, Tolvman | A9i | 90/105 | 120410 | 5200 | 1877 | 6030 | 2734 | 6910 | 98,2 | 487 | 85 | 1 | | | | | | |
| 2000 | Vestas | 1694 | Tolvmanstegen 23, Tolvman | A9i | 90/105 | 120410 | 5200 | 1806 | 5919 | 2649 | 6802 | 98,2 | 467 | 85 | 2 | | | | | | |
| 2000 | Vestas | 1695 | Tolvmanstegen 24, Tolvman | A9i | 90/105 | 120322 | 5200 | 1746 | 5716 | 2582 | 6669 | 98,4 | 450 | 85 | 0 | | | | | | |
| 2000 | Enercon | 1696 | Lyby 3, Lyby | D2g | 82/78 | 110831 | 5200 | 1270 | 4835 | 2469 | 5535 | 96 | 508 | 98 | 0 | | | | | | |
| 2000 | Enercon | 1700 | Hörby Gård, Mjällby | E3b | 82/98 | 120531 | 2609 | 5655 | 2557 | 6202 | 96,4 | 492 | 98 | 2 | | | | | | | |
| 2000 | Vestas | 1701 | Härjevad 1, Lidköping | C8f | 90/95 | 110701 | 5500 | 1271 | 5885 | 2510 | 6523 | 92,3 | 460 | 87 | 5 | | | | | | |
| 2000 | Vestas | 1702 | Härjevad 2, Lidköping | C8f | 90/95 | 110701 | 5500 | 1261 | 5920 | 2418 | 6446 | 92,5 | 452 | 86 | 7 | | | | | | |
| 2000 | Gamesa | 1703 | Dal 1, Anna Margareta, Fjär | B6f | 90/100 | 111214 | 5400 | 4433 | 5792 | 2431 | 6422 | 100 | 196 | 82 | 0 | | | | | | |
| 2000 | Gamesa | 1704 | Dal 2, Maria, Fjärås | B6f | 90/100 | 111214 | 5400 | 3578 | 5399 | 2284 | 5945 | 100 | 184 | 82 | 0 | | | | | | |
| 2000 | Gamesa | 1705 | Dal 3, Adelé, Fjärås | B6f | 90/100 | 111222 | 5400 | 4008 | 5020 | 2113 | 5508 | 100 | 182 | 82 | 0 | | | | | | |
| 2000 | Gamesa | 1706 | Dal 4, Estelle, Fjärås | B6f | 90/100 | 111229 | 5400 | 4143 | 5725 | 2379 | 6167 | 100 | 185 | 82 | 0 | | | | | | |
| 2000 | Gamesa | 1707 | Fåleberg 1, Fåleberg | D9f | 90/100 | 111201 | 5200 | 858 | 4138 | 1506 | 4434 | 99,9 | 153 | 83 | 0 | | | | | | |
| 2000 | Gamesa | 1708 | Fåleberg 2, Fåleberg | D9f | 90/100 | 111201 | 5200 | 881 | 4490 | 1662 | 4826 | 100 | 176 | 83 | 0 | | | | | | |
| 2000 | Gamesa | 1709 | Fåleberg 3, Fåleberg | D9f | 90/100 | 111201 | 5200 | 936 | 4493 | 1597 | 4894 | 100 | 175 | 83 | 0 | | | | | | |
| 2000 | Vestas | 1710 | Nyvallsåsen 1, Bergsjö | H16g | 90/105 | 120930 | 5900 | 487 | 7337 | 2320 | 7243 | 94,3 | 488 | 85 | 37 | | | | | | |
| 2000 | Vestas | 1711 | Nyvallsåsen 2, Bergsjö | H16g | 90/105 | 120929 | 5900 | 408 | 7072 | 2156 | 6891 | 95,2 | 483 | 88 | 1 | | | | | | |
| 2000 | Vestas | 1717 | Skallmeja-Elvingsgården, Sk | C8f | 90/95 | 121026 | 5400 | 552 | 5816 | 2448 | 6455 | 95,2 | 431 | 87 | 6 | | | | | | |
| 2000 | Vestas | 1718 | Brännåsen 1, NV, Bergsjö | H16d | 90/105 | 120822 | 6631 | 508 | 6714 | 2285 | 6747 | 97,8 | 488 | 84 | 26 | | | | | | |
| 2000 | Vestas | 1719 | Brännåsen 2, SV, Bergsjö | H16d | 90/105 | 121010 | 6554 | 525 | 6593 | 2248 | 6607 | 99,1 | 480 | 88 | 1 | | | | | | |
| 2000 | Vestas | 1720 | Brännåsen 3, NO, Bergsjö | H16d | 90/105 | 121010 | 6357 | 514 | 6563 | 2070 | 6363 | 97,9 | 459 | 88 | 2 | | | | | | |
| 2000 | Vestas | 1721 | Brännåsen 4, SO, Bergsjö | H16d | 90/105 | 121010 | 6400 | 7 | 6693 | 2173 | 6651 | 98,9 | 469 | 88 | 1 | | | | | | |
| 2000 | Enercon | 1722 | Tejarp 1, Klågerup | C2f | 82/78 | 120522 | 5400 | 526 | 4943 | 2365 | 5560 | 99,2 | 432 | 96 | 1 | | | | | | |
| 2000 | Enercon | 1723 | Tejarp 2, Klågerup | C2f | 82/78 | 120524 | 5400 | 562 | 5224 | 2522 | 5878 | 99 | 474 | 96 | 4 | | | | | | |
| 2000 | Enercon | 1736 | Vara Badene 1, Kvänum | C8c | 82/98 | 121005 | 5500 | 613 | 5446 | 2301 | 6045 | 97,3 | 418 | 94 | 5 | | | | | | |
| 2000 | Enercon | 1737 | Vara Badene 2, Kvänum | C8c | 82/98 | 121005 | 5500 | 772 | 5245 | 2213 | 5846 | 97,2 | 404 | 95 | 5 | | | | | | |
| 2000 | Enercon | 1738 | Vara Badene 3, Kvänum | C8c | 82/98 | 121005</ | | | | | | | | | | | | | | | |

| Ny * | Effekt (kW) | | Fabrikat | Nr Anläggning | Placering | D/H | I drift | Ber MWh | 2012 MWh | 2013 MWh | 2014 MWh | 12mån MWh | 12mån % | Månad MWh | Tid % | Hindertid (tim) | | | | | | | |
|--------|-------------|-----|-----------|---------------|-----------------------------|-------------|---------|---------|----------|----------|----------|-----------|---------|-----------|-------|-----------------|-------|-----|-----|----|-----|-----|----|
| | Hög | Låg | | | | | | | | | | | | | | Benämning, Ort | Karta | (m) | AHT | MS | YNS | OVS | PU |
| 2000 | | | Vestas | 1811 | Vara-Bystorp,Jung | C8f | 90/95 | 130922 | 5700 | | 2397 | 2451 | 4847 | 98,8 | 428 | 81 | 28 | | | | | | |
| 2000 | | | Vestas | 1812 | Lynghy 3, NO,Everöd | D2i | 90/105 | 100621 | 5100 | | 4597 | 1777 | 4549 | 94,6 | 328 | 82 | 16 | | | | | | |
| 2000 | | | Enercon | 1818 | Köjen 1-Tagelberg 1, Tagelb | C8f | 82/108 | 131001 | 5400 | | 942 | 2134 | 3076 | 99,7 | 397 | 95 | 0 | | | | | | |
| 2000 | | | Enercon | 1819 | Torkelstorp 2- Tagelberg 2, | C8f | 82/108 | 131001 | 5400 | | 963 | 2207 | 3170 | 99,2 | 412 | 94 | 8 | | | | | | |
| 2000 | | | Vestas | 1852 | Kattorp 1,Kattorp | E8f | 90/95 | 131104 | 5300 | | | 504 | 504 | 99,8 | 504 | 83 | 14 | | | | | | |
| 2000 | 500 | | NEG Micon | 687 | Yttre Stengrund 2,Offshore | G3d | 72/60 | 010930 | 6000 | 4045 | 3111 | | 1919 | 79,3 | | | | | | | | | |
| 2000 | 500 | | NEG Micon | 688 | Yttre Stengrund 3,Offshore | G3d | 72/60 | 010930 | 6000 | 4148 | 4922 | 2172 | 5452 | 91,6 | 481 | 81 | 102 | | | | | | |
| 2000 | 500 | | NEG Micon | 689 | Yttre Stengrund 4,Offshore | G3d | 72/60 | 010930 | 6000 | 4703 | 5478 | 2019 | 5531 | 94,5 | 496 | 88 | 4 | | | | | | |
| 2000 | 1000 | | Vestas | 477 | Boel,Malmö | C2e | 80/80 | 010221 | 5800 | 5188 | 4709 | 2174 | 5324 | 99,3 | 458 | 0 | 60 | | | | | | |
| 2000 | 1000 | | Vestas | 683 | Lundåkra 1,Landskrona | C2g | 80/78 | 030120 | 5000 | 4696 | 4353 | 1533 | 4069 | 80,7 | 440 | 0 | | | | | | | |
| 2000 | 1000 | | Vestas | 684 | Lundåkra 2,Landskrona | C2g | 80/78 | 030120 | 5000 | 2866 | 4987 | 2028 | 5199 | 100 | 440 | 0 | | | | | | | |
| 2000 | 1000 | | Vestas | 973 | Byråsen, Marika,Malung | D13e | 80/78 | 071222 | 4000 | 3926 | 4288 | 1399 | 4396 | 99,3 | 316 | 75 | 1 | | | | | | |
| 2000 | 1000 | | Vestas | 974 | Byråsen, Virola,Malung | D13e | 80/78 | 071229 | 4000 | 3809 | 3622 | 1398 | 3772 | 79,6 | 308 | 77 | 1 | | | | | | |
| * 2050 | | | Repower | 1744 | Karsholms Vindbrukspark 1 | E3d32,5/100 | 121201 | 5600 | 435 | 1897 | | | 329 | 100 | | | | | | | | | |
| * 2050 | | | Repower | 1745 | Karsholms Vindbrukspark 2 | E3d32,5/100 | 121201 | 5600 | 553 | 2424 | | | 421 | 100 | | | | | | | | | |
| * 2050 | | | Repower | 1746 | Karsholms Vindbrukspark 3 | E3d32,5/100 | 121201 | 5600 | 562 | 2317 | | | 407 | 100 | | | | | | | | | |
| * 2050 | | | Repower | 1747 | Karsholms Vindbrukspark 4 | E3d32,5/100 | 121201 | 5600 | 414 | 1977 | | | 349 | 100 | | | | | | | | | |
| * 2050 | | | Repower | 1748 | Karsholms Vindbrukspark 5 | E3d32,5/100 | 121201 | 5600 | 412 | 1833 | | | 327 | 100 | | | | | | | | | |
| 2100 | | | Suzlon | 1393 | Assjö 1, Ella,Assjö | E7c | 88/100 | 101001 | 4800 | 4838 | 4603 | 1480 | 4609 | 96,4 | 153 | 62 | 144 | | | | | | |
| 2100 | | | Suzlon | 1394 | Assjö 2, Elise,Assjö | E7c | 88/100 | 101001 | 4800 | 4892 | 4809 | 1295 | 4549 | 98,4 | 168 | 74 | 21 | | | | | | |
| 2300 | | | Siemens | 890 | Lillgrund A-01,Offshore | C2a | 92,4/69 | 071020 | 6875 | 6231 | 5742 | 3224 | 6467 | 86,5 | 532 | 0 | | | | | | | |
| 2300 | | | Siemens | 891 | Lillgrund A-02,Offshore | C2a | 92,4/69 | 071020 | 6875 | 6875 | 5684 | 3234 | 6558 | 86,5 | 542 | 0 | | | | | | | |
| 2300 | | | Siemens | 892 | Lillgrund A-03,Offshore | C2a | 92,4/69 | 071021 | 6875 | 6963 | 5577 | 3243 | 6502 | 86,5 | 556 | 0 | | | | | | | |
| 2300 | | | Siemens | 893 | Lillgrund A-04,Offshore | C2a | 92,4/69 | 071022 | 6875 | 7202 | 5667 | 3316 | 6620 | 86,5 | 560 | 0 | | | | | | | |
| 2300 | | | Siemens | 894 | Lillgrund A-05,Offshore | C2a | 92,4/69 | 071024 | 6875 | 6964 | 5311 | 3379 | 6645 | 86,5 | 571 | 0 | | | | | | | |
| 2300 | | | Siemens | 895 | Lillgrund A-06,Offshore | C2a | 92,4/69 | 071022 | 6875 | 7493 | 5909 | 3460 | 6954 | 86,5 | 593 | 0 | | | | | | | |
| 2300 | | | Siemens | 896 | Lillgrund A-07,Offshore | C2a | 92,4/69 | 071022 | 6875 | 8185 | 6506 | 3633 | 7599 | 86,5 | 641 | 0 | | | | | | | |
| 2300 | | | Siemens | 897 | Lillgrund B-01,Offshore | C2a | 92,4/69 | 071104 | 6875 | 6308 | 5449 | 2901 | 5966 | 86,5 | 501 | 0 | | | | | | | |
| 2300 | | | Siemens | 898 | Lillgrund B-02,Offshore | C2a | 92,4/69 | 071104 | 6875 | 6234 | 5125 | 2855 | 5840 | 86,5 | 477 | 0 | | | | | | | |
| 2300 | | | Siemens | 899 | Lillgrund B-03,Offshore | C2a | 92,4/69 | 071104 | 6875 | 6250 | 5193 | 2903 | 5964 | 86,5 | 491 | 0 | | | | | | | |
| 2300 | | | Siemens | 900 | Lillgrund B-04,Offshore | C2a | 92,4/69 | 071104 | 6875 | 6705 | 5279 | 2969 | 6097 | 86,5 | 498 | 0 | | | | | | | |
| 2300 | | | Siemens | 901 | Lillgrund B-05,Offshore | C2a | 92,4/69 | 071108 | 6875 | 6610 | 4731 | 3044 | 5709 | 86,5 | 498 | 0 | | | | | | | |
| 2300 | | | Siemens | 902 | Lillgrund B-06,Offshore | C2a | 92,4/69 | 071108 | 6875 | 7094 | 5633 | 2074 | 5501 | 86,5 | 530 | 0 | | | | | | | |
| 2300 | | | Siemens | 903 | Lillgrund B-07,Offshore | C2a | 92,4/69 | 071023 | 6875 | 7491 | 5946 | 3246 | 6902 | 86,5 | 527 | 0 | | | | | | | |
| 2300 | | | Siemens | 904 | Lillgrund B-08,Offshore | C2a | 92,4/69 | 071020 | 6875 | 8737 | 6605 | 3729 | 7841 | 86,5 | 639 | 0 | | | | | | | |
| 2300 | | | Siemens | 905 | Lillgrund C-01,Offshore | C2a | 92,4/69 | 071117 | 6875 | 6356 | 5416 | 2768 | 5830 | 86,5 | 505 | 0 | | | | | | | |
| 2300 | | | Siemens | 906 | Lillgrund C-02,Offshore | C2a | 92,4/69 | 071120 | 6875 | 6185 | 5133 | 2718 | 5654 | 86,5 | 457 | 0 | | | | | | | |
| 2300 | | | Siemens | 907 | Lillgrund C-03,Offshore | C2a | 92,4/69 | 071120 | 6875 | 6251 | 5090 | 2750 | 5730 | 86,5 | 457 | 0 | | | | | | | |
| 2300 | | | Siemens | 908 | Lillgrund C-04,Offshore | C2a | 92,4/69 | 071124 | 6875 | 6548 | 5253 | 2850 | 6005 | 86,5 | 469 | 0 | | | | | | | |
| 2300 | | | Siemens | 909 | Lillgrund C-05,Offshore | C2a | 92,4/69 | 071124 | 6875 | 7013 | 5390 | 2791 | 6071 | 86,5 | 374 | 0 | | | | | | | |
| 2300 | | | Siemens | 910 | Lillgrund C-06,Offshore | C2a | 92,4/69 | 071108 | 6875 | 7097 | 5428 | 3007 | 6361 | 86,5 | 486 | 0 | | | | | | | |
| 2300 | | | Siemens | 911 | Lillgrund C-07,Offshore | C2a | 92,4/69 | 071108 | 6875 | 7541 | 5695 | 3215 | 6788 | 86,5 | 495 | 0 | | | | | | | |
| 2300 | | | Siemens | 912 | Lillgrund C-08,Offshore | C2a | 92,4/69 | 071115 | 6875 | 8458 | 6421 | 3341 | 7343 | 86,5 | 583 | 0 | | | | | | | |
| 2300 | | | Siemens | 913 | Lillgrund D-01,Offshore | C2a | 92,4/69 | 071201 | 6875 | 6267 | 5355 | 2772 | 5728 | 86,5 | 509 | 0 | | | | | | | |
| 2300 | | | Siemens | 914 | Lillgrund D-02,Offshore | C2a | 92,4/69 | 071201 | 6875 | 6156 | 5063 | 2678 | 5539 | 86,5 | 445 | 0 | | | | | | | |
| 2300 | | | Siemens | 915 | Lillgrund D-03,Offshore | C2a | 92,4/69 | 071201 | 6875 | 6138 | 4857 | 2708 | 5509 | 86,5 | 431 | 0 | | | | | | | |
| 2300 | | | Siemens | 916 | Lillgrund D-04,Offshore | C2a | 92,4/69 | 071201 | 6875 | 6582 | 5312 | 2858 | 6109 | 86,5 | 455 | 0 | | | | | | | |
| 2300 | | | Siemens | 917 | Lillgrund D-06,Offshore | C2a | 92,4/69 | 071120 | 6875 | 7252 | 5499 | 3028 | 6342 | 86,5 | 476 | 0 | | | | | | | |
| 2300 | | | Siemens | 918 | Lillgrund D-07,Offshore | C2a | 92,4/69 | 071124 | 6875 | 7821 | 5378 | 3103 | 6250 | 86,5 | 497 | 0 | | | | | | | |
| 2300 | | | Siemens | 919 | Lillgrund D-08,Offshore | C2a | 92,4/69 | 071112 | 6875 | 8735 | 6527 | 3505 | 7651 | 86,5 | 575 | 0 | | | | | | | |
| 2300 | | | Siemens | 920 | Lillgrund E-01,Offshore | C2a | 92,4/69 | 071004 | 6875 | 6763 | 5576 | 2746 | 5836 | 86,5 | 505 | 0 | | | | | | | |
| 2300 | | | Siemens | 921 | Lillgrund E-02,Offshore | C2a | 92,4/69 | 071004 | 6875 | 6251 | 5174 | 2654 | 5596 | 86,5 | 442 | 0 | | | | | | | |
| 2300 | | | Siemens | 922 | Lillgrund E-03,Offshore | C2a | 92,4/69 | 071004 | 6875 | 6252 | 4569 | 2688 | 5198 | 86,5 | 435 | 0 | | | | | | | |
| 2300 | | | Siemens | 923 | Lillgrund E-04,Offshore | C2a | 92,4/69 | 071201 | 6875 | 6754 | 5416 | 2846 | 6099 | 86,5 | 441 | 0 | | | | | | | |
| 2300 | | | Siemens | 924 | Lillgrund E-06,Offshore | C2a | 92,4/69 | 071201 | 6875 | 7465 | 5731 | 3042 | 6601 | 86,5 | 502 | 0 | | | | | | | |
| 2300 | | | Siemens | 925 | Lillgrund E-07,Offshore | C2a | 92,4/69 | 071128 | 6875 | 8216 | 6251 | 3363 | 7342 | 86,5 | 544 | 0 | | | | | | | |
| 2300 | | | Siemens | 926 | Lillgrund F-02,Offshore | C2a | 92,4/69 | 071004 | 6875 | 6474 | 5480 | 2706 | 5819 | 86,5 | 449 | 0 | | | | | | | |
| 2300 | | | Siemens | 927 | Lillgrund F-03,Offshore | C2a | 92,4/69 | 071006 | 6875 | 6543 | 5302 | 2701 | 5825 | 86,5 | 435 | 0 | | | | | | | |
| 2300 | | | Siemens | 928 | Lillgrund F-04,Offshore | C2a | 92,4/69 | 071201 | 6875 | 6931 | 5474 | 2733 | 6045 | 86,5 | 447 | 0 | | | | | | | |
| 2300 | | | Siemens | 929 | Lillgrund F-05,Offshore | C2a | 92,4/69 | 071201 | 6875 | 7429 | 5769 | 3068 | 6696 | 86,5 | 447 | 0 | | | | | | | |
| 2300 | | | Siemens | 930 | Lillgrund F-06,Offshore | C2a | 92,4/69 | 071201 | 6875 | 8261 | 6354 | 3289 | 7235 | 86,5 | 552 | 0 | | | | | | | |
| 2300 | | | Siemens | 931 | Lillgrund G-02,Offshore | C2a | 92,4/69 | 071008 | 6875 | 6309 | 5686 | 2787 | 5966 | 86,5 | 500 | 0 | | | | | | | |
| 2300 | | | Siemens | 932 | Lillgrund G-03,Offshore | C2a | 92,4/69 | 071007 | 6875 | 6923 | 5722 | 2795 | 6171 | 86,5 | 466 | 0 | | | | | | | |
| 2300 | | | Siemens | 933 | Lillgrund G-04,Offshore | C2a | 92,4/69 | 071201 | 6875 | 7222 | 5784 | 2919 | 6421 | 86,5 | 477 | 0 | | | | | | | |
| 2300 | | | Siemens | 934 | Lillgrund G-05,Offshore | C2a | 92,4/69 | 071201 | 6875 | 8131 | 6045 | 3151 | 6830 | 86,5 | 505 | 0 | | | | | | | |
| 2300 | | | Siemens | 935 | Lillgrund H-02,Offshore | C2a | 92,4/69 | 071005 | 6875 | 7797 | 6356 | 2946 | 6599 | 86,5 | 555 | 0 | | | | | | | |
| 2300 | | | Siemens | 936 | Lillgrund H-03,Offshore | C2a | 92,4/69 | 071008 | 6875 | 7664 | 6179 | 2942 | 6608 | 86,5 | 494 | 0 | | | | | | | |
| 2300 | | | Siemens | 937 | Lillgrund H-04,Offshore | C2a | 92,4/69 | 071006 | 6875 | 7983 | 6241 | 2652 | 6372 | 86,5 | 66 | 0 | | | | | | | |
| 2300 | | | Enercon | | | | | | | | | | | | | | | | | | | | |

| Ny * | Effekt (kW) | | Fabrikat | Nr Anläggning | Placering | D/H | I drift | Ber MWh | 2012 MWh | 2013 MWh | 2014 MWh | 12mån MWh | 12mån % | Månad MWh | Tid % | Hindertid (tim) | | | | | | |
|--------|-------------|----------------------------------|----------|---------------|-----------|------|---------|---------|----------|----------|----------|-----------|---------|-----------|-------|-----------------|-------|-----|-----|----|-----|-----|
| | Hög | Låg | | | | | | | | | | | | | | Benämning, Ort | Karta | (m) | AHT | MS | YNS | OVS |
| 2300 | Enercon | 1538 Gabrielsberget Syd Vind 12 | J20b | 82/108 | 110416 | 6000 | 5218 | 5656 | 1979 | 5858 | 99,2 | 539 | 98 | 0 | | | | | | | | |
| 2300 | Enercon | 1539 Gabrielsberget Syd Vind 13 | J20b | 82/108 | 110416 | 6000 | 5390 | 6053 | 2050 | 6112 | 98,8 | 580 | 98 | 2 | | | | | | | | |
| 2300 | Enercon | 1540 Gabrielsberget Syd Vind 14 | J20b | 82/108 | 110416 | 6000 | 5182 | 5538 | 1945 | 5680 | 98,9 | 513 | 97 | 8 | | | | | | | | |
| 2300 | Enercon | 1541 Gabrielsberget Syd Vind 15 | J20b | 82/108 | 110416 | 6000 | 5180 | 5680 | 1956 | 5825 | 98,8 | 520 | 94 | 15 | | | | | | | | |
| 2300 | Enercon | 1542 Gabrielsberget Syd Vind 16 | J20b | 82/108 | 110416 | 6000 | 5139 | 5482 | 1950 | 5639 | 99,4 | 507 | 98 | 0 | | | | | | | | |
| 2300 | Enercon | 1543 Gabrielsberget Syd Vind 17 | J20b | 82/108 | 110416 | 6000 | 5174 | 5408 | 1830 | 5462 | 99,1 | 495 | 98 | 3 | | | | | | | | |
| 2300 | Enercon | 1544 Gabrielsberget Syd Vind 18 | J20b | 82/108 | 110416 | 6000 | 5199 | 5058 | 1897 | 5228 | 98,9 | 497 | 96 | 11 | | | | | | | | |
| 2300 | Enercon | 1545 Gabrielsberget Syd Vind 19 | J20b | 82/108 | 110416 | 6000 | 5108 | 5319 | 1920 | 5551 | 99,4 | 512 | 97 | 2 | | | | | | | | |
| 2300 | Enercon | 1546 Gabrielsberget Syd Vind 20 | J20b | 82/108 | 110416 | 6000 | 4972 | 5371 | 1908 | 5552 | 99,2 | 495 | 97 | 1 | | | | | | | | |
| 2300 | Siemens | 1565 Kyrkberget, T2,Kyrkberget | D14b | 101/80 | 110314 | 7300 | 688 | 6790 | 1227 | 6020 | 90,1 | 456 | 90 | 0 | | | | | | | | |
| 2300 | Siemens | 1566 Kyrkberget, T3,Kyrkberget | D14b | 101/80 | 110314 | 7300 | 598 | 6633 | 1403 | 6081 | 90,1 | 444 | 89 | 0 | | | | | | | | |
| 2300 | Siemens | 1567 Kyrkberget, T4,Kyrkberget | D14b | 101/80 | 110314 | 7300 | 598 | 6262 | 1311 | 5869 | 90,1 | 401 | 89 | 0 | | | | | | | | |
| 2300 | Siemens | 1568 Kyrkberget, T5,Kyrkberget | D14b | 101/80 | 110314 | 7300 | 547 | 5185 | 1264 | 4746 | 77,9 | 398 | 88 | 0 | | | | | | | | |
| 2300 | Siemens | 1569 Kyrkberget, T6,Kyrkberget | D14b | 101/80 | 110314 | 7300 | 584 | 6420 | 1382 | 5985 | 90,1 | 437 | 86 | 0 | | | | | | | | |
| 2300 | Siemens | 1570 Kyrkberget, T7,Kyrkberget | D14b | 101/80 | 110314 | 7300 | 753 | 7687 | 1572 | 7099 | 91,3 | 498 | 88 | 0 | | | | | | | | |
| 2300 | Siemens | 1571 Kyrkberget, T8,Kyrkberget | D14b | 101/80 | 110314 | 7300 | 870 | 7437 | 2063 | 7310 | 95,3 | 537 | 92 | 0 | | | | | | | | |
| 2300 | Siemens | 1572 Kyrkberget, T9,Kyrkberget | D14b | 101/80 | 110314 | 7300 | 736 | 7239 | 1482 | 6540 | 91,3 | 462 | 86 | 0 | | | | | | | | |
| 2300 | Siemens | 1573 Kyrkberget, T10,Kyrkberget | D14b | 101/80 | 110314 | 7300 | 705 | 6966 | 1271 | 6238 | 89,6 | 463 | 91 | 0 | | | | | | | | |
| 2300 | Siemens | 1574 Kyrkberget, T11,Kyrkberget | D14b | 101/80 | 110314 | 7300 | 761 | 7405 | 1599 | 6794 | 91,3 | 598 | 75 | 0 | | | | | | | | |
| 2300 | Enercon | 1604 LMK 01, Svedala,Svedala | C2c | 82/78 | 101005 | 5500 | 6881 | 6534 | 3306 | 7514 | 95,7 | 565 | 89 | 64 | | | | | | | | |
| 2300 | Siemens | 1749 Milletorps Vindbrukspark 1, | F5g | 101/100 | 121201 | 6000 | | 1948 | | 421 | 100 | | | | | | | | | | | |
| 2300 | Siemens | 1750 Milletorps Vindbrukspark 2, | F5g | 101/100 | 121201 | 6000 | | 2177 | | 411 | 100 | | | | | | | | | | | |
| 2300 | Siemens | 1751 Milletorps Vindbrukspark 3, | F5g | 101/100 | 121201 | 6000 | | 1743 | | 422 | 100 | | | | | | | | | | | |
| 2300 | Siemens | 1752 Milletorps Vindbrukspark 4, | F5g | 101/100 | 121201 | 6000 | | 2026 | | 382 | 100 | | | | | | | | | | | |
| 2300 | Siemens | 1753 Milletorps Vindbrukspark 5, | F5g | 101/100 | 121201 | 6000 | | 2056 | | 382 | 100 | | | | | | | | | | | |
| 2300 | Siemens | 1754 Milletorps Vindbrukspark 6, | F5g | 101/100 | 121201 | 6000 | | 2191 | | 424 | 100 | | | | | | | | | | | |
| 2300 | Siemens | 1755 Milletorps Vindbrukspark 7, | F5g | 101/100 | 121201 | 6000 | | 2028 | | 378 | 100 | | | | | | | | | | | |
| 2300 | Siemens | 1756 Milletorps Vindbrukspark 8, | F5g | 101/100 | 121201 | 6000 | | 2244 | | 447 | 100 | | | | | | | | | | | |
| 2300 | Siemens | 1757 Milletorps Vindbrukspark 9, | F5g | 101/100 | 121201 | 6000 | | 2132 | | 410 | 100 | | | | | | | | | | | |
| 2300 | Siemens | 1758 Milletorps Vindbrukspark 10 | F5g | 101/100 | 121201 | 6000 | | 2245 | | 441 | 100 | | | | | | | | | | | |
| 2300 | Siemens | 1759 Milletorps Vindbrukspark 11 | F5g | 101/100 | 121201 | 6000 | | 2062 | | 436 | 100 | | | | | | | | | | | |
| 2300 | Enercon | 1763 Vettåsen 1, Thomas Dahl,U | G13i | 82/108 | 120209 | 6250 | | 4238 | 1983 | 6221 | 94,2 | 479 | 95 | 17 | | | | | | | | |
| 2300 | Enercon | 1764 Vettåsen 2, Thomas Dahl,U | G13i | 82/108 | 120209 | 6250 | | 3915 | 1615 | 5530 | 94,5 | 419 | 93 | 26 | | | | | | | | |
| 2300 | Enercon | 1765 Vettåsen 3, Thomas Dahl,U | G13i | 82/108 | 120209 | 6250 | | 3660 | 1795 | 5454 | 96,5 | 409 | 94 | 16 | | | | | | | | |
| 2300 | Enercon | 1766 Vettåsen 4, Thomas Dahl,D | G13i | 82/108 | 120217 | 6250 | | 3281 | 1858 | 5139 | 97,5 | 409 | 94 | 16 | | | | | | | | |
| 2300 | Enercon | 1767 Vettåsen 5, Thomas Dahl,K | G13i | 82/108 | 120221 | 6250 | | 3517 | 1934 | 5451 | 98,4 | 449 | 96 | 2 | | | | | | | | |
| 2300 | Enercon | 1768 Vettåsen 6, Thomas Dahl,J | G13i | 82/108 | 120224 | 6250 | | 3288 | 1812 | 5100 | 98 | 415 | 96 | 6 | | | | | | | | |
| 2300 | Enercon | 1774 Råtan-Digerberget 1,Råtan | E17i | 82/98 | 110224 | 5400 | | 3415 | 1830 | 5246 | 99 | 394 | 96 | 1 | | | | | | | | |
| 2300 | Enercon | 1775 Råtan-Digerberget 2,Råtan | E17i | 82/98 | 110224 | 5400 | | 3685 | 2033 | 5718 | 99 | 416 | 95 | 14 | | | | | | | | |
| 2300 | Enercon | 1776 Råtan-Digerberget 3,Råtan | E17i | 82/98 | 110224 | 5400 | | 3139 | 1714 | 4853 | 98,2 | 364 | 96 | 0 | | | | | | | | |
| 2300 | Enercon | 1777 Råtan-Digerberget 4,Råtan | E17f | 82/98 | 110224 | 5400 | | 3057 | 1775 | 4832 | 98,3 | 368 | 97 | 0 | | | | | | | | |
| 2300 | Enercon | 1778 Råtan-Digerberget 5,Råtan | E17i | 82/98 | 110224 | 5400 | | 3376 | 1789 | 5165 | 98,9 | 393 | 96 | 1 | | | | | | | | |
| * 2300 | Siemens | 1784 Fredriksdal 1,Fredriksdal | E6h | 101/100 | 130201 | 6200 | | 3464 | 2641 | 6105 | 97,7 | 514 | 91 | 7 | | | | | | | | |
| * 2300 | Siemens | 1785 Fredriksdal 3,Fredriksdal | E6h | 101/100 | 130201 | 6200 | | 3474 | 2630 | 6104 | 97,7 | 518 | 92 | 8 | | | | | | | | |
| * 2300 | Siemens | 1786 Fredriksdal 4,Fredriksdal | E6h | 101/100 | 130201 | 6200 | | 3279 | 2567 | 5845 | 97,4 | 500 | 92 | 6 | | | | | | | | |
| * 2300 | Siemens | 1787 Fredriksdal 5,Fredriksdal | E6h | 101/100 | 130201 | 6200 | | 3273 | 2448 | 5721 | 97,3 | 483 | 89 | 26 | | | | | | | | |
| * 2300 | Siemens | 1788 Fredriksdal 6,Fredriksdal | E6h | 101/100 | 130201 | 6200 | | 3455 | 2522 | 5977 | 98,5 | 491 | 93 | 2 | | | | | | | | |
| 2300 | Enercon | 1813 Mårtensklack 1,Böle | G13i | 82/108 | 120109 | 6250 | | 6741 | 2201 | 6708 | 93,2 | 470 | 96 | 1 | | | | | | | | |
| 2300 | Enercon | 1814 Mårtensklack 2,Böle | G13i | 82/108 | 120118 | 6250 | | 6253 | 2138 | 6212 | 88,8 | 439 | 91 | 40 | | | | | | | | |
| 2300 | Enercon | 1815 Mårtensklack 3,Böle | G13i | 82/108 | 120119 | 6250 | | 6373 | 1922 | 6065 | 91,8 | 388 | 91 | 37 | | | | | | | | |
| 2300 | Enercon | 1816 Mårtensklack 4,Böle | G13i | 82/108 | 120110 | 6250 | | 6610 | 2155 | 6524 | 92 | 431 | 90 | 33 | | | | | | | | |
| 2300 | Siemens | 1820 Trattberget VK01,Trattberg | H20e | 101/100 | 121110 | 6000 | | 1986 | 1986 | 100 | 532 | 0 | | | | | | | | | | |
| 2300 | Siemens | 1821 Trattberget VK02,Trattberg | H20e | 101/100 | 121110 | 6000 | | 1432 | 1432 | 100 | 534 | 0 | | | | | | | | | | |
| 2300 | Siemens | 1822 Trattberget VK03,Trattberg | H20e | 101/100 | 121110 | 6000 | | 2344 | 2344 | 100 | 519 | 0 | | | | | | | | | | |
| 2300 | Siemens | 1823 Trattberget VK04,Trattberg | H20e | 101/100 | 121110 | 6000 | | 2346 | 2346 | 100 | 522 | 0 | | | | | | | | | | |
| 2300 | Siemens | 1824 Trattberget VK05,Trattberg | H20e | 101/100 | 121110 | 6000 | | 2256 | 2256 | 100 | 547 | 0 | | | | | | | | | | |
| 2300 | Siemens | 1825 Trattberget VK06,Trattberg | H20e | 101/100 | 121110 | 6000 | | 2327 | 2327 | 100 | 530 | 0 | | | | | | | | | | |
| 2300 | Siemens | 1826 Trattberget VK07,Trattberg | H20e | 101/100 | 121110 | 6000 | | 2448 | 2448 | 100 | 575 | 0 | | | | | | | | | | |
| 2300 | Siemens | 1827 Trattberget VK08,Trattberg | H20e | 101/100 | 121110 | 6000 | | 2383 | 2383 | 100 | 577 | 0 | | | | | | | | | | |
| 2300 | Siemens | 1828 Trattberget VK09,Trattberg | H20e | 101/100 | 121110 | 6000 | | 1505 | 1505 | 100 | 545 | 0 | | | | | | | | | | |
| 2300 | Siemens | 1829 Trattberget VK10,Trattberg | H20e | 101/100 | 121110 | 6000 | | 2320 | 2320 | 100 | 605 | 0 | | | | | | | | | | |
| 2300 | Siemens | 1830 Trattberget VK11,Trattberg | H20e | 101/100 | 121110 | 6000 | | 2193 | 2193 | 100 | 567 | 0 | | | | | | | | | | |
| 2300 | Siemens | 1831 Trattberget VK12,Trattberg | H20e | 101/100 | 121110 | 6000 | | 1776 | 1776 | 100 | 491 | 0 | | | | | | | | | | |
| 2300 | Siemens | 1832 Trattberget VK13,Trattberg | H20e | 101/100 | 121110 | 6000 | | 2315 | 2315 | 100 | 580 | 0 | | | | | | | | | | |
| 2300 | Siemens | 1833 Trattberget VK14,Trattberg | H20e | 101/100 | 121110 | 6000 | | 2031 | 2031 | 100 | 560 | 0 | | | | | | | | | | |
| 2300 | Siemens | 1834 Trattberget VK15,Trattberg | H20e | 101/100 | 121110 | 6000 | | 1898 | 1898 | 100 | 459 | 0 | | | | | | | | | | |
| 2300 | Siemens | 1835 Trattberget VK16,Trattberg | H20e | 101/100 | 121110 | 6000 | | 2188 | 2188 | 100 | 548 | 0 | | | | | | | | | | |
| 2300 | Siemens | 1836 Trattberget VK17,Trattberg | H20e | 101/100 | 130110 | 6000 | | 1791 | 1791 | 100 | 511 | 0 | | | | | | | | | | |
| 2300 | Siemens | 1837 Trattberget VK18,Trattberg | H20e | 101/100 | 121110 | 6000 | | 2050 | 2050 | 100 | 555 | 0 | | | | | | | | | | |
| 2300 | Siemens | 1838 Trattberget VK19,Trattberg | H20e | 101/100 | 130110 | 6000 | | 2108 | 2108 | 100 | 538 | 0 | | | | | | | | | | |
| 2300 | Siemens | 1839 Trattberget VK20,Trattberg | H20e | 101/100 | 130110 | 6000 | | 2007 | 2007 | 100 | 553 | 0 | | | | | | | | | | |
| 2300 | Siemens | 1840 Trattberget VK21,Trattberg | H20e | 101/100 | 130110 | 6000 | | 2247 | 2247 | 100 | 560 | 0 | | | | | | | | | | |
| 2300 | Siemens | 1842 Trattberget VK23,Trattberg | H20e | 101/100 | 130110 | 6000 | | 2255 | 2255 | 100 | 547 | 0 | | | | | | | | | | |

Karta över verkens placering

