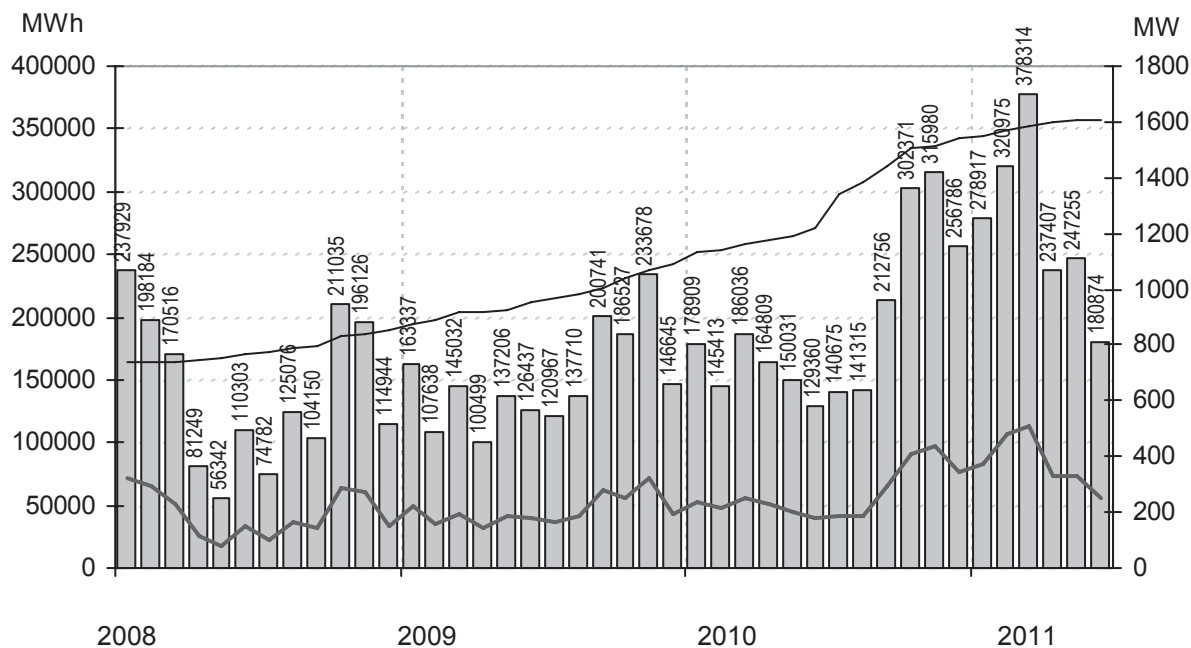


# Vindkraftverk

juni 2011

Internetadress: <http://www.vindstat.nu>

## Vindproducerad el



Staplarna visar producerad energi per månad i MWh, linjerna visar installerad effekt respektive månadens medeleffekt i MW

## Sammanfattning

|                          |       |           |
|--------------------------|-------|-----------|
| Installerad effekt       | (MW)  | 1609      |
| Antal verk               | (st)  | 1347      |
| Rapporterade denna månad | (st)  | 1053      |
| Elproduktion             |       |           |
| 2009                     | (MWh) | 1 806 416 |
| 2010                     | (MWh) | 2 324 439 |
| 2011                     | (MWh) | 1 643 740 |
| Rapporterat denna månad  | (MWh) | 180 874   |
| Medeleffekt denna månad  | (MW)  | 251       |

### Vindens energiinnehåll

|   |       |
|---|-------|
| Månaden jämfört med samma månad tidigare år                     | 111 % |
| Året hittills jämfört med samma period under tidigare år        | 117 % |
| Senaste 12 månaderna jämfört med samma period under tidigare år | 108 % |

### Förklaringar till tabellen på följande sidor

|       |   |     |                       |
|-------|---|-----|-----------------------|
| Ber   | Av ägaren lämnad uppgift på beräknad elproduktion       |     |                       |
| Årtal | Sammanlagd elproduktion under respektive år             |     |                       |
| 12mån | Elproduktion och tillgänglighet senaste 12 månaderna    |     |                       |
| Månad | Elproduktion under månaden                              |     |                       |
| Tid   | Andel av månaden som generatoren varit inkopplad på nät |     |                       |
| *     | Nytt verk   |     |                       |
| AHT   | Avläst hindertid  |     |                       |
| MS    | Mindre störning   | PU  | Planerat underhåll    |
| YNS   | Yttre nätstörning                                       | ÖPS | Övrigt planerat stopp |
| ÖYS   | Övrig yttre störning                                    | TF  | Tekniskt fel          |

### Ett projekt finansierat av Energimyndigheten

Sammanställningen gjord 2011-07-11

Ansvarig:

Nils-Eric Carlstedt, telefon: 08 - 739 54 67

E-post: [nilseric.carlstedt@vattenfall.com](mailto:nilseric.carlstedt@vattenfall.com)Adress: Vattenfall Power Consultant AB, Vindstatistik  
Box 527

162 16 Stockholm

Telefon: 08 - 739 60 00 vx Fax: 08 - 739 62 98

















| Ny * | Effekt (kW)<br>Hög<br>Låg | Fabrikat<br>Låg | Nr<br>Anläggning<br>Benämning, Ort | Placering<br>Karta          | D/H<br>(m) | I drift | Ber<br>MWh | 2009<br>MWh | 2010<br>MWh | 2011<br>MWh | 12mån<br>MWh | 12mån<br>% | Månad<br>MWh | Tid<br>% | Hindertid (tim) |     |     |     |    |     |    |  |
|------|---------------------------|-----------------|------------------------------------|-----------------------------|------------|---------|------------|-------------|-------------|-------------|--------------|------------|--------------|----------|-----------------|-----|-----|-----|----|-----|----|--|
|      |                           |                 |                                    |                             |            |         |            |             |             |             |              |            |              |          | AHT             | MS  | YNS | ÖYS | PU | ÖPS | TF |  |
| 850  | Vestas                    | 728             | Skeby/Tungelunda I,Väders          | E8c                         | 52/74      | 031107  | 1800       | 1570        | 1334        | 1048        | 1786         | 99,3       | 124          | 83       | 6               |     |     |     |    |     |    |  |
| 850  | Vestas                    | 729             | Skeby/Tungelunda II,Väder          | E8c                         | 52/74      | 031107  | 1800       | 1599        | 1349        | 1069        | 1802         | 95,9       | 124          | 83       | 24              |     |     |     |    |     |    |  |
| 850  | Vestas                    | 730             | Skeby/Tungelunda III,Väder         | E8c                         | 52/74      | 031107  | 1800       | 1473        | 1262        |             | 651          | 99,6       |              |          |                 |     |     |     |    |     |    |  |
| 850  | Vestas                    | 731             | Elvinda, Rocklunda,Rocklun         | F8g                         | 52/65      | 031103  | 1600       | 1449        | 1320        | 939         | 1684         | 97,7       | 113          | 81       | 24              |     |     |     |    |     |    |  |
| 850  | Vestas                    | 732             | Stavlösa Vind I,Stavlösa           | E8f                         | 52/65      | 031205  | 1750       | 1607        | 1422        | 1056        | 1853         | 97,2       | 122          | 81       | 2               |     |     |     |    |     |    |  |
| 850  | Vestas                    | 733             | Stavlösa Vind II,Stavlösa          | E8f                         | 52/65      | 031205  | 1750       | 1648        | 1461        | 1060        | 1878         | 93,6       | 120          | 83       | 7               |     |     |     |    |     |    |  |
| 850  | Vestas                    | 734             | Stavlösa Vind III,Stavlösa         | F8d                         | 52/65      | 031205  | 1750       | 1577        | 1446        | 1035        | 1864         | 98,8       | 119          | 82       | 18              |     |     |     |    |     |    |  |
| 850  | Vestas                    | 739             | Mofalla Laggarebolet,Lagga         | E8d                         | 52/65      | 031210  |            | 1302        | 1027        | 873         | 1478         | 99,1       | 102          | 81       | 1               |     |     |     |    |     |    |  |
| 850  | Vestas                    | 743             | Heås, Sibräcka,Sibräcka            | B7g                         | 52/60      | 040121  | 1900       | 2159        | 1945        | 1294        | 2383         | 97,2       | 166          | 82       | 5               |     |     |     |    |     |    |  |
| 850  | Vestas                    | 748             | Björnskallem, Kajsa,Ljungda        | C18f                        | 52/65      | 031211  | 1900       | 1210        | 1219        | 760         | 1303         | 96,9       | 114          | 72       | 2               |     |     |     |    |     |    |  |
| 850  | Vestas                    | 749             | Sparlösa,Sparlösa                  | C8e                         | 52/65      | 030901  | 1650       | 1396        | 1214        | 888         | 1598         | 96,1       | 77           | 53       | 195             |     |     |     |    |     |    |  |
| 850  | Vestas                    | 751             | Stenkil,Stenskilsvarv, Varv        | F8g                         | 52/65      | 040128  | 1700       | 1353        | 1173        | 911         | 1572         | 98,2       | 105          | 80       | 35              |     |     |     |    |     |    |  |
| 850  | Vestas                    | 762             | Kvismaren 1,Odensbacken            | F10c                        | 52/74      | 040401  | 1430       | 1201        | 1058        | 864         | 1475         | 86,1       | 100          | 75       | 8               |     |     |     |    |     |    |  |
| 850  | Vestas                    | 764             | Ölanda,Istrum                      | D8h                         | 52/74      | 040225  | 1400       | 1148        | 913         | 713         | 1224         | 96,7       | 81           | 72       | 4               |     |     |     |    |     |    |  |
| 850  | Vestas                    | 766             | Andersfält, 1SYD,Tönnersa          | C4e                         | 52/65      | 040131  | 1700       | 1457        | 1310        | 852         | 1533         | 99,4       | 113          | 70       | 0               |     |     |     |    |     |    |  |
| 850  | Vestas                    | 767             | Andersfält, 2 MITT,Tönnersa        | C4e                         | 52/65      | 040131  | 1750       | 1638        | 1493        | 889         | 1669         | 98,2       | 124          | 71       | 0               |     |     |     |    |     |    |  |
| 850  | Vestas                    | 768             | Andersfält, 3 NORR,Törnne          | C4e                         | 52/65      | 040131  | 1750       | 1650        | 1475        | 942         | 1702         | 97,3       | 118          | 64       | 58              |     |     |     |    |     |    |  |
| 850  | Vestas                    | 769             | Långeryd I,Långeryd                | F8d                         | 52/65      | 040506  | 1750       | 1594        | 1508        | 1045        | 1914         | 99,5       | 117          | 82       | 9               |     |     |     |    |     |    |  |
| 850  | Vestas                    | 770             | Långeryd II,Långeryd               | F8d                         | 52/65      | 040506  | 1750       | 1486        | 1472        | 1024        | 1875         | 99,1       | 109          | 82       | 9               |     |     |     |    |     |    |  |
| 850  | Vestas                    | 773             | Brunnstorp Källby, Broby-Br        | D8g                         | 52/74      | 040713  | 1500       | 1294        | 1148        | 778         | 1459         | 96,5       | 88           | 66       | 5               |     |     |     |    |     |    |  |
| 850  | Vestas                    | 784             | St Wahlby,Väderstad                | F8d                         | 52/74      | 041206  | 1850       | 1659        | 1404        | 1095        | 1875         | 98,6       | 124          | 82       | 5               |     |     |     |    |     |    |  |
| 850  | Vestas                    | 785             | Tågneby Vind I,Tågneby             | E8b                         | 52/65      | 041215  | 2000       | 1945        | 1603        |             | 854          | 99,1       |              |          |                 |     |     |     |    |     |    |  |
| 850  | Vestas                    | 786             | Isberget I,Skonberga               | F8e                         | 52/74      | 050103  | 1600       | 1431        | 1277        | 991         | 1691         | 99,4       | 133          | 83       | 7               |     |     |     |    |     |    |  |
| 850  | Vestas                    | 787             | Isberget II,Skonberga              | F8e                         | 52/74      | 050103  | 1600       | 1315        | 1203        | 968         | 1611         | 98,6       | 119          | 81       | 17              |     |     |     |    |     |    |  |
| 850  | Vestas                    | 788             | Isberget III,Skonberga             | F8e                         | 52/74      | 050103  | 1600       | 1262        | 1261        | 945         | 1644         | 98,5       | 132          | 81       | 8               |     |     |     |    |     |    |  |
| 850  | Vestas                    | 794             | Blås ut Vind AB,Lundsbrun          | D8g                         | 52/74      | 041213  | 1500       | 1343        | 1065        | 771         | 1403         | 99         | 77           | 68       | 67              |     |     |     |    |     |    |  |
| 850  | Vestas                    | 795             | Kilabacken Vind AB,Lundsbr         | D8g                         | 52/74      | 050118  | 1550       | 1544        | 1272        | 941         | 1694         | 99,3       | 102          | 74       | 5               |     |     |     |    |     |    |  |
| 850  | Vestas                    | 796             | Ova Vind,Lundsbrunn                | D8g                         | 52/74      | 050116  | 1500       | 1359        | 1093        | 878         | 1520         | 99,3       | 97           | 72       | 1               |     |     |     |    |     |    |  |
| 850  | Vestas                    | 797             | Ryda Vind AB,Ryda                  | C8b                         | 52/74      | 050127  | 1600       | 1537        | 1396        | 974         | 1769         | 96,5       | 102          | 74       | 0               |     |     |     |    |     |    |  |
| 850  | Vestas                    | 799             | Storön 1,Storön                    | M25c                        | 52/65      | 050201  | 1700       | 1580        | 1586        | 890         | 1762         | 99,2       | 128          | 70       | 2               |     |     |     |    |     |    |  |
| 850  | Vestas                    | 800             | Hunflen, Ferdinand 20615,          | E13a                        | 52/65      | 050403  | 1800       | 1837        | 1750        | 1114        | 2138         | 99,6       | 110          | 82       | 10              |     |     |     |    |     |    |  |
| 850  | Vestas                    | 801             | Hunflen, Vilhelm 20616,Äpp         | E13a                        | 52/65      | 050504  | 1800       | 1608        | 1521        | 915         | 1808         | 96,7       | 99           | 80       | 11              |     |     |     |    |     |    |  |
| 850  | Vestas                    | 802             | Viglunda,Skara                     | D8d                         | 52/72      | 050517  | 1600       | 1417        | 1128        | 890         | 1541         | 99         | 100          | 75       | 4               |     |     |     |    |     |    |  |
| 850  | Vestas                    | 804             | Östest-kröket,Tännäs               | C17f                        | 52/55      | 051124  | 1900       | 2324        | 2107        | 1227        | 2342         | 92,1       | 195          | 86       | 5               |     |     |     |    |     |    |  |
| 850  | Vestas                    | 820             | Lönhult,Lönhults gård              | C3d                         | 52/74      | 051017  | 1875       | 2051        | 1956        | 1144        | 2171         | 97,7       | 124          | 76       | 1               |     |     |     |    |     |    |  |
| 850  | Vestas                    | 840             | Uljeberg,Uljebergs Säteri          | F8e                         | 52/74      | 051221  | 1400       | 1254        | 1073        | 858         | 1448         | 98,3       | 106          | 80       | 4               |     |     |     |    |     |    |  |
| 850  | Vestas                    | 842             | Vannborga Övra,Borgholm            | H5a                         | 52/44      | 041231  | 1700       | 1759        | 1897        | 974         | 2053         | 95,7       | 99           | 82       | 17              |     |     |     |    |     |    |  |
| 850  | Vestas                    | 843             | Vannborga Nedra,Borgholm           | H5a                         | 52/44      | 041231  | 1700       | 1871        | 2033        | 1093        | 2250         | 99         | 107          | 83       | 20              |     |     |     |    |     |    |  |
| 850  | Vestas                    | 844             | Ekekullen,Dintestorp               | D7h                         | 52/74      | 051228  | 1650       | 1420        | 1178        | 897         | 1563         | 99,1       | 96           | 78       | 9               |     |     |     |    |     |    |  |
| 850  | Vestas                    | 848             | Örum Ystad,Örum                    | D2c                         | 52/65      | 050520  | 2400       | 2399        | 2322        | 1134        | 2255         | 88,8       |              |          |                 |     |     |     |    |     |    |  |
| 850  | Vestas                    | 853             | Lyckevind Istrum,Istrum            | D8e                         | 52/74      | 061130  | 1400       | 1196        | 967         | 752         | 1298         | 99,2       | 88           | 73       | 3               |     |     |     |    |     |    |  |
| 850  | Vestas                    | 855             | Brönnestad 3,Brönnestad B          | C1i                         | 52/52      | 070206  | 2050       | 2126        | 2176        | 1188        | 2296         | 99,1       | 126          | 84       | 2               |     |     |     |    |     |    |  |
| 850  | Vestas                    | 977             | Uvbergets Hanna,Smedjeb            | F12e                        | 52/74      | 070105  | 1800       | 1469        | 1452        | 922         | 1758         | 99,5       | 87           | 77       | 19              |     |     |     |    |     |    |  |
| 850  | Vestas                    | 1001            | Börstad 1,Börstad                  | F8d                         | 52/65      | 070308  | 1750       |             |             | 397         | 397          | 99,4       | 106          | 78       | 38              |     |     |     |    |     |    |  |
| 850  | Vestas                    | 1011            | Storön 2,Storön                    | M25c                        | 52/74      | 081011  | 1650       | 1278        | 1746        | 995         | 1966         | 95,7       | 136          | 67       | 63              |     |     |     |    |     |    |  |
| 850  | Vestas                    | 1014            | Stavlösa Vind IV,Stavlösa          | F8d                         | 52/65      | 080704  | 1750       | 1499        | 1455        |             | 820          |            |              |          |                 |     |     |     |    |     |    |  |
| 850  | Vestas                    | 1015            | Biängen,Vänersnäs                  | C8g                         | 52/74      | 080829  | 1800       | 1221        | 1528        | 998         | 1870         | 98,4       | 108          | 71       | 17              |     |     |     |    |     |    |  |
| 850  | Vestas                    | 1028            | Räfsjö Vind I,Räfsjö Säteri        | F8d                         | 52/74      | 080711  | 1700       | 1714        | 1478        | 1106        | 1916         | 94,2       | 125          | 83       | 17              |     |     |     |    |     |    |  |
| 850  | Vestas                    | 1031            | Varnäs vind,Väderstad              | F8d                         | 52/74      | 090218  | 1800       | 1146        | 1314        | 1040        | 1771         | 99,1       | 114          | 77       | 35              |     |     |     |    |     |    |  |
| 850  | Vestas                    | 1103            | TÖS,Väderstad                      | E8f                         | 52/74      | 090115  | 1800       | 1466        | 1397        | 1096        | 1860         | 99         | 127          | 81       | 3               |     |     |     |    |     |    |  |
| 850  | Vestas                    | 1253            | Uvbergets Boel,Smedjebac           | F12e                        | 52/74      | 100601  | 1500       |             | 532         | 887         | 1419         | 99,6       | 81           | 76       | 4               |     |     |     |    |     |    |  |
| 850  | 200                       | Vestas          | 693                                | Nils, Almåsa,Almåsaerberget | E19g       | 52/55   | 021008     | 2162        | 1557        | 829         | 1016         | 1156       | 65,9         | 157      | 84              | 3   |     |     |    |     |    |  |
| 850  | 200                       | Vestas          | 718                                | Tomten flo,Gråstorp         | C8d        | 52/74   | 030630     | 1786        | 1472        | 1287        | 924          | 1671       | 96,2         | 95       | 43              | 284 |     |     |    |     |    |  |
| 850  | 200                       | Vestas          | 740                                | Östergården, Skara,Skänin   | D8d        | 52/74   | 031215     | 1650        | 1425        | 1138        | 879          | 1538       | 98,2         | 101      | 73              | 21  |     |     |    |     |    |  |
| 850  | 200                       | Vestas          | 789                                | Kroka 1,Söderåkra           | G4b        | 52/74   | 041128     | 1890        | 1449        | 1502        | 796          | 1620       | 96,6         | 90       | 79              | 4   |     |     |    |     |    |  |
| 900  | Neg Micon                 | 851             | OBV2, Hjällö,Hjo                   | E8a                         | 52/60      | 050726  | 1700       | 1254        | 1451        | 830         | 1683         | 98,1       | 87           | 72       | 0               |     |     |     |    |     |    |  |
| 900  | 200                       | NEG Micon       | 482                                | Äppelbovind ek.för,Hunnfle  | E13a       | 52/49   | 001217     | 1600        | 1475        | 1559        | 1085         | 1973       | 97,2         | 102      | 88              | 2   |     |     |    |     |    |  |
| 900  | 200                       | NEG Micon       | 483                                | Klimpfjäll 1,Klimpfjäll     | F23d       | 52/49   | 010116     |             | 1049        | 944         | 572          | 1056       | 90,4         |          |                 |     |     |     |    |     |    |  |
| 900  | 200                       | NEG Micon       | 484                                | Klimpfjäll 2,Klimpfjäll     | F23d       | 52/49   | 010116     |             | 1013        | 847         | 645          | 1125       | 98,5         |          |                 |     |     |     |    |     |    |  |
| 900  | 200                       | NEG Micon       | 485                                | Klimpfjäll 3,Klimpfjäll     | F23d       | 52/49   | 010116     |             | 1189        | 1064        | 772          | 1290       | 88,9         | 92       | 71              | 28  |     |     |    |     |    |  |
| 900  | 200                       | NEG Micon       | 493                                | Dömestorp 2,Laholm          | C4b        | 52/55   | 010614     | 1650        | 549         | 1224        | 866          | 1458       | 98,6         | 96       | 80              | 1   |     |     |    |     |    |  |
| 900  | 200                       | NEG Micon       | 494                                | Viscaria 1,Viscaria         | J29h       | 52/49   | 010918     | 1846        | 1239        | 797         | 650          | 952        | 98,4         |          |                 |     |     |     |    |     |    |  |
| 900  | 200                       | NEG Micon       | 495                                | Viscaria 2,Viscaria         | J29h       | 52/49   | 010901     | 1784        | 1232        | 1238        | 608          | 1252       | 98,8         |          |                 |     |     |     |    |     |    |  |
| 900  | 200                       | NEG Micon       | 496                                | Viscaria 3,Viscaria         | J29h       | 52/49   | 010901     | 1896        | 1135        | 1238        | 661          | 1279       | 95,1         |          |                 |     |     |     |    |     |    |  |
| 900  | 200                       | NEG Micon       | 497                                | Viscaria 4,Viscaria         | J29h       | 52/49   | 010901     | 1837        | 1213        | 1080        | 671          | 1241       | 99,8         |          |                 |     |     |     |    |     |    |  |
| 900  | 200                       | NEG Micon       | 499                                | Viscaria 6,Viscaria         | J29h       | 52/49   | 010901     | 1709        | 1190        | 1242        | 654          | 1310       | 94,7         |          |                 |     |     |     |    |     |    |  |
| 900  | 200                       | NEG Micon       | 618                                | Greby,Greby                 | G4i        | 52/55   | 001229     | 1652        | 1370        | 1428        | 763          | 1512       | 84,8         | 57       | 63              | 198 |     |     |    |     |    |  |
| 900  | 200                       | NEG Micon       | 694                                | Össjö boställe,Össjö        | C3h        | 52/72   | 020101     |             | 688         | 1565        | 925          | 1737       | 99,5         | 102      | 75              | 4   |     |     |    |     |    |  |
| 900  | 200                       | NEG Micon       | 735                                | Stenninge 1,Stenninge       | H5d        | 52/49   | 040111     | 1900        | 2014        | 1951        | 1141         | 2190       | 97,5         | 111      | 82              | 0   |     |     |    |     |    |  |
| 900  | 200                       | NEG Micon       | 736                                | Badane 2,Kättilstorp        | D7h        | 52/72   | 030911     |             | 1267        | 1070        | 819          | 1450       | 99,7         | 87       | 83              | 2   |     |     |    |     |    |  |
| 900  | 200                       | NEG Micon       | 737                                | Badane 3,Kättilstorp        | D7h        | 52/     |            |             |             |             |              |            |              |          |                 |     |     |     |    |     |    |  |

| Ny * | Effekt (kW)<br>Hög | Fabrikat<br>Lag | Nr Anläggning<br>Benämning, Ort | Placering<br>Karta | D/H<br>(m) | I drift | Ber<br>MWh | 2009<br>MWh | 2010<br>MWh | 2011<br>MWh | 12mån<br>MWh | 12mån<br>% | Månad<br>MWh | Tid<br>% | Hindertid (tim) |     |     |     |    |     |    |     |    |
|------|--------------------|-----------------|---------------------------------|--------------------|------------|---------|------------|-------------|-------------|-------------|--------------|------------|--------------|----------|-----------------|-----|-----|-----|----|-----|----|-----|----|
|      |                    |                 |                                 |                    |            |         |            |             |             |             |              |            |              |          | AHT             | MS  | YNS | ÖYS | PU | ÖPS | TF |     |    |
| 1425 |                    | GE Wind En      | 611 Utgrunden T7,Offshore       | G3h                | 70,5/65    | 001221  |            | 4702        | 5118        | 2640        | 5383         | 92,7       | 282          | 78       | 36              |     |     |     |    |     |    |     |    |
| 1500 |                    | Enercon         | 381 Trollberg,Trollebergs Gärd  | C2e                | 66/67      | 990515  | 3700       | 3250        | 3335        | 1282        | 3013         | 95         |              |          |                 |     |     |     |    |     |    |     |    |
| 1500 |                    | GE Wind En      | 642 Assmäsa 1,Assmäsa           | D2b                | 70,5/65    | 020712  | 3475       | 2359        | 2542        | 1477        | 2789         | 92,9       | 168          | 71       | 0               |     |     |     |    |     |    |     |    |
| 1500 |                    | GE Wind En      | 643 Assmäsa 2,Assmäsa           | D2b                | 70,5/65    | 020712  | 3475       | 2036        | 2498        | 1372        | 2652         | 94,2       | 145          | 75       | 0               |     |     |     |    |     |    |     |    |
| 1500 |                    | GE Wind En      | 644 Assmäsa 3,Assmäsa           | D2b                | 70,5/65    | 020712  | 3475       | 2348        | 2096        | 1271        | 2554         | 93,9       | 133          | 73       | 0               |     |     |     |    |     |    |     |    |
| 1500 |                    | Enercon         | 645 Hedagården 1,Hedagården     | C3b                | 66/65      | 020901  | 3700       | 3771        | 3720        | 2023        | 3992         | 98,8       | 202          | 88       | 8               |     |     |     |    |     |    |     |    |
| 1500 |                    | Enercon         | 646 Hedagården 4,Hedagården     | C3b                | 66/65      | 020901  | 3700       | 3695        | 3689        | 1916        | 3835         | 97,5       | 185          | 86       | 23              |     |     |     |    |     |    |     |    |
| 1500 |                    | Enercon         | 647 Hedagården 5,Hedagården     | C3b                | 66/65      | 020901  | 3700       | 3580        | 3333        | 1837        | 3472         | 94,1       | 187          | 84       | 42              |     |     |     |    |     |    |     |    |
| 1500 |                    | Enercon         | 675 Hedagården 2,Hedagården     | C3b                | 70/65      | 030101  | 3700       | 3485        | 3621        | 1957        | 3904         | 98,3       | 200          | 89       | 6               |     |     |     |    |     |    |     |    |
| 1500 |                    | Enercon         | 676 Hedagården 3,Hedagården     | C3b                | 70/65      | 030101  | 3700       | 3609        | 3382        | 1606        | 3386         | 90,7       | 177          | 80       | 73              |     |     |     |    |     |    |     |    |
| 1500 |                    | Enercon         | 677 Hedagården 6,Hedagården     | C3b                | 70/65      | 030101  | 3700       | 3604        | 3384        | 1884        | 3522         | 90,5       | 190          | 88       | 18              |     |     |     |    |     |    |     |    |
| 1500 |                    | Enercon         | 714 Annevind 1,Annelöv          | C2h                | 70/65      | 030615  | 3700       | 3282        | 3236        | 1796        | 3411         | 94,6       | 193          | 88       | 7               |     |     |     |    |     |    |     |    |
| 1500 |                    | Enercon         | 715 Annevind 2,Annelöv          | C2h                | 70/65      | 030615  | 3700       | 3526        | 3558        | 1784        | 3605         | 96,6       | 192          | 87       | 11              |     |     |     |    |     |    |     |    |
| 1500 |                    | Vestas          | 777 Offerdal Råshön 1,Änge      | E19g               | 82/78      | 041207  | 4031       | 3630        | 3470        | 2095        | 3791         | 95,8       | 286          | 76       | 20              |     |     |     |    |     |    |     |    |
| 1500 |                    | Vestas          | 778 Offerdal Råshön 2,Änge      | E19g               | 82/78      | 041205  | 4319       | 4203        | 4034        | 1900        | 3884         | 89,4       | 320          | 79       | 27              |     |     |     |    |     |    |     |    |
| 1500 |                    | Vestas          | 779 Offerdal Råshön 3,Änge      | E19g               | 82/78      | 041208  | 3613       | 3692        | 3452        | 2117        | 3876         | 95,8       | 270          | 77       | 31              |     |     |     |    |     |    |     |    |
| 1500 |                    | Vestas          | 780 Offerdal Råshön 4,Änge      | E19g               | 82/78      | 041208  | 4023       | 3582        | 3582        | 1921        | 3780         | 94,5       | 251          | 73       | 66              |     |     |     |    |     |    |     |    |
| 1500 |                    | Vestas          | 781 Offerdal Råshön 5,Änge      | E19g               | 82/78      | 041203  | 4032       | 3125        | 3599        | 1958        | 3793         | 94,6       | 275          | 73       | 59              |     |     |     |    |     |    |     |    |
| 1500 |                    | Vestas          | 782 Offerdal Råshön 6,Änge      | E19g               | 82/78      | 041205  | 4054       | 3649        | 3332        | 1875        | 3431         | 90,8       | 271          | 79       | 27              |     |     |     |    |     |    |     |    |
| 1500 |                    | Vestas          | 783 Offerdal Råshön 7,Änge      | E19h               | 82/78      | 041203  | 3955       | 3705        | 3618        | 2057        | 3841         | 95,6       | 272          | 78       | 33              |     |     |     |    |     |    |     |    |
| 1500 |                    | Vestas          | 809 Aapua 1,Aapua               | M27i               | 82/78      | 051003  | 4465       | 4005        | 4132        | 2451        | 4675         | 95,7       | 402          | 81       | 38              | 8   |     |     |    |     |    | 30  |    |
| 1500 |                    | Vestas          | 810 Aapua 2,Aapua               | M27i               | 82/78      | 050929  | 4232       | 3319        | 3854        | 2343        | 4456         | 93,5       | 368          | 78       | 181             | 182 | 11  |     |    |     |    | 30  |    |
| 1500 |                    | Vestas          | 811 Aapua 3,Aapua               | M27i               | 82/78      | 050928  | 4140       | 3476        | 3606        | 2028        | 3969         | 95,8       | 250          | 53       | 31              | 13  | 11  |     |    |     |    | 9   | 18 |
| 1500 |                    | Vestas          | 812 Aapua 4,Aapua               | M27i               | 82/78      | 050928  | 4344       | 2854        | 4112        | 2413        | 4645         | 93,8       | 400          | 83       | 4               | 8   | 1   |     |    |     |    | 26  |    |
| 1500 |                    | Vestas          | 813 Aapua 5,Aapua               | M27i               | 82/78      | 050928  | 4397       | 3599        | 3993        | 2415        | 4619         | 94,1       | 385          | 81       | 10              | 14  | 6   | 10  |    |     |    | 1   |    |
| 1500 |                    | Vestas          | 814 Aapua 6,Aapua               | M27i               | 82/78      | 050928  | 4500       | 3179        | 4000        | 2502        | 4799         | 88,3       | 386          | 79       | 8               | 22  | 4   | 24  |    |     |    |     | 23 |
| 1500 |                    | Vestas          | 815 Aapua 7,Aapua               | M27i               | 82/78      | 050928  | 4613       | 3734        | 4271        | 2550        | 4887         | 88,6       | 344          | 70       | 52              | 60  | 2   | 6   |    |     |    | 6   |    |
| 1500 |                    | Enercon         | 888 Nygårdshus 2,Eslöv          | -                  | 66/65      | 041001  | 4200       | 3465        | 3247        | 1655        | 3282         | 95,6       | 200          | 92       | 1               |     |     |     |    |     |    |     |    |
| 1500 |                    | Enercon         | 889 p.Olofsson Energi,Eslöv     | D2g                | 70/86      | 041101  | 4100       | 3419        | 3427        | 1025        | 2868         | 96,9       | 144          | 90       | 12              |     |     |     |    |     |    |     |    |
| 1500 |                    | Vestas          | 1152 Gans 1,Näsudden            | I5i                | 90/80      | 090301  |            | 374         | 6255        | 3638        | 7034         | 96,1       | 479          | 87       | 11              |     |     |     |    |     |    |     |    |
| 1500 |                    | Vestas          | 1153 Gans 2,Näsudden            | I5i                | 90/80      | 090301  |            |             | 6239        | 3613        | 6997         | 96,5       | 483          | 86       | 32              |     |     |     |    |     |    |     |    |
| 1500 |                    | Vestas          | 1154 Gans 3,Näsudden            | I5i                | 90/80      | 090301  |            |             | 6164        | 3606        | 6944         | 98,9       | 482          | 87       | 13              |     |     |     |    |     |    |     |    |
| 1500 |                    | Vestas          | 1155 Gans 4,Näsudden            | I5i                | 90/80      | 090301  |            |             | 6084        | 3613        | 6943         | 98,1       | 478          | 85       | 33              |     |     |     |    |     |    |     |    |
| 1500 |                    | Enercon         | 1199 Granberget Vindpark 1,Sike | L21d               | 82/98      | 091103  | 5500       | 1670        | 4387        | 2416        | 4962         | 98,8       | 333          | 96       | 5               |     |     |     |    |     |    |     |    |
| 1500 |                    | Enercon         | 1200 Granberget Vindpark 2,Sike | L21d               | 82/98      | 091103  | 5500       | 1592        | 4236        | 2190        | 4686         | 98,3       | 265          | 89       | 62              |     |     |     |    |     |    |     |    |
| 1500 |                    | Enercon         | 1201 Granberget Vindpark 3,Sike | L21d               | 82/98      | 091103  | 5500       | 1419        | 4427        | 2436        | 5017         | 98,3       | 332          | 96       | 5               |     |     |     |    |     |    |     |    |
| 1500 |                    | Enercon         | 1202 Granberget Vindpark 4,Sike | L21d               | 82/98      | 091103  | 5500       | 1088        | 4262        | 2405        | 4966         | 98,8       | 325          | 96       | 4               |     |     |     |    |     |    |     |    |
| 1500 |                    | Enercon         | 1203 Granberget Vindpark 5,Sike | L21d               | 82/98      | 091103  | 5500       | 1806        | 4571        | 2512        | 5139         | 99,1       | 315          | 92       | 32              |     |     |     |    |     |    |     |    |
| 1500 |                    | Enercon         | 1204 Granberget Vindpark 6,Sike | L21d               | 82/98      | 091103  | 5500       | 1986        | 4626        | 2619        | 5315         | 97,9       | 349          | 96       | 3               |     |     |     |    |     |    |     |    |
| 1500 | 300                | Vestas          | 386 Slitevind XXIV,Smöjen       | J7c                | 66/67      | 990824  | 4119       | 2712        | 3250        | 1739        | 3671         | 96,4       | 160          | 62       | 112             |     |     |     |    |     | 54 | 100 |    |
| 1500 | 300                | Vestas          | 387 Slitevind XXV,Smöjen        | J7c                | 66/67      | 990824  | 3970       | 2285        | 3141        | 1705        | 3565         | 96,7       | 148          | 60       | 42              |     |     |     |    |     | 55 | 29  |    |
| 1500 | 300                | Vestas          | 388 Slitevind XXVI,Smöjen       | J7c                | 66/67      | 990828  | 4266       | 3070        | 3444        | 1815        | 3861         | 95,6       | 186          | 63       | 16              |     |     |     |    |     | 56 |     |    |
| 1500 | 300                | Vestas          | 389 Slitevind XXVII,Smöjen      | J7c                | 66/67      | 990826  | 4298       | 3579        | 3745        | 1641        | 3802         | 94,3       | 189          | 66       | 19              |     |     |     |    |     | 60 |     |    |
| 1500 | 300                | Vestas          | 422 Svireg, Skåls 12,Näs        | I5f                | 66/67      | 000121  | 4550       | 3622        | 3352        | 2218        | 4100         | 92,7       | 208          | 53       | 90              |     |     |     |    |     | 15 |     | 79 |
| 1500 | 300                | Vestas          | 474 Sturugns 7,Lärbro           | J7e                | 66/78      | 010317  | 3377       | 2864        | 2849        | 1703        | 3349         | 96,2       | 173          | 84       | 34              |     |     |     |    |     | 34 |     |    |
| 1500 | 300                | Vestas          | 475 Sturugns 8,Lärbro           | J7e                | 66/78      | 010313  | 3430       | 3068        | 3040        | 1802        | 3564         | 97,3       | 174          | 82       | 61              |     |     |     |    |     | 61 |     |    |
| 1500 | 300                | Vestas          | 476 Sturugns 9,Lärbro           | J7e                | 66/78      | 010310  | 3497       | 3020        | 2849        | 1825        | 3443         | 94,8       | 192          | 85       | 35              |     |     |     |    |     | 34 |     |    |
| 1500 | 300                | Vestas          | 617 Sigvards 3,Näs              | I5f                | 66/80      | 011108  | 4500       | 3993        | 4136        | 2568        | 4852         | 96,9       | 272          | 87       | 5               |     |     |     |    |     |    |     |    |
| 1500 | 400                | NEG Micon       | 699 Digerberget,Digerberget     | D17c               | 72/62      | 020101  | 3800       | 2391        | 1916        | 1545        | 2663         | 89,4       | 182          | 69       | 137             |     |     |     |    |     |    |     |    |
| 1500 | 400                | NEG Micon       | 830 Mungseröd 1,Mungseröd       | A9f                | 72/67      | 060131  | 2800       | 2804        | 2358        | 1577        | 2891         | 97,4       | 184          | 82       | 26              |     |     |     |    |     |    |     |    |
| 1500 | 400                | NEG Micon       | 831 Mungseröd 2,Mungseröd       | A9f                | 72/67      | 060131  | 2800       | 2545        | 2123        | 1457        | 2693         | 99,5       | 169          | 81       | 27              |     |     |     |    |     |    |     |    |
| 1500 | 400                | NEG Micon       | 832 Mungseröd 3,Mungseröd       | A9f                | 72/67      | 060131  | 2800       | 2780        | 2467        | 1513        | 2889         | 99,4       | 167          | 81       | 26              |     |     |     |    |     |    |     |    |
| 1500 | 400                | NEG Micon       | 833 Mungseröd 4,Mungseröd       | A9f                | 72/67      | 060131  | 2800       | 2379        | 2193        | 1331        | 2544         | 99,2       | 155          | 87       | 1               |     |     |     |    |     |    |     |    |
| 1500 | 400                | NEG Micon       | 834 Mungseröd 5,Mungseröd       | A9f                | 72/67      | 060131  | 2800       | 2854        | 2696        | 1496        | 2989         | 98,3       | 137          | 77       | 83              |     |     |     |    |     |    |     |    |
| 1500 | 400                | NEG Micon       | 835 Mungseröd 6,Mungseröd       | A9f                | 72/67      | 060131  | 2800       | 2770        | 2460        | 1547        | 2908         | 97,9       | 170          | 82       | 26              |     |     |     |    |     |    |     |    |
| 1750 |                    | Vestas          | 1029 Anja,Kall                  | -                  | 66/0       | 000101  | 0          | 1311        | 1422        | 1068        | 1735         | 87,3       | 114          | 26       | 192             |     |     |     |    |     |    |     |    |
| 1800 |                    | Vestas          | 858 Stenbrona 1,Stenbrona-Sal   | C8f                | 90/95      | 070204  | 5200       | 5299        | 4764        | 2801        | 5544         | 97,3       |              |          |                 |     |     |     |    |     |    |     |    |
| 1800 |                    | Vestas          | 859 Stenbrona 2,Stenbrona-Sal   | C8f                | 90/95      | 070204  | 5200       | 5361        | 4814        | 2817        | 5598         | 97,7       |              |          |                 |     |     |     |    |     |    |     |    |
| 1800 |                    | Vestas          | 956 Vara Tornum,Kvänum          | C8f                | 90/95      | 080101  | 5300       | 5256        | 4719        | 3156        | 5886         | 97,7       | 324          | 66       | 117             |     |     |     |    |     |    |     |    |
| 1800 |                    | Vestas          | 1040 Ebborp Vind, Emma,Ebborp   | F8h                | 90/95      | 080619  | 4970       | 4437        | 4018        |             | 2286         |            |              |          |                 |     |     |     |    |     |    |     |    |
| 1800 |                    | Vestas          | 1095 Gategården, Bengt C,Gateg  | C8f                | 90/65      | 080501  | 5500       | 3203        | 4620        | 2975        | 5657         | 96         | 356          | 77       | 2               |     |     |     |    |     |    |     |    |
| 1800 |                    | Vestas          | 1096 Västergården 1,Brälanda    | C9a                | 90/95      | 090109  | 5300       | 4360        | 4826        | 2741        | 5460         | 96,9       | 325          | 76       | 6               |     |     |     |    |     |    |     |    |
| 1800 |                    | Vestas          | 1097 Västergården 2,Brälanda    | C9a                | 90/95      | 090109  | 5300       | 4013        | 4610        | 2631        | 5210         | 97,7       | 298          | 75       | 5               |     |     |     |    |     |    |     |    |
| 1800 |                    | Vestas          | 1098 Västergården 3,Brälanda    | C9a                | 90/95      | 090109  | 5300       | 4543        | 4674        | 2748        | 5423         | 95,4       | 324          | 76       | 9               |     |     |     |    |     |    |     |    |
| 1800 |                    | Vestas          | 1099 Västergården 4,Brälanda    | C9a                | 90/95      | 090109  | 5300       | 4368        | 4698        | 2672        | 5321         | 98,6       | 314          | 76       | 6               |     |     |     |    |     |    |     |    |
| 1800 |                    | Vestas          | 1100 Tångelsbol 5,Brälanda      | C9a                | 90/95      | 090109  | 5400       | 4250        | 4661        | 2793        | 5416         | 96,2       | 336          | 74       | 1               |     |     |     |    |     |    |     |    |
| 1800 |                    | Vestas          | 1101 Tångelsbol 6,Brälanda      | -                  | 90/95      | 090109  | 5400       | 4411        | 4784        | 2892        | 5586         | 96,9       | 339          | 73       | 0               |     |     |     |    |     |    |     |    |
| 1800 |                    |                 |                                 |                    |            |         |            |             |             |             |              |            |              |          |                 |     |     |     |    |     |    |     |    |

| Ny * | Effekt (kW) |      | Fabrikat                   | Nr Anläggning | Placering | D/H    | I drift | Ber MWh | 2009 MWh | 2010 MWh | 2011 MWh | 12mån MWh | 12mån % | Månad MWh | Tid % | Hindertid (tim) |    |     |     |    |     |    |
|------|-------------|------|----------------------------|---------------|-----------|--------|---------|---------|----------|----------|----------|-----------|---------|-----------|-------|-----------------|----|-----|-----|----|-----|----|
|      | Hög         | Låg  |                            |               |           |        |         |         |          |          |          |           |         |           |       | AHT             | MS | YNS | ÖYS | PU | ÖPS | TF |
| 2000 | Enercon     | 869  | Stora Istad 2,Stora Istad  | H5a           | 82/78     | 070501 | 5500    | 5381    | 4980     | 2963     | 5465     | 90,7      | 285     | 87        | 213   |                 |    |     |     |    |     |    |
| 2000 | Enercon     | 870  | Stora Istad 3,Stora Istad  | H5a           | 82/78     | 070501 | 5500    | 4988    | 4958     | 2864     | 5308     | 88        | 284     | 86        | 218   |                 |    |     |     |    |     |    |
| 2000 | Enercon     | 871  | Stora Istad 4,Stora Istad  | H5a           | 82/78     | 070501 | 5500    | 5046    | 4982     | 2957     | 5683     | 91,6      | 255     | 86        | 211   |                 |    |     |     |    |     |    |
| 2000 | Enercon     | 872  | Stora Istad 5,Stora Istad  | H5a           | 82/78     | 070501 | 5500    | 5312    | 4945     | 2994     | 5835     | 91,7      | 293     | 89        | 198   |                 |    |     |     |    |     |    |
| 2000 | Vestas      | 878  | Hornberget 1,Aspliden      | I23e          | 90/80     | 070111 | 6000    | 4301    | 5834     | 3344     | 6407     | 100       | 445     | 89        | 0     |                 |    |     |     |    |     |    |
| 2000 | Vestas      | 879  | Hornberget 2,Aspliden      | I23e          | 90/80     | 070111 | 6000    | 4886    | 5291     | 3204     | 6134     | 100       | 410     | 88        | 0     |                 |    |     |     |    |     |    |
| 2000 | Vestas      | 880  | Hornberget 3,Aspliden      | I23e          | 90/80     | 070111 | 6000    | 4582    | 6488     | 3580     | 6905     | 100       | 467     | 90        | 0     |                 |    |     |     |    |     |    |
| 2000 | Vestas      | 881  | Hornberget 4,Aspliden      | I23e          | 90/80     | 070111 | 6000    | 4864    | 6595     | 3906     | 7313     | 100       | 443     | 91        | 0     |                 |    |     |     |    |     |    |
| 2000 | Vestas      | 882  | Hornberget 5,Aspliden      | I23e          | 90/80     | 070111 | 6000    | 4136    | 5870     | 3441     | 6505     | 100       | 427     | 91        | 0     |                 |    |     |     |    |     |    |
| 2000 | Vestas      | 939  | Lyngby 2,Lyngby            | D2i           | 90/95     | 071201 | 5200    | 4444    | 4727     | 2380     | 4776     | 96,4      | 315     | 80        | 1     |                 |    |     |     |    |     |    |
| 2000 | Enercon     | 957  | Entorp 1,Ardala            | D8d           | 82/78     | 071126 | 4400    | 3133    | 3059     | 2343     | 4109     | 92,1      | 281     | 86        | 58    |                 |    |     |     |    |     |    |
| 2000 | Enercon     | 958  | Entorp 2,Ardala            | D8d           | 82/78     | 071126 | 4400    | 3768    | 2848     | 2337     | 3964     | 96,3      | 266     | 91        | 18    |                 |    |     |     |    |     |    |
| 2000 | Vestas      | 959  | Långås vindpark 1,Långnäs  | B5f           | 90/80     | 071214 | 5082    | 4851    | 4467     | 2372     | 4933     | 93,4      | 277     | 71        | 1     |                 |    |     |     |    |     |    |
| 2000 | Vestas      | 960  | Långås vindpark 2,Långnäs  | B5f           | 90/80     | 071214 | 5150    | 4908    | 4419     | 2625     | 5077     | 96,4      | 322     | 72        | 0     |                 |    |     |     |    |     |    |
| 2000 | Vestas      | 961  | Långås vindpark 3,Långnäs  | B5f           | 90/80     | 071214 | 4995    | 4317    | 4455     | 2272     | 4802     | 95,7      | 266     | 68        | 14    |                 |    |     |     |    |     |    |
| 2000 | Vestas      | 962  | Långås vindpark 4,Långnäs  | B5f           | 90/80     | 071214 | 5091    | 4558    | 4522     | 2624     | 5177     | 96,8      | 317     | 72        | 1     |                 |    |     |     |    |     |    |
| 2000 | Enercon     | 966  | Skörstorp 1,Skörstorp      | D7h           | 82/98     | 080118 | 5500    | 5132    | 4211     | 3090     | 5466     | 96,6      | 327     | 85        | 70    |                 |    |     |     |    |     |    |
| 2000 | Enercon     | 967  | Skörstorp 2,Skörstorp      | D7h           | 82/98     | 080118 | 5500    | 4864    | 4051     | 2977     | 5273     | 96,8      | 292     | 78        | 121   |                 |    |     |     |    |     |    |
| 2000 | Enercon     | 968  | Skörstorp 3,Skörstorp      | D7h           | 82/98     | 080118 | 5500    | 4957    | 4137     | 3067     | 5427     | 97,2      | 314     | 89        | 43    |                 |    |     |     |    |     |    |
| 2000 | Vestas      | 969  | Munkagård 1,Tväåker        | B5f           | 90/80     | 061220 | 5300    | 5533    | 4733     | 3063     | 5636     | 92,4      | 370     | 73        | 26    |                 |    |     |     |    |     |    |
| 2000 | Vestas      | 970  | Munkagård 2,Tväåker        | B5f           | 90/80     | 061220 | 5300    | 5482    | 5009     | 2907     | 5727     | 96,2      | 356     | 72        | 29    |                 |    |     |     |    |     |    |
| 2000 | Vestas      | 971  | Munkagård 3,Tväåker        | B5f           | 90/80     | 061220 | 5300    | 5366    | 5198     | 2948     | 5896     | 97,1      | 359     | 68        | 10    |                 |    |     |     |    |     |    |
| 2000 | Enercon     | 972  | Sundsholm,Luttra           | D7h           | 82/79     | 071219 | 4300    | 4480    | 3859     | 2696     | 4873     | 97,8      | 295     | 93        | 4     |                 |    |     |     |    |     |    |
| 2000 | Enercon     | 987  | Odarslöv 4,Lund            | C2f           | 71/63     | 080714 | 5400    | 4474    | 4364     | 2345     | 4532     | 96,3      | 271     | 81        | 124   |                 |    |     |     |    |     |    |
| 2000 | Enercon     | 988  | Univ. Wind Odarslöv 5,Lund | C2f           | 71/63     | 080714 | 5400    | 4432    | 4235     | 2438     | 4553     | 96,9      | 294     | 93        | 26    |                 |    |     |     |    |     |    |
| 2000 | Enercon     | 989  | Univ. Wind Odarslöv 6,Lund | C2f           | 71/63     | 080714 | 5400    | 4636    | 4447     | 2547     | 4805     | 98,3      | 358     | 93        | 16    |                 |    |     |     |    |     |    |
| 2000 | Enercon     | 1003 | Univ.Power Egby 1,Egby     | H5a           | 70/63     | 080815 | 5200    | 3488    | 3926     | 819      | 3099     | 98,7      |         |           |       |                 |    |     |     |    |     |    |
| 2000 | Enercon     | 1004 | Univ.Power Egby 2,Egby     | H5a           | 70/63     | 080816 | 5200    | 3273    | 3988     | 850      | 3158     | 99        |         |           |       |                 |    |     |     |    |     |    |
| 2000 | Enercon     | 1005 | Univ.Power Egby 3,Egby     | H5a           | 70/63     | 080817 | 5200    | 3500    | 3963     | 861      | 3142     | 97,7      |         |           |       |                 |    |     |     |    |     |    |
| 2000 | Enercon     | 1006 | Univ.Power Egby 4,Egby     | H5a           | 70/63     | 080818 | 5200    | 3404    | 3987     | 867      | 3205     | 98        |         |           |       |                 |    |     |     |    |     |    |
| 2000 | Enercon     | 1016 | Kvantenburg, Ekovind,Bolst | C9a           | 82/98     | 080520 | 5500    | 5056    | 5172     | 3044     | 5944     | 98,5      | 314     | 94        | 8     |                 |    |     |     |    |     |    |
| 2000 | Enercon     | 1034 | Kinne-Vedums Vind,Kinne-   | D8g           | 82/98     | 090120 | 4500    | 3447    | 3619     | 2746     | 4806     | 98,4      | 297     | 85        | 72    |                 |    |     |     |    |     |    |
| 2000 | Enercon     | 1047 | Silkomhöjden 1,Silkomhöjd  | E12d          | 82/98     | 081210 | 5200    | 3516    | 4430     | 2518     | 5086     | 96,4      | 289     | 97        | 0     |                 |    |     |     |    |     |    |
| 2000 | Enercon     | 1048 | Silkomhöjden 2,Silkomhöjd  | E12d          | 82/98     | 081210 | 5200    | 4460    | 5027     | 2878     | 5780     | 96,7      | 313     | 97        | 8     |                 |    |     |     |    |     |    |
| 2000 | Enercon     | 1049 | Silkomhöjden 3,Silkomhöjd  | E12d          | 82/98     | 081210 | 5200    | 3372    | 4167     | 2429     | 4911     | 99,4      | 261     | 97        | 0     |                 |    |     |     |    |     |    |
| 2000 | Enercon     | 1050 | Köjkeberget 4, Anders A,Va | E12d          | 82/98     | 090325 | 5200    | 3532    | 4860     | 2814     | 5525     | 96,5      | 301     | 97        | 2     |                 |    |     |     |    |     |    |
| 2000 | Enercon     | 1051 | Köjkeberget 5, Anders A,Va | E12d          | 82/98     | 090325 | 5200    | 3277    | 4756     | 2699     | 5529     | 98        | 284     | 97        | 3     |                 |    |     |     |    |     |    |
| 2000 | Enercon     | 1052 | Köjkeberget 6, Anders A,Va | E12d          | 82/98     | 090325 | 5200    | 3957    | 5124     | 2930     | 6165     | 98,4      | 324     | 97        | 2     |                 |    |     |     |    |     |    |
| 2000 | Vestas      | 1056 | Högberget Denise,Bjursås   | F13h          | 90/95     | 080807 | 5000    | 5507    | 5383     | 3327     | 6405     | 97        | 330     | 84        | 6     |                 |    |     |     |    |     |    |
| 2000 | Vestas      | 1057 | Högberget Herman,Bjursås   | F13h          | 90/95     | 080812 | 5000    | 5373    | 5625     | 3498     | 6735     | 99,2      | 340     | 85        | 7     |                 |    |     |     |    |     |    |
| 2000 | Vestas      | 1058 | Högberget Victoria,Bjursås | F13h          | 90/95     | 080814 | 5000    | 5289    | 5654     | 3503     | 6702     | 99,1      | 327     | 85        | 8     |                 |    |     |     |    |     |    |
| 2000 | Vestas      | 1059 | Högberget Ulrik,Bjursås    | F13h          | 90/95     | 080805 | 5000    | 5439    | 5643     | 3491     | 6679     | 98,5      | 332     | 84        | 7     |                 |    |     |     |    |     |    |
| 2000 | Vestas      | 1060 | Högberget Arne,Bjursås     | F13h          | 90/95     | 080804 | 5000    | 5257    | 5428     | 3325     | 6391     | 99,2      | 318     | 83        | 7     |                 |    |     |     |    |     |    |
| 2000 | Vestas      | 1061 | SOTARED nr 1 Elsa,Långå    | -             | 90/105    | 090201 | 6000    | 4544    | 5369     | 3085     | 6088     | 96,6      | 343     | 65        | 88    |                 |    |     |     |    |     |    |
| 2000 | Vestas      | 1062 | SOTARED nr 2 Ellen,Långå   | -             | 90/105    | 090201 | 6000    | 4702    | 5374     | 3060     | 6090     | 98,3      | 342     | 76        | 0     |                 |    |     |     |    |     |    |
| 2000 | Vestas      | 1063 | SOTARED nr 3 Ella,Långå    | -             | 90/105    | 090201 | 6000    | 4269    | 5070     | 2768     | 5594     | 97,4      | 318     | 72        | 4     |                 |    |     |     |    |     |    |
| 2000 | Vestas      | 1064 | SOTARED nr 4 Elise,Långå   | -             | 90/105    | 090201 | 6000    | 4327    | 4990     | 2689     | 5475     | 96,7      | 305     | 71        | 8     |                 |    |     |     |    |     |    |
| 2000 | Vestas      | 1065 | SOTARED nr 5 Elisabet,Lå   | -             | 90/105    | 090201 | 6000    | 4872    | 5261     | 3033     | 5941     | 97,3      | 336     | 72        | 34    |                 |    |     |     |    |     |    |
| 2000 | Enercon     | 1071 | Markbygden, Dragaliden 1,  | K24e          | 82/108    | 090101 | 6000    | 4617    | 4823     | 3125     | 5808     | 96,8      | 346     | 96        | 4     |                 |    |     |     |    |     |    |
| 2000 | Enercon     | 1072 | Markbygden, Dragaliden 2,  | K24e          | 82/108    | 090101 | 6000    | 4986    | 5377     | 3120     | 5904     | 96,5      | 350     | 94        | 18    |                 |    |     |     |    |     |    |
| 2000 | Enercon     | 1073 | Markbygden, Dragaliden 3,  | K24e          | 82/137    | 101001 | 6000    | 1332    | 3171     | 4502     | 93,9     | 261       | 76      | 149       |       |                 |    |     |     |    |     |    |
| 2000 | Enercon     | 1074 | Markbygden, Dragaliden 4,  | K24e          | 82/108    | 101101 | 6000    | 340     | 2833     | 3173     | 96,2     | 317       | 93      | 83        |       |                 |    |     |     |    |     |    |
| 2000 | Enercon     | 1075 | Markbygden, Dragaliden 5,  | K24e          | 82/108    | 101101 | 6000    | 647     | 2786     | 3433     | 97,3     | 318       | 93      | 17        |       |                 |    |     |     |    |     |    |
| 2000 | Enercon     | 1076 | Markbygden, Dragaliden 6,  | K24e          | 82/137    | 101101 | 6000    | 793     | 3444     | 4238     | 98,4     | 370       | 88      | 62        |       |                 |    |     |     |    |     |    |
| 2000 | Enercon     | 1077 | Markbygden, Dragaliden 7,  | K24e          | 82/108    | 101001 | 6000    | 791     | 2914     | 3705     | 97,9     | 323       | 92      | 26        |       |                 |    |     |     |    |     |    |
| 2000 | Enercon     | 1078 | Markbygden, Dragaliden 8,  | K24e          | 82/108    | 101101 | 6000    | 793     | 2792     | 3585     | 98,1     | 318       | 93      | 22        |       |                 |    |     |     |    |     |    |
| 2000 | Enercon     | 1079 | Markbygden, Dragaliden 9,  | K24e          | 82/108    | 101101 | 6000    | 510     | 2793     | 3303     | 98,4     | 323       | 96      | 1         |       |                 |    |     |     |    |     |    |
| 2000 | Enercon     | 1080 | Markbygden, Dragaliden 10, | K24e          | 82/108    | 101001 | 6000    | 1329    | 2669     | 3998     | 99,1     | 308       | 96      | 2         |       |                 |    |     |     |    |     |    |
| 2000 | Enercon     | 1081 | Markbygden, Dragaliden 11  | K24e          | 82/108    | 101001 | 6000    | 1349    | 2659     | 4008     | 98,1     | 312       | 95      | 6         |       |                 |    |     |     |    |     |    |
| 2000 | Enercon     | 1082 | Markbygden, Dragaliden 12  | K24e          | 82/108    | 101001 | 6000    | 1592    | 2716     | 4309     | 98,9     | 313       | 96      | 0         |       |                 |    |     |     |    |     |    |
| 2000 | Enercon     | 1086 | Egby 5,Borgholm            | H5a           | 70/64     | 090715 | 5200    | 1698    | 4139     | 2105     | 4425     | 95,2      | 194     | 95        | 0     |                 |    |     |     |    |     |    |
| 2000 | Vestas      | 1088 | Håberg 3,Flo               | C8d           | 90/105    | 090501 | 5200    | 3573    | 4775     | 3067     | 5829     | 98,4      | 322     | 73        | 26    |                 |    |     |     |    |     |    |
| 2000 | Vestas      | 1089 | Håberg 4,Flo               | C8d           | 90/105    | 090501 | 5200    | 3544    | 4884     | 3097     | 5896     | 99,1      | 320     | 75        | 16    |                 |    |     |     |    |     |    |
| 2000 | Vestas      | 1104 | Klinte 2,Klintehamn        | I6c           | 80/67     | 090725 | 5200    | 2053    | 4295     | 2658     | 5219     | 98,6      | 287     | 79        | 5     |                 |    | 5   |     |    |     |    |
| 2000 | Vestas      | 1105 | Klinte 3,Klintehamn        | I6c           | 80/67     | 090724 | 4800    | 1822    | 3667     | 2243     | 4492     | 98,5      | 228     | 74        | 0     |                 |    |     |     |    |     |    |
| 2000 | Vestas      | 1106 | Klinte 4,Klintehamn        | I6c           | 80/67     | 090723 | 5000    | 1819    | 3783     | 2317     | 4600     | 98        | 230     | 75        | 13    |                 |    |     |     |    |     |    |
| 2000 | Vestas      | 1107 | Klinte 5,Klintehamn        | I6c           | 80/67     | 090723 | 4800    | 1983    | 3970     | 2421     | 4753     | 97,3      | 259     | 77        | 2     |                 |    | 2   |     |    | 15  |    |
| 2000 | Vestas      | 1108 | Klinte 6,Klintehamn        | I6c           | 80/67     | 090723 | 5200    | 2197    | 4462     | 2846     | 5466     | 98,4      | 314     | 78        | 11    |                 |    |     |     |    | 11  |    |
| 2000 | Enercon     | 1109 | Lyby, Knivsta 1,Lyby       | D2g           | 82/78     | 090901 | 5200    | 1893    | 4467     | 2584     | 4807     | 95,9      | 293     | 94        | 24    |                 |    |     |     |    |     |    |
| 2000 | Enercon     | 1110 | Lyby, Svingan 1,Lyby       | D2g           | 82/78     | 090901 | 5200    | 1832    | 4469     | 2514     | 4728     | 97,7      | 272     | 87        | 65    |                 |    |     |     |    |     |    |
| 2000 | Vestas      | 1113 | Long Vind AB, Ivar,Long    | C8c           | 90/95     | 090914 | 5400    | 1863    | 5015     | 3210     | 6130     | 70,4      | 364     |           |       |                 |    |     |     |    |     |    |

| Ny * | Effekt (kW) |                                    | Fabrikat | Nr Anläggning | Placering | D/H  | I drift | Ber MWh | 2009 MWh | 2010 MWh | 2011 MWh | 12mån MWh | 12mån % | Månad MWh | Tid % | Hindertid (tim) |       |     |     |    |     |     |
|------|-------------|------------------------------------|----------|---------------|-----------|------|---------|---------|----------|----------|----------|-----------|---------|-----------|-------|-----------------|-------|-----|-----|----|-----|-----|
|      | Hög         | Låg                                |          |               |           |      |         |         |          |          |          |           |         |           |       | Benämning, Ort  | Karta | (m) | AHT | MS | YNS | ÖYS |
| 2000 | Enercon     | 1142 Blåsinge Espinge,Hurva        | C2i      | 82/78         | 100101    | 5600 |         | 4169    | 2817     | 5195     | 90,6     | 279       | 88      | 58        |       |                 |       |     |     |    |     |     |
| 2000 | Enercon     | 1143 Eslövs Vind Klemedstorp,H     | C2i      | 82/78         | 100101    | 5600 |         | 4450    | 2704     | 5349     | 90,9     | 298       | 95      | 7         |       |                 |       |     |     |    |     |     |
| 2000 | Enercon     | 1144 Eolus Klemedstorp,Hurva       | C2i      | 82/78         | 100101    | 5600 |         | 4420    | 2786     | 5462     | 92,8     | 290       | 90      | 44        |       |                 |       |     |     |    |     |     |
| 2000 | Enercon     | 1145 Göteneporten 1,Västermark     | D8g      | 82/98         | 091022    | 5000 |         | 533     | 3431     | 2615     | 4595     | 98,4      | 288     | 93        | 5     |                 |       |     |     |    |     |     |
| 2000 | Enercon     | 1146 Göteneporten 2,Västermark     | D8g      | 82/98         | 091026    | 5000 |         | 594     | 3122     | 2346     | 4205     | 94,2      | 255     | 92        | 17    |                 |       |     |     |    |     |     |
| 2000 | Enercon     | 1147 Göteneporten 3,Västermark     | D8d      | 82/98         | 091116    | 5000 |         | 283     | 3505     | 2543     | 4531     | 97,4      | 278     | 90        | 25    |                 |       |     |     |    |     |     |
| 2000 | Enercon     | 1148 Göteneporten 4,Nattorp, Lu    | D8d      | 82/98         | 091219    | 5000 |         |         | 3576     | 2628     | 4774     | 98,9      | 303     | 94        | 2     |                 |       |     |     |    |     |     |
| 2000 | Enercon     | 1149 Göteneporten 5,Nedersånn      | D8d      | 82/98         | 091219    | 5000 |         |         | 3615     | 2680     | 4794     | 97,7      | 303     | 94        | 3     |                 |       |     |     |    |     |     |
| 2000 | Enercon     | 1150 Göteneporten 6,Dalassjö, Lu   | D8g      | 82/98         | 091219    | 5000 |         |         | 2773     | 2315     | 4005     | 97,5      | 250     | 93        | 10    |                 |       |     |     |    |     |     |
| 2000 | Enercon     | 1157 Knäpplan vind I,Hjo           | E8a      | 82/97         | 100208    | 5000 |         |         | 4071     | 2779     | 5483     | 96,5      |         |           |       |                 |       |     |     |    |     |     |
| 2000 | Enercon     | 1158 Knäpplan vind II,Hjo          | E8a      | 82/97         | 100208    | 5000 |         |         | 4297     | 2847     | 5655     | 97,8      |         |           |       |                 |       |     |     |    |     |     |
| 2000 | Vestas      | 1165 Häcksta Vindpark 1,Hudiksv    | H16b     | 90/80         | 090313    | 5000 |         | 2743    | 3758     | 2344     | 4612     | 99,4      | 249     | 73        | 0     |                 |       |     |     |    |     |     |
| 2000 | Vestas      | 1166 Häcksta Vindpark 2,Hudiksv    | H16b     | 90/80         | 090313    | 5000 |         | 3084    | 3937     | 2391     | 4691     | 97,9      | 254     | 73        | 1     |                 |       |     |     |    |     |     |
| 2000 | Vestas      | 1167 Häcksta Vindpark 3,Hudiksv    | H16b     | 90/80         | 090313    | 5000 |         | 3225    | 4156     | 2566     | 4964     | 94,1      | 282     | 73        | 0     |                 |       |     |     |    |     |     |
| 2000 | Vestas      | 1168 Häcksta Vindpark 4,Hudiksv    | H16b     | 90/80         | 090313    | 5000 |         | 3523    | 4279     | 2737     | 5166     | 97,7      | 286     | 73        | 0     |                 |       |     |     |    |     |     |
| 2000 | Vestas      | 1169 Häcksta Vindpark 5,Hudiksv    | H16b     | 90/80         | 090313    | 5000 |         | 3125    | 4281     | 2545     | 5148     | 97,6      | 260     | 71        | 5     |                 |       |     |     |    |     |     |
| 2000 | Enercon     | 1170 Hörneå Vindpark 1,Hörnefo     | K20a     | 82/98         | 090827    | 5000 |         | 1684    | 4357     | 1665     | 4173     | 94,9      |         |           |       |                 |       |     |     |    |     |     |
| 2000 | Enercon     | 1171 Hörneå Vindpark 2,Hörnefo     | K20a     | 82/98         | 090827    | 5000 |         | 1478    | 4249     | 1675     | 4250     | 98,1      |         |           |       |                 |       |     |     |    |     |     |
| 2000 | Enercon     | 1172 Hörneå Vindpark 3,Hörnefo     | K20a     | 82/98         | 090827    | 5000 |         | 1665    | 4293     | 1634     | 4112     | 97,9      |         |           |       |                 |       |     |     |    |     |     |
| 2000 | Enercon     | 1173 Hörneå Vindpark 4,Hörnefo     | K20a     | 82/98         | 090827    | 5000 |         | 1692    | 4385     | 1678     | 4215     | 98,1      |         |           |       |                 |       |     |     |    |     |     |
| 2000 | Enercon     | 1174 Hörneå Vindpark 5,Hörnefo     | K20a     | 82/98         | 090827    | 5000 |         | 1625    | 4305     | 1630     | 4125     | 97,9      |         |           |       |                 |       |     |     |    |     |     |
| 2000 | Enercon     | 1175 Hörneå Vindpark 6,Hörnefo     | K20a     | 82/98         | 090827    | 5000 |         | 1355    | 4050     | 1682     | 4115     | 97,6      |         |           |       |                 |       |     |     |    |     |     |
| 2000 | Vestas      | 1176 Hörneå Vindpark 7,Hörnefo     | K20a     | 90/98         | 091215    | 5000 |         |         | 4609     | 2503     | 5298     | 99,1      | 301     | 76        | 0     |                 |       |     |     |    |     |     |
| 2000 | Vestas      | 1177 Hörneå Vindpark 8,Hörnefo     | K20a     | 90/98         | 091215    | 5000 |         |         | 4823     | 2526     | 5288     | 98,7      | 299     | 76        | 7     |                 |       |     |     |    |     |     |
| 2000 | Vestas      | 1178 Hörneå Vindpark 9,Hörnefo     | K20a     | 90/98         | 091215    | 5000 |         |         | 4924     | 2477     | 5097     | 99,5      | 284     | 74        | 6     |                 |       |     |     |    |     |     |
| 2000 | Vestas      | 1179 Hörneå Vindpark 10,Hörnef     | K20a     | 90/98         | 091215    | 5000 |         |         | 5114     | 2561     | 5370     | 99,3      | 291     | 75        | 0     |                 |       |     |     |    |     |     |
| 2000 | Vestas      | 1180 Hörneå Vindpark 11,Hörnef     | K20a     | 90/98         | 091215    | 5000 |         |         | 5342     | 2745     | 5706     | 99,6      | 303     | 76        | 0     |                 |       |     |     |    |     |     |
| 2000 | Enercon     | 1183 Brostorp 5:2 Höör,Snoogerö    | D2g      | 82/98         | 100304    | 5500 |         |         | 3396     | 2723     | 5171     | 97        | 303     | 91        | 24    |                 |       |     |     |    |     |     |
| 2000 | Enercon     | 1184 Gärdslösa 1,Gärdslösa         | H4g      | 82/78         | 100301    | 5100 |         |         | 3787     | 2588     | 5247     | 98        | 244     | 92        | 6     |                 |       |     |     |    |     |     |
| 2000 | Enercon     | 1185 Gärdslösa 2,Gärdslösa         | H4g      | 82/78         | 100301    | 5100 |         |         | 3427     | 2362     | 4761     | 94,5      | 217     | 86        | 71    |                 |       |     |     |    |     |     |
| 2000 | Enercon     | 1186 Gärdslösa 3, Elsa,Gärdslös    | H4g      | 82/78         | 100301    | 5100 |         |         | 3666     | 2434     | 4946     | 96        | 219     | 88        | 56    |                 |       |     |     |    |     |     |
| 2000 | Enercon     | 1187 Gärdslösa 4,Gärdslösa         | H4g      | 82/78         | 100301    | 5100 |         |         | 3749     | 2342     | 4845     | 96,6      | 208     | 89        | 49    |                 |       |     |     |    |     |     |
| 2000 | Enercon     | 1188 Gärdslösa 5,Gärdslösa         | H4g      | 82/78         | 100301    | 5100 |         |         | 3574     | 2442     | 5025     | 97,2      | 226     | 88        | 38    |                 |       |     |     |    |     |     |
| 2000 | Enercon     | 1190 Påboda 1,Påboda               | G4b      | 82/98         | 100301    | 4900 |         |         | 4273     | 2490     | 5347     | 96,9      | 247     | 66        | 9     |                 |       |     |     |    |     |     |
| 2000 | Enercon     | 1191 Påboda 2,Påboda               | G4b      | 82/98         | 100301    | 4900 |         |         | 4202     | 2502     | 5358     | 96,6      | 282     | 72        | 66    |                 |       |     |     |    |     |     |
| 2000 | Vestas      | 1222 Vallerstad, Gudrun,Vallerst   | D5i      | 90/105        | 091201    | 6000 |         | 400     | 6339     | 3542     | 7073     | 98,8      | 408     | 82        | 6     |                 |       |     |     |    |     |     |
| 2000 | Vestas      | 1223 Vallerstad, Mathilda,Vallerst | D5i      | 90/105        | 091209    | 6000 |         |         | 5965     | 3478     | 6773     | 98,3      | 396     | 81        | 8     |                 |       |     |     |    |     |     |
| 2000 | Vestas      | 1228 Holmsund 3,Holmsund           | K20e     | 90/80         | 070501    |      |         |         | 1918     | 2499     | 4417     | 89,3      | 410     | 79        | 5     |                 |       |     |     |    |     |     |
| 2000 | Enercon     | 1230 Ugglum 1-Ugglum Vindpark      | C9a      | 82/108        | 090821    | 5500 |         | 1767    | 5169     | 3118     | 5899     | 91,9      | 335     | 95        | 3     |                 |       |     |     |    |     |     |
| 2000 | Enercon     | 1231 Ugglum 2-Ugglum Vindpark      | C9a      | 82/108        | 090901    | 5500 |         | 1352    | 4780     | 3041     | 5949     | 95,2      | 337     | 95        | 3     |                 |       |     |     |    |     |     |
| 2000 | Vestas      | 1232 Gunnarstorp, Sven,Flakebe     | C8e      | 90/95         | 100601    | 5400 |         |         | 2714     | 2966     | 5462     | 96,9      | 331     | 76        | 4     |                 |       |     |     |    |     |     |
| 2000 | Vestas      | 1233 Gunnarstorp, Malte,Flakebe    | C8e      | 90/95         | 100601    | 5400 |         |         | 2815     | 2932     | 5528     | 98,3      | 332     | 75        | 8     |                 |       |     |     |    |     |     |
| 2000 | Vestas      | 1234 Gunnarstorp, Astrid,Flakeb    | C8e      | 90/95         | 100601    | 5400 |         |         | 2848     | 2133     | 4765     | 98,2      |         |           |       |                 |       |     |     |    |     |     |
| 2000 | Vestas      | 1235 Ulvstorp, Djerf,Flakeberg G   | C8e      | 90/95         | 100601    | 5200 |         |         | 2617     | 2869     | 5271     | 98,3      | 296     | 73        | 16    |                 |       |     |     |    |     |     |
| 2000 | Vestas      | 1236 Ulvstorp, Emil,Flakeberg Gu   | C8e      | 90/95         | 100601    | 5200 |         |         | 2615     | 2846     | 5279     | 98,9      | 302     | 75        | 12    |                 |       |     |     |    |     |     |
| 2000 | Enercon     | 1237 Ringsjö Vind,Snoogeröd        | D2g      | 82/98         | 100501    | 5000 |         |         | 3034     | 2472     | 4940     | 93,8      | 293     | 92        | 26    |                 |       |     |     |    |     |     |
| 2000 | Enercon     | 1238 Solberga 1,Korsberga          | E8a      | 82/108        | 100111    | 5300 |         |         | 3086     | 3148     | 5590     | 97,8      | 382     | 91        | 46    |                 |       |     |     |    |     |     |
| 2000 | Enercon     | 1239 Åsperöd 1,Åsperöd             | D2e      | 82/78         | 100601    | 5400 |         |         | 3079     | 1900     | 4084     | 94,4      |         |           |       |                 |       |     |     |    |     |     |
| 2000 | Vestas      | 1240 Lärstad 1,Motala              | F8g      | 90/90         | 100517    | 5400 |         |         | 1768     | 3551     | 5319     | 96,4      | 440     | 84        | 21    |                 |       |     |     |    |     |     |
| 2000 | Vestas      | 1241 Lärstad 2,Motala              | F8g      | 90/90         | 100524    | 5400 |         |         | 1734     | 3555     | 5289     | 97,3      | 450     | 86        | 14    |                 |       |     |     |    |     |     |
| 2000 | Vestas      | 1242 Västraby V90 NO,Västraby      | D2g      | 90/78         | 100601    | 5400 |         |         | 3270     | 3058     | 5693     | 97,6      | 340     | 79        | 1     |                 |       |     |     |    |     |     |
| 2000 | Vestas      | 1243 Lyngbygård 4, Ingeborg,Lyn    | D2i      | 90/95         | 100701    | 5200 |         |         | 1523     | 2538     | 4061     | 96,6      | 342     | 80        | 0     |                 |       |     |     |    |     |     |
| 2000 | Enercon     | 1245 Närefors 1,Järpås             | C8f      | 82/98         | 100710    | 5300 |         |         | 1776     | 2994     | 4770     | 99        | 319     | 91        | 3     |                 |       |     |     |    |     |     |
| 2000 | Enercon     | 1246 Närefors 2,Järpås             | C8f      | 82/98         | 100710    | 5300 |         |         | 1448     | 3100     | 4548     | 94,3      | 316     | 89        | 19    |                 |       |     |     |    |     |     |
| 2000 | Vestas      | 1248 Tumleberg 4,Tumleberg         | C8b      | 90/105        | 090901    | 5400 |         |         | 3968     | 2834     | 5237     | 97,8      | 321     | 75        | 17    |                 |       |     |     |    |     |     |
| 2000 | Vestas      | 1249 Tumleberg 5,Tumleberg         | C8b      | 90/105        | 090901    | 5400 |         |         | 4112     | 2666     | 5050     | 97,7      | 310     | 73        | 27    |                 |       |     |     |    |     |     |
| 2000 | Vestas      | 1254 Näs Drift AB, Backgården,N    | D7h      | 90/105        | 100720    | 5400 |         |         | 1464     | 3215     | 4679     | 96,9      | 351     | 77        | 24    |                 |       |     |     |    |     |     |
| 2000 | Vestas      | 1255 Näs Drift AB, Björstorp,Vart  | D7h      | 90/105        | 100720    | 5400 |         |         | 1590     | 3279     | 4868     | 97,9      | 366     | 79        | 12    |                 |       |     |     |    |     |     |
| 2000 | Enercon     | 1256 Åsperöd 2,Åsperöd             | D2e      | 82/78         | 100601    | 5400 |         |         | 1469     | 1825     | 3294     | 93,4      |         |           |       |                 |       |     |     |    |     |     |
| 2000 | Enercon     | 1258 Ramdala 1,Ramdala             | F3f      | 82/98         | 100901    | 5400 |         |         | 1762     | 2944     | 4706     | 98,1      | 322     | 93        | 15    |                 |       |     |     |    |     |     |
| 2000 | Enercon     | 1259 Ramdala 2,Ramdala             | F3f      | 82/98         | 100901    | 5400 |         |         | 1775     | 3001     | 4776     | 98,9      | 333     | 94        | 11    |                 |       |     |     |    |     |     |
| 2000 | Enercon     | 1260 Skarstad,Skarstad             | C8c      | 82/98         | 100618    | 5200 |         |         | 2691     | 3103     | 5794     | 99,3      | 367     | 92        | 0     |                 |       |     |     |    |     |     |
| 2000 | Enercon     | 1261 Stockeback,Lundsbrunn         | D8g      | 82/108        | 100618    | 5200 |         |         | 1274     | 2975     | 4249     | 97,7      | 343     | 90        | 35    |                 |       |     |     |    |     |     |
| 2000 | Vestas      | 1262 Havnäs Vindkraftpark D1,H     | F21c     | 90/95         | 100705    | 5337 |         |         | 1565     | 3659     | 5224     | 98,3      | 431     | 81        | 7     |                 |       |     |     |    |     |     |
| 2000 | Vestas      | 1263 Havnäs Vindkraftpark D2,H     | F21c     | 90/95         | 100705    | 5337 |         |         | 1412     | 3345     | 4757     | 98,3      | 335     | 79        | 10    |                 |       |     |     |    |     |     |
| 2000 | Vestas      | 1264 Havnäs Vindkraftpark D3,H     | F21c     | 90/95         | 100705    | 5337 |         |         | 1463     | 3378     | 4841     | 98,3      | 414     | 81        | 7     |                 |       |     |     |    |     |     |
| 2000 | Vestas      | 1265 Havnäs Vindkraftpark D4,H     | F21c     | 90/95         | 100705    | 5337 |         |         | 1435     | 3258     | 4693     | 98,1      | 338     | 81        | 8     |                 |       |     |     |    |     |     |
| 2000 | Vestas      | 1266 Havnäs Vindkraftpark D5,H     | F21c     | 90/95         | 100705    | 5337 |         |         | 1404     | 3307     | 4711     | 98,4      | 408     | 81        | 7     |                 |       |     |     |    |     |     |
| 2000 | Vestas      | 1267 Havnäs Vindkraftpark D6,H     | F21c     | 90/95         | 100705    | 5337 |         |         | 1566     | 3480     | 5046     | 98,4      | 410     | 81        | 8     |                 |       |     |     |    |     |     |
| 2000 | Vestas      | 1268 Havnäs Vindkraftpark D7,H     | F21c     | 90/95         | 100705    | 5337 |         |         | 1691     | 3685     | 5376     | 98,6      | 386     | 82        | 7     |                 |       |     |     |    |     |     |
| 2000 | Vestas      | 1269 Havnäs Vindkraftpark D8,H     | F21c     | 90/95         | 100705    | 5337 |         |         | 1604     | 3567     | 5171     | 98,1      | 366     | 82        | 7     |                 |       |     |     |    |     |     |
| 2000 | Vestas      | 1270 Havnäs Vindkraftpark D9,H     | F21c     | 90/95         | 100705    | 5337 |         |         | 1529     | 3357     | 4885     | 98,1      | 403     | 82        | 7     |                 |       |     |     |    |     |     |
| 2000 | Vestas      | 1271 Havnäs Vindkraft              |          |               |           |      |         |         |          |          |          |           |         |           |       |                 |       |     |     |    |     |     |

| Ny * | Effekt (kW)<br>Hög | Fabrikat<br>Låg | Nr<br>Anläggning | Anläggning<br>Benämning, Ort | Placering<br>Karta | D/H<br>(m) | I drift | Ber<br>MWh | 2009 | 2010 | 2011 | 12mån | 12mån | Månad | Tid | Hindertid (tim) |    |     |     |    |     |    |
|------|--------------------|-----------------|------------------|------------------------------|--------------------|------------|---------|------------|------|------|------|-------|-------|-------|-----|-----------------|----|-----|-----|----|-----|----|
|      |                    |                 |                  |                              |                    |            |         |            | MWh  | MWh  | MWh  | MWh   | %     | MWh   | %   | AHT             | MS | YNS | ÖYS | PU | ÖPS | TF |
| 2000 |                    | Vestas          | 1294             | Havnäs Vindkraftpark F1,H    | F21c               | 90/95      | 100705  | 5337       |      | 1831 | 3233 | 5064  | 98,2  | 399   | 80  | 10              |    |     |     |    |     |    |
| 2000 |                    | Vestas          | 1295             | Havnäs Vindkraftpark F2,H    | F21c               | 90/95      | 100705  | 5337       |      | 1888 | 3287 | 5174  | 98    | 408   | 82  | 14              |    |     |     |    |     |    |
| 2000 |                    | Vestas          | 1296             | Havnäs Vindkraftpark F3,H    | F21c               | 90/95      | 100705  | 5337       |      | 1621 | 2881 | 4502  | 98,2  | 346   | 77  | 20              |    |     |     |    |     |    |
| 2000 |                    | Vestas          | 1297             | Havnäs Vindkraftpark F4,H    | F21c               | 90/95      | 100705  | 5337       |      | 1709 | 2764 | 4473  | 98,5  | 314   | 80  | 8               |    |     |     |    |     |    |
| 2000 |                    | Vestas          | 1298             | Havnäs Vindkraftpark F5,H    | F21c               | 90/95      | 100705  | 5337       |      | 1468 | 2833 | 4300  | 98,4  | 337   | 79  | 13              |    |     |     |    |     |    |
| 2000 |                    | Vestas          | 1299             | Havnäs Vindkraftpark F6,H    | F21c               | 90/95      | 100705  | 5337       |      | 1716 | 2905 | 4622  | 98,6  | 322   | 81  | 7               |    |     |     |    |     |    |
| 2000 |                    | Vestas          | 1300             | Havnäs Vindkraftpark F7,H    | F21c               | 90/95      | 100705  | 5337       |      | 1594 | 2734 | 4328  | 98,6  | 304   | 79  | 13              |    |     |     |    |     |    |
| 2000 |                    | Vestas          | 1301             | Havnäs Vindkraftpark F8,H    | F21c               | 90/95      | 100705  | 5337       |      | 1817 | 3317 | 5134  | 98,3  | 388   | 81  | 15              |    |     |     |    |     |    |
| 2000 |                    | Vestas          | 1302             | Havnäs Vindkraftpark F9,H    | F21c               | 90/95      | 100705  | 5337       |      | 1582 | 2882 | 4463  | 97,8  | 344   | 79  | 14              |    |     |     |    |     |    |
| 2000 |                    | Vestas          | 1303             | Havnäs Vindkraftpark F10,    | F21c               | 90/95      | 100705  | 5337       |      | 1435 | 2790 | 4225  | 98,1  | 280   | 76  | 19              |    |     |     |    |     |    |
| 2000 |                    | Vestas          | 1304             | Havnäs Vindkraftpark F11,    | F21c               | 90/95      | 100705  | 5337       |      | 1532 | 2679 | 4211  | 98,2  | 279   | 78  | 14              |    |     |     |    |     |    |
| 2000 |                    | Vestas          | 1305             | Havnäs Vindkraftpark F12,    | F21c               | 90/95      | 100705  | 5337       |      | 1766 | 3116 | 4881  | 98,5  | 392   | 79  | 7               |    |     |     |    |     |    |
| 2000 |                    | Vestas          | 1306             | Havnäs Vindkraftpark F13,    | F21c               | 90/95      | 100705  | 5337       |      | 1748 | 3079 | 4827  | 97,9  | 310   | 76  | 30              |    |     |     |    |     |    |
| 2000 |                    | Vestas          | 1307             | Havnäs Vindkraftpark F14,    | F21c               | 90/95      | 100705  | 5337       |      | 1702 | 3196 | 4898  | 98,5  | 373   | 78  | 16              |    |     |     |    |     |    |
| 2000 |                    | Vestas          | 1308             | Havnäs Vindkraftpark F15,    | F21c               | 90/95      | 100705  | 5337       |      | 1698 | 3176 | 4874  | 98,3  | 362   | 77  | 17              |    |     |     |    |     |    |
| 2000 |                    | Vestas          | 1309             | Havnäs Vindkraftpark F16,    | F21c               | 90/95      | 100705  | 5337       |      | 1702 | 3151 | 4853  | 98,2  | 326   | 77  | 17              |    |     |     |    |     |    |
| 2000 |                    | Enercon         | 1310             | Långå 6,Långå                | D17e               | 82/98      | 100501  |            |      | 1382 | 2704 | 4086  | 98,7  | 312   | 89  | 18              |    |     |     |    |     |    |
| 2000 |                    | Enercon         | 1311             | Långå 7,Långå                | D17e               | 82/98      | 100501  |            |      | 1361 | 2735 | 4097  | 97,9  | 310   | 87  | 26              |    |     |     |    |     |    |
| 2000 |                    | Vestas          | 1313             | Källeberg 1,Källeberg        | D7h                | 90/105     | 100701  | 5400       |      | 990  | 3151 | 4141  | 98,9  | 318   | 74  | 15              |    |     |     |    |     |    |
| 2000 |                    | Vestas          | 1314             | Källeberg 2,Källeberg        | D7h                | 90/105     | 100701  | 5400       |      | 953  | 3112 | 4065  | 98,9  | 327   | 77  | 13              |    |     |     |    |     |    |
| 2000 |                    | Vestas          | 1315             | Källeberg 3,Källeberg        | D7h                | 90/105     | 100701  | 5400       |      | 613  | 2976 | 3589  | 98,9  | 319   | 77  | 14              |    |     |     |    |     |    |
| 2000 |                    | Vestas          | 1316             | Källeberg 4,Källeberg        | D7h                | 90/105     | 100701  | 5400       |      | 978  | 3304 | 4282  | 99,3  | 347   | 74  | 7               |    |     |     |    |     |    |
| 2000 |                    | Vestas          | 1317             | Källeberg 5,Källeberg        | D7h                | 90/105     | 100701  | 5400       |      | 983  | 3135 | 4118  | 99,4  | 333   | 76  | 14              |    |     |     |    |     |    |
| 2000 |                    | Vestas          | 1319             | Bliekeväre 6,Bliekeväre      | F22f               | 90/95      | 090415  | 5000       |      | 800  | 2650 | 3450  | 99,6  | 373   | 82  | 0               |    |     |     |    |     |    |
| 2000 |                    | Vestas          | 1320             | Orust , lleberg 1:Syd,Härleb | B8a                | 90/95      | 101018  | 5300       |      | 1417 | 3000 | 4417  | 98,5  | 364   | 87  | 2               |    |     |     |    |     |    |
| 2000 |                    | Vestas          | 1321             | Orust , lleberg 2:Väst,Härle | B8a                | 90/95      | 101018  | 5300       |      | 1382 | 3008 | 4390  | 98,8  | 361   | 88  | 4               |    |     |     |    |     |    |
| 2000 |                    | Vestas          | 1322             | Orust , lleberg 3:Öst,Härleb | B8a                | 90/95      | 101018  | 5300       |      | 1346 | 3033 | 4380  | 98,2  | 344   | 84  | 24              |    |     |     |    |     |    |
| 2000 |                    | Vestas          | 1323             | FloSal 1,Astranna Gård       | C8d                | 90/105     | 090501  | 5500       | 3640 | 5119 | 3225 | 6198  | 98,4  | 347   | 74  | 20              |    |     |     |    |     |    |
| 2000 |                    | Vestas          | 1324             | FloSal 2,Astranna Gård       | C8d                | 90/105     | 090917  | 5500       |      | 1711 | 3279 | 4990  | 94,2  | 377   | 80  | 1               |    |     |     |    |     |    |
| 2000 |                    | Vestas          | 1325             | Götala 1,Motala              | F8d                | 90/105     | 101029  | 5300       |      | 1638 | 2623 | 4260  | 97,5  | 417   | 87  | 17              |    |     |     |    |     |    |
| 2000 |                    | Vestas          | 1326             | Götala 2,Motala              | F8d                | 90/105     | 101029  | 5300       |      | 1626 | 3329 | 4956  | 97    | 415   | 89  | 2               |    |     |     |    |     |    |
| 2000 |                    | Vestas          | 1327             | Götala 3,Motala              | F8d                | 90/105     | 101029  | 5300       |      | 1663 | 3301 | 4963  | 97,2  | 428   | 89  | 3               |    |     |     |    |     |    |
| 2000 |                    | Vestas          | 1328             | Götala 4,Motala              | F8d                | 90/105     | 101029  | 5300       |      | 515  | 3323 | 3838  | 98,6  | 411   | 89  | 3               |    |     |     |    |     |    |
| 2000 |                    | Vestas          | 1329             | Tavelberget 1,Linghed        | G14a               | 90/105     | 100818  | 6500       |      | 2311 | 3903 | 6214  | 94,3  | 357   | 89  | 0               |    |     |     |    |     |    |
| 2000 |                    | Vestas          | 1330             | Tavelberget 2,Linghed        | G13g               | 90/105     | 100822  | 6500       |      | 2175 | 3575 | 5751  | 95,8  | 353   | 89  | 0               |    |     |     |    |     |    |
| 2000 |                    | Vestas          | 1331             | Tavelberget 3,Linghed        | G13g               | 90/105     | 100908  | 6500       |      | 1922 | 3566 | 5489  | 98,6  | 354   | 88  | 0               |    |     |     |    |     |    |
| 2000 |                    | Vestas          | 1332             | Tavelberget 4,Linghed        | G13g               | 90/105     | 100826  | 6500       |      | 2677 | 3811 | 6488  | 97,4  | 391   | 86  | 0               |    |     |     |    |     |    |
| 2000 |                    | Vestas          | 1333             | Tavelberget 5,Linghed        | G13g               | 90/105     | 100904  | 6500       |      | 2064 | 3477 | 5541  | 98,8  | 360   | 88  | 1               |    |     |     |    |     |    |
| 2000 |                    | Vestas          | 1334             | Topperyd verk 3,Topperyd     | E6h                | 90/105     | 101202  | 5100       |      | 3420 | 3420 | 99,4  | 373   | 83    | 14  |                 |    |     |     |    |     |    |
| 2000 |                    | Vestas          | 1347             | Bliekeväre 10,Norråker       | F22f               | 90/80      | 101001  | 5356       |      | 2286 | 2286 | 99,7  | 379   | 82    | 2   |                 |    |     |     |    |     |    |
| 2000 |                    | Vestas          | 1348             | Bliekeväre 11,Norråker       | F22f               | 90/80      | 101001  | 5069       |      | 2099 | 2099 | 98,2  | 404   | 82    | 3   |                 |    |     |     |    |     |    |
| 2000 |                    | Vestas          | 1349             | Bliekeväre 12,Norråker       | F22f               | 90/80      | 101001  | 4683       |      | 1907 | 1907 | 99,7  | 343   | 79    | 0   |                 |    |     |     |    |     |    |
| 2000 |                    | Vestas          | 1350             | Bliekeväre 13,Norråker       | F22f               | 90/80      | 101001  | 5597       |      | 2397 | 2397 | 99,5  | 456   | 82    | 2   |                 |    |     |     |    |     |    |
| 2000 |                    | Vestas          | 1351             | Bliekeväre 14,Norråker       | F22f               | 90/80      | 101001  | 5696       |      | 2277 | 2277 | 98,5  | 405   | 78    | 51  |                 |    |     |     |    |     |    |
| 2000 |                    | Vestas          | 1352             | Bliekeväre 15,Norråker       | F22f               | 90/80      | 101001  | 5733       |      | 2304 | 2304 | 98,2  | 406   | 74    | 62  |                 |    |     |     |    |     |    |
| 2000 |                    | Vestas          | 1353             | Bliekeväre 16,Norråker       | F22f               | 90/80      | 101001  | 5127       |      | 1995 | 1995 | 97,7  | 327   | 69    | 93  |                 |    |     |     |    |     |    |
| 2000 |                    | Vestas          | 1354             | Bliekeväre 17,Norråker       | F22f               | 90/80      | 101001  | 4972       |      | 2098 | 2098 | 99,6  | 369   | 79    | 14  |                 |    |     |     |    |     |    |
| 2000 |                    | Vestas          | 1356             | Strömstad, Neanberg 1 Nor    | A9i                | 90/95      | 101201  | 5400       |      | 1896 | 1896 | 99,2  | 298   | 80    | 36  |                 |    |     |     |    |     |    |
| 2000 |                    | Vestas          | 1357             | Strömstad, Neanberg 2 Mitt   | A9i                | 90/95      | 101201  | 5400       |      | 1749 | 1749 | 98,9  | 299   | 81    | 14  |                 |    |     |     |    |     |    |
| 2000 |                    | Vestas          | 1358             | Strömstad, Neanberg 3 Syd    | A9i                | 90/95      | 101201  | 5400       |      | 1854 | 1854 | 99,5  | 325   | 85    | 2   |                 |    |     |     |    |     |    |
| 2000 |                    | Vestas          | 1360             | Brasmaviken, Pelekulla 1,F   | E8g                | 90/105     | 101215  | 5200       |      | 2127 | 2127 | 99,4  | 465   | 96    | 1   |                 |    |     |     |    |     |    |
| 2000 |                    | Vestas          | 1361             | Brasmaviken, Pelekulla 2,F   | E8g                | 90/105     | 101215  | 5200       |      | 1895 | 1895 | 97,2  | 253   | 63    | 238 |                 |    |     |     |    |     |    |
| 2000 |                    | Enercon         | 1362             | Prässeberg 1 Mitt, Lilla Ede | B8c                | 82/98      | 100901  | 5500       |      | 1700 | 1700 | 98,9  | 292   | 88    | 53  |                 |    |     |     |    |     |    |
| 2000 |                    | Enercon         | 1363             | Prässeberg 2 Väst, Lilla Ed  | B8c                | 82/98      | 100901  | 5500       |      | 1552 | 1552 | 98,2  | 279   | 92    | 30  |                 |    |     |     |    |     |    |
| 2000 |                    | Enercon         | 1364             | Prässeberg 3 Öst, Lilla Edet | B8c                | 82/98      | 100901  | 5500       |      | 1395 | 1395 | 98,2  | 228   | 90    | 37  |                 |    |     |     |    |     |    |
| 2000 |                    | Vestas          | 1365             | Topperyd 1,Topperyd          | E6h                | 90/105     | 101201  | 5200       |      | 1913 | 1913 | 98,6  | 370   | 89    | 12  |                 |    |     |     |    |     |    |
| 2000 |                    | Vestas          | 1366             | Topperyd 2,Topperyd          | E6h                | 90/105     | 101201  | 5200       |      | 1870 | 1870 | 99,4  | 337   | 88    | 8   |                 |    |     |     |    |     |    |
| 2000 |                    | Vestas          | 1367             | Topperyd 4,Topperyd          | E6h                | 90/105     | 101201  | 5200       |      | 1916 | 1916 | 99,5  | 346   | 88    | 6   |                 |    |     |     |    |     |    |
| 2000 |                    | Enercon         | 1368             | Skånings Åsaka 1,Skånings    | D8d                | 82/98      | 100820  | 5000       |      | 1804 | 1804 | 99,6  | 332   | 94    | 2   |                 |    |     |     |    |     |    |
| 2000 |                    | Enercon         | 1369             | Skånings Åsaka 2,Skånings    | D8d                | 82/98      | 100820  | 5000       |      | 1049 | 1049 | 99,4  | 293   | 94    | 2   |                 |    |     |     |    |     |    |
| 2000 |                    | Enercon         | 1370             | Skånings Åsaka 3,Skånings    | D8d                | 82/98      | 100820  | 5000       |      | 1109 | 1109 | 98,9  | 266   | 84    | 72  |                 |    |     |     |    |     |    |
| 2000 |                    | Enercon         | 1381             | Rodovålen 4,Vemhån           | E17a               | 82/98      | 100608  | 6000       |      | 1101 | 1101 | 96,6  | 389   | 91    | 42  |                 |    |     |     |    |     |    |
| 2000 |                    | Enercon         | 1382             | Rodovålen 5,Vemhån           | E17a               | 82/98      | 100608  | 6000       |      | 1039 | 1039 | 95,1  | 379   | 85    | 80  |                 |    |     |     |    |     |    |
| 2000 |                    | Enercon         | 1383             | Rodovålen 6,Vemhån           | E17a               | 82/98      | 100608  | 6000       |      | 1194 | 1194 | 98,3  | 380   | 90    | 55  |                 |    |     |     |    |     |    |
| 2000 |                    | Vestas          | 1387             | Långberget 1,Arbrå           | G15f               | 90/105     | 110201  | 5670       |      |      | 783  | 783   | 99,2  | 375   | 87  | 3               |    |     |     |    |     |    |
| 2000 |                    | Vestas          | 1388             | Långberget 2,Arbrå           | G15c               | 90/105     | 110201  | 5670       |      |      | 764  | 764   | 99,7  | 342   | 84  | 5               |    |     |     |    |     |    |
| 2000 |                    | Vestas          | 1389             | Långberget 3,Arbrå           | G15f               | 90/105     | 110201  | 5670       |      |      | 751  | 751   | 99,2  | 346   | 87  | 3               |    |     |     |    |     |    |
| 2000 |                    | Enercon         | 1390             | Söderbodane 2,Söderboda      | C9g                | 82/108     | 110107  | 4750       |      | 2528 | 2528 | 97,4  | 280   | 0     | 1   |                 |    |     |     |    |     |    |
| 2000 |                    | Enercon         | 1391             | Söderbodane 3,Söderboda      | C9g                | 82/108     | 110107  | 4500       |      | 2489 | 2489 | 98,2  | 276   | 0     | 1   |                 |    |     |     |    |     |    |
| 2000 |                    | Vestas          | 1395             | Herrberga 1,Mjölby           | F8d                | 90/105     | 110228  | 5200       |      | 437  | 437  | 99,8  | 437   | 87    | 14  |                 |    |     |     |    |     |    |
| 2000 |                    | Vestas          | 1396             | Herrberga 2,Mjölby           | F8d                | 90/105     | 110228  | 5200       |      | 387  | 387  | 99    | 387   | 78    | 81  |                 |    |     |     |    |     |    |
| 2000 |                    | Vestas          | 1397             | Herrberga 3,Mjölby           | F8d                | 90/10      |         |            |      |      |      |       |       |       |     |                 |    |     |     |    |     |    |

| Ny * | Effekt (kW) |      | Fabrikat                   | Nr Anläggning | Placering | D/H    | I drift | Ber MWh | 2009 MWh | 2010 MWh | 2011 MWh | 12mån MWh | 12mån % | Månad MWh | Tid % | Hindertid (tim) |    |     |     |    |     |    |
|------|-------------|------|----------------------------|---------------|-----------|--------|---------|---------|----------|----------|----------|-----------|---------|-----------|-------|-----------------|----|-----|-----|----|-----|----|
|      | Hög         | Låg  |                            |               |           |        |         |         |          |          |          |           |         |           |       | AHT             | MS | YNS | ÖYS | PU | ÖPS | TF |
| 2300 | Siemens     | 891  | Lillgrund A-02,Offshore    | C2a           | 92,4/69   | 071020 | 6875    | 6762    | 6444     | 3145     | 6620     | 98,8      | 317     | 0         |       |                 |    |     |     |    |     |    |
| 2300 | Siemens     | 892  | Lillgrund A-03,Offshore    | C2a           | 92,4/69   | 071021 | 6875    | 6623    | 6437     | 3271     | 6744     | 98,8      | 325     | 0         |       |                 |    |     |     |    |     |    |
| 2300 | Siemens     | 893  | Lillgrund A-04,Offshore    | C2a           | 92,4/69   | 071022 | 6875    | 6885    | 6488     | 3327     | 6812     | 98,8      | 352     | 0         |       |                 |    |     |     |    |     |    |
| 2300 | Siemens     | 894  | Lillgrund A-05,Offshore    | C2a           | 92,4/69   | 071024 | 6875    | 6873    | 6451     | 3259     | 6720     | 98,7      | 327     | 0         |       |                 |    |     |     |    |     |    |
| 2300 | Siemens     | 895  | Lillgrund A-06,Offshore    | C2a           | 92,4/69   | 071022 | 6875    | 7216    | 6468     | 3516     | 6895     | 98,8      | 369     | 0         |       |                 |    |     |     |    |     |    |
| 2300 | Siemens     | 896  | Lillgrund A-07,Offshore    | C2a           | 92,4/69   | 071022 | 6875    | 7692    | 7153     | 3801     | 7596     | 98,8      | 408     | 0         |       |                 |    |     |     |    |     |    |
| 2300 | Siemens     | 897  | Lillgrund B-01,Offshore    | C2a           | 92,4/69   | 071104 | 6875    | 6335    | 6233     | 2997     | 6408     | 98,6      | 296     | 0         |       |                 |    |     |     |    |     |    |
| 2300 | Siemens     | 898  | Lillgrund B-02,Offshore    | C2a           | 92,4/69   | 071104 | 6875    | 5986    | 5823     | 2896     | 6114     | 98,4      | 270     | 0         |       |                 |    |     |     |    |     |    |
| 2300 | Siemens     | 899  | Lillgrund B-03,Offshore    | C2a           | 92,4/69   | 071104 | 6875    | 6049    | 5680     | 2969     | 6085     | 98,8      | 296     | 0         |       |                 |    |     |     |    |     |    |
| 2300 | Siemens     | 900  | Lillgrund B-04,Offshore    | C2a           | 92,4/69   | 071104 | 6875    | 6374    | 5799     | 3117     | 6307     | 98,8      | 328     | 0         |       |                 |    |     |     |    |     |    |
| 2300 | Siemens     | 901  | Lillgrund B-05,Offshore    | C2a           | 92,4/69   | 071108 | 6875    | 6243    | 5682     | 3075     | 6238     | 98,8      | 316     | 0         |       |                 |    |     |     |    |     |    |
| 2300 | Siemens     | 902  | Lillgrund B-06,Offshore    | C2a           | 92,4/69   | 071108 | 6875    | 6626    | 6121     | 3329     | 6683     | 98,8      | 347     | 0         |       |                 |    |     |     |    |     |    |
| 2300 | Siemens     | 903  | Lillgrund B-07,Offshore    | C2a           | 92,4/69   | 071023 | 6875    | 7086    | 6412     | 3501     | 6984     | 98,8      | 360     | 0         |       |                 |    |     |     |    |     |    |
| 2300 | Siemens     | 904  | Lillgrund B-08,Offshore    | C2a           | 92,4/69   | 071020 | 6875    | 8046    | 7390     | 4085     | 7939     | 98,8      | 452     | 0         |       |                 |    |     |     |    |     |    |
| 2300 | Siemens     | 905  | Lillgrund C-01,Offshore    | C2a           | 92,4/69   | 071117 | 6875    | 6306    | 6071     | 2900     | 6195     | 96,9      | 282     | 0         |       |                 |    |     |     |    |     |    |
| 2300 | Siemens     | 906  | Lillgrund C-02,Offshore    | C2a           | 92,4/69   | 071120 | 6875    | 5864    | 5564     | 2699     | 5706     | 97,8      | 282     | 0         |       |                 |    |     |     |    |     |    |
| 2300 | Siemens     | 907  | Lillgrund C-03,Offshore    | C2a           | 92,4/69   | 071120 | 6875    | 6031    | 5703     | 2887     | 6053     | 98,8      | 280     | 0         |       |                 |    |     |     |    |     |    |
| 2300 | Siemens     | 908  | Lillgrund C-04,Offshore    | C2a           | 92,4/69   | 071124 | 6875    | 6264    | 5742     | 3120     | 6305     | 98,8      | 322     | 0         |       |                 |    |     |     |    |     |    |
| 2300 | Siemens     | 909  | Lillgrund C-05,Offshore    | C2a           | 92,4/69   | 071124 | 6875    | 6435    | 6037     | 3224     | 6469     | 98,8      | 356     | 0         |       |                 |    |     |     |    |     |    |
| 2300 | Siemens     | 910  | Lillgrund C-06,Offshore    | C2a           | 92,4/69   | 071108 | 6875    | 6493    | 6000     | 3269     | 6526     | 98,8      | 351     | 0         |       |                 |    |     |     |    |     |    |
| 2300 | Siemens     | 911  | Lillgrund C-07,Offshore    | C2a           | 92,4/69   | 071108 | 6875    | 6864    | 6392     | 3516     | 6956     | 98,8      | 389     | 0         |       |                 |    |     |     |    |     |    |
| 2300 | Siemens     | 912  | Lillgrund C-08,Offshore    | C2a           | 92,4/69   | 071115 | 6875    | 7694    | 6983     | 3824     | 7549     | 98,5      | 380     | 0         |       |                 |    |     |     |    |     |    |
| 2300 | Siemens     | 913  | Lillgrund D-01,Offshore    | C2a           | 92,4/69   | 071201 | 6875    | 6256    | 6147     | 2974     | 6357     | 98,8      | 285     | 0         |       |                 |    |     |     |    |     |    |
| 2300 | Siemens     | 914  | Lillgrund D-02,Offshore    | C2a           | 92,4/69   | 071201 | 6875    | 5981    | 5765     | 2884     | 6061     | 98,8      | 281     | 0         |       |                 |    |     |     |    |     |    |
| 2300 | Siemens     | 915  | Lillgrund D-03,Offshore    | C2a           | 92,4/69   | 071201 | 6875    | 5842    | 5641     | 2822     | 5955     | 98,8      | 289     | 0         |       |                 |    |     |     |    |     |    |
| 2300 | Siemens     | 916  | Lillgrund D-04,Offshore    | C2a           | 92,4/69   | 071201 | 6875    | 6278    | 5869     | 3103     | 6326     | 98,8      | 333     | 0         |       |                 |    |     |     |    |     |    |
| 2300 | Siemens     | 917  | Lillgrund D-06,Offshore    | C2a           | 92,4/69   | 071120 | 6875    | 6715    | 6307     | 3316     | 6699     | 98,8      | 365     | 0         |       |                 |    |     |     |    |     |    |
| 2300 | Siemens     | 918  | Lillgrund D-07,Offshore    | C2a           | 92,4/69   | 071124 | 6875    | 7100    | 6480     | 3515     | 6977     | 98,8      | 388     | 0         |       |                 |    |     |     |    |     |    |
| 2300 | Siemens     | 919  | Lillgrund D-08,Offshore    | C2a           | 92,4/69   | 071112 | 6875    | 7756    | 7332     | 3950     | 7762     | 98,8      | 390     | 0         |       |                 |    |     |     |    |     |    |
| 2300 | Siemens     | 920  | Lillgrund E-01,Offshore    | C2a           | 92,4/69   | 071004 | 6875    | 6530    | 6510     | 3135     | 6568     | 98,7      | 339     | 0         |       |                 |    |     |     |    |     |    |
| 2300 | Siemens     | 921  | Lillgrund E-02,Offshore    | C2a           | 92,4/69   | 071004 | 6875    | 6022    | 5928     | 2949     | 6160     | 98,8      | 299     | 0         |       |                 |    |     |     |    |     |    |
| 2300 | Siemens     | 922  | Lillgrund E-03,Offshore    | C2a           | 92,4/69   | 071004 | 6875    | 6008    | 5824     | 2945     | 6121     | 98,8      | 302     | 0         |       |                 |    |     |     |    |     |    |
| 2300 | Siemens     | 923  | Lillgrund E-04,Offshore    | C2a           | 92,4/69   | 071201 | 6875    | 6291    | 5908     | 3084     | 6315     | 98,8      | 334     | 0         |       |                 |    |     |     |    |     |    |
| 2300 | Siemens     | 924  | Lillgrund E-05,Offshore    | C2a           | 92,4/69   | 071201 | 6875    | 6876    | 6357     | 3508     | 6907     | 98,6      | 369     | 0         |       |                 |    |     |     |    |     |    |
| 2300 | Siemens     | 925  | Lillgrund E-07,Offshore    | C2a           | 92,4/69   | 071128 | 6875    | 7629    | 7062     | 3854     | 7558     | 98,6      | 445     | 0         |       |                 |    |     |     |    |     |    |
| 2300 | Siemens     | 926  | Lillgrund F-02,Offshore    | C2a           | 92,4/69   | 071004 | 6875    | 6357    | 6326     | 3126     | 6521     | 98,8      | 321     | 0         |       |                 |    |     |     |    |     |    |
| 2300 | Siemens     | 927  | Lillgrund F-03,Offshore    | C2a           | 92,4/69   | 071006 | 6875    | 6009    | 5890     | 3044     | 6230     | 98,4      | 317     | 0         |       |                 |    |     |     |    |     |    |
| 2300 | Siemens     | 928  | Lillgrund F-04,Offshore    | C2a           | 92,4/69   | 071201 | 6875    | 6280    | 6024     | 3176     | 6390     | 96,6      | 350     | 0         |       |                 |    |     |     |    |     |    |
| 2300 | Siemens     | 929  | Lillgrund F-05,Offshore    | C2a           | 92,4/69   | 071201 | 6875    | 6899    | 6561     | 3508     | 6927     | 98,1      | 383     | 0         |       |                 |    |     |     |    |     |    |
| 2300 | Siemens     | 930  | Lillgrund F-06,Offshore    | C2a           | 92,4/69   | 071201 | 6875    | 7227    | 6908     | 3751     | 7321     | 98,7      | 422     | 0         |       |                 |    |     |     |    |     |    |
| 2300 | Siemens     | 931  | Lillgrund G-02,Offshore    | C2a           | 92,4/69   | 071008 | 6875    | 6592    | 6486     | 3227     | 6708     | 98,5      | 334     | 0         |       |                 |    |     |     |    |     |    |
| 2300 | Siemens     | 932  | Lillgrund G-03,Offshore    | C2a           | 92,4/69   | 071007 | 6875    | 6340    | 6253     | 3251     | 6619     | 98,8      | 335     | 0         |       |                 |    |     |     |    |     |    |
| 2300 | Siemens     | 933  | Lillgrund G-04,Offshore    | C2a           | 92,4/69   | 071201 | 6875    | 6692    | 6367     | 3326     | 6739     | 98,4      | 356     | 0         |       |                 |    |     |     |    |     |    |
| 2300 | Siemens     | 934  | Lillgrund G-05,Offshore    | C2a           | 92,4/69   | 071201 | 6875    | 7158    | 6867     | 3734     | 7347     | 98,4      | 426     | 0         |       |                 |    |     |     |    |     |    |
| 2300 | Siemens     | 935  | Lillgrund H-02,Offshore    | C2a           | 92,4/69   | 071005 | 6875    | 7222    | 7187     | 3720     | 7491     | 98,8      | 407     | 0         |       |                 |    |     |     |    |     |    |
| 2300 | Siemens     | 936  | Lillgrund H-03,Offshore    | C2a           | 92,4/69   | 071008 | 6875    | 7085    | 6932     | 3577     | 7235     | 98,8      | 382     | 0         |       |                 |    |     |     |    |     |    |
| 2300 | Siemens     | 937  | Lillgrund H-04,Offshore    | C2a           | 92,4/69   | 071006 | 6875    | 7210    | 7130     | 3782     | 7570     | 98,6      | 427     | 0         |       |                 |    |     |     |    |     |    |
| 2300 | Enercon     | 978  | Lövstaviken V1,Falkenberg  | B5c           | 70/70     | 070115 | 5600    | 5367    | 4678     | 2515     | 5217     | 98,8      |         |           |       |                 |    |     |     |    |     |    |
| 2300 | Enercon     | 979  | Lövstaviken V2,Falkenberg  | B5c           | 70/70     | 070115 | 5600    | 4954    | 4371     | 2332     | 4922     | 98,8      |         |           |       |                 |    |     |     |    |     |    |
| 2300 | Enercon     | 980  | Lövstaviken V4,Falkenberg  | B5c           | 70/70     | 070115 | 5600    | 5455    | 4760     | 2390     | 5204     | 98,9      |         |           |       |                 |    |     |     |    |     |    |
| 2300 | Enercon     | 981  | Lövstaviken V5,Falkenberg  | B5c           | 70/70     | 070115 | 5600    | 5163    | 4396     | 2390     | 5050     | 98,4      |         |           |       |                 |    |     |     |    |     |    |
| 2300 | Enercon     | 982  | Lövstaviken V6,Falkenberg  | B5c           | 70/70     | 070115 | 5600    | 5744    | 5043     | 2609     | 5514     | 97,7      |         |           |       |                 |    |     |     |    |     |    |
| 2300 | Enercon     | 1017 | Näsbyholm 1 Universal Pow  | D1g           | 70/64     | 081215 | 5200    | 3558    | 4586     | 2509     | 4947     | 95,1      | 252     | 95        | 29    |                 |    |     |     |    |     |    |
| 2300 | Enercon     | 1018 | Näsbyholm 2 Universal Pow  | D1g           | 70/64     | 081215 | 5200    | 3544    | 4186     | 2479     | 4766     | 94,5      | 249     | 93        | 49    |                 |    |     |     |    |     |    |
| 2300 | Enercon     | 1019 | Näsbyholm 3, Näsbyvind I,T | D1g           | 70/64     | 081215 | 5200    | 3699    | 4447     | 2434     | 4759     | 94,7      | 246     | 93        | 38    |                 |    |     |     |    |     |    |
| 2300 | Enercon     | 1020 | Näsbyholm 4, Näsbyvind II, | D1g           | 70/64     | 081215 | 5200    | 3572    | 4266     | 2485     | 4686     | 95,9      | 226     | 88        | 85    |                 |    |     |     |    |     |    |
| 2300 | Enercon     | 1026 | Hedeskoga 3,Hedeskoga      | D1h           | 70/65     | 071031 |         | 4828    | 4775     | 2415     | 5062     | 92,5      | 249     | 91        | 29    |                 |    |     |     |    |     |    |
| 2300 | Enercon     | 1027 | Hedeskoga 4,Hedeskoga      | D2b           | 70/65     | 071031 |         | 4718    | 5002     | 1652     | 4282     | 94,3      | 267     | 94        | 7     |                 |    |     |     |    |     |    |
| 2300 | Enercon     | 1087 | Universal Power Nygårdshu  | D2g           | 70/84     | 090715 | 4800    | 1961    | 4069     | 2356     | 4548     | 98,4      | 241     | 95        | 0     |                 |    |     |     |    |     |    |
| 2300 | Enercon     | 1189 | Annevind 3,Annelöv         | C2h           | 70/65     | 100301 | 4000    |         | 3217     | 2192     | 4193     | 94        | 228     | 90        | 16    |                 |    |     |     |    |     |    |
| 2500 | Nordex      | 1023 | Lundåkra 3,Landskrona      | C2g           | 90/80     | 081027 | 7050    | 6318    | 6293     | 2343     | 5973     | 96,3      | 383     | 75        | 0     |                 |    |     |     | 4  |     |    |
| 2500 | Nordex      | 1024 | Lundåkra 4,Landskrona      | C2g           | 90/80     | 081027 | 7050    | 5888    | 6145     | 2228     | 5628     | 95,9      | 348     | 73        | 0     |                 |    |     |     | 4  |     |    |
| 2500 | GE Wind En  | 1192 | Brunsmo 1,Brunsmo          | F3i           | 100/100   | 100401 | 6000    |         | 3102     | 1701     | 4226     | 97,3      | 302     | 0         | 2     |                 |    |     |     |    |     |    |
| 2500 | GE Wind En  | 1193 | Brunsmo 2,Brunsmo          | F3i           | 100/100   | 100401 | 6000    |         | 2981     | 1653     | 4044     | 97,9      | 271     | 0         | 3     |                 |    |     |     |    |     |    |
| 2500 | GE Wind En  | 1194 | Brunsmo 3,Brunsmo          | F4c           | 100/100   | 100401 | 6000    |         | 2959     | 1671     | 4058     | 98        | 311     | 0         | 4     |                 |    |     |     |    |     |    |
| 2500 | GE Wind En  | 1195 | Brunsmo 4,Brunsmo          | F4c           | 100/100   | 100401 | 6000    |         | 3123     | 1868     | 4335     | 95,8      | 333     | 0         | 7     |                 |    |     |     |    |     |    |
| 2500 | GE Wind En  | 1196 | Brunsmo 5,Brunsmo          | F4c           | 100/100   | 100401 | 6000    |         | 2971     | 1664     | 4117     | 97,8      | 278     | 0         | 9     |                 |    |     |     |    |     |    |
| 2500 | Nordex      | 1210 | Storrund Vindpark, STW01,S | D20f          | 90/80     | 100115 | 6625    |         | 5243     | 1173     | 3765     | 88,5      |         |           |       |                 |    |     |     |    |     |    |
| 2500 | Nordex      | 1211 | Storrund Vindpark, STW02,S | D20f          | 90/80     | 100115 | 6625    |         | 4680     | 1627     | 4171     | 96,9      |         |           |       |                 |    |     |     |    |     |    |
| 2500 | Nordex      | 1212 | Storrund Vindpark, STW03,S | D20f          | 90/80     | 100115 | 6625    |         | 4329     | 1585     | 3766     | 97,8      |         |           |       |                 |    |     |     |    |     |    |
| 2500 | Nordex      | 1213 | Storrund Vindpark, STW04,S | D20f          | 90/80     | 100115 | 6625    |         | 4593     | 1718     | 3950     | 98,6      |         |           |       |                 |    |     |     |    |     |    |
| 2500 | Nordex      | 1214 | Storrund Vindpark, STW05,S | D20f          | 90/80     | 100115 | 6625    |         | 4467     | 1557     | 3766     | 96,       |         |           |       |                 |    |     |     |    |     |    |



# Karta över verkens placering

